

# **Badische Landesbibliothek Karlsruhe**

**Digitale Sammlung der Badischen Landesbibliothek Karlsruhe**

## **Atlas compendiarius quinquaginta selectarum tabularum geographicarum Homanni**

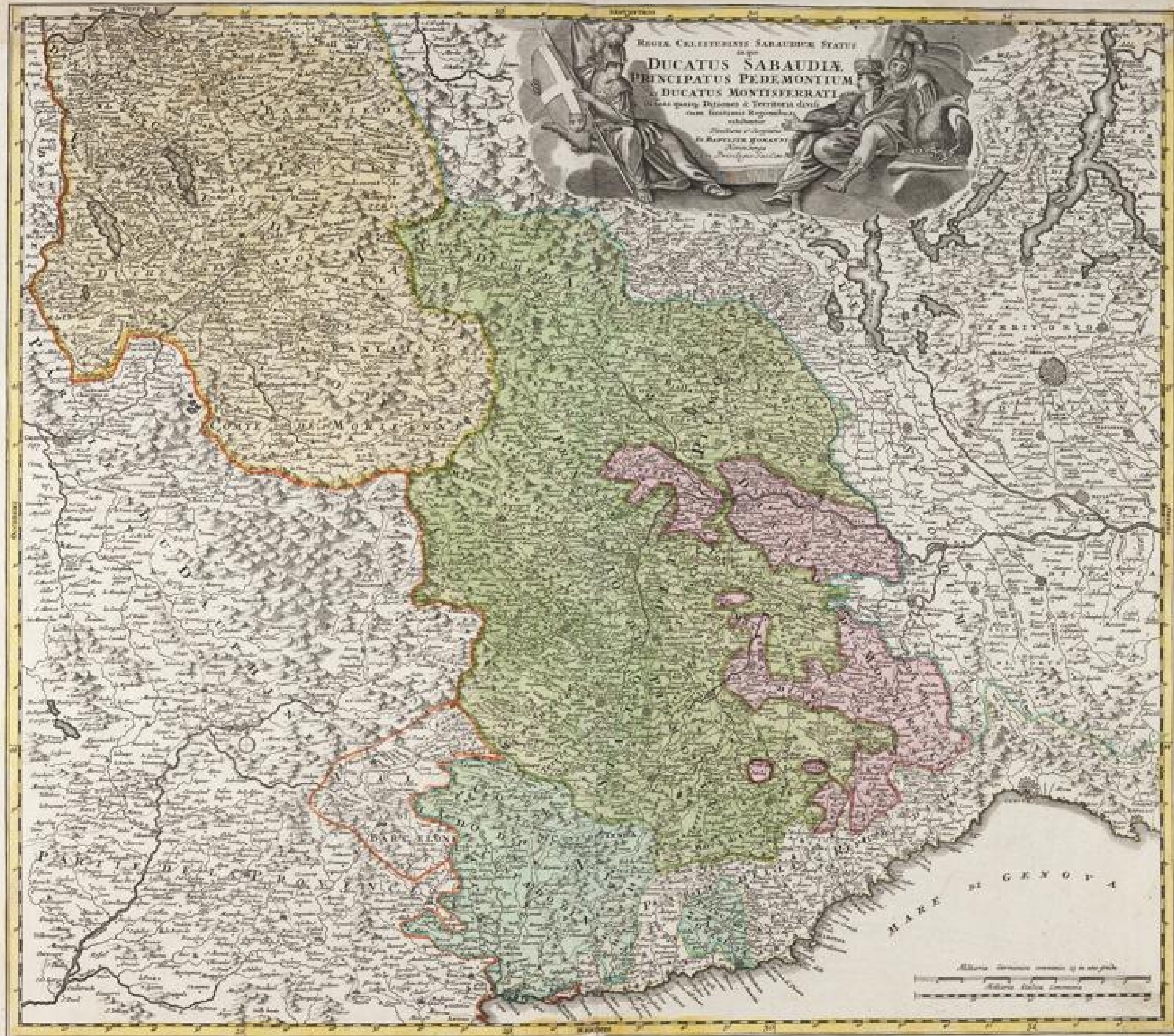
**Homann, Johann Baptist**

**Nürnberg, 1748**

**VD18 11521651-001**

Karte: Regiae celsitudinis sabaudicae status in quo [...]

[urn:nbn:de:bsz:31-118702](https://nbn-resolving.org/urn:nbn:de:bsz:31-118702)









REGIÆ CELSITUDINIS SABAUDICÆ STATUS  
 in quo  
**DUCATUS SABAUDIÆ**  
**PRINCIPATUS PEDEMONTIUM**  
 et **DUCATUS MONTISFERRATI**  
 in suas quasq; Ditiones & Territoria divisi  
 cum finitimis Regionibus  
 exhibentur

Directione & Summaribus  
**IO BAPTISTA HOMANNI**  
 Norimbergæ  
 cum Privilegio Sac. Cæs. M.



Miliaria Germanica communia 15 in uno gradu  
 Miliaria Italica Communia





