

# **Badische Landesbibliothek Karlsruhe**

**Digitale Sammlung der Badischen Landesbibliothek Karlsruhe**

## **Sonatas - Don Mus.Ms. 2840**

**Schwindel, Friedrich**

**[S.l.], 1750-1799 (18.2d)**

Violine I

[urn:nbn:de:bsz:31-126802](https://nbn-resolving.org/urn:nbn:de:bsz:31-126802)

[Schubert]

# Adagio

## Violino Primo

This image shows a page of handwritten musical notation for the first violin part of a piece titled "Adagio". The notation is written in a cursive, historical style on aged, yellowed paper. The score consists of six staves of music, each beginning with a treble clef and a key signature of one sharp (F#). The music is characterized by dense, intricate passages, including many sixteenth and thirty-second notes, as well as complex rhythmic patterns and slurs. The paper shows signs of age, with some staining and foxing, particularly in the lower right quadrant. The overall appearance is that of a historical manuscript or working draft.

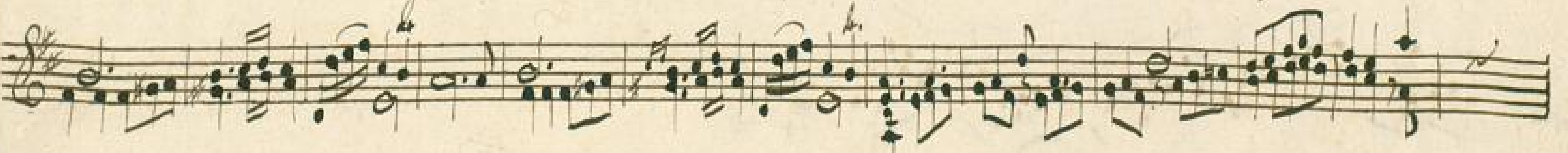


*Allegro*

A handwritten musical score for piano, consisting of seven staves of music. The tempo is marked "Allegro" in the top left. The music is written in G major (one sharp) and 2/4 time. The notation includes treble clefs, a key signature of one sharp (F#), and a time signature of 2/4. The score features a variety of rhythmic patterns, including eighth and sixteenth notes, and rests. The paper is aged and shows some staining.



*Allegro*





Gigue

Handwritten musical score for a Gigue, consisting of seven staves of music. The notation includes treble clefs, a key signature of one sharp (F#), and various rhythmic values such as eighth and sixteenth notes. The manuscript is written in a cursive hand on aged, slightly torn paper. The word "Gigue" is written in the top left corner. The score concludes with a double bar line and a fermata on the final note of the seventh staff.

Partial view of the adjacent page of the musical manuscript, showing the continuation of the Gigue score on several staves.



A page of handwritten musical notation on six staves. The notation is in a cursive, historical style, likely from the 18th or 19th century. Each staff begins with a treble clef and a key signature of one sharp (F#). The music consists of a single melodic line on each staff, featuring a variety of note values, including minims, crotchets, and quavers, as well as rests. The notation is densely packed, with many notes beamed together. There are several instances of slurs and phrasing marks. The paper is aged and shows some staining, particularly towards the bottom right corner.



A page of handwritten musical notation on six staves. The notation is dense and complex, featuring many beamed notes, slurs, and dynamic markings. The paper is aged and shows some staining. The music appears to be a single melodic line, possibly for a violin or flute, given the range and articulation. The staves are numbered 1 through 6 from top to bottom. The notation includes various rhythmic values, including sixteenth and thirty-second notes, and rests. There are also some larger notes with slurs, suggesting a more lyrical or expressive section. The overall style is characteristic of 18th or 19th-century manuscript notation.