

Badische Landesbibliothek Karlsruhe

Digitale Sammlung der Badischen Landesbibliothek Karlsruhe

Sonatas - Don Mus.Ms. 2840

Schwindel, Friedrich

[S.l.], 1750-1799 (18.2d)

Adagio D-Dur

[urn:nbn:de:bsz:31-126802](https://nbn-resolving.org/urn:nbn:de:bsz:31-126802)

[Schubert alt]

Adagio

Violino Primo

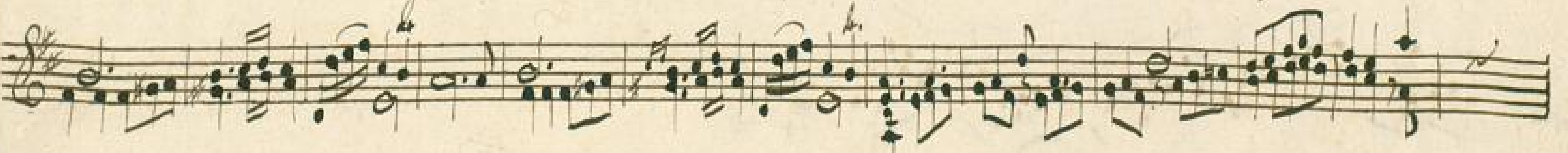
This image shows a page of handwritten musical notation for the first violin part of a piece titled "Adagio". The notation is written in a cursive hand on aged, yellowed paper. The score consists of six staves of music, each beginning with a treble clef and a key signature of one sharp (F#). The music is characterized by dense, intricate passages, including many sixteenth and thirty-second notes, as well as complex rhythmic patterns and slurs. The paper shows signs of age, with some staining and foxing, particularly in the lower right quadrant. The overall appearance is that of a historical manuscript.

Allegro

Handwritten musical score for piano, consisting of seven staves of music. The score is written in G major (one sharp) and 3/4 time. The tempo is marked *Allegro*. The notation includes treble clefs, a key signature of one sharp (F#), and various rhythmic values such as eighth and sixteenth notes, as well as rests. The paper is aged and shows some staining.



Allegro



Gigue

A handwritten musical score for a piece titled "Gigue". The score is written on seven staves of five-line music paper. The key signature is one sharp (F#), and the time signature is 3/4. The notation includes various rhythmic values such as eighth and sixteenth notes, as well as rests and bar lines. The music is written in a cursive, historical style. The word "Gigue" is written in the top left corner. The score concludes with a double bar line and a fermata on the final note of the seventh staff.

A partial view of the following page of the musical manuscript, showing the beginning of several staves of music in the same key and time signature as the previous page.

A page of handwritten musical notation on six staves. The notation is in a cursive, historical style, likely from the 18th or 19th century. Each staff begins with a treble clef and a key signature of one sharp (F#). The music is written in a single system across the six staves. The notation includes various note values, rests, and dynamic markings. The paper is aged and shows some staining and wear, particularly at the bottom right corner.

A page of handwritten musical notation on six staves. The notation is dense and complex, featuring many beamed notes, slurs, and dynamic markings. The paper is aged and shows some staining. The music appears to be a single melodic line, possibly for a violin or flute, given the treble clef and the range of notes. The handwriting is in dark ink, and the overall style is characteristic of 18th or 19th-century manuscript notation.