

Badische Landesbibliothek Karlsruhe

Digitale Sammlung der Badischen Landesbibliothek Karlsruhe

101 Wind music - Don Mus.Ms. 2889

[S.l.], 1850-1874 (19.3q)

2. Lumbye, Hans Christian - Rosa - winds

[urn:nbn:de:bsz:31-127643](https://nbn-resolving.org/urn:nbn:de:bsz:31-127643)

Handwritten musical score for a piece, consisting of eight staves of music. The notation includes various note values, rests, and dynamic markings such as 'mp' and 'p'. The music is written in a single system across the staves.

No 202. *Pasa Polca* von H. C. Lumbye

Handwritten musical score for 'Pasa Polca' by H. C. Lumbye, consisting of four staves of music. The first staff is marked 'Trump Solo'. The notation features complex rhythmic patterns and dynamic markings.

The image shows a page of handwritten musical notation on aged paper. The score is written in a cursive hand and consists of ten staves. The first staff begins with a treble clef, a key signature of one sharp (F#), and a 2/4 time signature. The music is characterized by dense, rhythmic patterns, likely for a piano or similar instrument. The notation includes many beamed notes, slurs, and dynamic markings. In the seventh staff, the word "Finale" is written in a decorative script. In the eighth staff, the title "Polca In Capot" is written in a similar decorative script. The final staff shows a few more notes and a double bar line, indicating the end of the piece. The paper shows signs of age, including some staining and discoloration.

A handwritten musical score consisting of six staves. The notation includes various rhythmic values such as eighth and sixteenth notes, often beamed together. There are several slurs and accents throughout the piece. The key signature appears to be one flat (B-flat). The piece concludes with a double bar line and a fermata on the final note of the sixth staff.

No 202. Rosa Polca von Lumbge

A handwritten musical score for a piece titled "No 202. Rosa Polca von Lumbge". It consists of five staves of music. The notation is more complex than the first piece, featuring many sixteenth and thirty-second notes, often in groups. There are several slurs and accents. The key signature is one flat. The piece ends with a double bar line and a fermata on the final note of the fifth staff.

Handwritten musical score for a piece titled "Polca da capo". The score consists of six staves. The first staff begins with a treble clef, a key signature of one flat (B-flat), and a 2/4 time signature. The music is written in a cursive hand. The piece concludes with a double bar line and the words "Polca da capo".

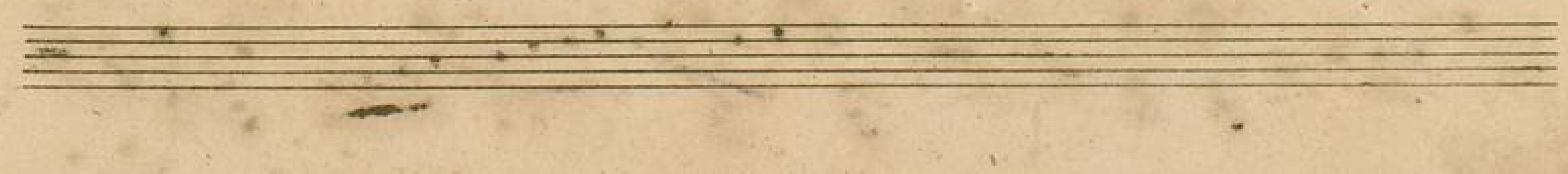
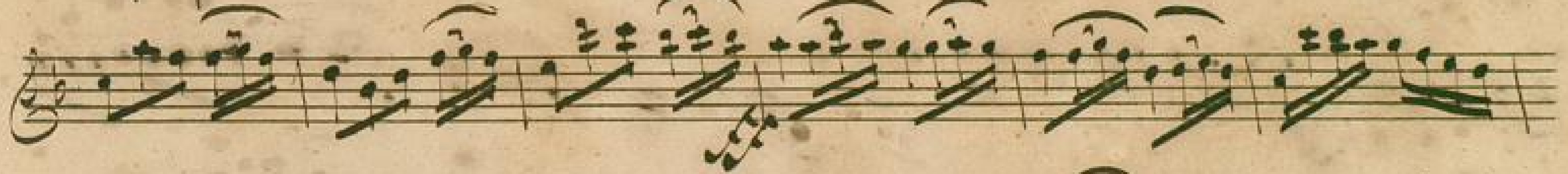
No. 203. Ouverture für Don Juan von W. A. Mozart

Handwritten musical score for "Ouverture für Don Juan von W. A. Mozart". The score consists of five staves. The first staff begins with a treble clef, a key signature of one flat (B-flat), and a 3/4 time signature. The tempo marking "Andante" is written at the beginning. The score concludes with the tempo marking "molto allegro" and the initials "V. S.".

A handwritten musical score consisting of ten staves. The notation is in a single system, likely for a single instrument. It features a variety of note values, including eighth and sixteenth notes, and rests. There are several dynamic markings, including 'p' (piano) and 'f' (forte), and some articulation marks like accents. The piece concludes with a double bar line and a fermata.

No 202. Rosa Galha von H. C. Lumbye

A handwritten musical score for the piece 'Rosa Galha' by H. C. Lumbye. It consists of two staves. The first staff begins with a key signature change to D major (two sharps) and a time signature of 2/4. The notation includes eighth and sixteenth notes, rests, and dynamic markings. The piece ends with a double bar line and a fermata.



The first system of the manuscript contains seven staves of handwritten musical notation. The notation is in a single system, likely for a multi-measure piece. It features various rhythmic values, including eighth and sixteenth notes, and rests. There are several slurs and phrasing marks throughout the system. The paper shows signs of age, with some staining and fading.

No. 202. *Noni Polca per Lumbye*

in B. 2.

The second system of the manuscript consists of four staves of handwritten musical notation. It begins with the tempo marking *in B.* and the number 2, indicating a second ending or a specific tempo. The notation includes various rhythmic patterns and rests, typical of a polka. The paper is aged and shows some staining.

Andante 



 *Felca*
Capo

Finale 





No. 203. Ouverture für Violin Solo Quant. per W. A. Mozart
in A.

Andante 









V. d.

Handwritten musical score for the first system, consisting of eight staves of music. The notation includes various notes, rests, and dynamic markings such as *me* and *cus*.

Handwritten musical score for the second system, consisting of a single staff of music with notes and rests.

No. 202. *Alma Petruque Lambige*

Handwritten musical score for the third system, consisting of three staves of music with notes and rests.



Viol. No. 200.



Cresc. = =

mp

pp

No. 202. Rosa Polca von Lumbago

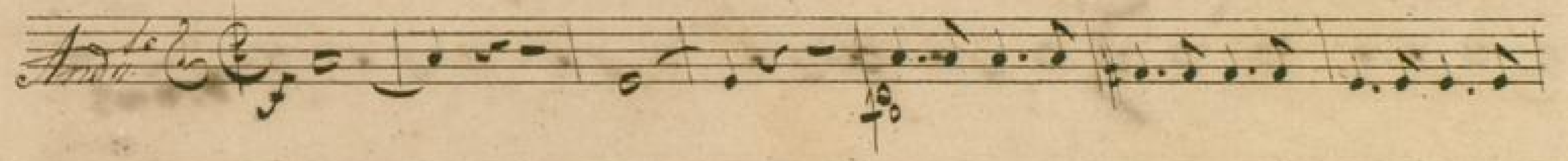
2.

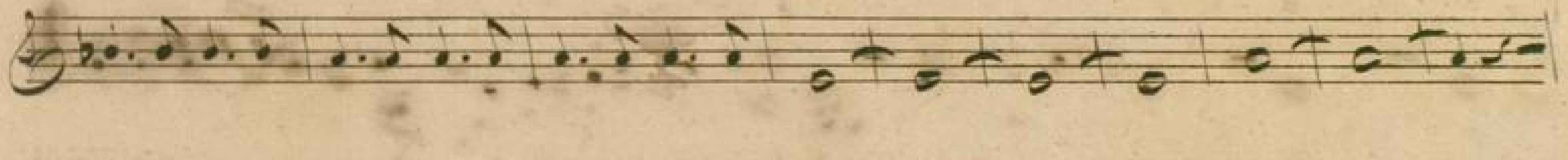
Fine


Allegro


Andante 


No. 203. *Quartett für den Sonntag von W. A. Mozart*


Andante 

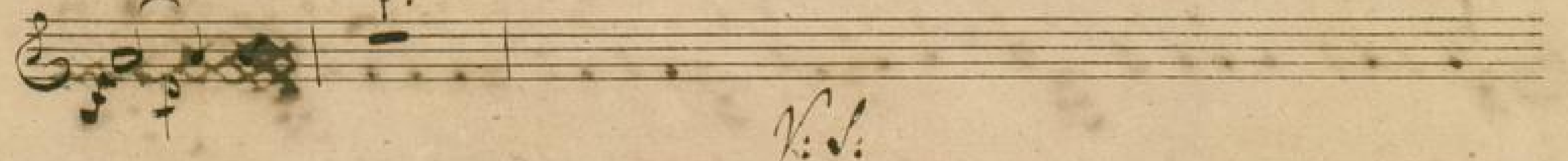
molto allegro 6. 


2. 







Fin. 



No 202. Pusa Lethapoa Samtye

Musical notation on a single staff.

Musical notation on a single staff.

No. 209. Quartett für den Saal von W. A. Mozart

Andante Musical notation on a single staff.

Musical notation on a single staff.

Musical notation on a single staff.

molto Allegro Musical notation on a single staff.

Musical notation on a single staff.

Musical notation on a single staff.

Musical notation on a single staff.

V. C.

Empty musical staff.

Empty musical staff.

No. 202. Prasa Polka nach Luntze

in Es.

Solo

A handwritten musical score for a piece titled 'Prasa Polka nach Luntze'. The score is written on ten systems of two staves each. The first system begins with the key signature 'in Es.' and the tempo marking 'Solo'. The music is in 2/4 time and features a complex, rhythmic melody with many beamed notes and slurs. The piece concludes with a double bar line. The second system starts with the tempo marking 'Trio' and continues the melodic line. The final system of the page is marked 'Finale' and includes the instruction 'Polca Da Capo' at the end of the first staff, indicating a repeat of the polka section.

Handwritten musical notation on two staves. The first staff begins with a treble clef and contains a series of eighth and sixteenth notes. The second staff continues the melody with similar note values and includes a fermata over a final note.

No 203. Ouverture zu Don Juan von W. A. Mozart
in D.

Andante *A.*

The first staff of the 'Andante' section begins with a treble clef and a 3/4 time signature. It features a slow, melodic line with some rests and a fermata.

The second staff continues the 'Andante' section with a melodic line and some rests.

The third staff continues the 'Andante' section with a melodic line and some rests.

molto Allegro *6.*

The 'molto Allegro' section begins with a treble clef and a 3/4 time signature. It features a fast, rhythmic melody with some rests.

The second staff continues the 'molto Allegro' section with a fast, rhythmic melody.

The third staff continues the 'molto Allegro' section with a fast, rhythmic melody.

The fourth staff continues the 'molto Allegro' section with a fast, rhythmic melody.

The fifth staff continues the 'molto Allegro' section and includes a second ending marked '2.'.

The sixth staff continues the 'molto Allegro' section with a fast, rhythmic melody.

Handwritten musical score for the first piece, consisting of four staves. The first staff features a complex, multi-measure rest with the number '1110' written below it. The music is in a minor key and includes various rhythmic values and ornaments.

No 202. Polca Polca ypa Lumbige

Handwritten musical score for the second piece, "No 202. Polca Polca ypa Lumbige", consisting of eight staves. The first staff has a "2." above it. The music is in 2/4 time and includes various rhythmic patterns and ornaments. The piece concludes with the word "Polca" written above the final staff.

Andante

No. 203. Quartett für Violoncellen von W. A. Mozart

Andante

molto allegro 6.

8.

V. S.