

Badische Landesbibliothek Karlsruhe

Digitale Sammlung der Badischen Landesbibliothek Karlsruhe

101 Wind music - Don Mus.Ms. 2889

[S.l.], 1850-1874 (19.3q)

33. Bendl, Karel - Berg-Lieder - winds

[urn:nbn:de:bsz:31-127643](https://nbn-resolving.org/urn:nbn:de:bsz:31-127643)

No. 233. Berg-Viertel, Original Ober-Ländler von Carl Lind. Op. 43.

Maestoso

Langsam

No. 1. Ländler

Schnell

Langsam

No. 2.

Schnell

cres

Langsam. Solo

ritar. atempo

mp. Mit Leidenschaft.

Schnell

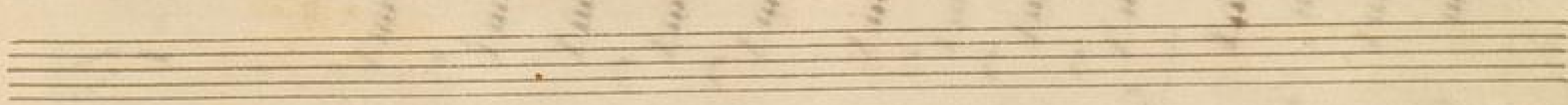
Langsam mit Wehmuth.

6.

7.

etwas schneller ohne zu überstreichen

Schnell und feurig



Erinnert ich den Gulten, tief bewegt 37.
den nicht den jungen Mann. ||

ritimato

trun *Lullia jellia wis ruff beuulpu' wa' wa'*
Mid d'ru' ist Gott und sein' Jesu' wa' wa'!

38. *In Allo*

trun

trun

trun

No. 229. 230. 231. 232. *Tacet.*

No. 233 *Ländlerquart. C. Bonell.*

Maestoso.

trun

No. 1. *Langsam.* 15.

Handwritten musical notation for the first piece, consisting of four staves. The notation includes treble clefs, a key signature of one flat, and various rhythmic values such as eighth and sixteenth notes. There are dynamic markings like 'p' and 'f' and some performance instructions like '2do'.

No. 2. Langsam.

Handwritten musical notation for the second piece, consisting of four staves. It begins with a 3/4 time signature. The notation includes treble clefs, a key signature of one flat, and various rhythmic values. There are dynamic markings like 'p' and 'f', and performance instructions like 'Schnell' and '4.'

No. 3. Langsam.

Handwritten musical notation for the third piece, consisting of four staves. The notation includes treble clefs, a key signature of one flat, and various rhythmic values. There are dynamic markings like 'p' and 'f'.

No. 21. Langsam.

Alma Scheller

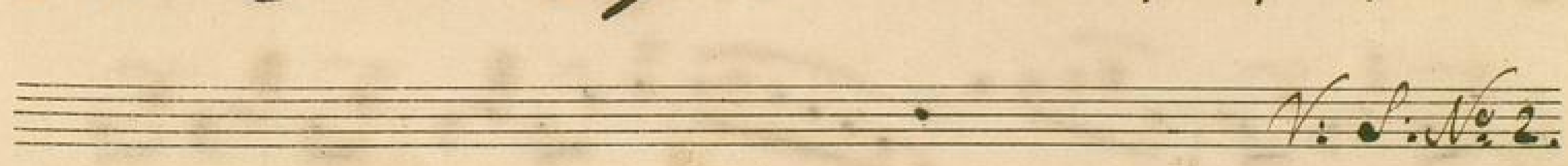
Schnell

No. 234. Duetto aus Wilhelm Tell von Rossini

Alb. moderato



No 233. Berg-Lieder. Landwehrm. Carl Brendl Op. 113.
in B.



V. S. No 2.

No. 2. Langsam.

No. 3 Langsam.



V. L. No. 234.





No. 233. Landtanz von Carl Brendl

in B.



Schnell

No. 3. Langsam

rit. a tempo

Schnell

No. 4 Langsam

V. S.

Elias Schneller

Handwritten musical score for Elias Schneller, consisting of four staves of music. The first staff begins with a treble clef and a key signature of one sharp (F#). The tempo marking 'Schnell' is written above the second staff. The music features a mix of eighth and sixteenth notes, with some slurs and dynamic markings.

No. 234. M. Kullthaus Wilhelm Sell und Professor

Handwritten musical score for No. 234, consisting of ten staves of music. The tempo marking 'Allo moderato' is written above the first staff. The music is written in a single system with ten staves, featuring a variety of rhythmic patterns and dynamic markings. The notation includes many slurs and accents, particularly in the lower staves.

Handwritten musical notation on two staves. The first staff contains several measures of music with notes and rests. The second staff continues the piece with similar notation.

No 233. Ländler Opus C. Benell.

Handwritten musical notation starting with the tempo marking "Marsato". The notation includes a treble clef, a key signature of two flats, and a 3/4 time signature. The music consists of several measures of rhythmic patterns.

Handwritten musical notation with the tempo marking "No 1. Langsam" and "Solo". The notation features a treble clef, a key signature of two flats, and a 3/4 time signature. It includes several measures of music with notes and rests.

Handwritten musical notation with a dynamic marking "mf". The notation includes a treble clef, a key signature of two flats, and a 3/4 time signature. It consists of several measures of music.

Handwritten musical notation with the tempo marking "Schnell". The notation includes a treble clef, a key signature of two flats, and a 3/4 time signature. It features several measures of music.

Handwritten musical notation with a dynamic marking "f". The notation includes a treble clef, a key signature of two flats, and a 3/4 time signature. It consists of several measures of music.

Handwritten musical notation with a dynamic marking "i". The notation includes a treble clef, a key signature of two flats, and a 3/4 time signature. It features several measures of music.

V. S.

No 2 Langsam.

No 3 Langsam.

No 4 Langsam.

Chaos Schneller

Schnell

ppp *2da*

No. 234. Duetto aus Wilhelm Tell von Rossini

Allo moderato

V. S.

Andante

Musical notation on a single staff.

Musical notation on a single staff.

Musical notation on a single staff.

Musical notation on a single staff.

Musical notation on a single staff.

No. 299. Ländler von Carl Brendl

Molto Musical notation on a single staff.

Musical notation on a single staff.

Musical notation on a single staff.

N. S.

Empty musical staff.

No. 1. Langsam.

mf

Schnell

No. 2. Langsam.

p

Schnell

No. 3. Langsam.

p

rit.

atempo

Schnell

Nr. 4 Langsam.

Etwas Schneller

Schnell

No. 233. Landtes und Carl Bendel

Moderato.

Allegro.

Schnell

V. L.

.....

No 2. Langsam.

Handwritten musical score for No. 2, Langsam. It consists of five staves of music. The first staff is the melody, and the second is the accompaniment. The third staff is a continuation of the accompaniment with the tempo marking 'Schnell' above it. The fourth and fifth staves continue the accompaniment.

No 3. Langsam.

Handwritten musical score for No. 3, Langsam. It consists of five staves of music. The first staff is the melody, and the second is the accompaniment. The third staff is a continuation of the accompaniment with the tempo marking 'Schnell' above it. The fourth and fifth staves continue the accompaniment.

No 4. Langsam.

Handwritten musical score for No. 4, Langsam. It consists of two staves of music. The first staff is the melody, and the second is the accompaniment with the tempo marking 'Etwas schneller' above it.

Handwritten musical notation on four staves. The first three staves contain a complex melodic line with various rhythmic values and accidentals. The fourth staff contains a few notes and a fermata.

No. 2. H. Suetta aus Wilhelm Tell von Rossini

Allo moderato

Handwritten musical notation for "Suetta aus Wilhelm Tell von Rossini" on six staves. The notation includes dynamic markings like "p" and "f", and a second ending bracket labeled "2.".

Vic. S.

No 233. Ländler von C. Bittel

in C.

Maestoso. Musical notation on a single staff with a treble clef and a 3/4 time signature. It begins with a first ending bracket and a '2.' marking.

Musical notation on a single staff with a treble clef, continuing the melody from the previous staff.

Musical notation on a single staff with a treble clef. It includes a section marked 'No 1. Langsam' with a '2.' marking.

Musical notation on a single staff with a treble clef, featuring dynamic markings 'rmo' and '2do'.

Musical notation on a single staff with a treble clef, continuing the piece.

Musical notation on a single staff with a treble clef. It includes a section marked 'Schnell' with a '2.' marking.

Musical notation on a single staff with a treble clef, continuing the piece.

Musical notation on a single staff with a treble clef. It includes a section marked 'No 2 Langsam' with a '2.' marking.

Musical notation on a single staff with a treble clef, continuing the piece.

Musical notation on a single staff with a treble clef, continuing the piece.

Musical notation on a single staff with a treble clef, continuing the piece.

No 3 Langsam.

Schnell

Andante

Andante

No 293. Für die Violine C. Beuol

Allegretto

V. C.

Ländler, Langsam.



