

# **Badische Landesbibliothek Karlsruhe**

**Digitale Sammlung der Badischen Landesbibliothek Karlsruhe**

## **101 Wind music - Don Mus.Ms. 2889**

**[S.l.], 1850-1874 (19.3q)**

41. Kalliwoda, Johann Wenzel - Der Landwehrmann - Arr. winds. StrK deest

[urn:nbn:de:bsz:31-127643](https://nbn-resolving.org/urn:nbn:de:bsz:31-127643)

No. 211. "Der Landwehmann" von S. W. Hallinoda

*Allagio.*

V. S.



No. 242. Rondeletto für Horn von J. W. Wallwooda



No. 211. Der Landwehrmann von F. W. Kalliwoda

*Allegro*

V. S.



Handwritten musical score for the first system, consisting of four staves of music in treble clef with a key signature of one flat and a common time signature.

No. 212. Rondello für Horn nach L. W. Halliwood

Handwritten musical score for the second system, consisting of eight staves of music. It includes tempo markings like "Allegretto" and "Allegro", dynamic markings like "pp" and "tutti", and performance instructions like "Solo" and "tutti".



Handwritten musical score for the first piece, consisting of six staves of music in treble clef with a key signature of one sharp (F#). The notation includes various rhythmic values, slurs, and dynamic markings.

No 211, Der Landwehrmann von J. W. Halliander  
in B.

*Allegro.*

Handwritten musical score for the second piece, consisting of six staves of music in treble clef with a key signature of one sharp (F#). The tempo is marked *Allegro.* The notation includes various rhythmic values, slurs, and dynamic markings.

*And. Trio.*



*Trio*

*Bisul Dal Segno  
al Fine!*

*No 2 // 2. Rondoletto für Altin von F. W. Walther*

*in B.*

*Alligretto*

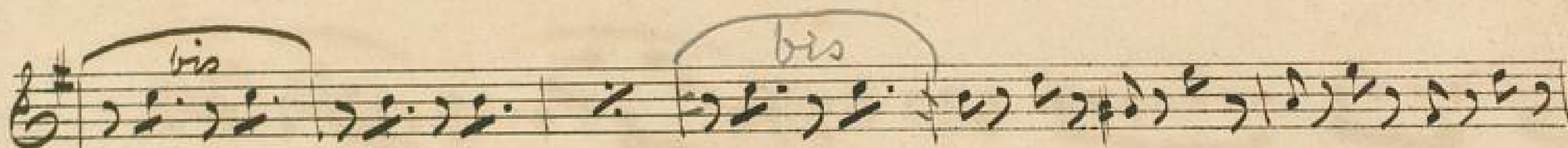
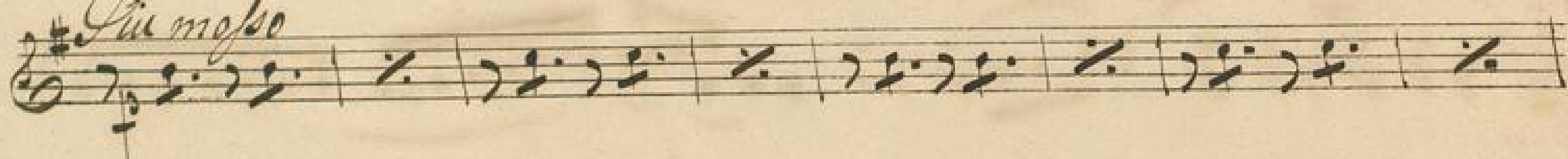
*2. mf*

*1/10*

*1. alle 2.*



*Im meise*



*No 211 Der Landwehmann von S. W. Wallwood*

*in B.*





No. 212. Ronco für Horn von L. W. Halkionda  
in B.

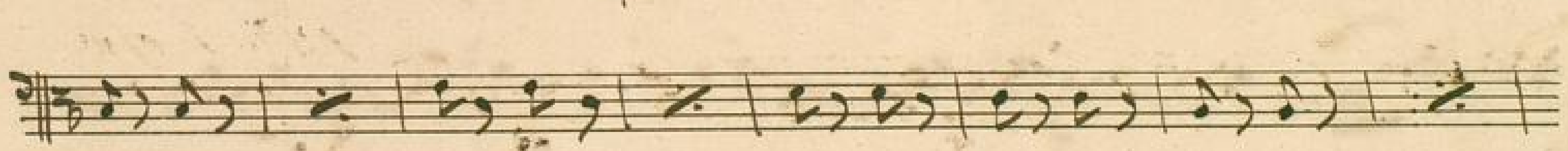
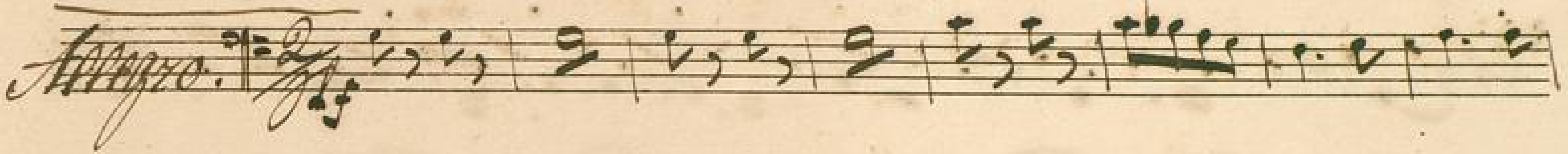
Allegretto  $\text{C}^{\flat} \frac{6}{8}$  2. M. *pp* *ppp*

V. S.





No. 211. Der Landwehman von F. W. Halliwood  
Tosanne.



Quint. Allegro  
al Fine



Musical notation on a single staff.

Musical notation on a single staff.

Musical notation on a single staff.

No. 2 III. "Der Landwechermann" von F. W. Kulliwoda

*Allegro.* Musical notation on a single staff.

Musical notation on a single staff.

Musical notation on a single staff.

Musical notation on a single staff.

Musical notation on a single staff. Includes the word *Trio* and a first ending bracket.

Musical notation on a single staff. Includes a first ending bracket with numbers 4, 5, 6, 7, 8, 9, 10.

Musical notation on a single staff.

Musical notation on a single staff. Includes the words *Final*, *Adagio*, and *Calmo*.



*piu mosso*

No 241. "Der Landwehrmann" von S. W. Hallwachs

*Allegro.*



Handwritten musical score for the first part of the piece, consisting of five staves of music in treble clef with various rhythmic values and rests.

No 212. Rondeletto für Horn nach L. W. Hallsiedel

*Allegretto*  $\frac{6}{8}$  2. *mf*  $\frac{10}{10}$

Handwritten musical score for the second part of the piece, consisting of three staves of music in treble clef with dynamic markings and tempo indications.

V. S.

Three empty musical staves at the bottom of the page.



No. 211. "Der Landwehrmann" von C. W. Hallwood

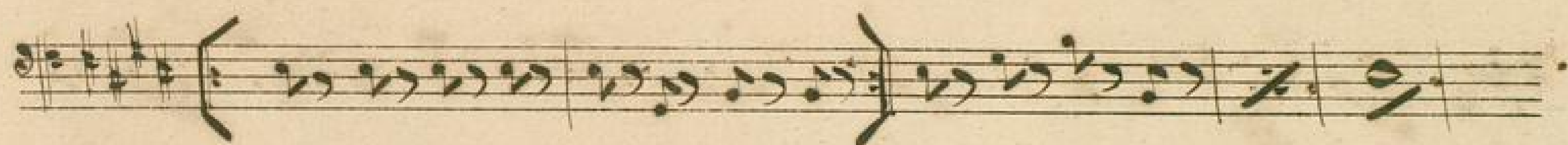
in F.

*Allegro.*

*Trio*

*Quasi Dal Segno  
al Fine*





No. 247. Der Landwehmann von S. W. Walther  
*Sagotto.*



V. S. Trio



*Andante*

*Bisul Dal Segno  
al Fine*

*No. 212. Prionda für Horn, von S. W. Kalkbrenner*

*Alligretto*

*Allo*