

Badische Landesbibliothek Karlsruhe

Digitale Sammlung der Badischen Landesbibliothek Karlsruhe

101 Wind music - Don Mus.Ms. 2889

[S.l.], 1850-1874 (19.3q)

43. Verdi, Giuseppe - Rigoletto - Excerpts. Arr. winds

[urn:nbn:de:bsz:31-127643](https://nbn-resolving.org/urn:nbn:de:bsz:31-127643)

Handwritten musical notation on two staves. The top staff contains a sequence of notes with a '4.' marking above it. The bottom staff contains a sequence of notes with a '5.' marking above it.

No. 243. *Arie aus „Pigoletto“ von G. Verdi*

Handwritten musical score for "Arie aus „Pigoletto“ von G. Verdi". It consists of ten staves of music. The first staff is marked "Allegro". The second staff has "mf" markings. The third staff has "Allegro moderato" and "dolcissimo" markings. The fourth staff has "dolce" markings.

V. S.

Handwritten musical score for the first system, consisting of seven staves of music. The notation includes various rhythmic values, slurs, and dynamic markings. The key signature is G major (one sharp) and the time signature is 2/4. The music features complex textures with many beamed notes and slurs.

No 2 Alt. Concertante für Flöte, Oboe, Clarinette und Basson.

Handwritten musical score for the second system, starting with the tempo marking "Allegro". It consists of four staves of music. The notation includes slurs, dynamic markings, and various rhythmic patterns. The key signature remains G major and the time signature is 2/4.

Handwritten musical notation on three staves. The first staff has a '4.' above it. The second staff has 'ous.' below it. The third staff has a double bar line and a fermata.

No. 213. Aria aus Trigoletto von G. Verdi

Handwritten musical notation for 'Aria aus Trigoletto von G. Verdi'. It consists of seven staves. The first staff is marked 'Allegro'. The second and third staves are marked 'Allegro moderato' and 'dolcissimo'. The fourth staff has 'ritar.' below it. The fifth staff has a 'II' above it. The sixth staff has an '8.' above it. The seventh staff has a '2.' above it.

V.S.

A handwritten musical score on ten staves. The notation is in a single system, likely for a single melodic line. The key signature consists of three sharps (F#, C#, G#), and the time signature is 3/4. The music features a variety of note values, including quarter, eighth, and sixteenth notes, as well as rests. There are several slurs and accents throughout the piece. The final measure of the tenth staff ends with a double bar line and a fermata over a whole note. The paper shows signs of age, with some staining and wear at the edges.

Two empty musical staves, each consisting of five horizontal lines, positioned at the bottom of the page. They are completely blank, with no notation or markings.

cris *ff*

No. 213. *Arie aus „Rigoletto“ von G. Verdi*

int.

Alllegro

morendo *Alllegro moderato*

ola

dolce

Viol.

Handwritten musical score on ten staves. The notation includes treble clefs, a key signature of one sharp (F#), and a 3/4 time signature. The music features complex rhythmic patterns, including sixteenth and thirty-second notes, and various rests. Performance markings such as *trun* and *p dolce* are present. The score concludes with a double bar line and a repeat sign.

Two empty musical staves at the bottom of the page, consisting of five-line systems.

No. 243. *Arie aus Trigoletto* von J. Verdi
inst.

Allegro.

Allegro moderato.

Handwritten musical score for the first system, consisting of four staves. The first staff has a treble clef and a key signature of one sharp (F#). The second staff has a bass clef. The third and fourth staves have treble clefs. The music includes various note values, rests, and dynamic markings.

No. 244. Concertante für Flöte oder Clarinette und Fagott.
in A.

Allegro *2.*

B. C. *A. S.*

No. 243. Aria aus Trigoletto von G. Verdi

Allegro

morendo

Allegro moderato

Handwritten musical score for the first piece, consisting of four staves. The notation includes various notes, rests, and dynamic markings such as *f* and *ff*. The piece concludes with a *fini* marking.

No 2111. Concertante für Flöte, Oboe, Clarinette und Fagott

Handwritten musical score for the second piece, starting with the tempo marking *Allegro*. It consists of seven staves of music with complex rhythmic patterns and dynamic markings.

Bourgeoise
Moderato *V. Solo*

No. 213. Arie aus „Pugelletto“ von Verdi

Allegro.

Allegro moderato.

diminu.

No 2 III. Concertante für Flöte Oboe Clarinette u Fagotto

Allegro

2.

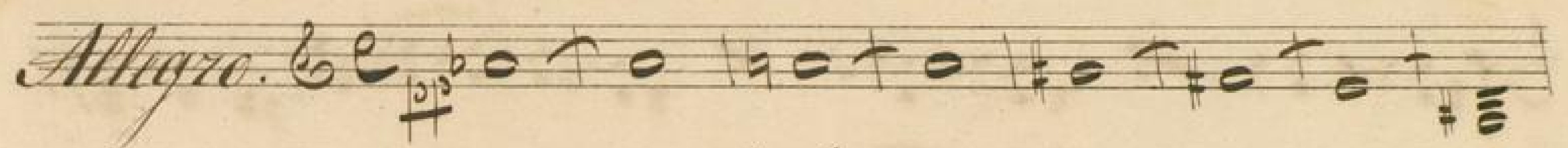
Burcarole

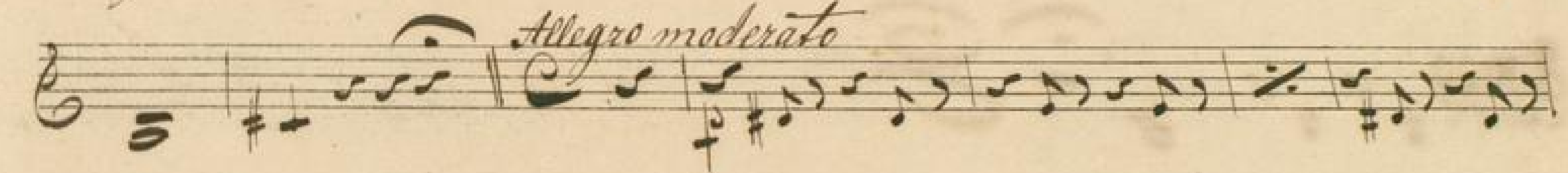
moderato


4.

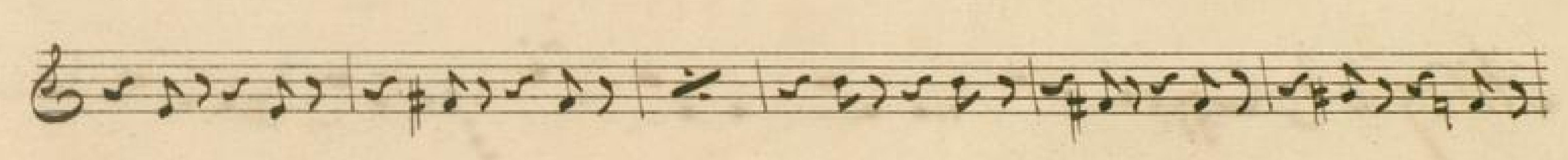
V. L.

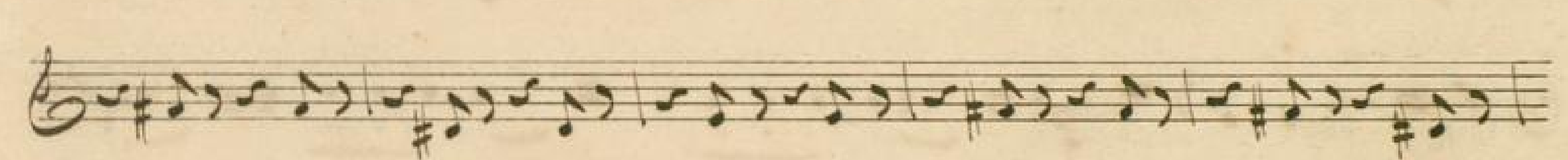
No. 213. Arië aus "Rigoletto" von G. Verdi

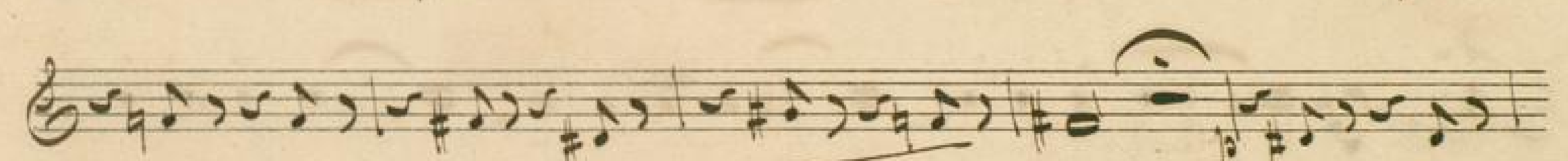
Alligro. 


Allegro moderato 

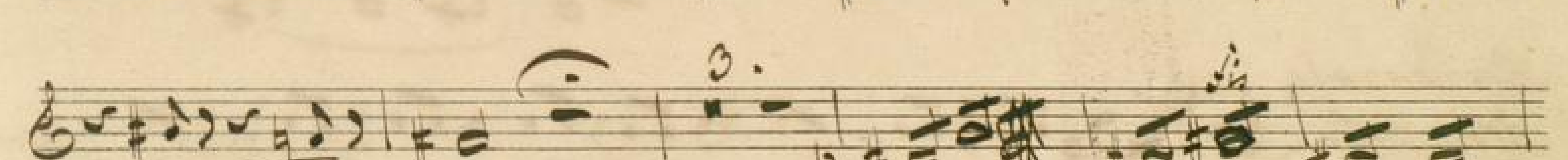








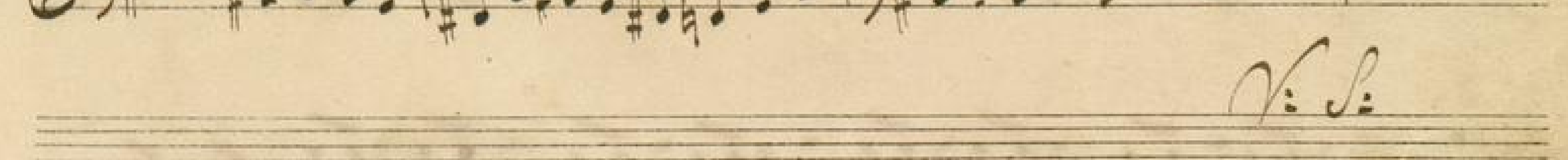


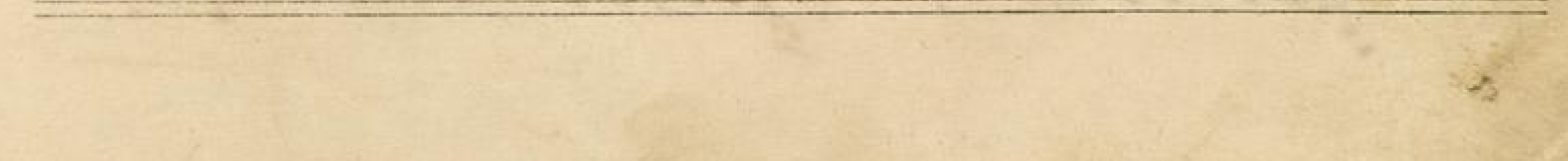















V. S.

Handwritten musical notation for the first system, featuring two staves with treble clefs and a third staff with a bass clef. The notation includes various note values, rests, and dynamic markings such as 'f' and 'dimi:'.

No. 244. Concertante für Flöte Oboe Clarinette & Fagott

Allegro
Handwritten musical notation for the second system, titled 'Allegro'. It consists of four staves with treble clefs. The notation includes dynamic markings like 'f' and '2.'.

Barcarole Moderato.
Handwritten musical notation for the third system, titled 'Barcarole Moderato'. It consists of four staves with treble clefs. The notation includes dynamic markings like 'f' and '4.'.

Handwritten musical score for a piece, consisting of six staves of music in treble clef with various notes and rests.

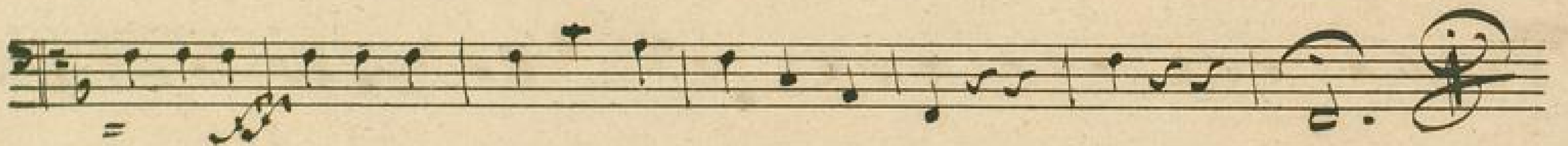
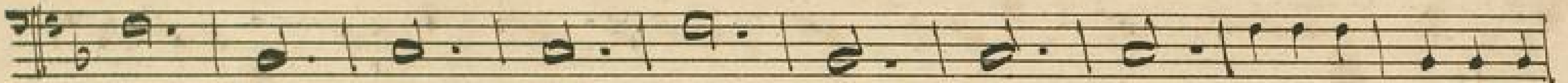
No. 243. *Aria* *and* *Trigellette* *per* *G. Verdi*

in C.

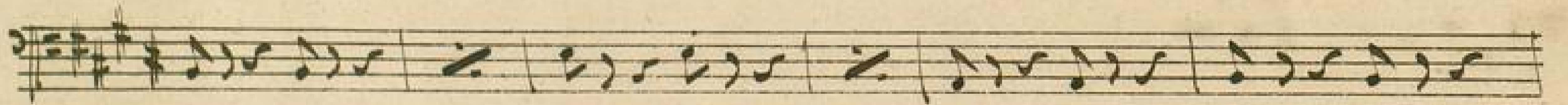
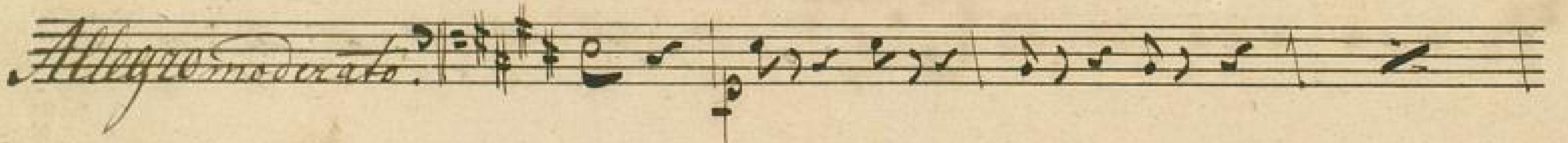
Allegro. 2. *A.*

Alligro moderato

Handwritten musical score on ten staves. The notation includes treble clefs, various note values (quarter, eighth, sixteenth notes), rests, and dynamic markings such as "dimmi". A small boxed-in section of music is visible at the top of the first staff. The bottom three staves are empty.



No. 243. Aria aus Rigolotto von G. Verdi.



Handwritten musical score on ten staves. The notation includes various note values, rests, and dynamic markings such as 'p' and 'dim.'. The music is written in a system with a key signature of one sharp (F#) and a common time signature (C). The notation is dense and characteristic of 18th or 19th-century manuscript notation.

Three empty musical staves at the bottom of the page, consisting of three sets of five-line staves.