

Badische Landesbibliothek Karlsruhe

Digitale Sammlung der Badischen Landesbibliothek Karlsruhe

101 Wind music - Don Mus.Ms. 2889

[S.l.], 1850-1874 (19.3q)

61. Beethoven, Ludwig van - Septets - Excerpts. Arr. winds. LvBWV
op.20/3

[urn:nbn:de:bsz:31-127643](https://nbn-resolving.org/urn:nbn:de:bsz:31-127643)

No. 261 Menuetto aus dem Septetto von L. van Beethoven

Handwritten musical notation for the first system of No. 261. It consists of three staves. The first staff begins with a treble clef, a key signature of two flats (B-flat and E-flat), and a 3/4 time signature. The tempo is marked *Andante*. The first measure is marked with a '2.' above it. The second staff continues the melody with a *mf* dynamic marking. The third staff features a complex chordal texture with a *8vo* marking above it. The system concludes with a *fine* marking.

Handwritten musical notation for the second system of No. 261. It consists of two staves. The first staff begins with a treble clef, a key signature of two flats, and a 3/4 time signature. The tempo is marked *Trio*. The first measure is marked with a '4' above it. The second staff continues the melody with a *mf* dynamic marking.

Handwritten musical notation for the third system of No. 261. It consists of two staves. The first staff begins with a treble clef, a key signature of two flats, and a 3/4 time signature. The tempo is marked *Moderato*. The first measure is marked with an '8.' above it. The second staff continues the melody with a *mf* dynamic marking. The system concludes with a *Salapo* marking.

No. 262. aus dem Septetto von L. van Beethoven.

Handwritten musical notation for the first system of No. 262. It consists of one staff. The tempo is marked *Adagio*. The first measure is marked with a '2.' above it.

V. S.

Handwritten musical score for a piece, consisting of ten staves of music in a single system. The notation includes treble clefs, a key signature of two flats (B-flat and E-flat), and a 3/4 time signature. The music features various note values, rests, and dynamic markings such as 'p' and 'pp'. The piece concludes with a double bar line and a fermata over the final note.

No. 261. Menuetto von L. van Beethoven

Handwritten musical score for 'Menuetto von L. van Beethoven', consisting of two staves of music. The notation includes treble clefs, a key signature of two flats, and a 3/4 time signature. The music features various note values, rests, and dynamic markings such as 'p' and 'pp'. The piece concludes with a double bar line and a fermata over the final note.



No. 262. I^{ma} Satz aus dem Septetto von L. van Beethoven

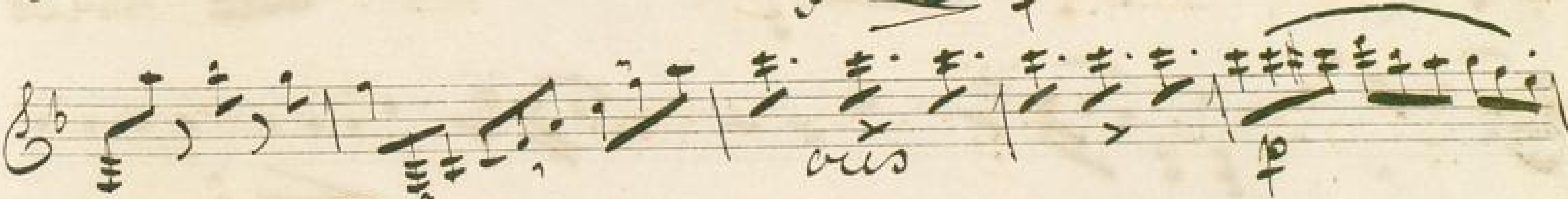
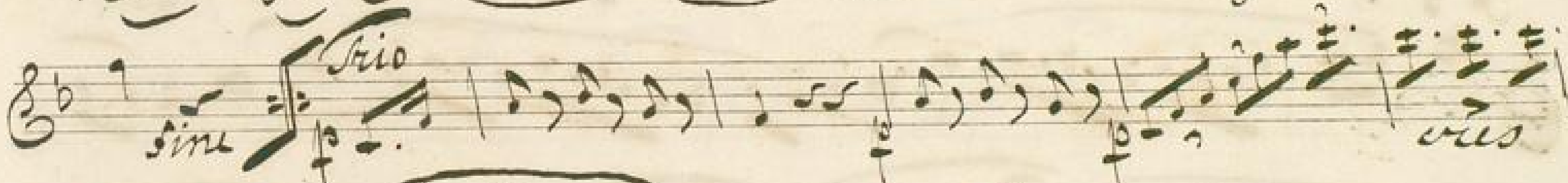


V. S.



No 261. Menuetto *no 1* L. van Beethoven

in B.



No 261. Menuetto opus 2 L. van Beethoven

in C.

Handwritten musical notation for the first system of the Minuet. It consists of five staves. The first staff begins with a treble clef, a 3/4 time signature, and a key signature of one flat (B-flat). The notation includes various note values, rests, and dynamic markings such as *cres* and *ris*. The system concludes with a *fin* marking.

Handwritten musical notation for the second system of the Minuet. It consists of five staves. The first staff begins with the word *Trio* and a treble clef. The notation continues with various note values and rests. Dynamic markings include *cres* and *ris*. The system concludes with the word *Menuetto* and *Da Capo*.



No 261. Menuetto *quarta* L. van Beethoven

Handwritten musical score for No. 261 Menuetto by L. van Beethoven. The score is written on ten staves. It begins with a treble clef, a key signature of two flats (B-flat and E-flat), and a 3/4 time signature. The first staff contains the initial melody. The second staff features a 'cres' (crescendo) marking. The third staff continues the melody with some slurs. The fourth staff has a 'cres' marking. The fifth staff continues the melody. The sixth staff begins a 'Trio' section, marked 'fina' and 'Trio', with a change in rhythm to 3/8 time. The seventh staff has a 'cres' marking. The eighth staff continues the Trio melody. The ninth staff has a 'cres' marking. The tenth staff concludes the piece with a double bar line and a repeat sign.



No. 261. Menuetto von L. van Beethoven

Handwritten musical score for Menuetto No. 261 by Ludwig van Beethoven. The score is written in treble clef with a 3/4 time signature. It begins with a tempo marking of '4.' and includes dynamic markings such as 'cres' and 'i. solo'. The piece concludes with a 'fine' marking.

No. 262. *Allegro* aus dem Sextetto von L. van Beethoven

Handwritten musical score for the Sextetto No. 262 by Ludwig van Beethoven. The tempo is marked 'Adagio' and the time signature is 3/4. The score consists of two staves of music.

No. 261. Menuette von L. van Beethoven

4.

Trio

Menuetto Da Capo.

No. 262. 1^{ma} Satz aus dem Septetto von L. van Beethoven

Adagio.

No 261. Menuetto von L. van Beethoven

in Es.

cres

cres

fine

Adagio

i. Solo

cres

Menuetto Da Capo.

No 262. 1^{tes} Satz aus dem Septetto von L. van Beethoven

in Es.

Adagio

2.

No 261. Menuetto per L. van Beethoven

Handwritten musical score for Menuetto No. 261 by Ludwig van Beethoven. The score is written on eight staves. The first staff begins with a treble clef, a key signature of two flats (B-flat and E-flat), and a 3/4 time signature. The music features various dynamics such as *mf*, *ff*, and *rit*, and includes performance markings like *cres* and *rit*. The piece concludes with a double bar line and a *rit* marking. The second staff begins with a *Trio* section, marked with a 3/4 time signature and a key signature of two flats. It includes dynamics like *mf* and *ff*, and a *cres* marking. The section ends with a double bar line and a *rit* marking. The third staff begins with a *Trio* section, marked with a 3/4 time signature and a key signature of two flats. It includes dynamics like *mf* and *ff*, and a *cres* marking. The section ends with a double bar line and a *rit* marking. The fourth staff begins with a *Trio* section, marked with a 3/4 time signature and a key signature of two flats. It includes dynamics like *mf* and *ff*, and a *cres* marking. The section ends with a double bar line and a *rit* marking. The fifth staff begins with a *Trio* section, marked with a 3/4 time signature and a key signature of two flats. It includes dynamics like *mf* and *ff*, and a *cres* marking. The section ends with a double bar line and a *rit* marking. The sixth staff begins with a *Trio* section, marked with a 3/4 time signature and a key signature of two flats. It includes dynamics like *mf* and *ff*, and a *cres* marking. The section ends with a double bar line and a *rit* marking. The seventh staff begins with a *Trio* section, marked with a 3/4 time signature and a key signature of two flats. It includes dynamics like *mf* and *ff*, and a *cres* marking. The section ends with a double bar line and a *rit* marking. The eighth staff begins with a *Trio* section, marked with a 3/4 time signature and a key signature of two flats. It includes dynamics like *mf* and *ff*, and a *cres* marking. The section ends with a double bar line and a *rit* marking.

No 262. I^{ma} Satz aus dem Septetto per L. van Beethoven

Handwritten musical score for the first movement of the Septet No. 262 by Ludwig van Beethoven. The score is written on three staves. The first staff begins with a treble clef, a key signature of two flats (B-flat and E-flat), and a 3/4 time signature. The tempo is marked *Adagio*. The music features various dynamics such as *mf* and *ff*. The second staff begins with a treble clef, a key signature of two flats (B-flat and E-flat), and a 3/4 time signature. The music features various dynamics such as *mf* and *ff*. The third staff begins with a treble clef, a key signature of two flats (B-flat and E-flat), and a 3/4 time signature. The music features various dynamics such as *mf* and *ff*.