

Badische Landesbibliothek Karlsruhe

Digitale Sammlung der Badischen Landesbibliothek Karlsruhe

101 Wind music - Don Mus.Ms. 2889

[S.l.], 1850-1874 (19.3q)

84. Jadassohn, Salomon - Psalms - Arr. winds

[urn:nbn:de:bsz:31-127643](https://nbn-resolving.org/urn:nbn:de:bsz:31-127643)

Handwritten musical score for a piece, consisting of eight staves. The notation includes treble clefs, a key signature of two flats (B-flat and E-flat), and a 3/4 time signature. The music features various rhythmic patterns, including eighth and sixteenth notes, and rests. There are several dynamic markings, including 'p' (piano) and 'f' (forte). A second ending is marked with '2.' and 'in animato'. The piece concludes with a double bar line and a decorative flourish.

No. 284. *Galm* von *Ladas* *John*

Handwritten musical score for "No. 284. Galm von Ladas John". It consists of three staves. The first staff is marked "Andante" and has a 3/4 time signature. The key signature is two flats. The music includes a first ending and a second ending marked "24.". The notation includes treble clefs, notes, rests, and dynamic markings like "p" and "f". The piece ends with a double bar line and a flourish.

No 284. Polpouri mit der Fiedel von F. Adolph

Andante $\frac{3}{4}$

No 285. Polpouri mit der Orgel A. Brennert nach Verdi

Andante C

F. Ad.

Handwritten musical score for a piece, consisting of ten staves of music in G major and 3/4 time. The notation includes various rhythmic values, slurs, and dynamic markings.

No. 284. Psalm *Opus* S. Ladasohn.

in B.
Andante *dolce*

Handwritten musical score for 'Psalm No. 284' by S. Ladasohn. It consists of three staves of music in B major and 3/4 time, marked 'Andante dolce'. The notation features slurs, accents, and dynamic markings like 'p' and 'f'.

Handwritten musical score for the first system, consisting of four staves. The notation includes various notes, rests, and dynamic markings such as *pp* and *ff*. The music is written in a common time signature.

No. 285. Polpourri aus dem Opern "Il Trovatore" v. Verdi

in. B.
Andante $\text{C} \frac{2}{4}$ *Alto assai*

Handwritten musical score for the second system, starting with the tempo marking *Andante* and the dynamic *Alto assai*. The score includes several staves of music with tempo changes to *Allegro* and *agitato*. The notation features various notes, rests, and dynamic markings.

V. S.

Handwritten musical score for a piece, consisting of eight staves. The notation includes various note values, rests, and dynamic markings. A "bis" marking is present above the second staff, and "piu animato" is written above the fourth staff. The piece concludes with a double bar line and a fermata.

No. 284. Galin von Seckelsohn.

in B.
Andante *dolce*
 Musical notation for the beginning of the piece, starting with a treble clef, a key signature of one flat (B-flat), and a 3/8 time signature. The tempo is marked "Andante" and the mood "dolce". The notation includes various note values, rests, and dynamic markings.

No. 285. Polpoari aus dem Gips. Il Trovatore Op. 9. Verdi

in B.
Andante. *Allegro*

pianissimo

No. 284. *Polka von Tschudnow*

Andante

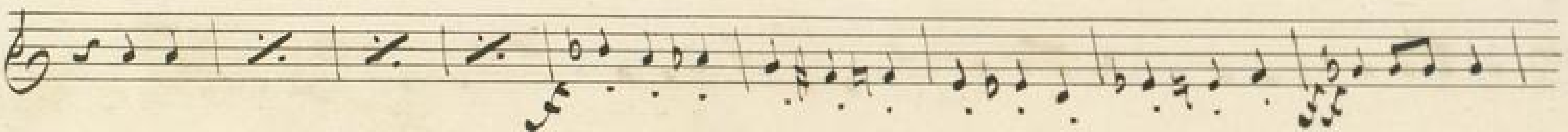
No. 284. Psalm von Ladasohn

Andante $\frac{3}{4}$

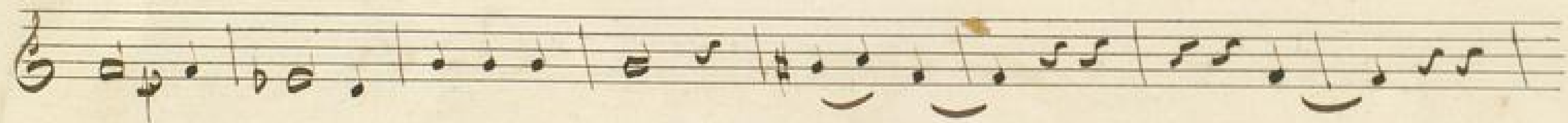
No. 285. Pot-pourri aus Il Trovatore von Verdi

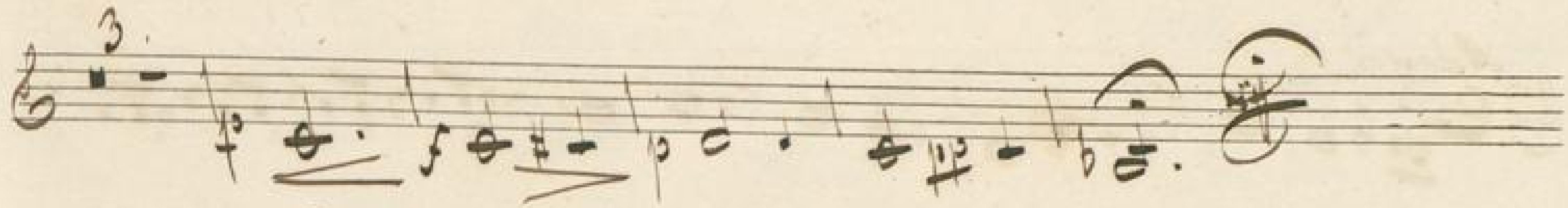
Andante $\frac{3}{4}$ *Allo assai.*

ritar. *Allegro.*

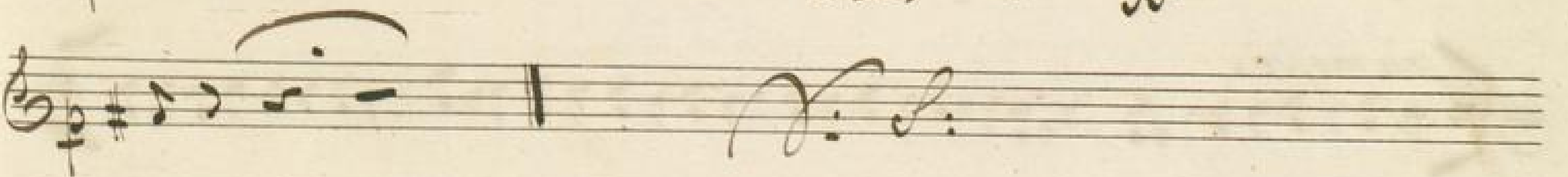
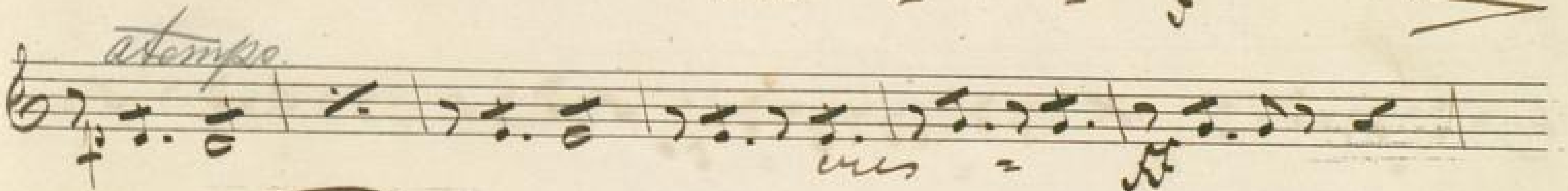
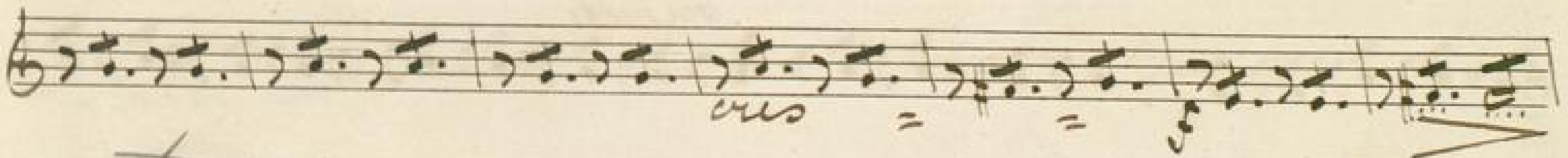
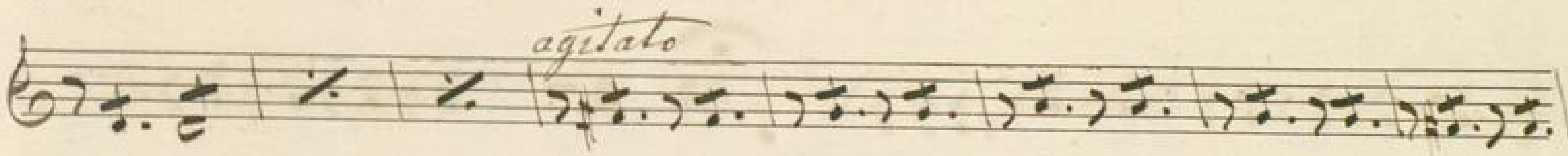
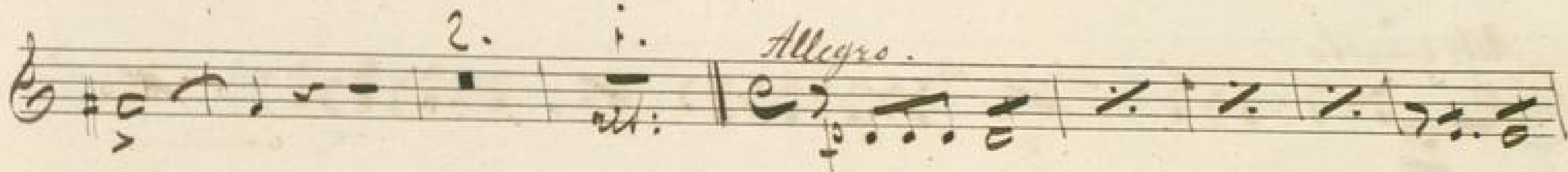
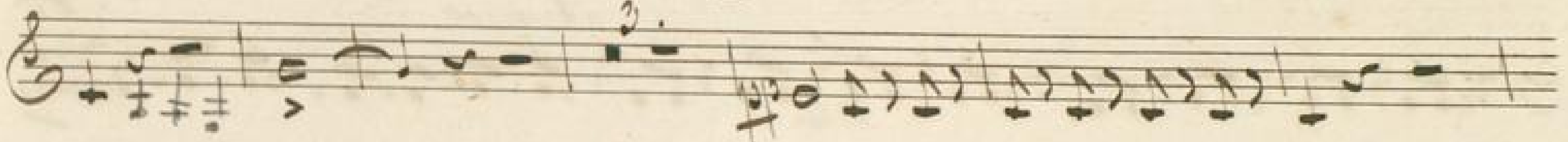


N^o 284. Palm your Tadelsohn.





No. 285. *Allegretto* aus *Il Trovatore* von Verdi

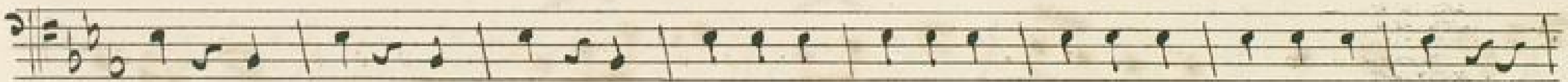
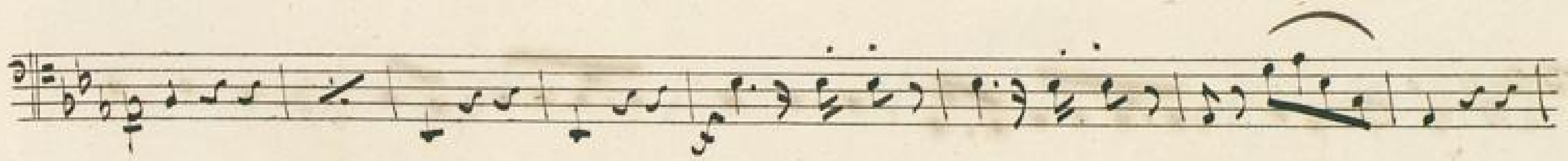


No 284. Psalm von Ladasohn

in C.
Andante *dolce*

No 285. Polpoarri aus dem Opern "Il Trovatore" von Verdi

in C.
Andante *Allegro*



No. 284. Galm für Sacksofahn



V. S.

Handwritten musical score consisting of seven staves. The notation includes various note values, rests, and dynamic markings such as 'p' and 'pp'. The music is written in a single system across the staves.

No 285. Potpourri aus "Il Trovatore" von Verdi

Handwritten musical score for 'No 285. Potpourri aus "Il Trovatore" von Verdi'. The score includes tempo markings 'Andante', 'Allegro', and 'Allegro assai', along with dynamic markings 'p' and 'pp'. It features a 'ritar.' section and a repeat sign.