

Badische Landesbibliothek Karlsruhe

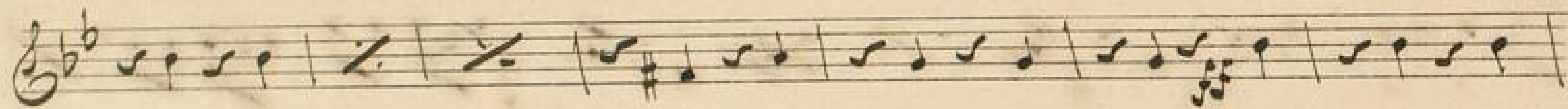
Digitale Sammlung der Badischen Landesbibliothek Karlsruhe

101 Wind music - Don Mus.Ms. 2889

[S.l.], 1850-1874 (19.3q)

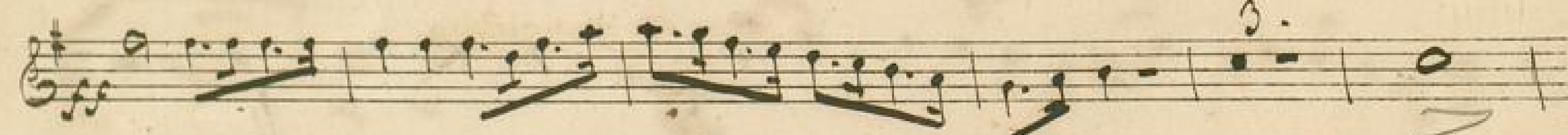
Klarinette II

[urn:nbn:de:bsz:31-127643](https://nbn-resolving.org/urn:nbn:de:bsz:31-127643)



No 240. Concertante von L. W. Halliwood

in A-



Handwritten musical notation on a single staff, featuring a treble clef, a key signature of one sharp (F#), and a 2/4 time signature. The notation includes a series of eighth and sixteenth notes with stems, and a dynamic marking 'cres' with a hairpin symbol.

Handwritten musical notation on a single staff, featuring a treble clef, a key signature of one sharp (F#), and a 2/4 time signature. The notation includes a series of eighth and sixteenth notes with stems, and several measures with a double bar line and a slash, indicating a section cut or a specific performance instruction.

Handwritten musical notation on a single staff, featuring a treble clef, a key signature of one sharp (F#), and a 2/4 time signature. The notation includes a series of eighth and sixteenth notes with stems.

Handwritten musical notation on a single staff, featuring a treble clef, a key signature of one sharp (F#), and a 2/4 time signature. The notation includes a series of eighth and sixteenth notes with stems, and a long horizontal line above the staff.

Handwritten musical notation on a single staff, featuring a treble clef, a key signature of one sharp (F#), and a 2/4 time signature. The notation includes a series of eighth and sixteenth notes with stems, and a dynamic marking 'Tempo di marcia'.

Handwritten musical notation on a single staff, featuring a treble clef, a key signature of one sharp (F#), and a 2/4 time signature. The notation includes a series of eighth and sixteenth notes with stems.

Handwritten musical notation on a single staff, featuring a treble clef, a key signature of one sharp (F#), and a 2/4 time signature. The notation includes a series of eighth and sixteenth notes with stems.

Handwritten musical notation on a single staff, featuring a treble clef, a key signature of one sharp (F#), and a 2/4 time signature. The notation includes a series of eighth and sixteenth notes with stems, and several measures with a double bar line and a slash.

Handwritten musical notation on a single staff, featuring a treble clef, a key signature of one sharp (F#), and a 2/4 time signature. The notation includes a series of eighth and sixteenth notes with stems.

Handwritten musical notation on a single staff, featuring a treble clef, a key signature of one sharp (F#), and a 2/4 time signature. The notation includes a series of eighth and sixteenth notes with stems.

Handwritten musical notation on a single staff, featuring a treble clef, a key signature of one sharp (F#), and a 2/4 time signature. The notation includes a series of eighth and sixteenth notes with stems.

N. P.

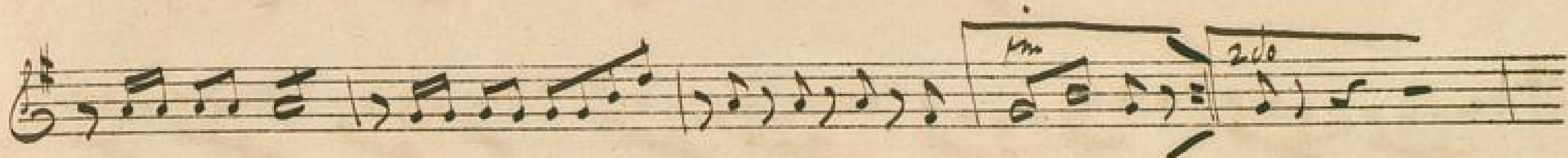
Empty musical staves at the bottom of the page.

tutti

Var. 1.

tutti

Var. 2.



Andante

Andante

Adagio

Handwritten musical notation on a single staff, featuring a treble clef, a key signature of one flat, and a common time signature. The notation includes a series of eighth and sixteenth notes, with a slur over the first few notes and the word "fio" written above. A sharp sign is visible above the staff.

Handwritten musical notation on a single staff, featuring a treble clef and a common time signature. The notation consists of a series of eighth notes, with the letters "a a a" written below the staff.

Handwritten musical notation on a single staff, featuring a treble clef and a common time signature. The notation includes a series of eighth notes and rests, with a slur over the latter part of the staff.

Handwritten musical notation on a single staff, featuring a treble clef and a common time signature. The notation includes a series of eighth notes and rests, with a slur over the latter part of the staff.

Handwritten musical notation on a single staff, featuring a treble clef and a common time signature. The notation includes a series of eighth notes and rests, with the word "Tempo tmo" written above and a sharp sign below the staff.

Handwritten musical notation on a single staff, featuring a treble clef and a key signature of one sharp. The notation includes a series of eighth notes and rests.

Handwritten musical notation on a single staff, featuring a treble clef and a key signature of one sharp. The notation includes a series of eighth notes and rests.

Handwritten musical notation on a single staff, featuring a treble clef and a key signature of one sharp. The notation includes a series of eighth notes and rests.

Handwritten musical notation on a single staff, featuring a treble clef and a key signature of one sharp. The notation includes a series of eighth notes and rests.

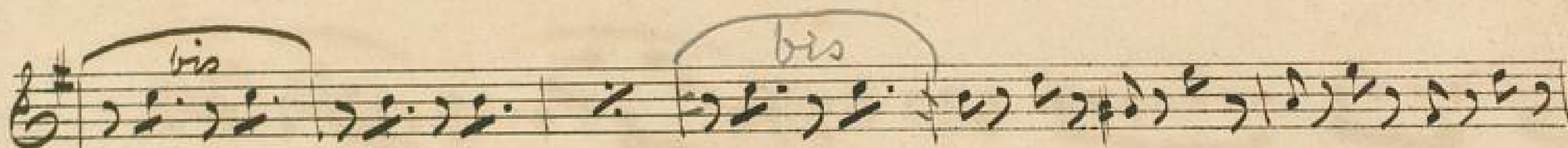
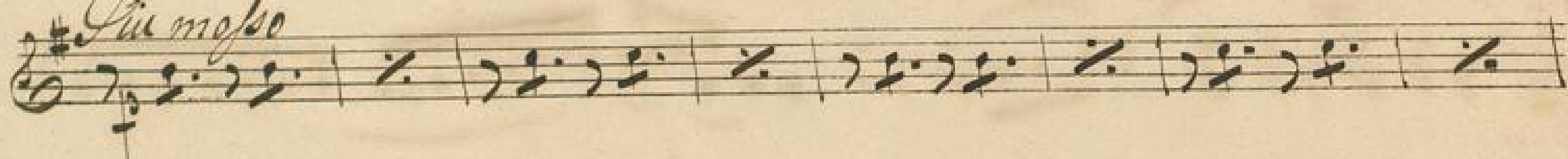
Handwritten musical notation on a single staff, featuring a treble clef and a key signature of one sharp. The notation includes a series of eighth notes and rests.

Handwritten musical notation on a single staff, featuring a treble clef and a key signature of one sharp. The notation includes a series of eighth notes and rests.

V. S.

Two empty musical staves at the bottom of the page.

Die Messe



No 21. Der Landwehmann von S. W. Wallwood

in B.

