

Badische Landesbibliothek Karlsruhe

Digitale Sammlung der Badischen Landesbibliothek Karlsruhe

101 Wind music - Don Mus.Ms. 2889

[S.l.], 1850-1874 (19.3q)

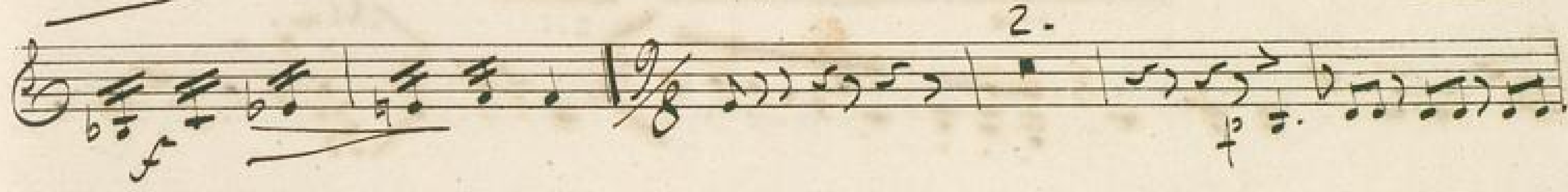
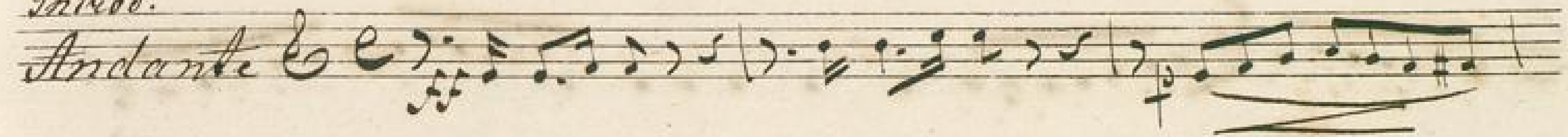
Klarinette II

[urn:nbn:de:bsz:31-127643](https://nbn-resolving.org/urn:nbn:de:bsz:31-127643)

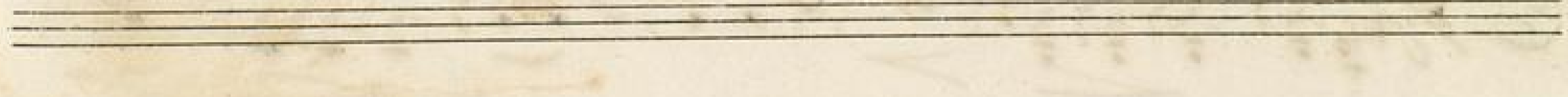


No 255. Die 23^{te} Walzer von A. Lanner

in C
Introd.



V. S. N. 1.



No 1.

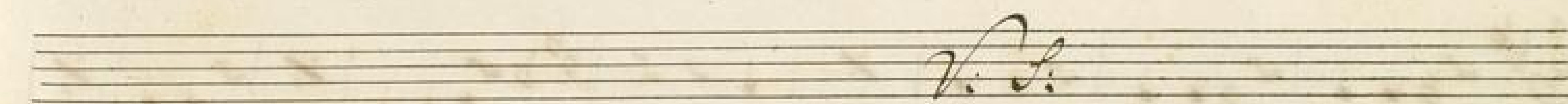
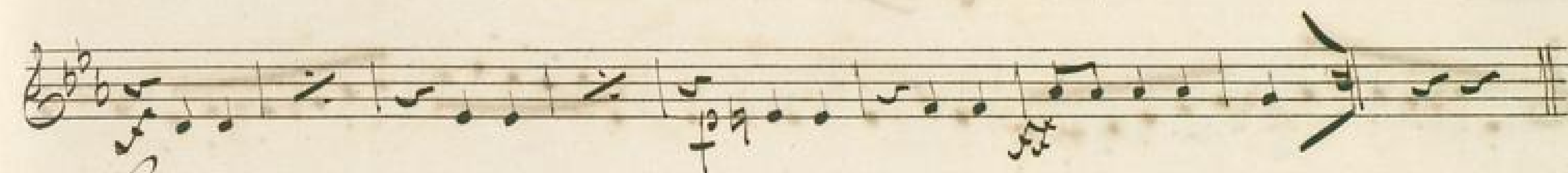
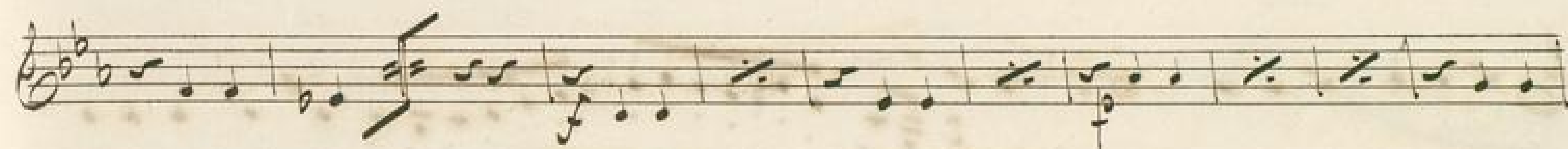
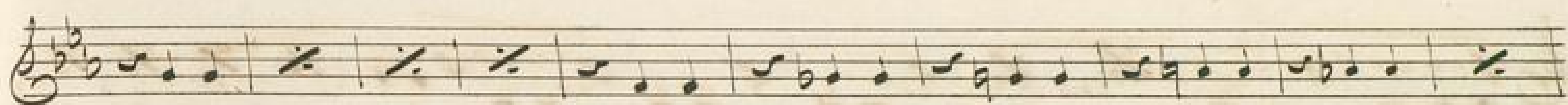
Handwritten musical score for No. 1, consisting of ten staves of music. The notation includes treble clefs, a key signature of one sharp (F#), and a 3/4 time signature. The music features various rhythmic patterns, including eighth and sixteenth notes, and rests. Dynamic markings such as *fmo* and *2do* are present. The score concludes with a double bar line and repeat signs.

No 2.

Handwritten musical score for No. 2, consisting of three staves of music. The notation includes treble clefs, a key signature of one sharp (F#), and a 3/4 time signature. The music features various rhythmic patterns, including eighth and sixteenth notes, and rests. Dynamic markings such as *fmo* and *2do* are present. The score concludes with a double bar line and repeat signs.

No 3.

Handwritten musical score for No. 3, consisting of three staves of music. The notation includes treble clefs, a key signature of one sharp (F#), and a 3/4 time signature. The music features various rhythmic patterns, including eighth and sixteenth notes, and rests. Dynamic markings such as *fmo* and *2do* are present. The score concludes with a double bar line and repeat signs.



A handwritten musical score consisting of 15 staves. The notation includes various musical symbols such as notes, rests, clefs, and dynamic markings. The score is written in a historical style, likely from the 18th or 19th century. The first staff begins with a treble clef and a key signature of one sharp (F#). The notation includes many beamed notes and rests. There are several instances of slurs and accents. The piece concludes with a double bar line and a final cadence. The paper shows signs of age, including some staining and discoloration.

No 256. Quatuor für Orgel "Ficolanthe" von Balfe

in C.

Allegro
moderato

V. S.