

Badische Landesbibliothek Karlsruhe

Digitale Sammlung der Badischen Landesbibliothek Karlsruhe

101 Wind music - Don Mus.Ms. 2889

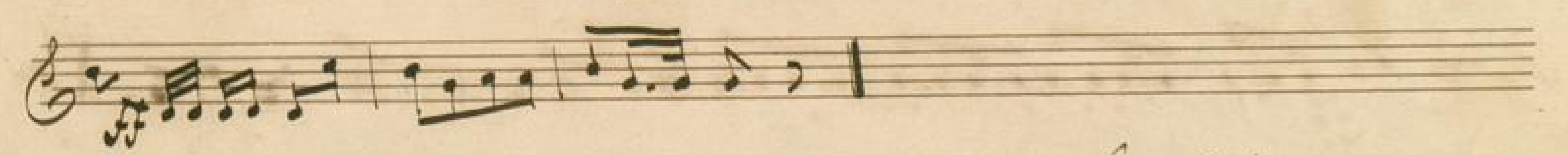
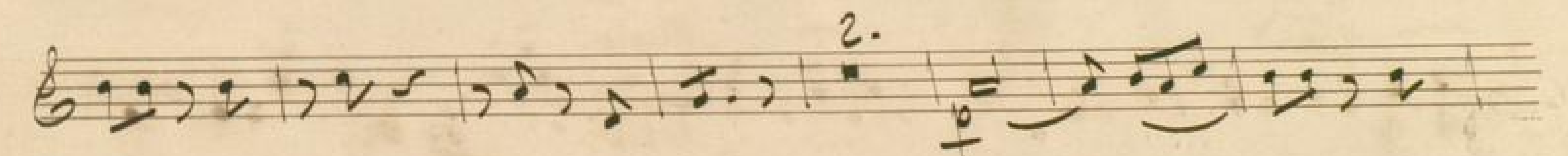
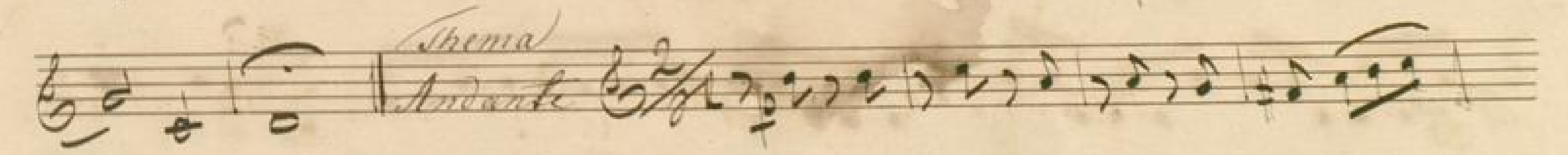
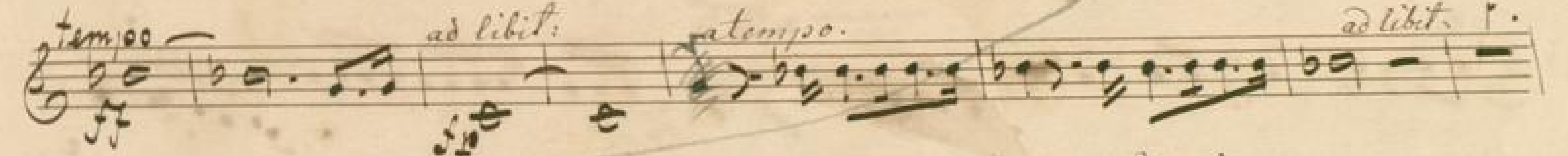
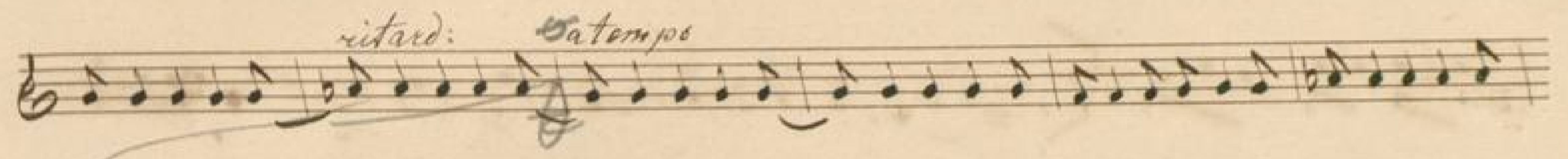
[S.l.], 1850-1874 (19.3q)

Horn I

[urn:nbn:de:bsz:31-127643](https://nbn-resolving.org/urn:nbn:de:bsz:31-127643)

No 20. Variationen für die Oboe und Fiedel

Introd:



Handwritten musical score on ten staves. The score is divided into four variations:

- Var: 1.** (Staff 1-3): Features dynamic markings *mf* and *f*, and a *tutti* section.
- Var: 2.** (Staff 4-6): Includes *ritard* and *2.* markings.
- Var: 3.** (Staff 7-9): Marked *Adagio* and *ritard*.
- Var: 4.** (Staff 10): Marked *allegro*.

The notation includes various rhythmic values, accidentals, and performance instructions. A blue line is drawn across the staves, possibly indicating a structural division or a specific musical path.

Handwritten musical notation on a single staff, featuring a treble clef, a key signature of one sharp (F#), and a 2/8 time signature. The notation includes a first ending bracket with a '2.' above it, a dynamic marking of *mp*, and a tempo change instruction *ritard. a tempo* at the end of the line.

Handwritten musical notation on a single staff, continuing the piece with various rhythmic patterns and a treble clef.

Handwritten musical notation on a single staff, featuring a treble clef and a key signature of one sharp (F#).

Handwritten musical notation on a single staff, starting with the tempo marking *Allarghetto* and a 6/8 time signature. It includes a treble clef and a key signature of one sharp (F#).

Handwritten musical notation on a single staff, continuing the *Allarghetto* section with a treble clef and a key signature of one sharp (F#).

Handwritten musical notation on a single staff, featuring a treble clef, a key signature of one sharp (F#), and a dynamic marking of *ff*.

Handwritten musical notation on a single staff, including a tempo change instruction *ritard. a tempo* and a treble clef.

Handwritten musical notation on a single staff, featuring a treble clef and a key signature of one sharp (F#).

Handwritten musical notation on a single staff, including a treble clef, a key signature of one sharp (F#), and dynamic markings of *mp* and *f*.

Handwritten musical notation on a single staff, featuring a treble clef, a key signature of one sharp (F#), and a second ending bracket with a '2.' above it.

Handwritten musical notation on a single staff, concluding the piece with a treble clef and a key signature of one sharp (F#).

Two empty musical staves at the bottom of the page.