

Badische Landesbibliothek Karlsruhe

Digitale Sammlung der Badischen Landesbibliothek Karlsruhe

101 Wind music - Don Mus.Ms. 2889

[S.l.], 1850-1874 (19.3q)

Horn I

[urn:nbn:de:bsz:31-127643](https://nbn-resolving.org/urn:nbn:de:bsz:31-127643)

No 256. Ouverture zur Oper, Nicotante und Balfo

Allegro moderato

Musical notation on a single staff.

Musical notation on a single staff with *dimi* marking.

Musical notation on a single staff with *dimi* markings.

Musical notation on a single staff with *Adagio* marking.

Musical notation on a single staff.

Musical notation on a single staff with *Allegro* marking.

Musical notation on a single staff.

Musical notation on a single staff.

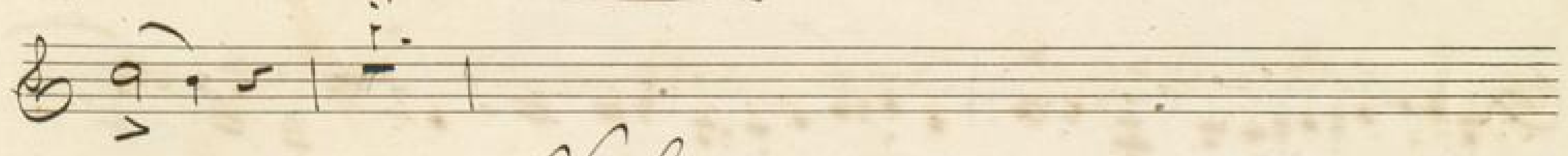
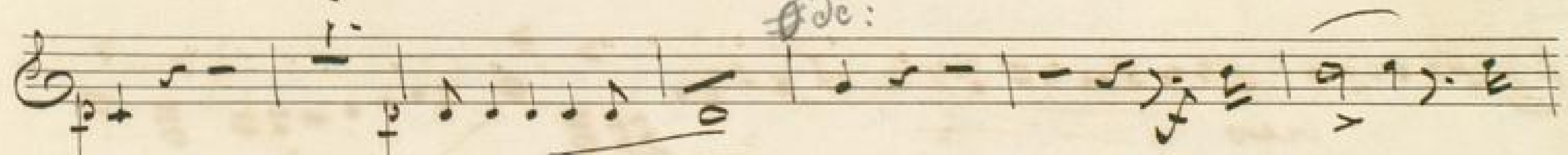
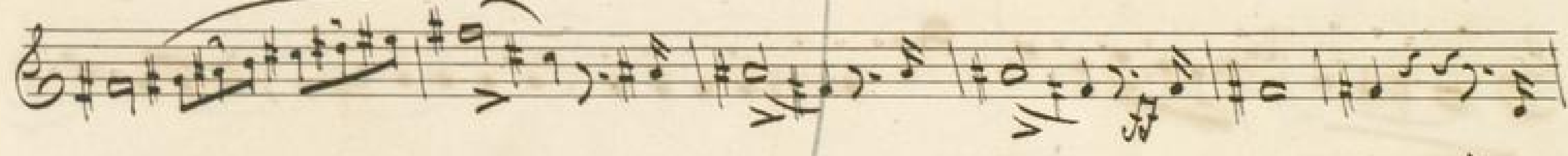
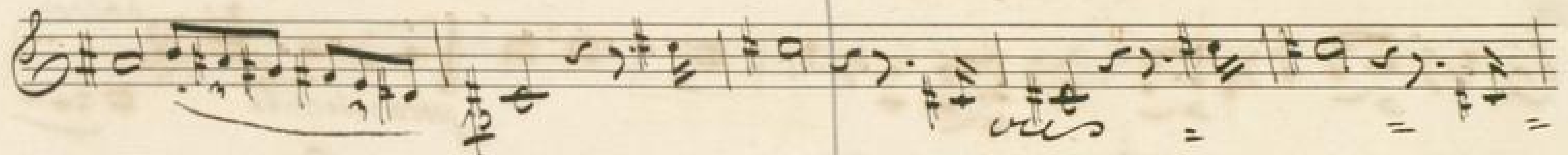
Musical notation on a single staff with *crs* marking.

V. S.

Handwritten musical score on ten staves. The notation includes treble clefs, a key signature of one sharp (F#), and various rhythmic values. The score features several dynamic markings and performance instructions:

- Staff 5: *2. Ma dolce* and *poco ritenuto*
- Staff 9: *tempo 1mo*

The music consists of a single melodic line across all staves, with some staves containing rests or specific rhythmic patterns. The notation is clear and legible, typical of a composer's manuscript.



V. L.



Handwritten musical score on ten staves. The notation includes treble clefs, a key signature of one sharp (F#), and a common time signature (C). The score features various musical notations such as notes, rests, beams, and slurs. Annotations include the word "cres" (crescendo) on the third and eighth staves, "poco ritenuto" (slightly ritardando) on the fifth staff, and "dolce" (softly) on the fifth staff. A second ending bracket labeled "2." is present on the sixth staff. The manuscript shows signs of age, including some staining and ink bleed-through.

Handwritten musical notation on a single staff, featuring a treble clef, a key signature of one flat, and various rhythmic values including eighth and sixteenth notes. The notation includes dynamic markings such as *ritar.* and *stingend.*

Handwritten musical notation on a single staff, featuring a treble clef and a key signature of one flat. It includes dynamic markings like *ritar.* and *stingend.*, and the word *ous* written below the staff.

Handwritten musical notation on a single staff, featuring a treble clef and a key signature of one flat. It includes dynamic markings like *ritar.* and *stingend.*, and the word *piu mosso* written above the staff.

Handwritten musical notation on a single staff, featuring a treble clef and a key signature of one flat, consisting of a series of rhythmic patterns.

Handwritten musical notation on a single staff, featuring a treble clef and a key signature of one flat, consisting of a series of rhythmic patterns.

Handwritten musical notation on a single staff, featuring a treble clef and a key signature of one flat, with a key signature change to two flats indicated by a sharp sign over a flat.

Handwritten musical notation on a single staff, featuring a treble clef and a key signature of one flat, with a key signature change to two flats indicated by a sharp sign over a flat.

Handwritten musical notation on a single staff, featuring a treble clef and a key signature of one flat, with a key signature change to two flats indicated by a sharp sign over a flat.

Handwritten musical notation on a single staff, featuring a treble clef and a key signature of one flat, with a key signature change to two flats indicated by a sharp sign over a flat. The word *Presto* is written above the staff.

Handwritten musical notation on a single staff, featuring a treble clef and a key signature of one flat, with a key signature change to two flats indicated by a sharp sign over a flat.

Handwritten musical notation on a single staff, featuring a treble clef and a key signature of one flat, with a key signature change to two flats indicated by a sharp sign over a flat.

Handwritten musical notation on a single staff, featuring a treble clef and a key signature of one flat, with a key signature change to two flats indicated by a sharp sign over a flat, ending with a large decorative flourish.