

# **Badische Landesbibliothek Karlsruhe**

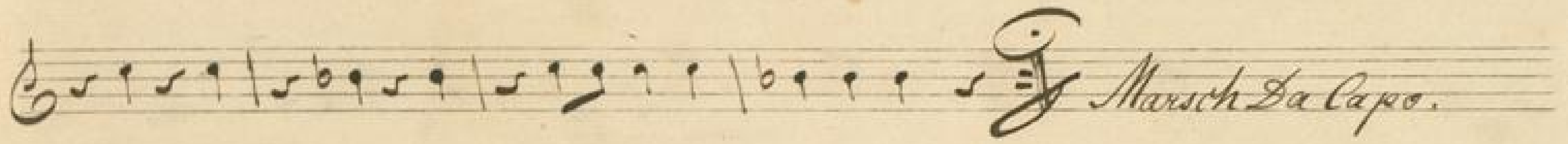
**Digitale Sammlung der Badischen Landesbibliothek Karlsruhe**

**101 Wind music - Don Mus.Ms. 2889**

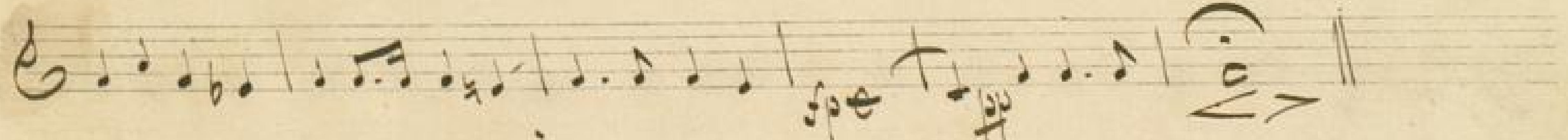
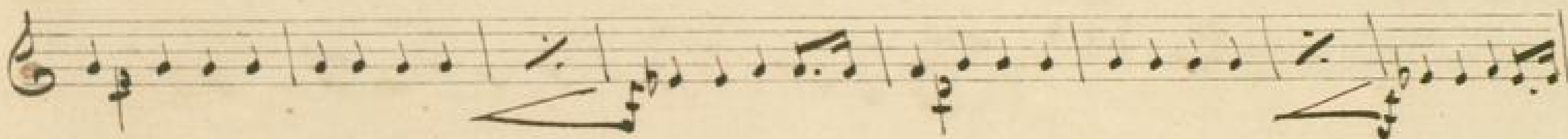
**[S.l.], 1850-1874 (19.3q)**

Horn I

[urn:nbn:de:bsz:31-127643](https://nbn-resolving.org/urn:nbn:de:bsz:31-127643)



No. 290. Festgesang an die Künstler von Mendelssohn





*Allegro*  
*assai vivace*



Handwritten musical notation on a single staff, featuring a treble clef and a series of eighth and sixteenth notes.

Handwritten musical notation on a single staff, including a treble clef, a sequence of notes, a section with dense cross-hatching, and a final measure with a whole note.

Handwritten musical notation on a single staff, starting with a treble clef and a key signature of one sharp (F#), followed by various note values and a fermata.

Handwritten musical notation on a single staff, featuring a treble clef, a key signature of one sharp, and notes with horizontal lines underneath, possibly indicating fingerings or dynamics.

Handwritten musical notation on a single staff, including a treble clef, a key signature of one sharp, and notes with vertical lines above them, possibly indicating accents or slurs.

Handwritten musical notation on a single staff, featuring a treble clef, a key signature of one sharp, and notes with vertical lines above them, continuing the previous staff's style.

Handwritten musical notation on a single staff, including a treble clef, a key signature of one sharp, and a sequence of notes.

Handwritten musical notation on a single staff, featuring a treble clef, a key signature of one sharp, and notes with slurs and accents.

Handwritten musical notation on a single staff, including a treble clef, a key signature of one sharp, and notes ending with a large, decorative flourish.

Two empty musical staves.

Two empty musical staves.