

# **Badische Landesbibliothek Karlsruhe**

**Digitale Sammlung der Badischen Landesbibliothek Karlsruhe**

## **Fernand Cortez. Excerpts - Don Mus.Ms.S.B.3 Nr.18**

**Spontini, Gaspare**

**[S.l.], 1830 (1830c)**

Fernand Cortez

[urn:nbn:de:bsz:31-128002](https://nbn-resolving.org/urn:nbn:de:bsz:31-128002)

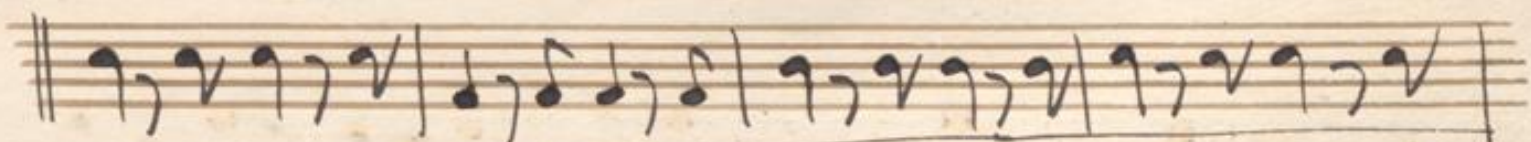
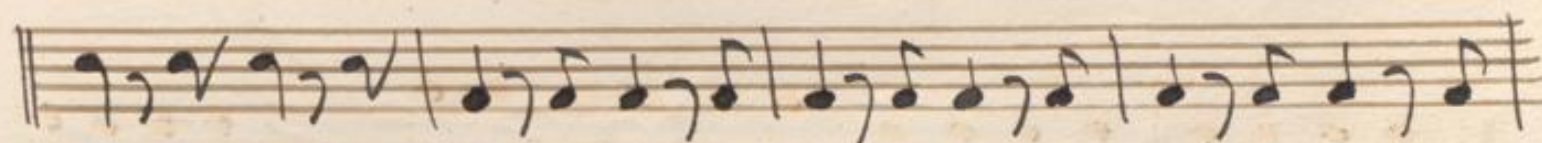
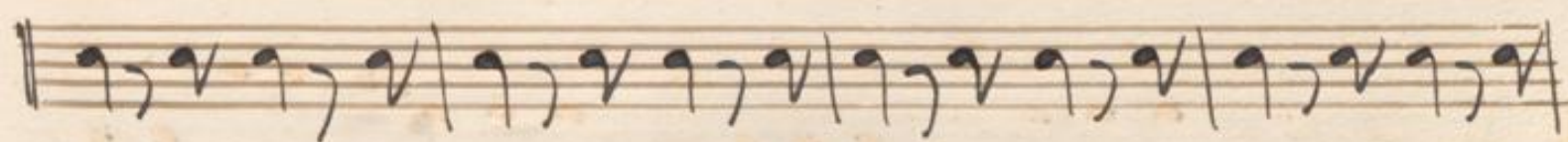
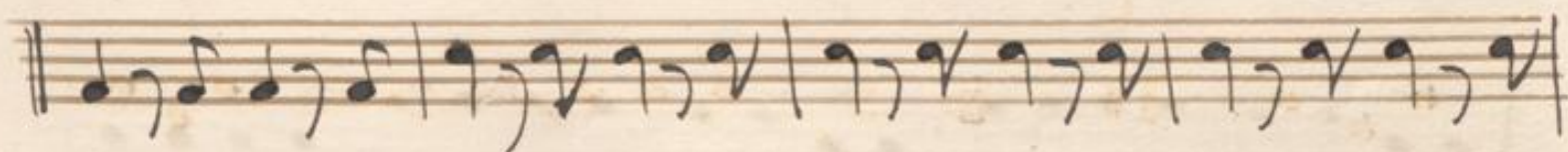
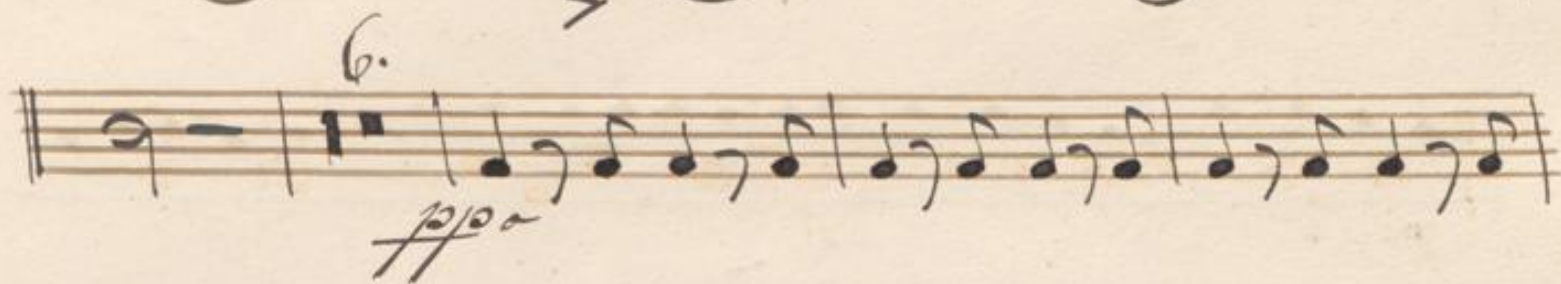
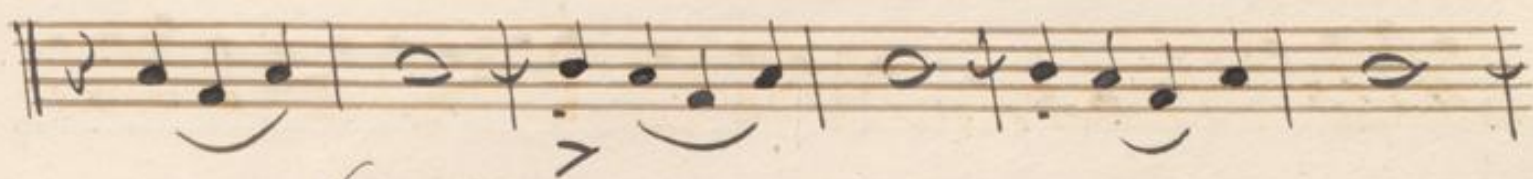


Overture *Basso.*

*Allo Vivace*  $\frac{2}{4}$

Handwritten musical score for Bassoon in 2/4 time, marked "Allo Vivace". The score consists of ten staves of music. The first staff begins with a treble clef, a key signature of one sharp (F#), and a 2/4 time signature. The music is written in a cursive hand and includes various musical notations such as notes, rests, slurs, and dynamic markings like "f." and "p.". There are also some handwritten annotations like "10.", "8.", and "2." above certain measures. The paper shows signs of age and wear.







A handwritten musical score on ten staves. The notation includes various note values, rests, and dynamic markings such as *mf*, *f*, and *pp*. There are also handwritten annotations in a cursive script, possibly indicating performance instructions or corrections. The score is organized into several measures, with some measures containing multiple notes and others being rests. The paper shows signs of age, including some staining and wear at the edges.



A handwritten musical score on ten staves. The notation includes various note values, rests, and dynamic markings. The first staff begins with a treble clef and a key signature of one sharp (F#). The score is annotated with several first and second endings, marked with '1.' and '2.'. Dynamic markings include *pp*, *ppp*, *f*, and *ff*. There are also accents (>) and slurs throughout the piece. The paper shows signs of age, including some staining and a small orange mark on the right side.



Handwritten musical score on ten staves. The first staff has a treble clef and a key signature of two sharps (F# and C#). The music consists of rhythmic patterns of eighth and sixteenth notes. A *pp* dynamic marking is present in the first staff. The fifth staff includes red ink lyrics: "eres = = = = len = = = =". The sixth staff includes red ink lyrics: "do = a p o r o = = = =". The score concludes with a double bar line on the tenth staff.



8.

*pizz.*

*pizz.*

*arco.* *cres = =*

*cres = = =*

*f.* *ff.*

*f.* *f.* *f.*



The image shows ten horizontal musical staves, each consisting of five parallel lines. The staves are arranged vertically down the page and are completely blank, with no notes or markings. The paper is aged and yellowed, with some foxing and wear visible at the edges.