

# **Badische Landesbibliothek Karlsruhe**

**Digitale Sammlung der Badischen Landesbibliothek Karlsruhe**

## **Oberon. Excerpts - Don Mus.Ms.S.B.3 Nr.21**

**Weber, Carl Maria**

**[S.l.], 1830 (1830c)**

Violine I [2. Exemplar]

[urn:nbn:de:bsz:31-128032](https://nbn-resolving.org/urn:nbn:de:bsz:31-128032)

Ouverture No: 21.

aus der Oper:

Violino 1<sup>mo</sup>

C. M. v. Weber.

137

Oberon. con Cordina.

Adagio sost.

Handwritten musical notation on a single staff, starting with a treble clef and a key signature of one sharp (F#). The notation includes a series of eighth and sixteenth notes, some beamed together, and rests.

Handwritten musical notation on a single staff, continuing the melodic line from the previous staff.

Handwritten musical notation on a single staff, featuring a more rhythmic and complex melodic passage.

Handwritten musical notation on a single staff, with a series of sixteenth-note runs.

Handwritten musical notation on a single staff, including a first ending bracket labeled '1.'.

Handwritten musical notation on a single staff, with dynamic markings 'f' and 'p'.

All<sup>o</sup> con fuoco.

Handwritten musical notation on a single staff, with dynamic markings 'f' and 'p'.

Handwritten musical notation on a single staff, with dynamic markings 'f' and 'p'.

Handwritten musical notation on a single staff, with dynamic markings 'f' and 'p'.

Handwritten musical notation on a single staff, with dynamic markings 'f' and 'p'.

Handwritten musical notation on a single staff, with dynamic markings 'f' and 'p'.

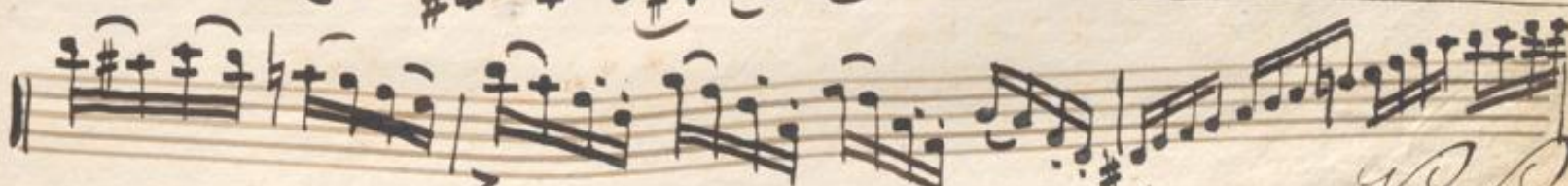
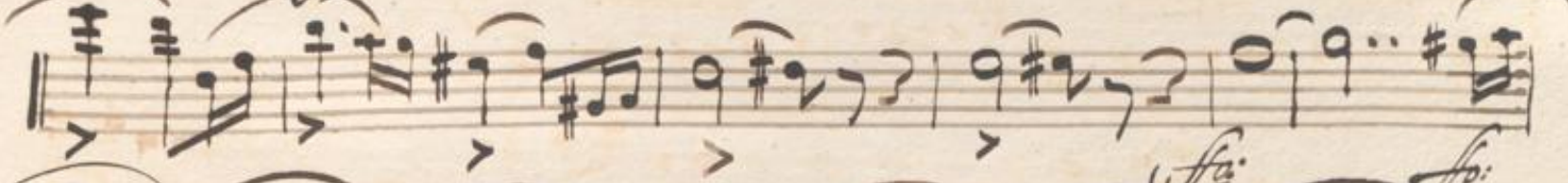
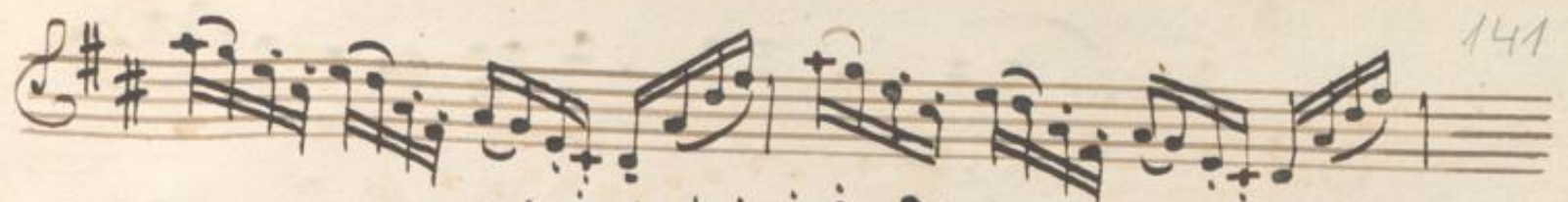
Handwritten musical notation on a single staff, ending with a double bar line and a fermata.

Handwritten musical score on ten staves. The notation includes treble clefs, a key signature of one sharp (F#), and various musical symbols such as notes, rests, and dynamic markings. The score is divided into sections by dynamic markings: "ff." at the beginning, "ppp." in the middle, and "dolce." at the end. There are also some numerical markings like "2" and "6" above notes.

A handwritten musical score on ten staves. The notation includes treble clefs, a key signature of one sharp (F#), and a common time signature (C). The music features complex rhythmic patterns with many sixteenth and thirty-second notes, often beamed together. Dynamics include *ppp*, *pp*, *f*, *ppp*, and *f*. Performance markings include accents (>), slurs, and a *Decrescen<sup>o</sup>* marking at the end of the second staff. There are also some handwritten annotations like 'A', 'B', and 'C' above certain notes in the lower staves.

Handwritten musical score on ten staves. The notation includes treble clefs, a key signature of one sharp (F#), and a common time signature (C). The score is marked with various dynamics and articulation:

- Staff 1: *ppo.* (pianissimo), *2.* (second ending)
- Staff 2: *f.* (forte), *d d d* (articulation)
- Staff 3: *ff.* (fortissimo), *ff.* (fortissimo)
- Staff 4: *ppo.* (pianissimo)
- Staff 5: *f.* (forte), *f.* (forte), *f.* (forte)
- Staff 6: *f.* (forte)
- Staff 7: *ppo.* (pianissimo), *ppo.* (pianissimo)
- Staff 8: *f.* (forte), *f.* (forte), *ppo.* (pianissimo)
- Staff 9: *f.* (forte), *f.* (forte)
- Staff 10: *f.* (forte)



*Handwritten signature or initials at the bottom right of the page.*

*Fin*  
*moto.*