

Badische Landesbibliothek Karlsruhe

Digitale Sammlung der Badischen Landesbibliothek Karlsruhe

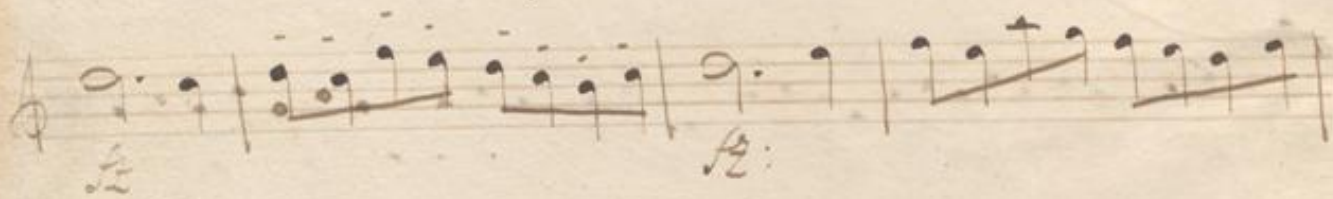
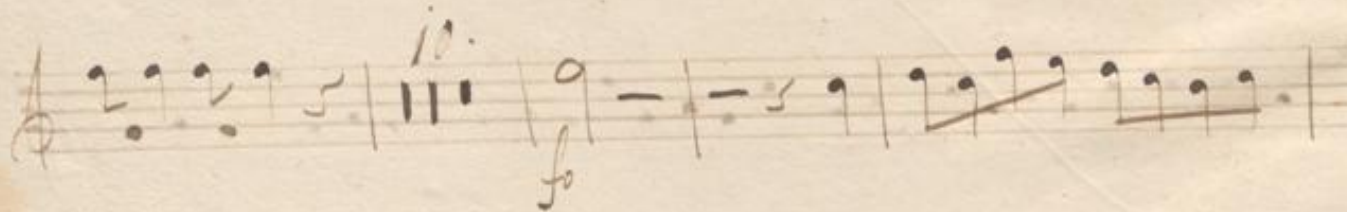
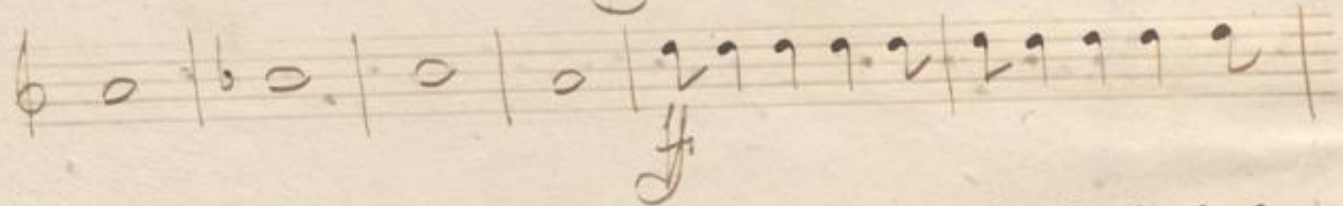
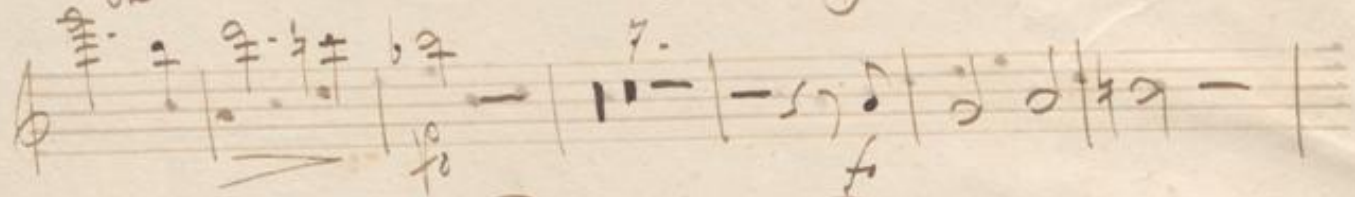
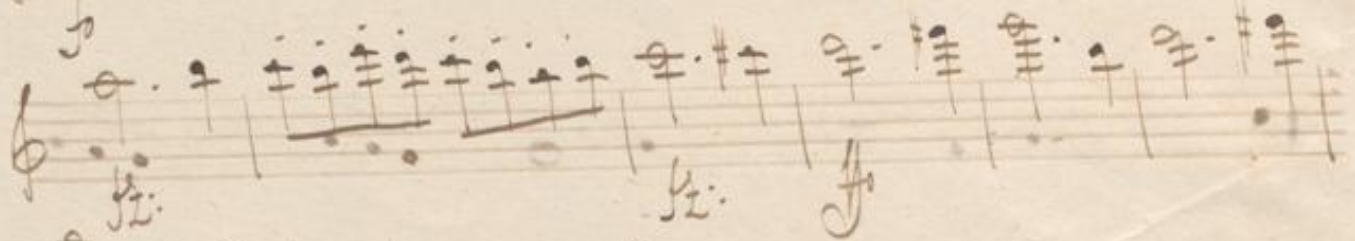
Iphigénie en Aulide. Excerpts - Don Mus.Ms.S.B.3 Nr.20

Gluck, Christoph Willibald

[S.l.], 1830 (1830c)

Flöte II

[urn:nbn:de:bsz:31-128020](https://nbn-resolving.org/urn:nbn:de:bsz:31-128020)



M. P.

159

149

Handwritten musical score consisting of ten staves. The notation includes various rhythmic values, accidentals, and dynamic markings such as *f*, *ten:*, and *ff*. The piece concludes with the instruction *Bringendo.*

Handwritten musical score on ten staves. The first five staves are treble clef with a key signature of one sharp (F#). The sixth staff is a bass clef line with a '4.' above it and 'f' below it. The seventh staff is a bass clef line with a 'p.' above it. The eighth and ninth staves are treble clef with a key signature of one sharp (F#). The tenth staff is empty.

M. D.

159

151

Handwritten musical notation on four staves. The first three staves contain melodic lines with various note values and rests. The fourth staff contains a few notes and a final cadence-like symbol. The notation is in a historical style, possibly from the 18th or 19th century.

Eight empty musical staves, arranged in four pairs, occupying the lower half of the page. They are blank, with only the five-line structure visible.

152

