

Badische Landesbibliothek Karlsruhe

Digitale Sammlung der Badischen Landesbibliothek Karlsruhe

Iphigénie en Aulide. Excerpts - Don Mus.Ms.S.B.3 Nr.20

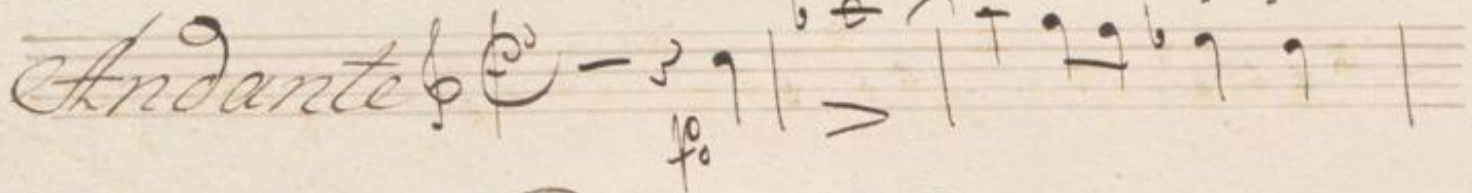
Gluck, Christoph Willibald

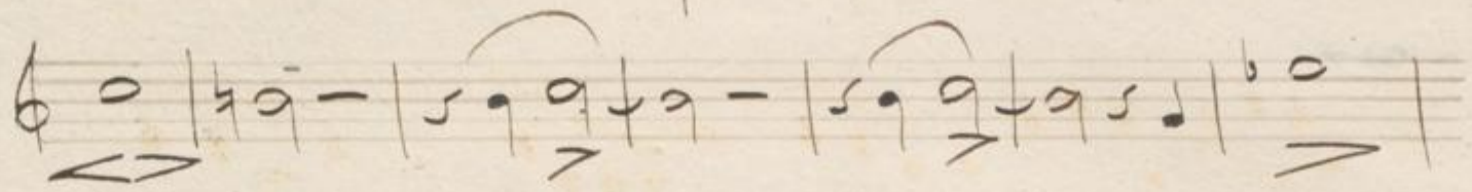
[S.l.], 1830 (1830c)

Iphigénie en Aulide

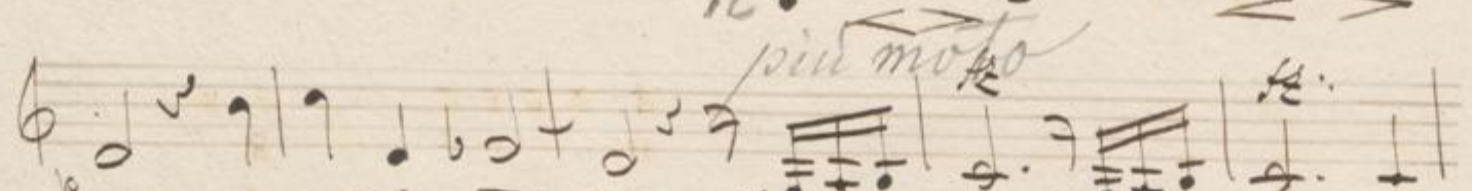
[urn:nbn:de:bsz:31-128020](https://nbn-resolving.org/urn:nbn:de:bsz:31-128020)

Overture. Violino Secondo

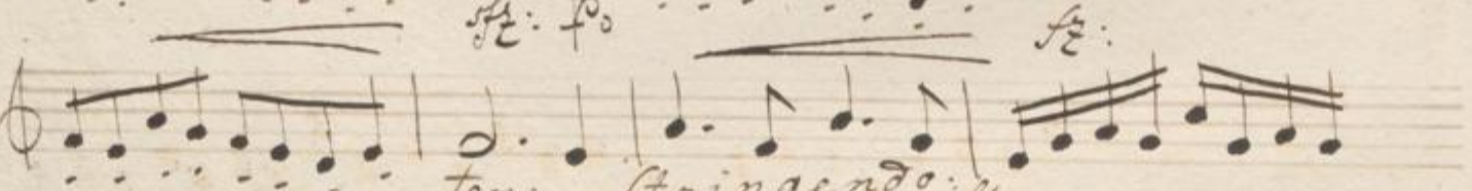
Andante 

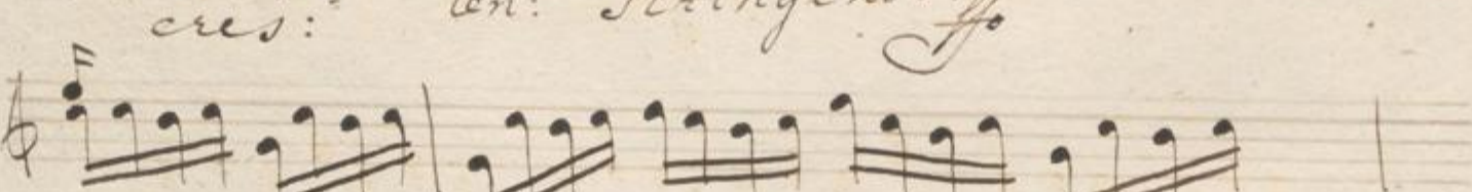


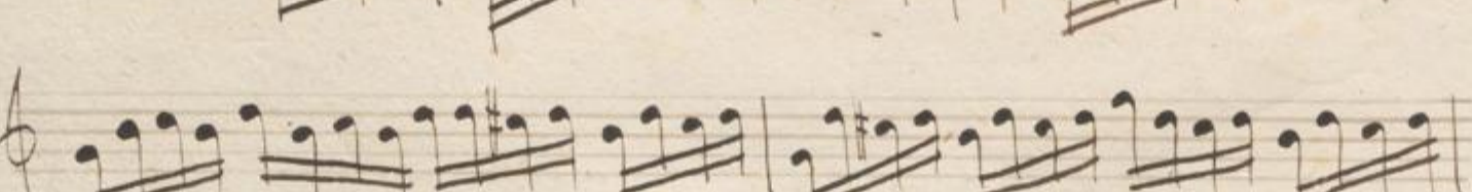




piu moto 


sfz: f 

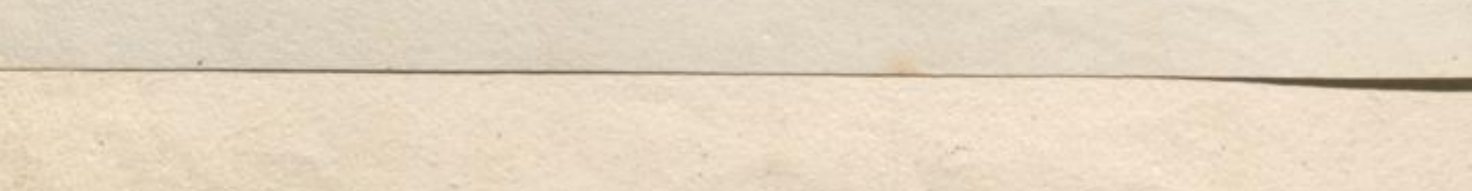
cres: ten: Stringendo f 

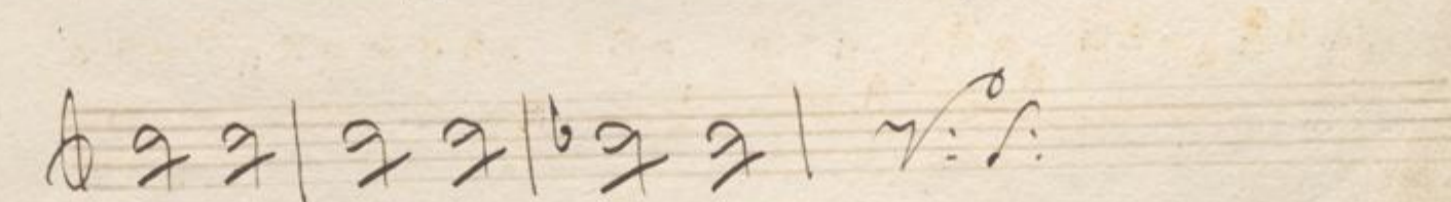
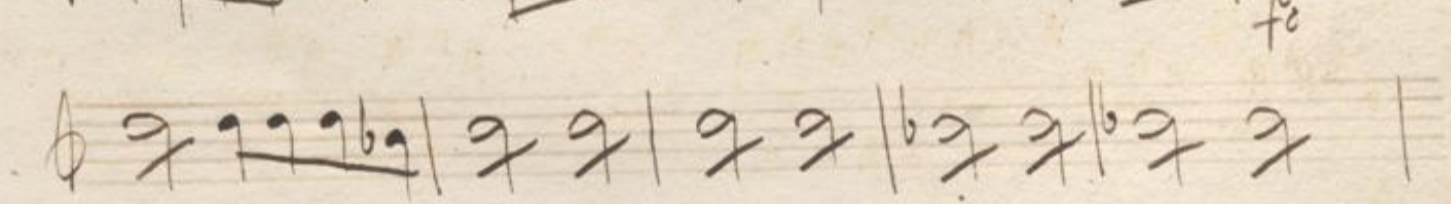
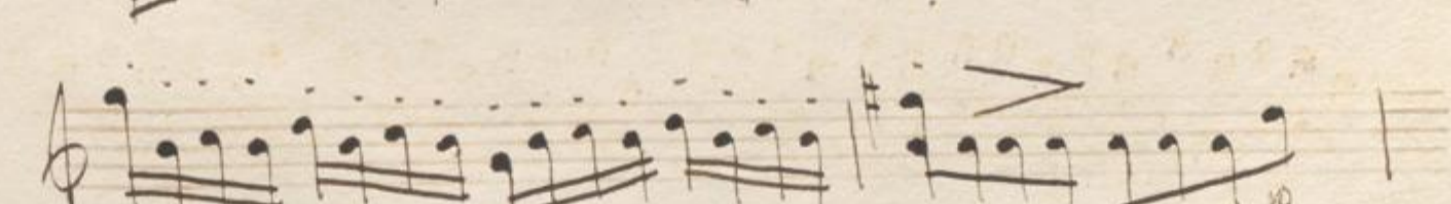
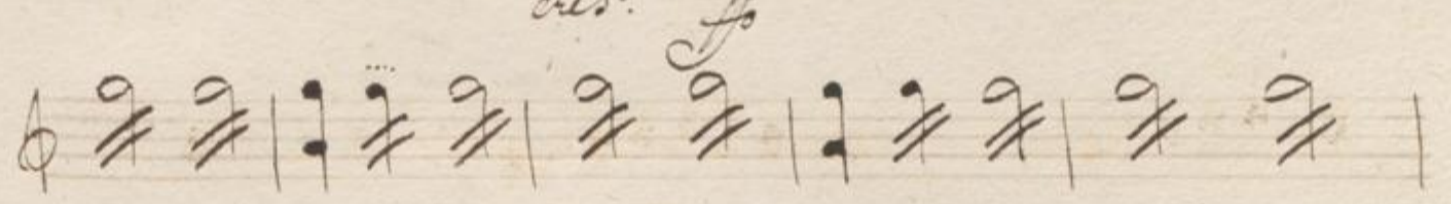
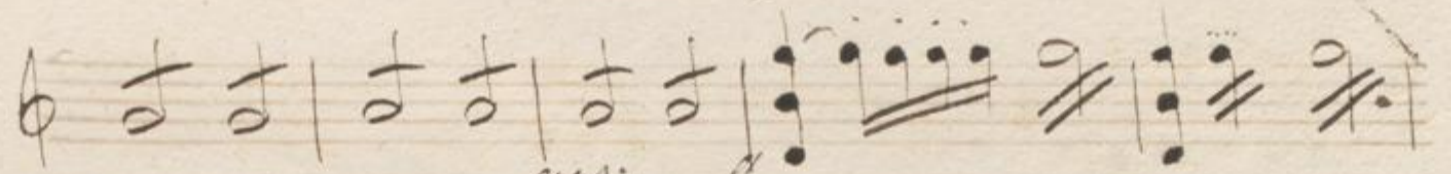
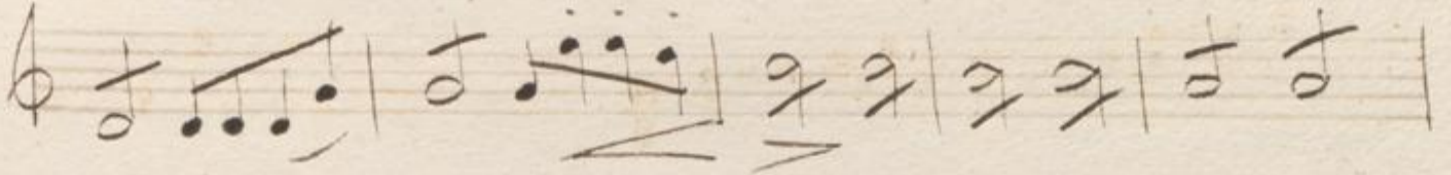
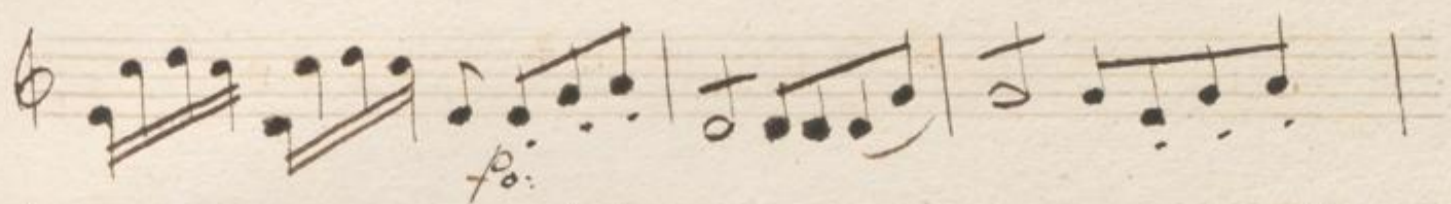












A handwritten musical score on ten staves. The notation is in a single system, likely for a single instrument. The key signature has one sharp (F#), and the time signature is 3/4. The score begins with a treble clef and a key signature of one sharp. The first staff contains a melodic line with a dynamic marking of *f* (forte) and a hairpin crescendo. The second staff continues the melodic line with a dynamic marking of *ff* (fortissimo). The third staff shows a melodic line with a dynamic marking of *f*. The fourth staff features a melodic line with a dynamic marking of *ff*. The fifth staff contains a melodic line with a dynamic marking of *f*. The sixth staff shows a melodic line with a dynamic marking of *f*. The seventh staff features a melodic line with a dynamic marking of *f*. The eighth staff contains a melodic line with a dynamic marking of *f*. The ninth staff shows a melodic line with a dynamic marking of *f*. The tenth staff concludes the piece with a melodic line and a dynamic marking of *f*.

Handwritten musical score on ten staves. The notation includes various note values, rests, and dynamic markings such as "cres.", "f", "R.", and "bis". A red double bar line is present on the sixth staff.

A single line of handwritten musical notation at the bottom of the page, partially cut off by the binding.

A handwritten musical score on ten staves. The notation includes various rhythmic values, accidentals, and dynamic markings. The first staff begins with a treble clef and a common time signature. The second staff has the marking "cres. f" below it. The third staff features a key signature change to one sharp (F#). The fourth staff has a dynamic marking "f" below it. The fifth staff has a dynamic marking "f" below it. The sixth staff has a dynamic marking "f" below it. The seventh staff has a dynamic marking "f" below it. The eighth staff has a dynamic marking "f" below it. The ninth staff has a dynamic marking "f" below it. The tenth staff has a dynamic marking "f" below it.

Handwritten musical score on page 137, featuring multiple staves with notes, rests, and dynamic markings such as 'f', 'ten.', and 'Stringendo'. The notation includes various rhythmic values, accidentals, and articulation marks. The score is written in a cursive hand on aged paper.

A single line of handwritten musical notation at the bottom of the page, continuing the piece. It features a series of notes and rests, ending with a double bar line and a fermata.

A handwritten musical score consisting of ten staves. The notation is in a single system, likely for a keyboard instrument. The first staff begins with a treble clef and a key signature of one sharp (F#). The music is written in a style characteristic of the 18th or 19th century, featuring a mix of eighth and sixteenth notes, often beamed together. There are several dynamic markings, including 'f' (forte) and 'fmo.' (finito). The score concludes with a double bar line and a fermata on the final note of the tenth staff. The paper shows signs of age, with some staining and wear at the edges.