

Badische Landesbibliothek Karlsruhe

Digitale Sammlung der Badischen Landesbibliothek Karlsruhe

Iphigénie en Aulide. Excerpts - Don Mus.Ms.S.B.3 Nr.20

Gluck, Christoph Willibald

[S.l.], 1830 (1830c)

Horn II in C

[urn:nbn:de:bsz:31-128020](https://nbn-resolving.org/urn:nbn:de:bsz:31-128020)

No. 20.
Overture

Corrad. Lodo in C.

20
71

18. Allegro. ten

Andante C C — | — 5 7 2 | 9 7 2 |

ten. f f
9 2 | — 5 7 2 | 9 2 | — 5 7 2 | 9 2 |

ten. f
— 5 7 2 | 9 2 | — 5 7 2 | 9 2 | 9 2 | 9 2 | 9 2 |

6.
9 2 | 9 2 | 9 2 | 9 2 | 9 2 | 9 2 |

5. ff f
9 — | 9 — | 9 — | — 5 7 2 | 9 2 |

f f
9 2 | — 5 7 2 | 9 2 | — 5 7 2 | 9 2 |

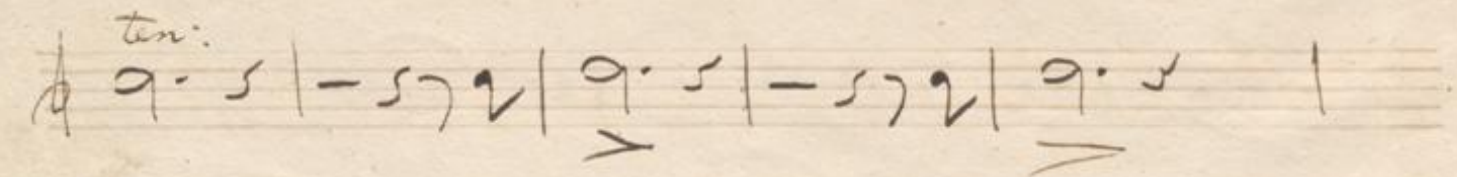
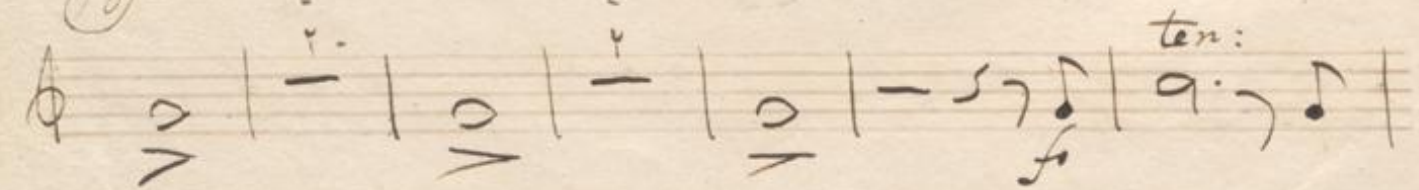
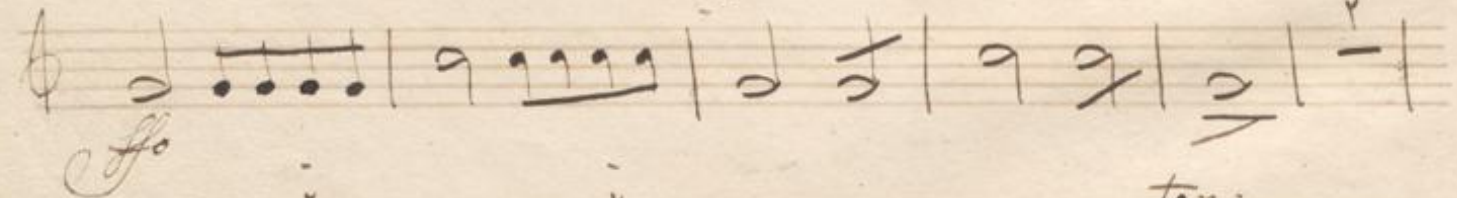
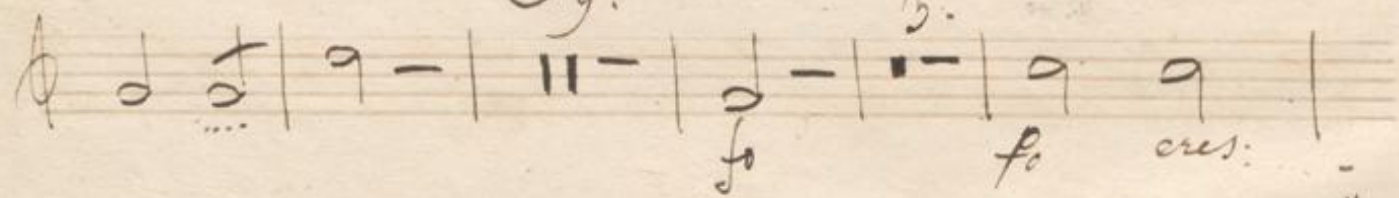
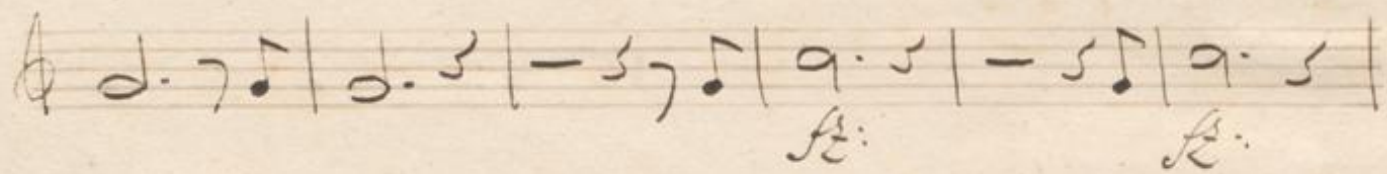
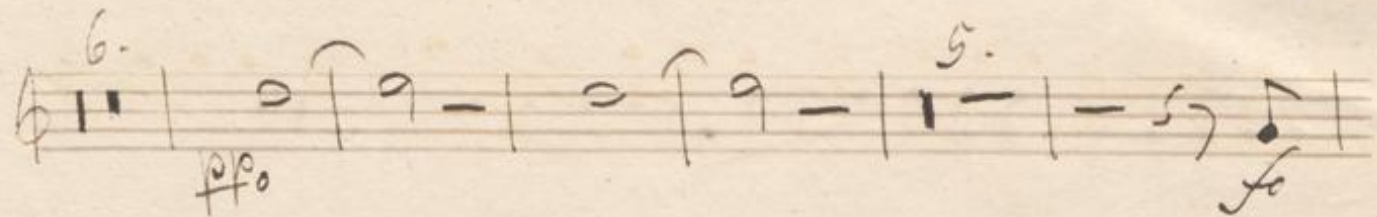
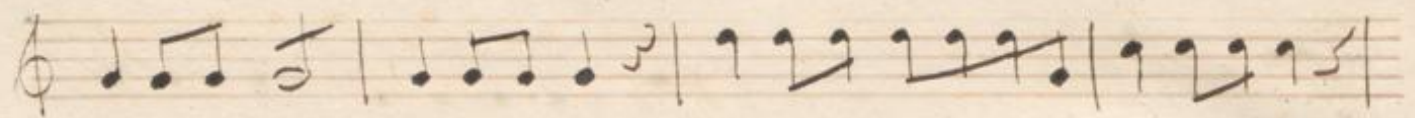
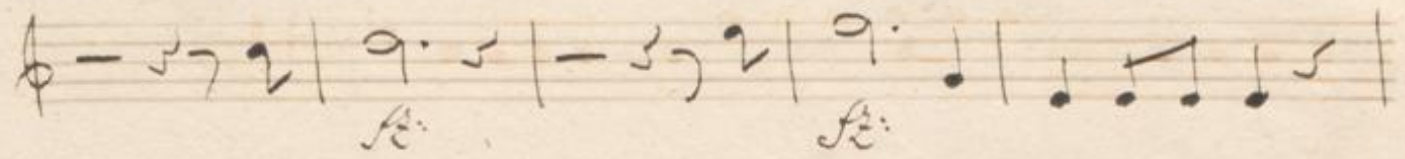
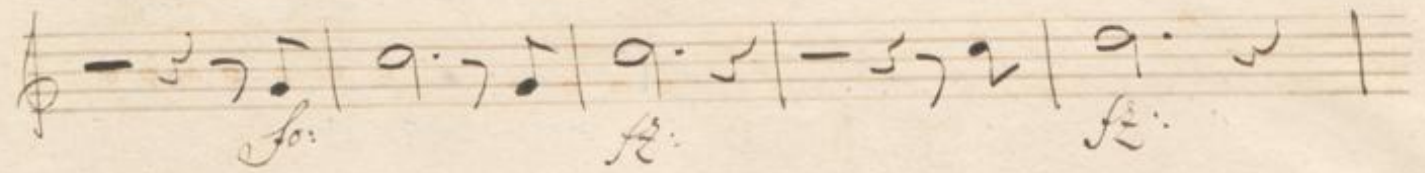
f f
— 5 7 2 | 9 2 | 9 2 | 9 2 | 9 2 | 9 2 |

9. f 21. ff
9 — | — 5 7 2 | 9 2 | — 5 7 2 | 9 2 |

9 2 | 9 2 | 9 2 | 9 2 | 9 2 | 9 2 |

9. f
9 2 | 9 2 | 9 2 | — 5 7 2 | 9 2 |

ine



Handwritten musical notation on a single staff, starting with a treble clef and a common time signature. It features a sequence of notes and rests, with a dynamic marking 'f' (forte) and a fermata over a note.

Handwritten musical notation on a single staff, continuing the piece with various rhythmic values and a double bar line at the end.

Handwritten musical notation on a single staff, featuring several measures with notes and rests, including dynamic markings 'f' and 'ff' (fortissimo).

Handwritten musical notation on a single staff, showing a series of rhythmic patterns and notes.

Handwritten musical notation on a single staff, including notes, rests, and dynamic markings like 'f'.

Handwritten musical notation on a single staff, featuring notes and rests.

Handwritten musical notation on a single staff, concluding with a double bar line and a fermata.

Four empty musical staves, indicating that the piece has ended and no further notation is present on this page.

Vertical markings on the right margin of the page, including some faint numbers and symbols.

