

# **Badische Landesbibliothek Karlsruhe**

**Digitale Sammlung der Badischen Landesbibliothek Karlsruhe**

## **Le Jeune Henri. Excerpts - Don Mus.Ms.S.B.3 Nr.19**

**Méhul, Étienne Nicolas**

**[S.l.], 1830 (1830c)**

Violine I

[urn:nbn:de:bsz:31-128015](https://nbn-resolving.org/urn:nbn:de:bsz:31-128015)

<sup>5</sup>  
Nro: 19.

Ouverture

à

grand Orchestre

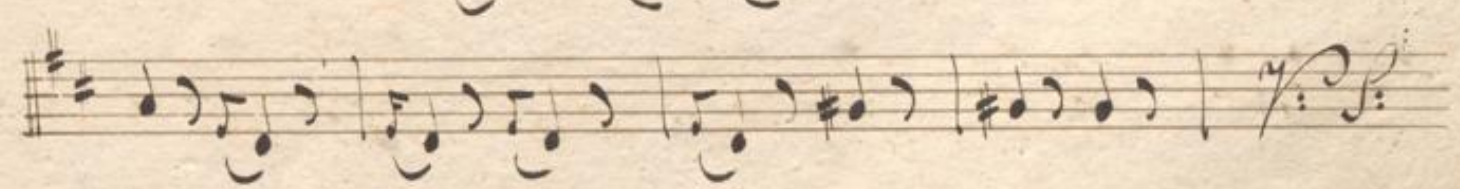
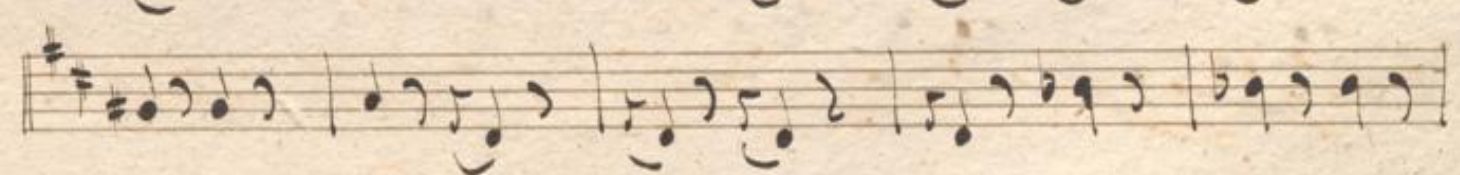
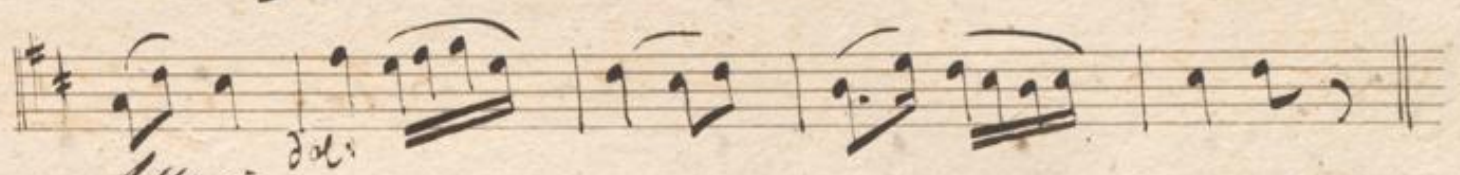
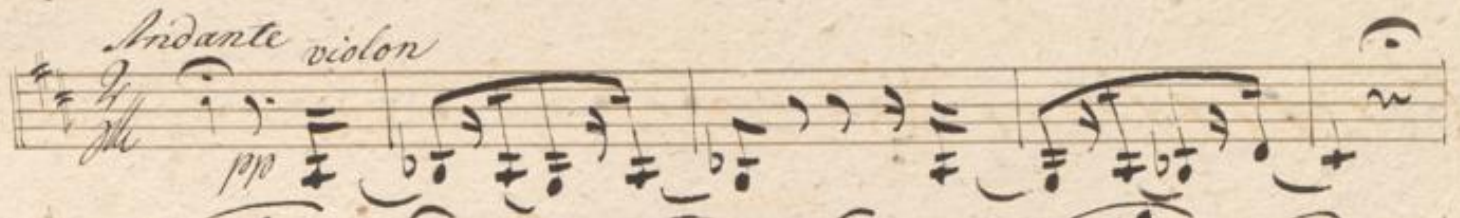
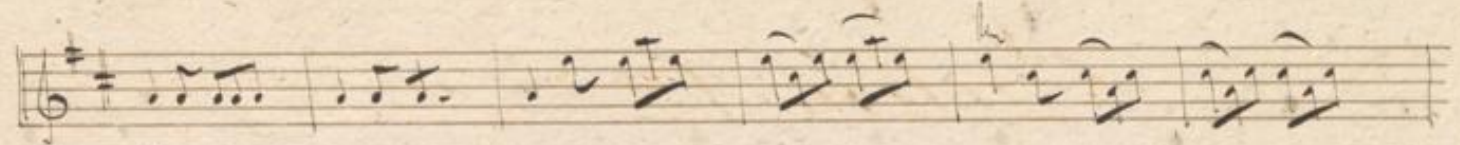
du Jeune Henry Chasse

par

F. A. Chel.

Violino I<sup>mo</sup>





A handwritten musical score on 11 staves. The notation includes various note values, rests, and dynamic markings. The first staff begins with a treble clef and a key signature of one sharp (F#). The second staff contains the annotation "cres." and the third staff contains "poco a". The fourth staff contains "poco". The score concludes with a double bar line and a fermata on the final note of the eleventh staff. The paper shows signs of age, including foxing and some staining.

Handwritten musical notation on two staves. The first staff contains notes with fingerings 6, 7, 8, 9, 10, 11, and 12 written above them. The second staff contains a bass line with various rhythmic values and accidentals.

Handwritten musical notation on a single staff, continuing the melodic line from the previous section.

Handwritten musical notation on a single staff, starting with the dynamic marking *Coeno*.

Handwritten musical notation on a single staff, starting with the dynamic marking *violon*.

Handwritten musical notation on a single staff, continuing the melodic line.

Handwritten musical notation on a single staff, starting with the dynamic marking *del:*.

Handwritten musical notation on a single staff, continuing the melodic line.

Handwritten musical notation on a single staff, featuring a complex rhythmic pattern.

Handwritten musical notation on a single staff, continuing the melodic line.

Handwritten musical notation on a single staff, starting with the dynamic marking *Scatto*.

Handwritten musical notation on a single staff, concluding the piece with a double bar line and repeat sign.

135

*violon*

Handwritten musical score for violin, measures 1-18. The notation is on a single staff in G major (one sharp) and 3/4 time. It features a melodic line with various note values, including eighth and sixteenth notes, and rests. A *dal.* (ritardando) marking is present in measure 10. The piece concludes with a double bar line in measure 18.

*violon*

Handwritten musical score for violin, measures 19-24. The notation is on a single staff in G major and 3/4 time. It continues the melodic line from the previous system. A *violon* marking is written below the staff in measure 23. The piece concludes with a double bar line in measure 24.

*violon*

A handwritten musical score on 12 staves. The notation includes treble clefs, a key signature of one sharp (F#), and a common time signature (C). The score features a variety of rhythmic values, including eighth and sixteenth notes, and rests. Several staves contain dense, rapid passages, likely for a keyboard instrument. Dynamic markings are present: *mf* (mezzo-forte) at the beginning of the second staff, *dim* (diminuendo) on the third staff, *a poco* (a little) on the fourth staff, *pp* (pianissimo) on the sixth staff, and *ppp* (pianississimo) on the seventh staff. The paper shows signs of age, including foxing and a large tear at the bottom edge.



*cres.*

*cres.*

*rallent un poco*

*violon*

*p*

Handwritten musical score for Clarinetto and Violon. The score consists of 14 staves. The first staff is the Clarinetto part, and the second staff is the Violon part. The music is written in a key signature of one sharp (F#) and a common time signature (C). The notation includes various note values, rests, and dynamic markings such as *Clarinetto*, *Violon*, and *coll.*. There are some corrections and markings on the staves, including a circled 'X' on the 7th staff. The paper shows signs of age and wear.

A handwritten musical score on 11 staves. The notation includes treble clefs, a key signature of one sharp (F#), and a common time signature (C). The score features a variety of rhythmic values, including eighth and sixteenth notes, and rests. There are several dynamic markings: *pp* (pianissimo) on the second staff, *de* on the fourth staff, and *crs.* (crescendo) on the fifth staff. The manuscript shows signs of age, with some ink bleed-through and foxing. The bottom edge of the page is torn.

A handwritten musical score consisting of eight staves. The notation includes various rhythmic values such as eighth and sixteenth notes, often beamed together. There are also rests and some decorative flourishes. The paper shows signs of age, including foxing and staining.

*Fine*

Five empty musical staves, each consisting of five horizontal lines, arranged vertically below the 'Fine' marking.

This image shows a page of handwritten musical notation on aged, yellowed paper. The page is numbered '141' in the top left corner. It contains 14 horizontal staves, each with five lines. The notation is sparse, consisting of small, dark dots (likely representing notes) scattered across the staves. There are some faint, illegible markings and smudges on the paper, particularly in the middle and lower sections. The paper shows signs of wear, including a large tear along the bottom edge and some foxing or staining.

No. 19.

117

Ouverture

de Gene Henry Chasse

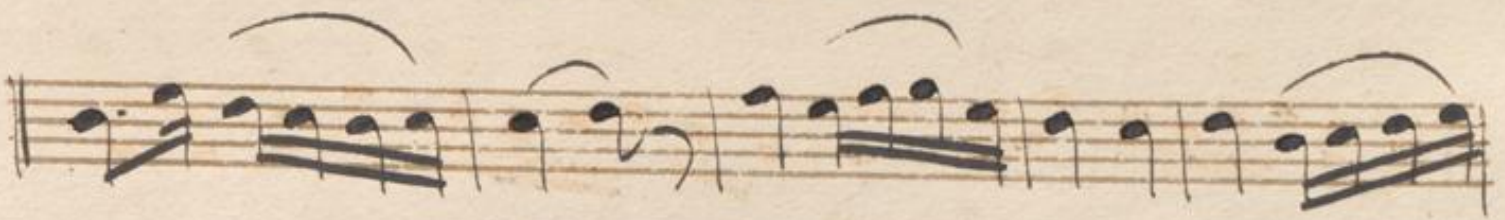
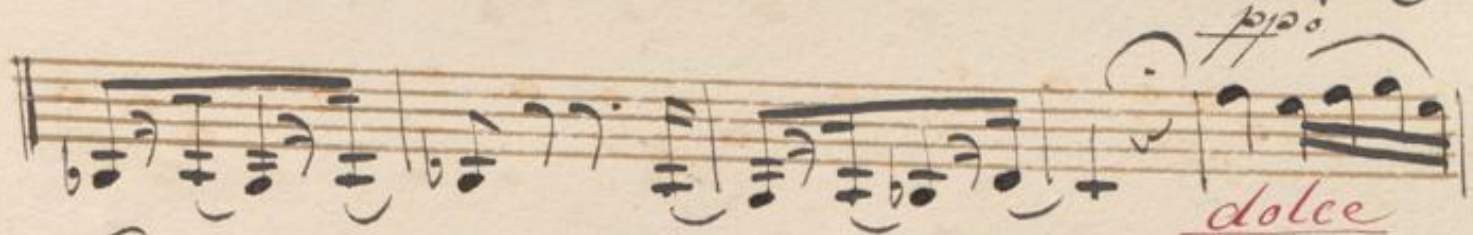
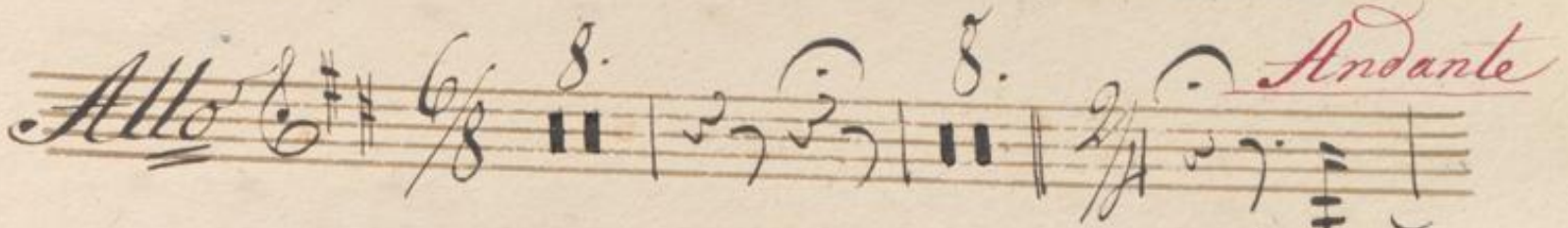
Violino primo.

*Sinfonie W*  
*Ouverture Violino primo*

*mehl*

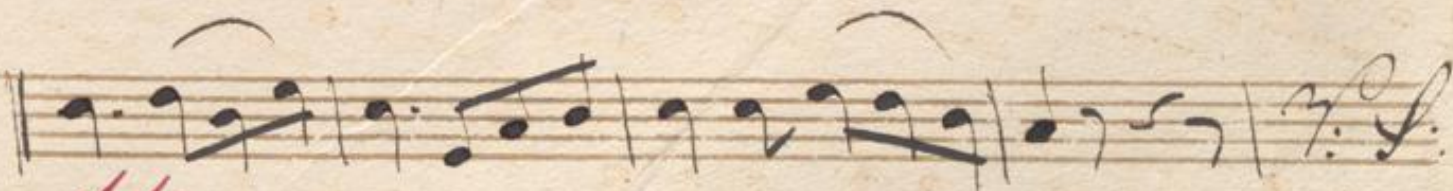
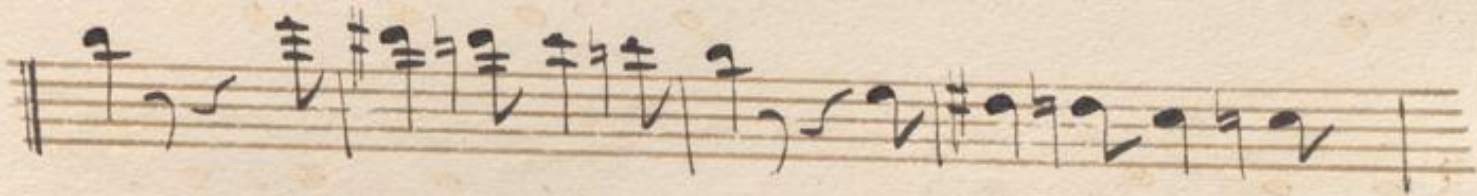
*Andante*

2.  
3.  
sf.  
7.  
cresc  
p/oo  
fr  
>  
>  
>  
>





Handwritten musical score on ten staves. The notation includes various note values, rests, and dynamic markings such as 'es', 'a', 'p', 'f', and 'g'. The music is written in a single system across the page.



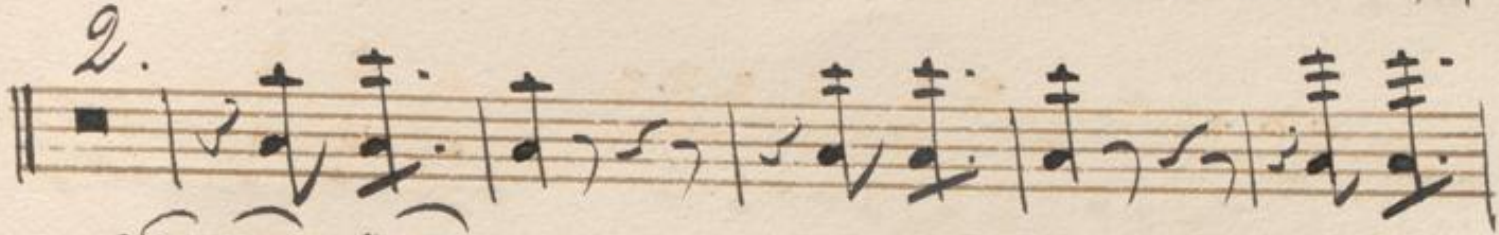
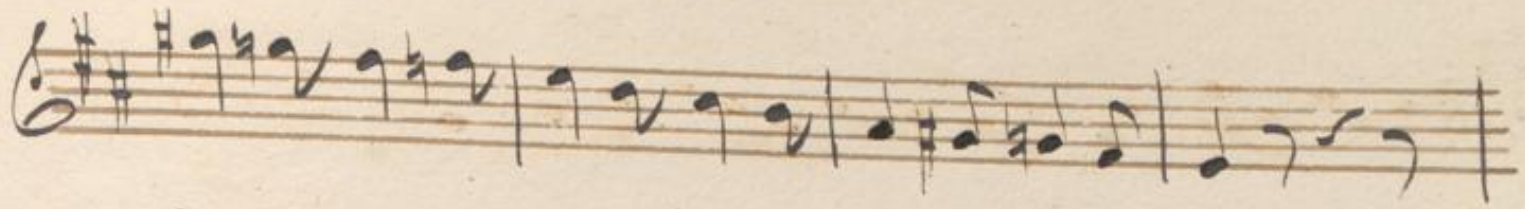
*dolce.*

*f*

*Dolce*

*trium*

*trium*



A handwritten musical score consisting of ten staves. The notation is in a single system, likely for a keyboard instrument. The first staff begins with a treble clef and a key signature of one sharp (F#). The music is written in a style characteristic of the 18th or 19th century, featuring a mix of eighth and sixteenth notes, often beamed together. There are several slurs and phrasing marks throughout the piece. A handwritten annotation  $\frac{p}{o}/\frac{p}{o}$  is written above the first staff. Another annotation  $\frac{p}{o}$  is written below the eighth staff. The paper shows signs of age, including some staining and wear at the edges.



V. S.

A handwritten musical score consisting of ten staves. The notation includes treble clefs, a key signature of one sharp (F#), and a common time signature (C). The music features a variety of rhythmic values, including eighth and sixteenth notes, and rests. Dynamic markings are present throughout: *ff* (fortissimo) appears at the beginning of the first staff and in the middle of the eighth staff; *p* (piano) is marked in the second staff; *f* (forte) is marked in the third staff; and *ff* appears again at the end of the tenth staff. The handwriting is in dark ink on aged, slightly yellowed paper.

Handwritten musical score on eight staves. The notation includes various note values, rests, and dynamic markings such as 'f' and 'tinnnnnnnnnn'. The score concludes with a double bar line and a large 'F.' marking.

Two sets of empty musical staves at the bottom of the page.



A handwritten musical score on eight staves. The first staff begins with a treble clef and a key signature of two sharps (F# and C#). The notation includes various note values, rests, and slurs. The second staff continues the melody. The third and fourth staves feature a rhythmic accompaniment with repeated eighth-note patterns. The fifth and sixth staves return to a melodic line with slurs. The seventh staff concludes with a double bar line and a final flourish. The eighth staff is mostly empty, with only a few notes and a final flourish at the beginning.

Four empty musical staves, each consisting of five horizontal lines, arranged vertically below the main score.