

# **Badische Landesbibliothek Karlsruhe**

**Digitale Sammlung der Badischen Landesbibliothek Karlsruhe**

**Iphigénie en Aulide. Excerpts - Don Mus.Ms.S.B.3 Nr.20**

**Gluck, Christoph Willibald**

**[S.l.], 1830 (1830c)**

Violine II

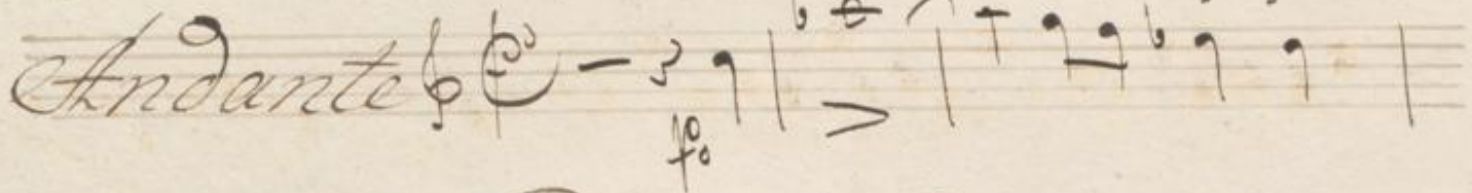
[urn:nbn:de:bsz:31-128020](https://nbn-resolving.org/urn:nbn:de:bsz:31-128020)

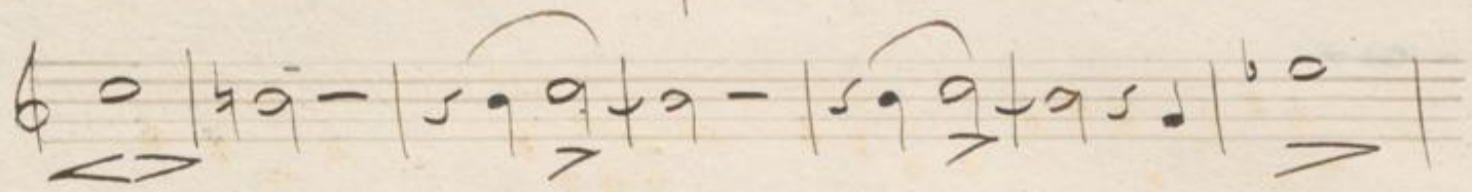
No. 20.

Suverture  
par  
Gluck  
Violino Secondo

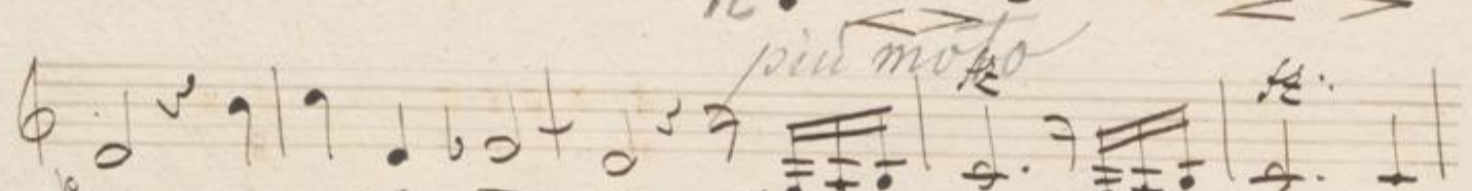


*Overture. Violino Secondo*

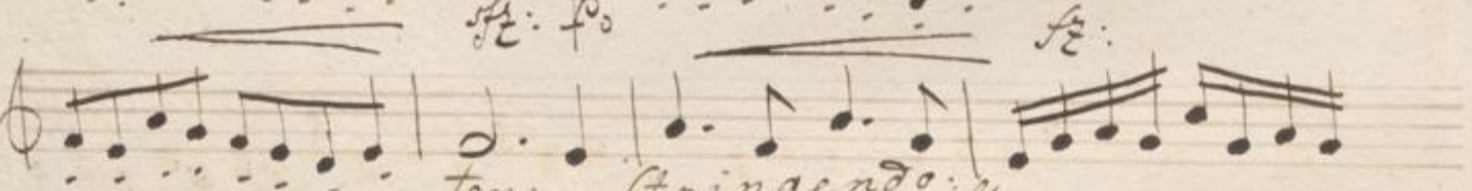
*Andante* 

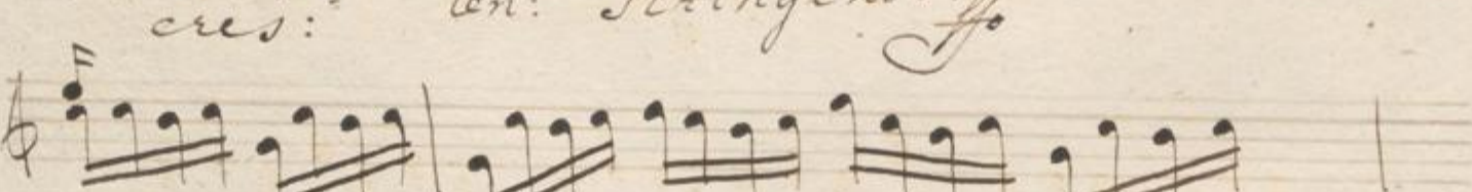


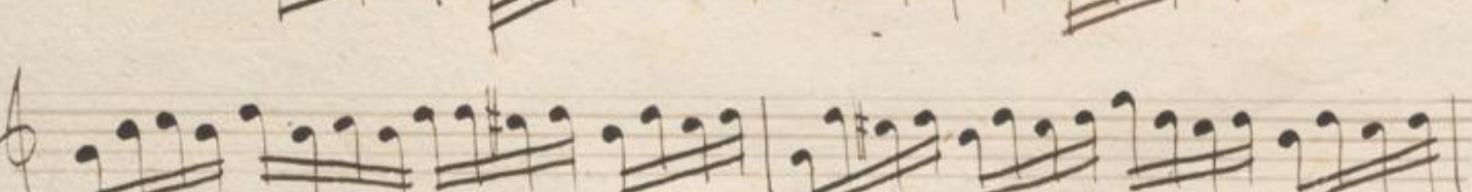




*piu moto* 

*sfz: f* 

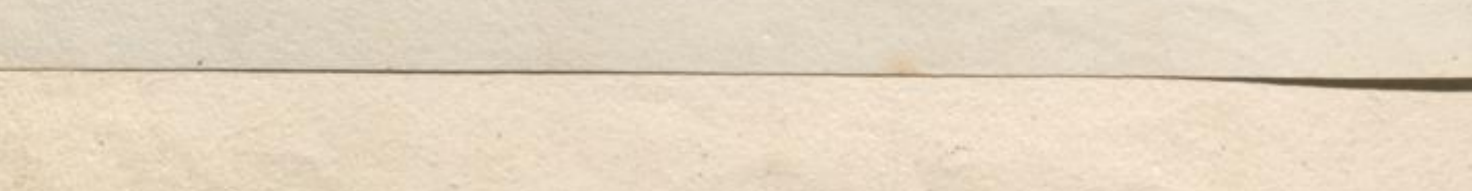
*cres: ten: Stringendo f* 

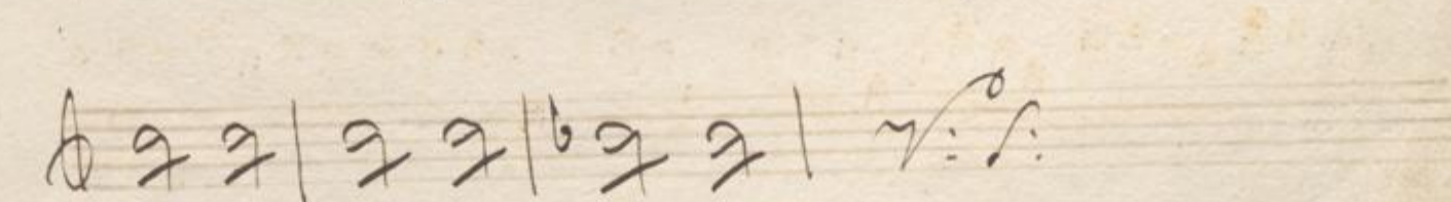
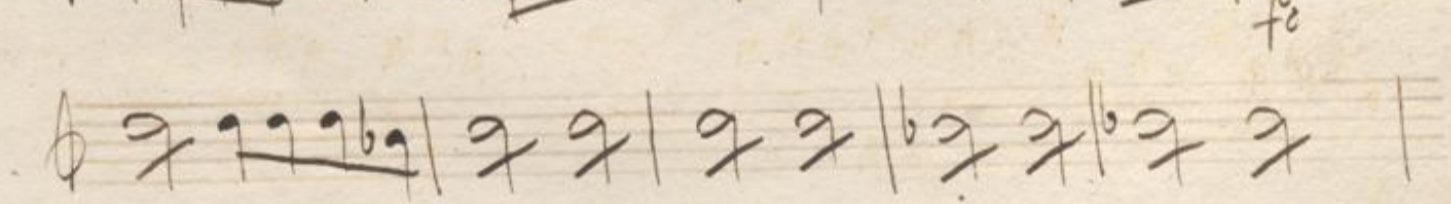
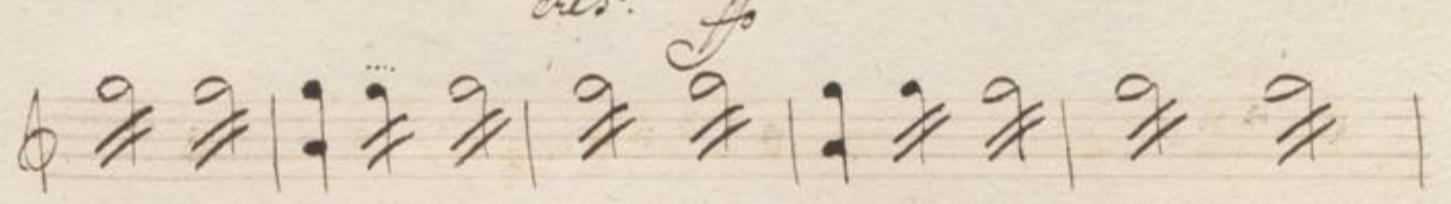
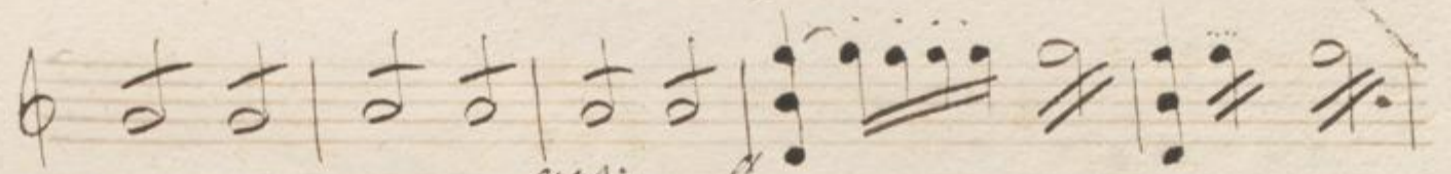
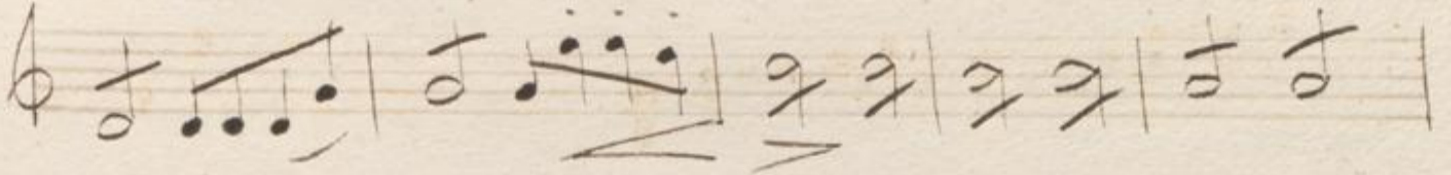
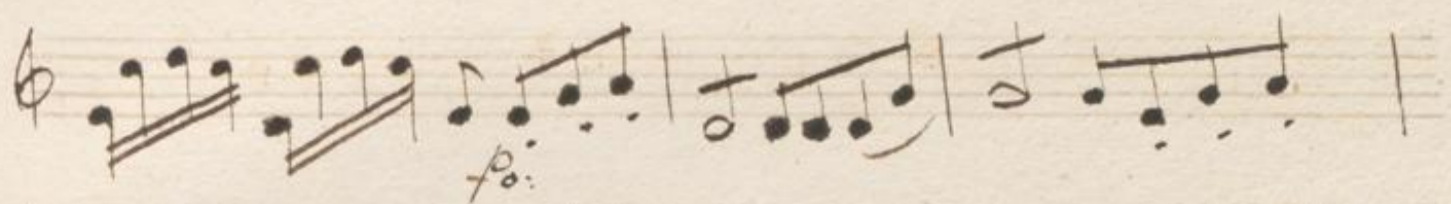












A handwritten musical score on ten staves. The notation includes treble clefs, a key signature of one sharp (F#), and a common time signature (C). The music features a variety of rhythmic values, including eighth and sixteenth notes, and rests. Dynamic markings such as *f* and *ff* are present. The score is written in a cursive, historical style with some ink bleed-through from the reverse side of the page.

Handwritten musical score on ten staves. The notation includes various note values, rests, and dynamic markings such as "cres.", "f", and "bis". The music is written in a single system across the staves.

A single staff of handwritten musical notation at the bottom of the page, continuing the piece.

A handwritten musical score on ten staves. The notation includes various rhythmic values, accidentals, and dynamic markings. The first staff begins with a treble clef and a 3/4 time signature. The second staff has the marking "cres. f". The third staff has a key signature change to one sharp (F#). The fourth staff has a key signature change to two sharps (F# and C#). The fifth staff has a key signature change to one sharp (F#) and a dynamic marking "f". The sixth staff has a key signature change to one flat (Bb). The seventh staff has a key signature change to two flats (Bb and Eb). The eighth staff has a key signature change to one flat (Bb). The ninth and tenth staves continue the melodic and harmonic development.

Handwritten musical score on page 137. The page contains ten staves of music. The notation includes various note values, rests, and dynamic markings. The first staff begins with a treble clef and a key signature of one flat. The second staff has a forte (*f*) marking and accents. The third staff includes *ten.* markings. The fourth and fifth staves have *vo.* markings. The sixth staff is marked *Stringendo*. The final staff concludes with a forte (*f*) marking and a double bar line.

A single line of handwritten musical notation at the bottom of the page, partially cut off. It continues the musical piece with notes and rests.



A handwritten musical score consisting of ten staves. The notation is in a single system, likely for a keyboard instrument. The first staff begins with a treble clef and a key signature of one sharp (F#). The music is written in a style characteristic of the 18th or 19th century, featuring a variety of note values, rests, and dynamic markings such as *f* and *ff*. The score includes several measures with complex rhythmic patterns and some slurs. The paper shows signs of age, including some staining and wear at the edges.

Nro. 20.

Overture

par

Gluck

Violino Secondo 2.

Overture Violino Secondo

Andante  $\text{C}$   $f_0$

Musical notation (Staff 2)

Musical notation (Staff 3)

Musical notation (Staff 4)

Musical notation (Staff 5)

Musical notation (Staff 6) *ten* Stringendo.  $f_0$

Musical notation (Staff 7)

Musical notation (Staff 8)

Musical notation (Staff 9)

Musical notation (Staff 10)

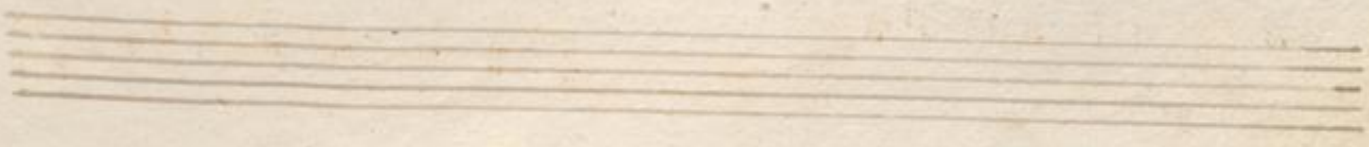
Handwritten musical score on ten staves. The notation includes various rhythmic values, accidentals, and dynamic markings such as *f*, *p*, and *cres:*. A red *Lied* is written in the eighth staff. The piece concludes with a double bar line and repeat signs.

A handwritten musical score consisting of ten staves. The notation is in a single system, likely for a piano or similar instrument. The music features a variety of rhythmic patterns, including eighth and sixteenth notes, and rests. There are several dynamic markings: *f* (forte) appears on the third, fifth, and eighth staves; *res.* (ritardando) is written below the first measure of the tenth staff; and *fo* (forzando) is written below the sixth measure of the eighth staff. The paper shows signs of age, with some staining and a slightly irregular edge at the bottom.

Handwritten musical score on ten staves. The first staff contains rhythmic patterns with two *f.* markings. The second through eighth staves feature dense, flowing melodic lines with numerous slurs. The ninth staff begins with a *f.* marking. The tenth staff concludes with the notation *v.s.* and *mus:*. Below the tenth staff are three empty staves.

A handwritten musical score on 11 staves. The notation includes various rhythmic values such as eighth and sixteenth notes, often beamed together. Dynamics are marked with 'f' (forte) and 'p' (piano). A 'f0' marking appears on the third staff. The score includes performance instructions: 'ten.' (ritardando) and 'Tempo' (tempo marking) written in red ink. The manuscript shows signs of age, with some staining and wear at the bottom edge.

Handwritten musical score on ten staves. The first staff has a treble clef and a key signature of one sharp (F#). The second staff is marked "Stringendo." in red. The third through eighth staves contain dense, rapid sixteenth-note passages. The ninth staff has a "ff" dynamic marking and some red markings. The tenth staff has a "V." marking.





This page contains a handwritten musical score consisting of ten staves. The notation is in a historical style, likely from the 18th or 19th century. The first staff begins with a treble clef and a key signature of one sharp (F#). A dynamic marking of *fmo* is present below the first few notes. The second staff continues the melody and includes a bass clef with a key signature of one sharp. The third staff features a treble clef and contains several measures with notes that are heavily crossed out with diagonal lines, suggesting a correction or deletion. The fourth staff has a treble clef and a key signature of one sharp, with dynamic markings of *fz.* and *fz.* below it. The fifth staff continues the melodic line. The sixth staff has a treble clef and a key signature of one sharp. The seventh staff has a treble clef and a key signature of one sharp. The eighth staff has a treble clef and a key signature of one sharp. The ninth staff has a treble clef and a key signature of one sharp. The tenth staff is mostly empty, with a few notes and a large, stylized flourish or signature at the end.