

# **Badische Landesbibliothek Karlsruhe**

**Digitale Sammlung der Badischen Landesbibliothek Karlsruhe**

**Die in Lieb' und Treu' bestehende Dankbarkeit - Mus. Hs.  
907**

**Sigl, Franz A. M.**

**[S.l.], 1761**

Violine I

**urn:nbn:de:bsz:31-25430**

Symphonia

allegro All. Gloria Violino Primo

Recitativo a||| Tacet

Symphonia volti Seg

*Allegro.*  
*Symphonia*

*Finis*

*Da capo al segno. Finis*

Detailed description: This section of the manuscript contains the first part of a symphony. It begins with a tempo marking of 'Allegro.' and is titled 'Symphonia'. The score is written on ten staves. The first staff is a treble clef with a key signature of one sharp (F#). The music consists of various rhythmic patterns, including eighth and sixteenth notes, and rests. Dynamic markings such as 'p' (piano) and 'f' (forte) are used throughout. The section concludes with a double bar line and the word 'Finis' written above the staff. Below this, there is a 'Da capo al segno' instruction, followed by another 'Finis' marking.

*Recitativo* | 29 | *Facet*

*Aria*

*pia.* *for.* *pia.* *forte*

*pia.* *for.* *piano*

Detailed description: This section is an aria, starting with a treble clef and a key signature of one sharp. The title 'Aria' is written in a large, decorative font at the beginning. The score spans seven staves. It features a variety of rhythmic values and rests. Dynamic markings are prominent, including 'p' (piano), 'f' (forte), and 'piano' (written in lowercase). The music shows some melodic ornamentation and phrasing. The section ends with a double bar line.

*forte*

*fine* *pia:* *da capo*

*Recitativo Tacet* *Arias* *Da Capo* *af. quod* *93*

*pia:* *for. b*

*piano*

*forte* *fine* *da capo*

*Recitativo* *Duetto* *Cello tacet* *pausa* *94*

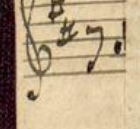
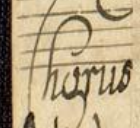
*Recitativo* *à 5. pausa tacet* *95*



A page of handwritten musical notation on aged, yellowed paper. The score consists of ten staves of music, written in a cursive hand. The notation includes various rhythmic values, accidentals, and dynamic markings. The first staff begins with a treble clef and a key signature of one sharp (F#). The music is dense and complex, featuring many beamed notes and slurs. Dynamic markings such as *for.*, *pia.*, *for.*, *pia.*, *for.*, *f*, *fine*, *piano*, and *rit.* are scattered throughout the score. The paper shows signs of age, including some staining and faint, illegible markings in the background.

*Da capo al segno fine*

Aria



*[Faint, mirrored handwritten musical notation and text bleed-through from the reverse side of the page, including the word 'Chorus' and 'Aria' visible in reverse.]*