

Badische Landesbibliothek Karlsruhe

Digitale Sammlung der Badischen Landesbibliothek Karlsruhe

Masses - Mus. Hs. 920

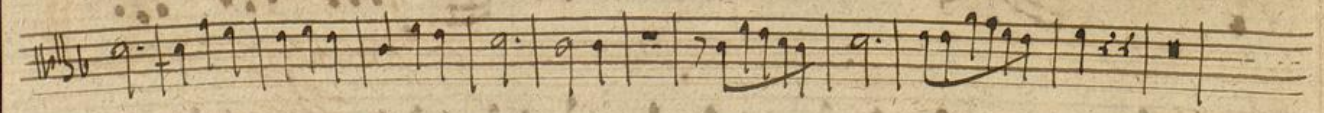
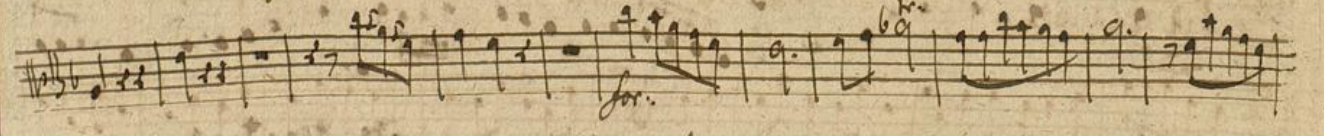
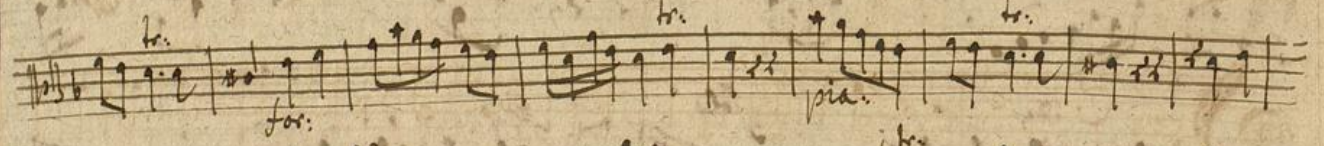
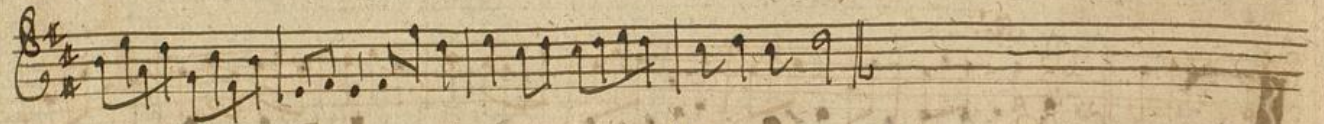
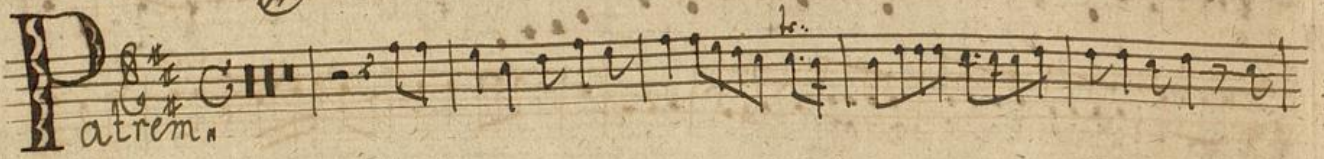
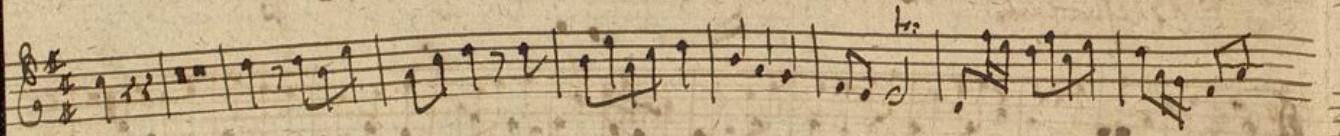
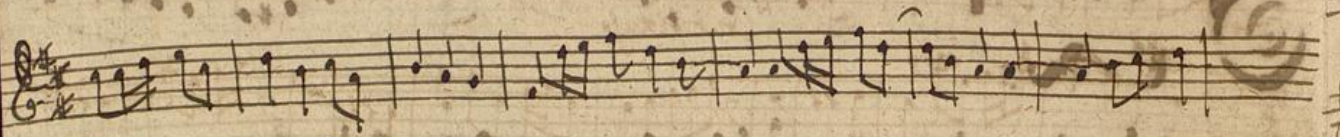
Stumpff, Carl

[S.l.], 1750

Violine I

urn:nbn:de:bsz:31-25552

#a



Vaetj
1713

for. *Crucifixus*

alleg. *Resurrexit*

ada. *Et vitam*

tarde

alleg. *Et vitam*

Sanctus

alleg.

Volte

G *sanna*
 Musical notation on a single staff with a treble clef, key signature of one sharp (F#), and a common time signature (C). The music begins with a large, decorative initial 'G'.

Musical notation on a single staff with a treble clef, key signature of one sharp, and a common time signature. It starts with a dynamic marking of *tr.*

Musical notation on a single staff with a treble clef, key signature of one sharp, and a common time signature.

Musical notation on a single staff with a treble clef, key signature of one sharp, and a common time signature. It begins with a dynamic marking of *p*.

B *enedictus*
 Musical notation on a single staff with a treble clef, key signature of one sharp, and a common time signature. It starts with a large, decorative initial 'B'.

Musical notation on a single staff with a treble clef, key signature of one sharp, and a common time signature. It includes dynamic markings of *tr.* and *pi.*

Musical notation on a single staff with a treble clef, key signature of one sharp, and a common time signature. It includes dynamic markings of *tr.* and *pi.*

Musical notation on a single staff with a treble clef, key signature of one sharp, and a common time signature. It includes dynamic markings of *tr.* and *pi.*

Musical notation on a single staff with a treble clef, key signature of one sharp, and a common time signature. It includes dynamic markings of *tr.* and *pi.* and ends with the handwritten text *Anna il supraff*.

A *gnus*
 Musical notation on a single staff with a treble clef, key signature of one sharp, and a common time signature. It starts with a large, decorative initial 'A'.

D *onata*
 Musical notation on a single staff with a treble clef, key signature of one sharp, and a common time signature. It starts with a large, decorative initial 'D'.

Musical notation on a single staff with a treble clef, key signature of one sharp, and a common time signature. It ends with a large, decorative flourish.