

Badische Landesbibliothek Karlsruhe

Digitale Sammlung der Badischen Landesbibliothek Karlsruhe

7 Sacred songs - Don Mus.Ms. 519

[S.I], 1700-1799 (18.sc)

Posuit me desolatam

[urn:nbn:de:bsz:31-113485](https://nbn-resolving.org/urn:nbn:de:bsz:31-113485)

Resp: ad Primis: et 2. vespere

Mus. An. 519

3



Posu it me De so latam Tota di e moe ro re con fectam



De so latam Gloria Patri et fi li o et Spi ri tu i San cto.



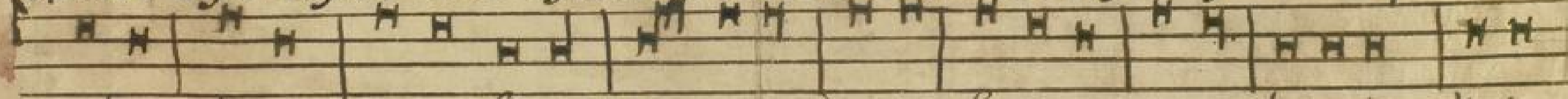
Posu it Tu am ip sū s a ni mam ai t ad Ma



ri am si me on per transi bit gla di us Magnificat 6



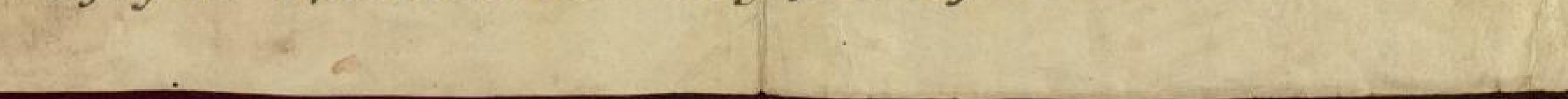
Cum vi dis set Ie sum ma rem stan tem iux ta cruce m et disci pu lum quem di li



ge bat di cit ma tri su æ Mu lier ecce fi li us tu us de in de di cit



dis ci pu lo Ec ce Ma ter tua Magnificat 8 Hymnus sta bat ma ter



JANUARIUS hat XXXI. Tag

Table for January (JANUARIUS) with columns for day, feast name, and weather forecast. Includes entries for St. Ignace, St. Basil, St. Gregory, etc.

FEBRUARIUS hat

Table for February (FEBRUARIUS) with columns for day, feast name, and weather forecast. Includes entries for St. Ignace, St. Valentine, St. Gregory, etc.

SEPTEMBER hat XXX. Tag

Table for September (SEPTEMBER) with columns for day, feast name, and weather forecast. Includes entries for St. Ignace, St. Vincent, St. Bartholomew, etc.

Table for December (DECEMBER) with columns for day, feast name, and weather forecast. Includes entries for St. Stephen, St. John the Evangelist, St. Thomas, etc.

Table for Julius (JULIUS) with columns for day, feast name, and weather forecast. Includes entries for St. Ignace, St. Peter, St. Paul, etc.

Sulci te me floribus stipate me malis

Quia amore langueo psal: Voce mea

Posu it me De so latam Tota

di e me ro re confedam De so

latam Gloria Patri et fil io et

ad Magnificat
in vesperis
spiri tui Sando Posu it

Tu am ipsius a nimam ait ad Mari

A series of 15 horizontal musical staves, each consisting of five parallel lines, arranged vertically on a page of aged, yellowish paper. The staves are empty, with no musical notation or clefs. There is a small dark ink smudge on the lower-left side of the page, near the bottom of the staves.

Blank manuscript paper with 20 horizontal lines.