

# **Badische Landesbibliothek Karlsruhe**

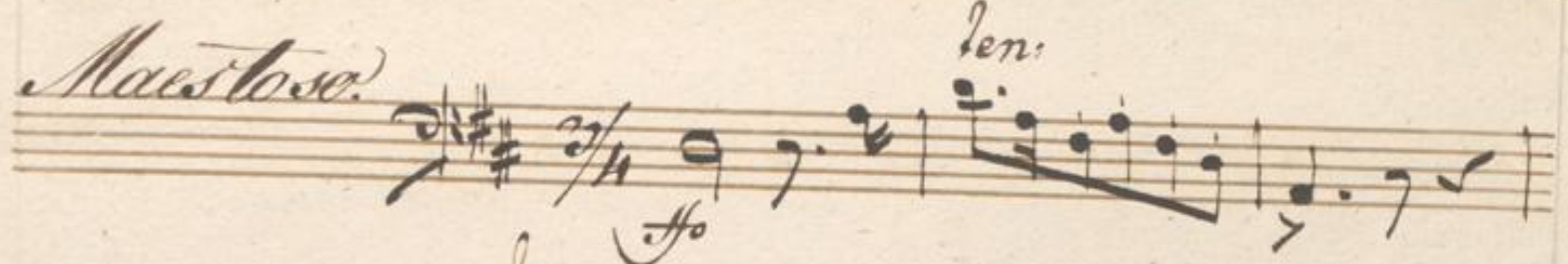
**Digitale Sammlung der Badischen Landesbibliothek Karlsruhe**

**{Ouverture - Dessauer Marsch - Friedrich Schneider}**

Posaune

No. 18. *Overture.* Trombono. *Schneider*

*Maestoso.* *len.*



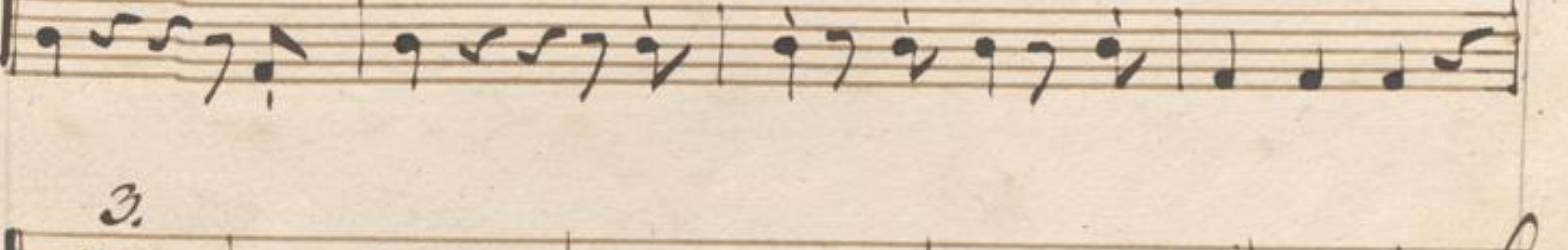
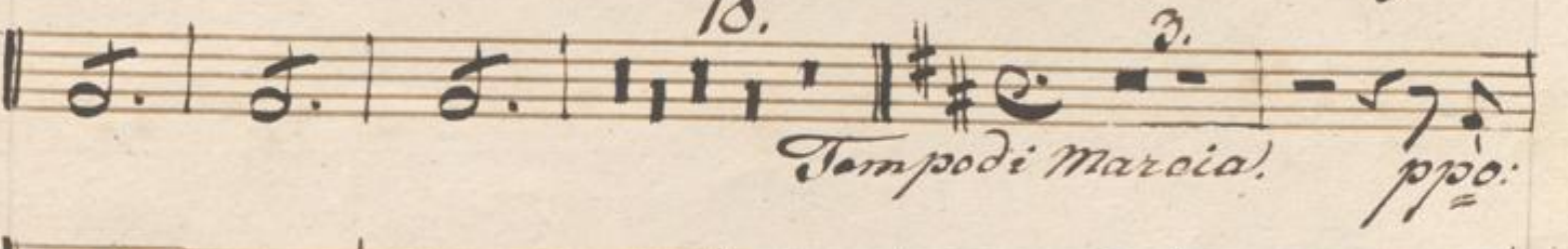
*f* *len* *f* *pp*



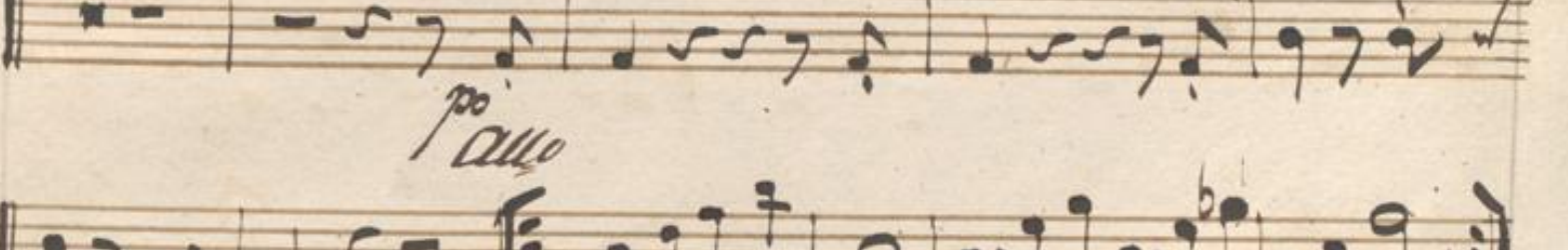
*pp* *f* *f*



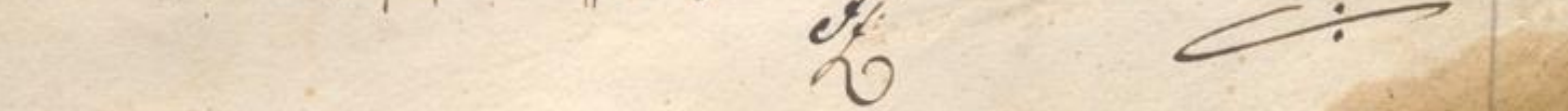
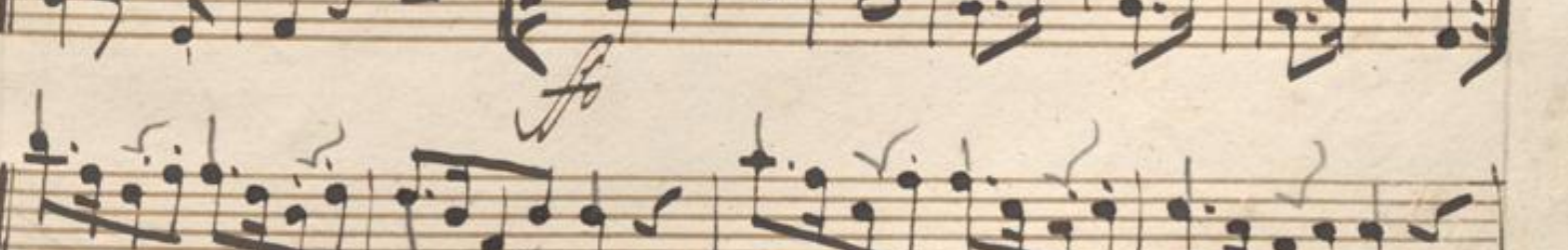
18. *Tempo di Marcia!* *ppp*



*pp* *Allegro*



*f*



Handwritten musical score on ten staves. The notation includes treble clefs, a key signature of one sharp (F#), and various rhythmic values. The score is annotated with several dynamics and markings:

- Staff 1: *f* (forte)
- Staff 2: *f* (forte)
- Staff 3: *f* (forte)
- Staff 4: *ppp* (pianissimo)
- Staff 5: *f* (forte)
- Staff 6: *ppp* (pianissimo)
- Staff 7: *ppp* (pianissimo)
- Staff 8: *ppp* (pianissimo)
- Staff 9: *ppp* (pianissimo)
- Staff 10: *f* (forte)

Other markings include a circled measure on staff 3, the number "14." above staff 4, and a large "V" at the end of staff 3.

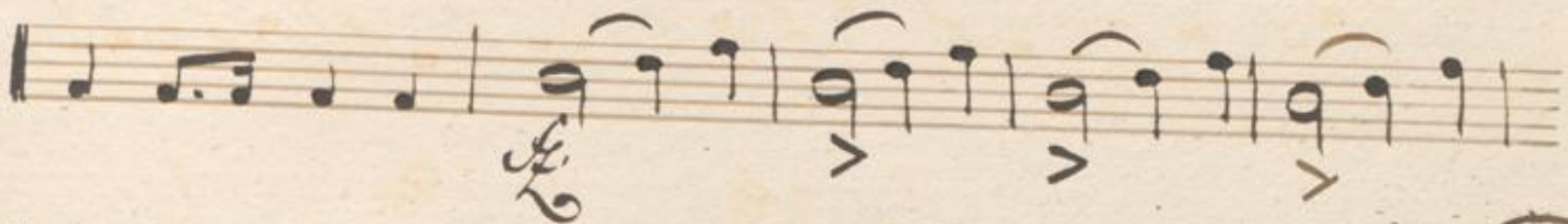
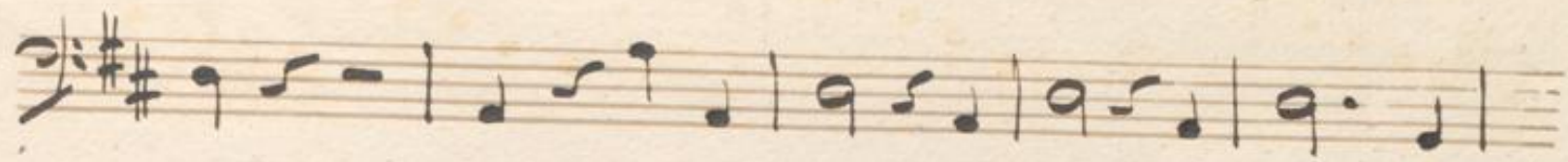
The first section of the handwritten musical score consists of ten staves. The first staff begins with a treble clef, a key signature of two sharps (F# and C#), and a common time signature (C). The music is written in a fluid, cursive style. The first staff ends with a double bar line and a key signature change to one sharp (F#). The second staff continues in this key. The third staff has a common time signature. The fourth staff begins with a second ending bracket labeled '2.' and ends with a measure labeled '19.'. The fifth staff starts with a forte dynamic marking 'f'. The sixth staff ends with a fortissimo dynamic marking 'ff'. The seventh and eighth staves continue the melodic line. The ninth and tenth staves conclude the section with various rhythmic patterns and accidentals.

*Tempo 8<sup>mo</sup> Marcia 3.*

The second section, titled 'Tempo 8<sup>mo</sup> Marcia 3.', consists of two staves. The first staff begins with a common time signature (C) and a key signature of one sharp (F#). It features a series of rhythmic patterns characteristic of a march. The second staff continues the piece, starting with a forte dynamic marking 'f' and ending with a double bar line and a measure labeled '8.'. The notation is clear and rhythmic.

*Allegro.*

Handwritten musical score on ten staves. The notation includes various note values, rests, and dynamic markings such as 'f' and 'p'. The score is written in a historical style with some ink bleed-through from the reverse side.



A series of 12 empty musical staves, each consisting of five horizontal lines, arranged vertically on a single page of aged, yellowish paper. The paper shows signs of wear, including a small tear on the left edge and a brownish stain at the bottom left corner.

UVERTURE  
Op. 1  
Beethoven

A partial view of musical notation on the right page, showing the beginning of a piece. It includes a treble clef, a key signature of two sharps (F# and C#), and a dynamic marking of 'f' (forte). The notation consists of several measures of music with notes and rests.