

# **Badische Landesbibliothek Karlsruhe**

**Digitale Sammlung der Badischen Landesbibliothek Karlsruhe**

**{Ouverture Op. 41 - Friedrich Ernst Fesca}**

Violine II [1. Exemplar]



No. 31.

115

Violino 2<sup>do</sup>

1.

F. K. FESCA  
OUVERTURE  
Op: 41.

Andante.

2355.

V. S.



Violino 2<sup>do</sup>

2.

The musical score for Violino 2<sup>do</sup> on page 116 consists of 14 staves of music. The key signature is G major (one sharp) and the time signature is 2/4. The score begins with a treble clef and a key signature of one sharp. The first staff starts with a treble clef and a key signature of one sharp, followed by a series of sixteenth-note runs. The second staff continues with similar rhythmic patterns, including a *cres* (crescendo) marking. The third staff features a *f* (forte) dynamic. The fourth staff has a *p* (piano) dynamic. The fifth staff includes a *dimin* (decrescendo) marking. The sixth staff has a *ff* (fortissimo) dynamic. The seventh staff has a *p* (piano) dynamic. The eighth staff has a *f* (forte) dynamic. The ninth staff has a *p* (piano) dynamic. The tenth staff has a *f* (forte) dynamic. The eleventh staff has a *p* (piano) dynamic. The twelfth staff has a *f* (forte) dynamic. The thirteenth staff has a *p* (piano) dynamic. The fourteenth staff has a *f* (forte) dynamic. The score concludes with a *f* (forte) dynamic.



Violino 2do

5.

The musical score for Violino 2do on page 127 consists of 14 staves of music. The key signature is G major (one sharp). The score includes various dynamics such as *p* (piano), *f* (forte), *ff* (fortissimo), and *dimin* (diminuendo). It also features *cresc* (crescendo) markings and first and second endings. The piece concludes with a *fine* marking.



*Violino Secondo.*

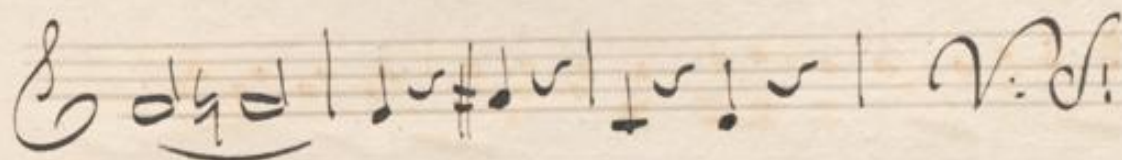
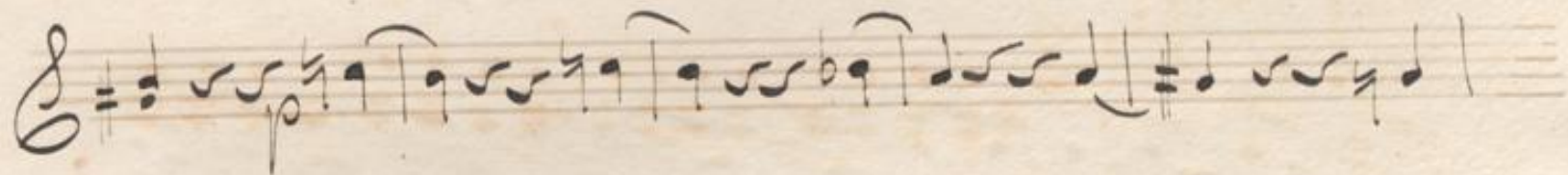
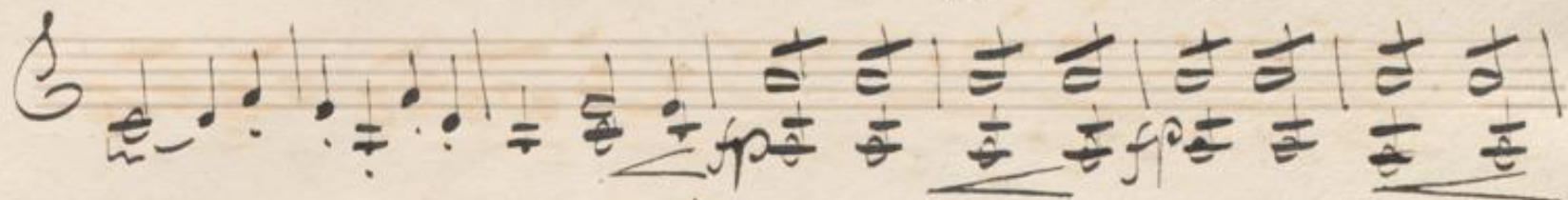
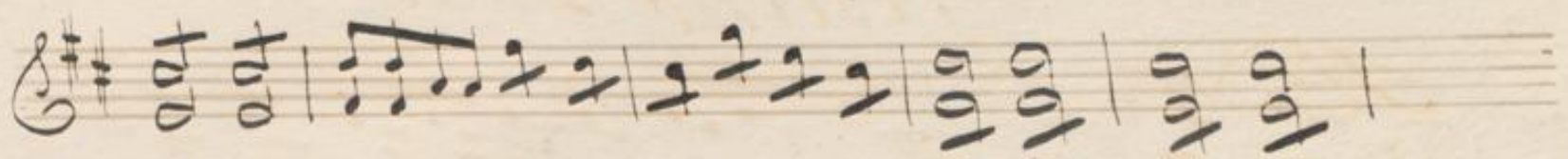


Overture Violino 2do

Andte

Allo molto  
assai



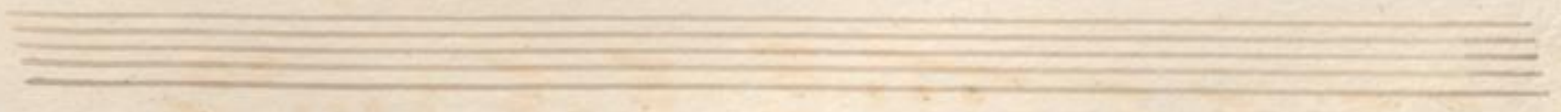
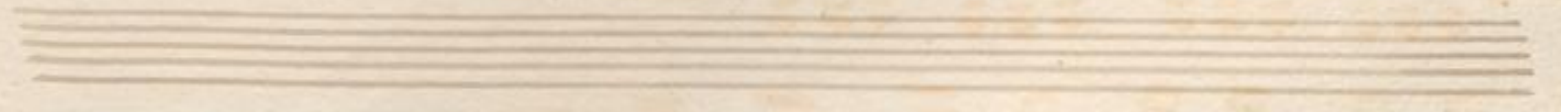




A handwritten musical score on ten staves. The notation is in a single system, likely for a single instrument or voice. The key signature is one sharp (F#), and the time signature is common time (C). The music consists of a series of rhythmic patterns, primarily quarter and eighth notes, with some rests. The notation is written in a clear, cursive hand. The paper shows signs of age, including some staining and discoloration. The score concludes with a double bar line and a fermata-like flourish.



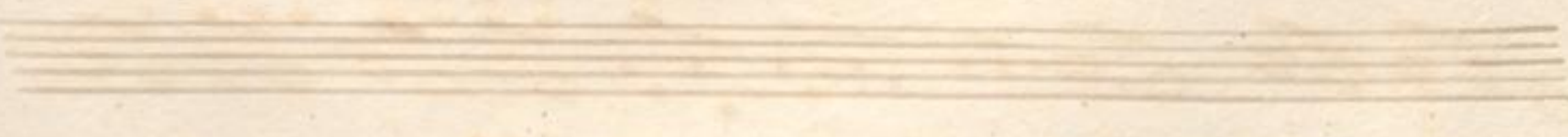
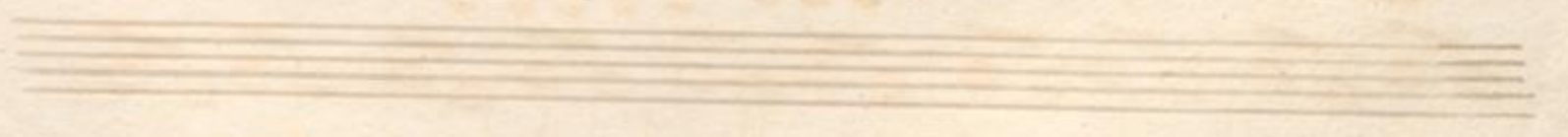
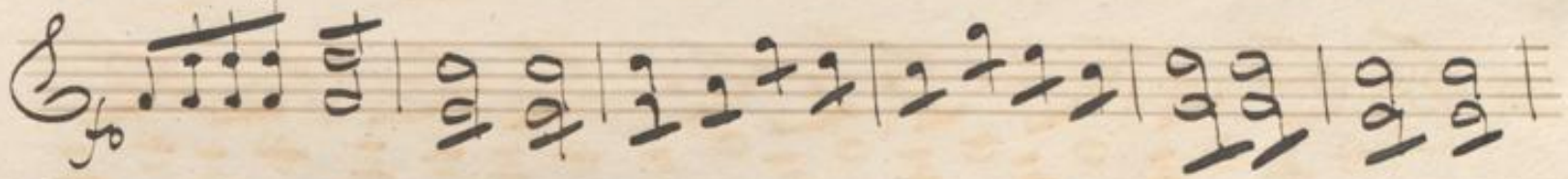
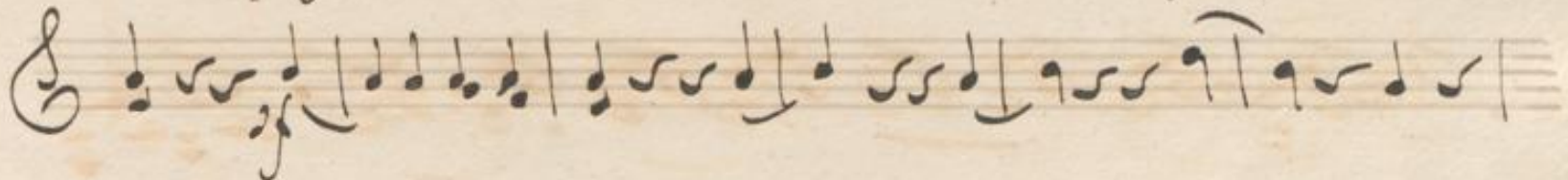
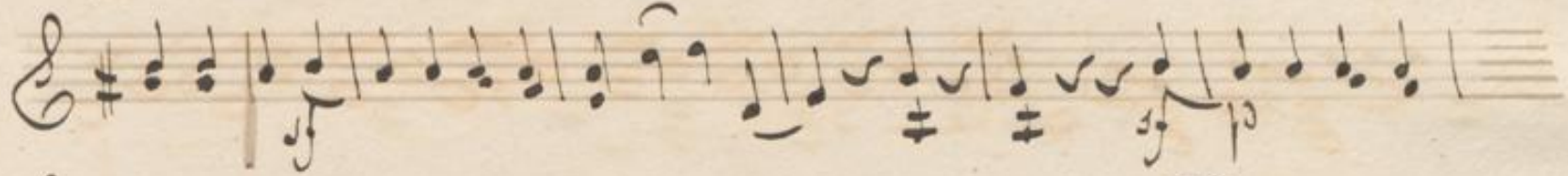
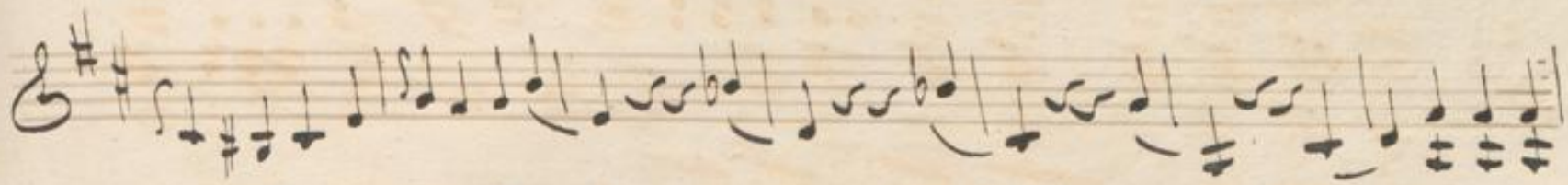
Viol





A handwritten musical score consisting of ten staves. The notation is in a historical style, likely from the 18th or 19th century. The first staff begins with a treble clef and a key signature of two sharps (F# and C#). The music is written in a single system, with various note values, rests, and dynamic markings such as 'p' (piano) and 'f' (forte). The notation includes many beamed notes and slurs, indicating complex rhythmic patterns. The paper shows signs of age, with some staining and wear at the edges.







A handwritten musical score on ten staves. The notation is in a historical style, likely from the 18th or 19th century. The first staff begins with a treble clef, a key signature of one sharp (F#), and a common time signature (C). The music consists of various note values, including minims, crotchets, and quavers, often beamed together. There are several dynamic markings, such as 'p' (piano) and 'f' (forte), and some slurs. The paper shows signs of age, with some staining and wear at the edges.



V. S.



A handwritten musical score on ten staves. The notation is in a single system, likely for a single instrument. The key signature has two sharps (F# and C#). The score includes various musical notations such as notes, rests, and slurs. Dynamics markings include *mes*, *ff*, *sf*, and *fo*. The piece concludes with a double bar line and a repeat sign.



Violino 2do

5.

The musical score for Violino 2do on page 127 consists of 14 staves of music. The key signature is G major (one sharp). The score includes various dynamics such as *p* (piano), *f* (forte), *ff* (fortissimo), and *dimin* (diminuendo). It also features performance instructions like *tr* (trill), *cres* (crescendo), and *1 ff sempre*. The piece concludes with a *fine* marking.



