

Badische Landesbibliothek Karlsruhe

Digitale Sammlung der Badischen Landesbibliothek Karlsruhe

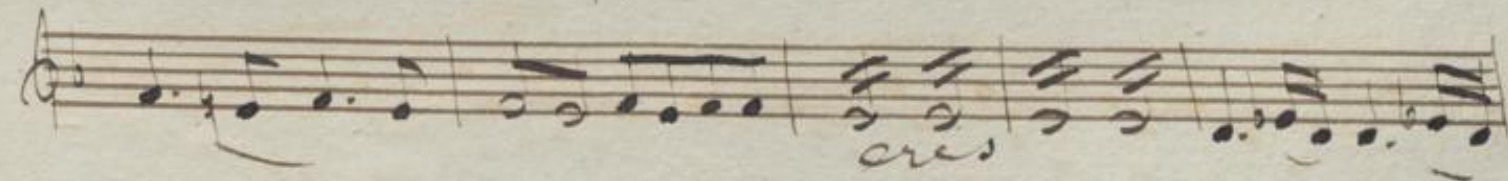
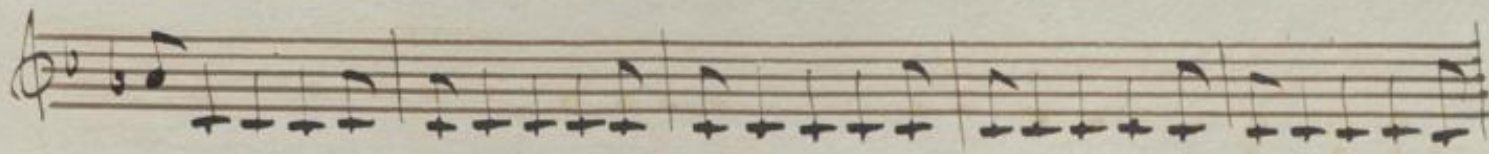
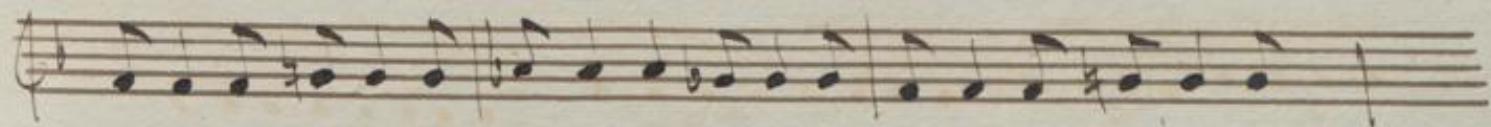
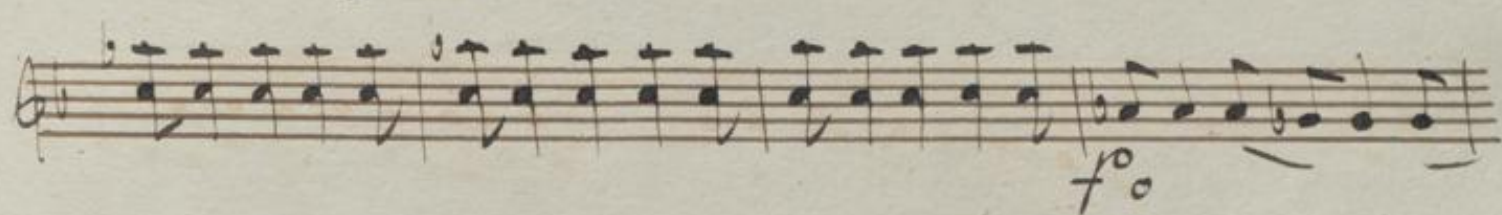
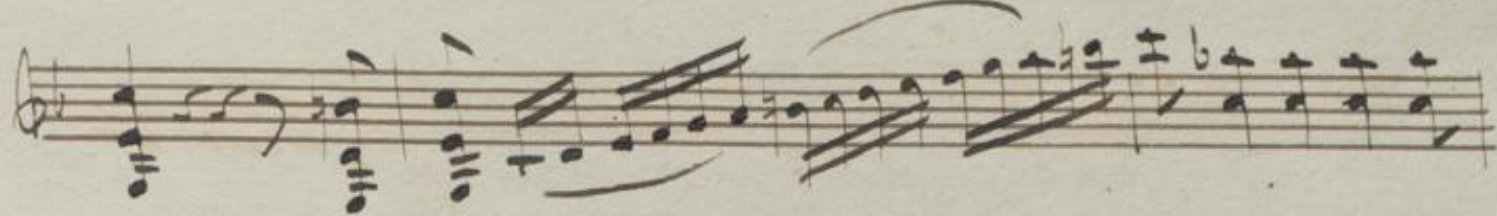
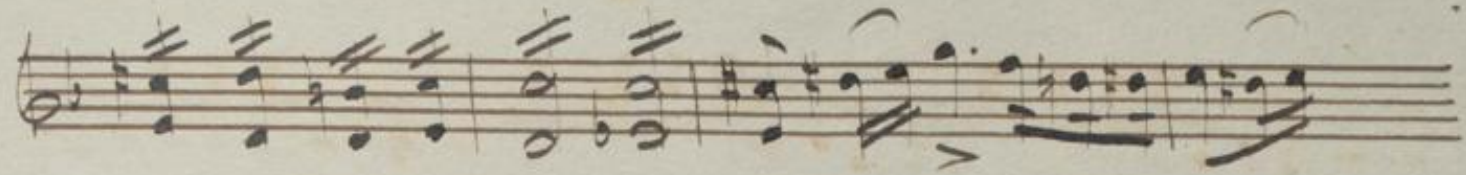
{Oper - Die Pflegekinder - Peter Josef von Lindpaintner}

Ouverture

pizz.

Alto

A handwritten musical score on ten staves. The notation includes treble clefs, various note values (quarter, eighth, sixteenth notes), rests, and dynamic markings such as *f*, *ff*, *pp*, and *sfz*. There are also some markings that look like *Al.* and *ffz*. The paper shows signs of age, including some staining and wear at the edges.



A page of handwritten musical notation on ten staves. The notation is in a single system, likely for a piano. The first staff begins with a treble clef and a key signature of one flat. The music features various rhythmic patterns, including eighth and sixteenth notes, and rests. Handwritten annotations in red ink include "ritardando" under the first staff and "f° atemp°" under the second staff. A small "i." is written above the second staff. The notation includes slurs, ties, and dynamic markings such as "f°". The paper shows signs of age, including some staining and wear at the edges.

A handwritten musical score consisting of ten staves. The notation is in a single system, likely for a piano or similar instrument. The first staff begins with a treble clef and a key signature of one flat (B-flat). The music features a variety of rhythmic values, including eighth and sixteenth notes, and rests. There are several dynamic markings, such as *f* (forte) and *ff* (fortissimo), and some slurs. The second staff contains a complex passage with many beamed notes. The third staff has a *f* marking. The fourth staff has *ff* markings. The fifth staff has *f* and *ff* markings. The sixth staff has a *f* marking. The seventh staff has a *f* marking. The eighth staff has a *f* marking. The ninth staff has a *f* marking. The tenth staff ends with a double bar line and a key signature change to two flats (B-flat and E-flat).

A handwritten musical score on ten staves. The notation is in a single system, likely for a keyboard instrument. The first staff begins with a treble clef and a stylized 'S' or 'C' symbol. The music consists of a series of chords and melodic lines, with some slurs and dynamic markings. The second staff has a 'fz' marking. The third staff has two 'fz' markings. The fourth staff has a '2' marking. The fifth staff has a '2' marking. The sixth staff has a '2' marking. The seventh staff has a '2' marking. The eighth staff has a '2' marking. The ninth staff has a '2' marking. The tenth staff has a '2' marking. The score ends with a double bar line and a fermata.