

# **Badische Landesbibliothek Karlsruhe**

**Digitale Sammlung der Badischen Landesbibliothek Karlsruhe**

**{Wilhelm Tell - Oper - Gioachino Rossini}**

Kontrabass

No. 6.

143

39

GUILLAUME TELL  
Ouverture à grand Orchestre.

CONTRE - BASSE .

1

Andante .

Violoncelle.

8 C: Basso. 1

1 pizz:

6 arco.

19 V<sup>oa</sup>

C: B: pizz:

arco cres:

rinf:

1. 24 1 2 4 41 43 24

3

1

1

*Handwritten signature or initials in brown ink.*

2

CONTRE- BASSE.

Musical score for Contrabass (Contre-Basse) in G major, 2/4 time. The score consists of 16 measures. It begins with a *pizz.* (pizzicato) instruction. The first measure is marked with a *pp* dynamic. The second measure is marked *arco.* (arco). Measures 3-5 are marked *pizz.* with first, second, and third endings. Measure 6 is marked *pp*. Measures 7-9 are marked *pizz.* with first and second endings. Measure 10 is marked *And.<sup>no</sup>* and *sempre pizz.* (sempre pizzicato). Measures 11-15 are marked *pizz.* with first and second endings. Measure 16 is marked *All.<sup>o</sup> vivace.* and *arco.* with a *pp* dynamic. The score continues with several measures of sixteenth-note patterns, some marked *f* (forte) and *sf.* (sforzando). The final measure is marked *pizz.* and *pp*.

C. Basse.

*pp* arco.

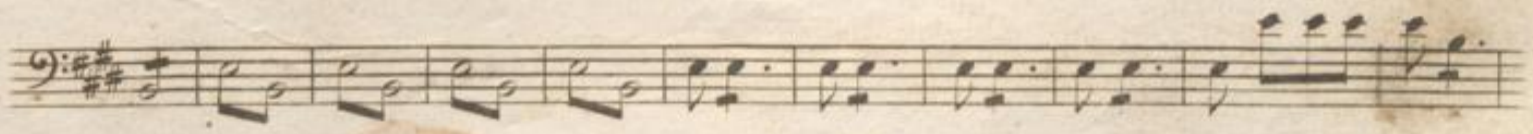
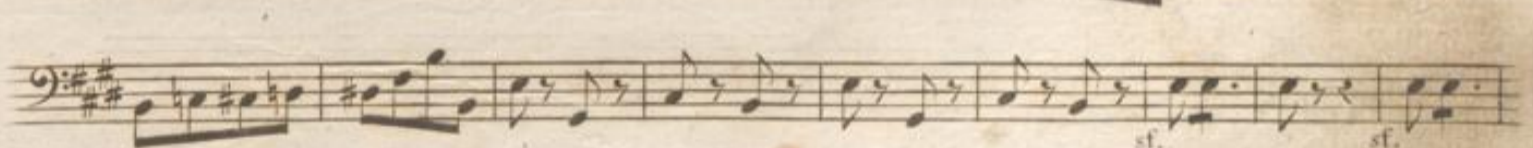
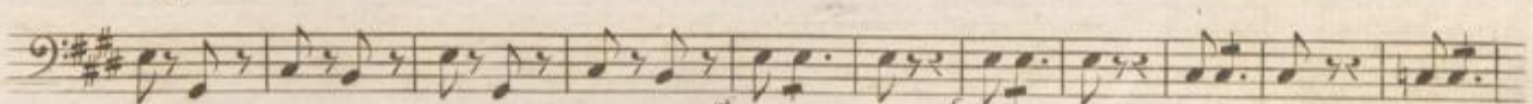
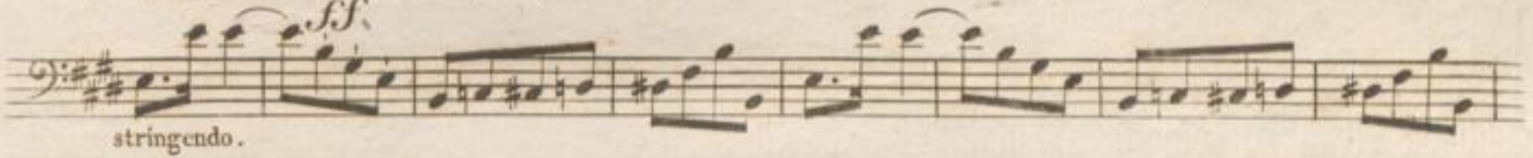
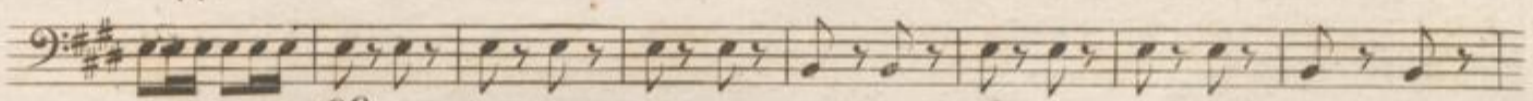
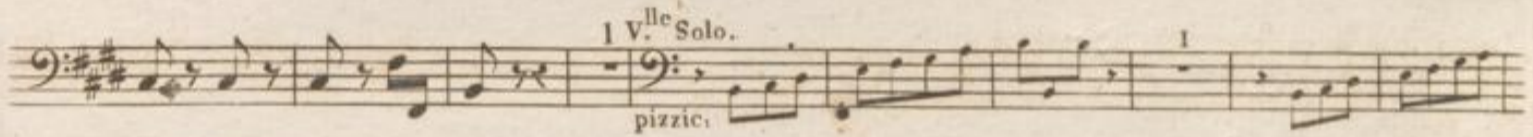
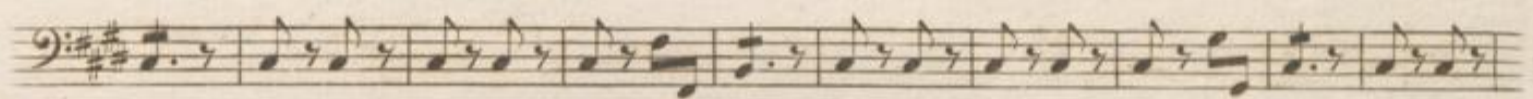
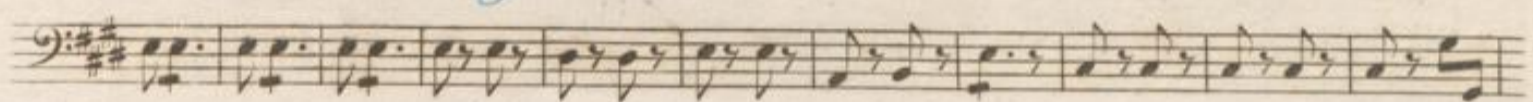
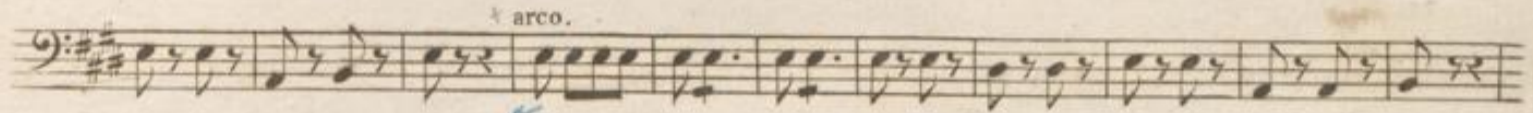
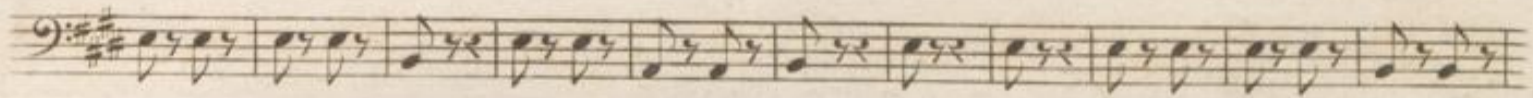
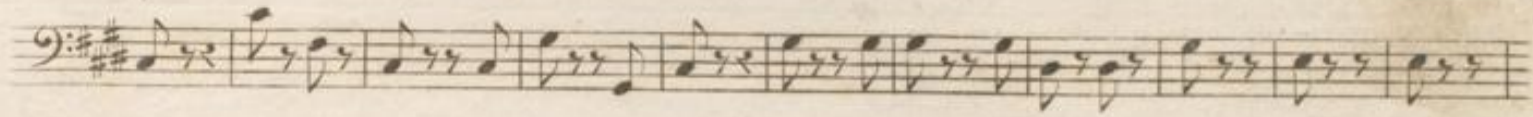
1 V.<sup>le</sup> Solo.

*pp* pizz.

*Handwritten signature or initials in brown ink.*

CONTRE - BASSE.

3



*[Faint, illegible text, likely bleed-through from the reverse side of the page]*