

Badische Landesbibliothek Karlsruhe

Digitale Sammlung der Badischen Landesbibliothek Karlsruhe

La Muette de Portici. Excerpts - Don Mus.Ms.S.B.6 Nr.11

Auber, Daniel-François-Esprit

[S.l.], 1830 (1830c)

Bass

[urn:nbn:de:bsz:31-128150](https://nbn-resolving.org/urn:nbn:de:bsz:31-128150)

No. II.

Ouverture

Basso.

Ouverture

Basso

Allegro

Assai

Andante

Allo.

dimin *cresc.*

2.

3.

7.

4.

4.

piu.

piu.

f. arco.

f. arco.

f. arco.

f. arco.

f. arco.

J. S.

A handwritten musical score on ten staves. The notation includes various note values (quarter, eighth, and sixteenth notes), rests, and dynamic markings such as *ff* and *pp*. The score is written in a historical style, possibly from the 18th or 19th century. The first staff begins with a treble clef and a key signature of one sharp (F#). The music features a mix of melodic lines and rhythmic patterns, with some staves containing repeated rhythmic figures. There are also some slurs and accents used for phrasing.

A handwritten musical score on ten staves. The notation includes various note values (quarter, eighth, and sixteenth notes), rests, and dynamic markings such as *f* (forte) and *pp* (pianissimo). The score is written in a historical style with a treble clef and a key signature of one sharp (F#). The music is organized into measures by vertical bar lines. The final staff concludes with a double bar line and a fermata-like flourish.

Handwritten musical score on page 78, featuring multiple staves with notes, rests, and dynamic markings such as *piz*, *arco*, *f*, and *p*. The score includes a first ending marked "2." and various articulation marks like accents and slurs. The notation is in a historical style, likely from the 18th or 19th century.

Handwritten musical notation on a five-line staff, featuring rhythmic patterns and bar lines.

Handwritten musical notation on a five-line staff, featuring rhythmic patterns and bar lines.

Handwritten musical notation on a five-line staff, featuring rhythmic patterns and bar lines. Includes dynamic markings *f* and *pe*.

Handwritten musical notation on a five-line staff, featuring rhythmic patterns and bar lines.

Handwritten musical notation on a five-line staff, featuring rhythmic patterns and bar lines.

Handwritten musical notation on a five-line staff, featuring rhythmic patterns and bar lines.

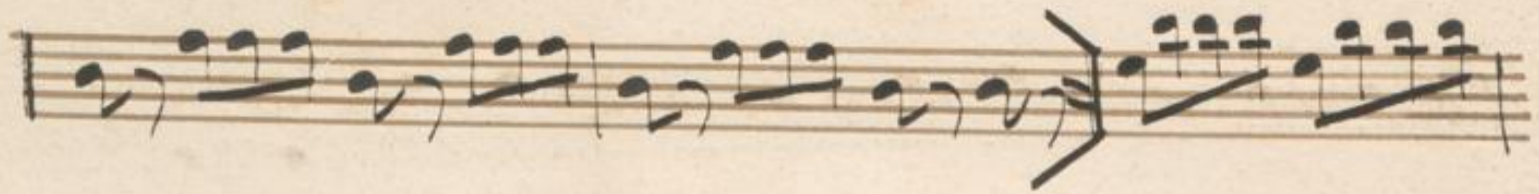
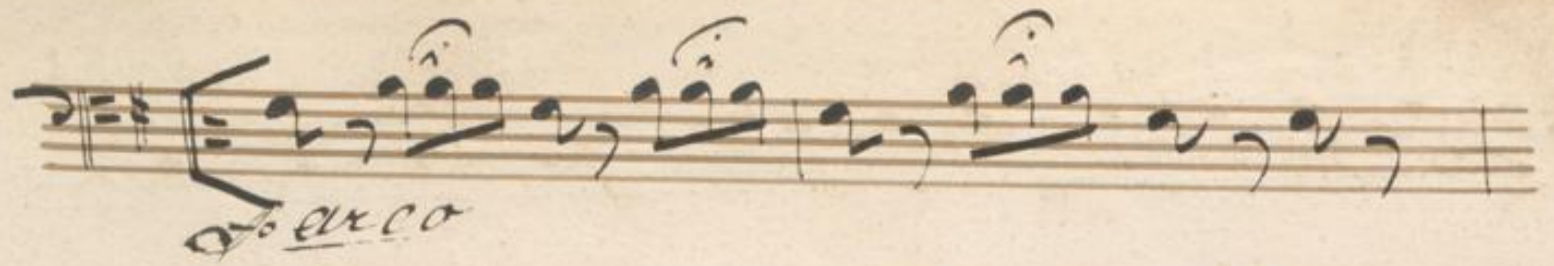
fizz:

Handwritten musical notation on a five-line staff, featuring rhythmic patterns and bar lines.

Handwritten musical notation on a five-line staff, featuring rhythmic patterns and bar lines.

Handwritten musical notation on a five-line staff, featuring rhythmic patterns and bar lines.

Empty five-line musical staff.



plus anime

