

Badische Landesbibliothek Karlsruhe

Digitale Sammlung der Badischen Landesbibliothek Karlsruhe

{Wilhelm Tell - Oper - Gioachino Rossini}

Ouverture

2 GUILLAUME TELL.
Ouverture à grand Orchestre.

2^d VIGIGN.

Andante.

40

Violonc.¹ Soli.

All.^o V.^o 2^o.

pp

sotto voce.

sotto voce.

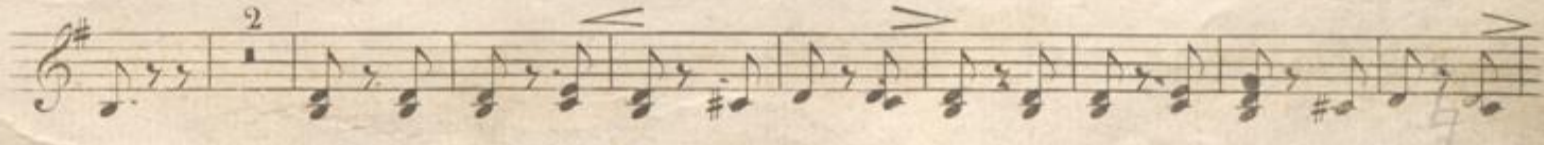
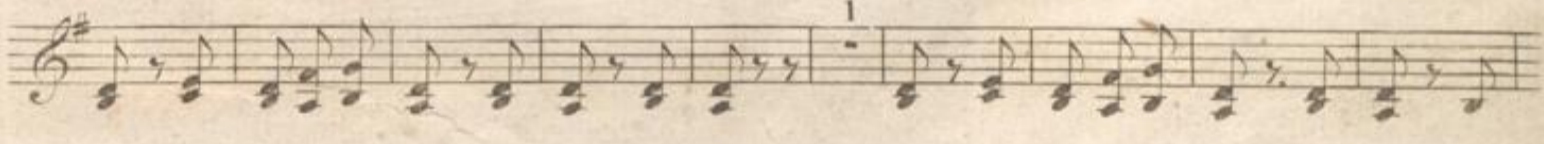
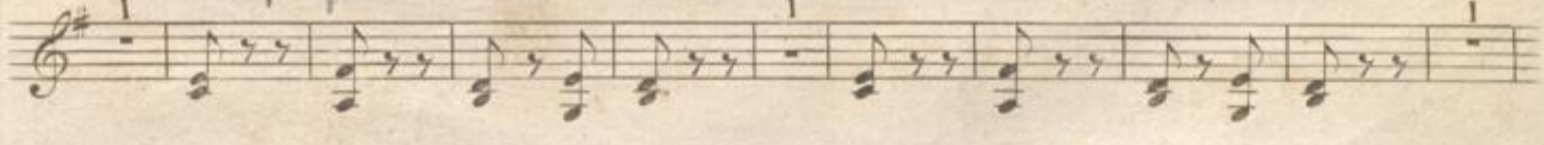
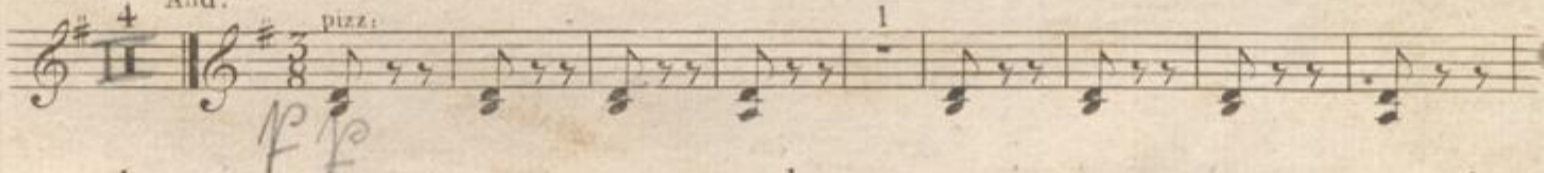
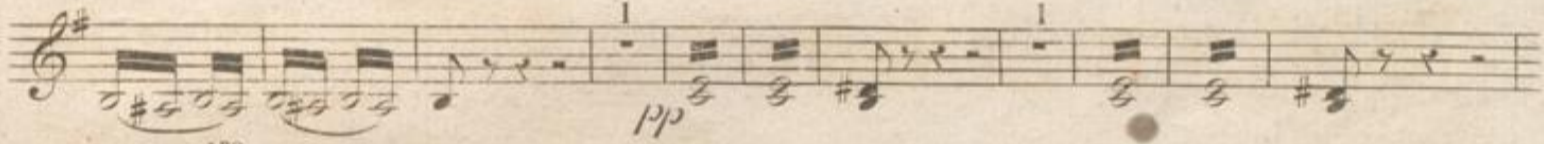
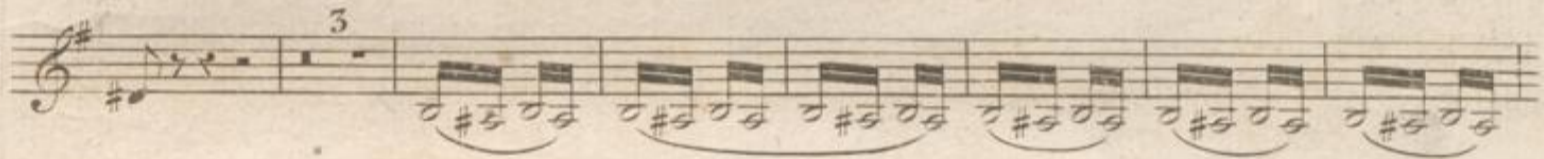
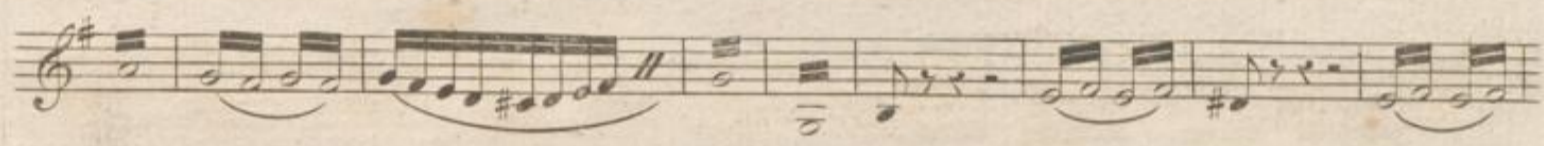
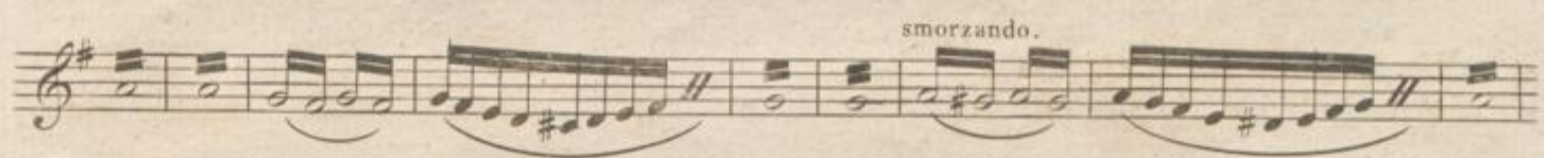
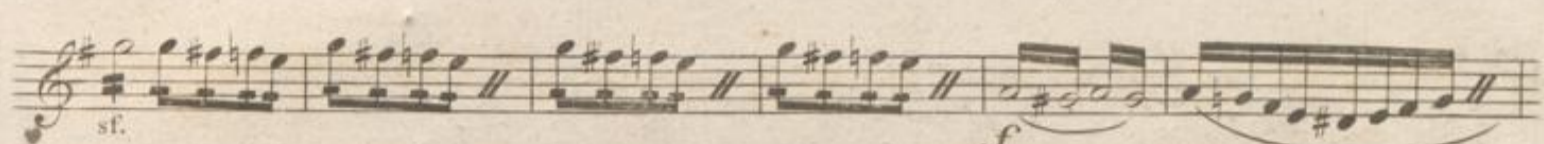
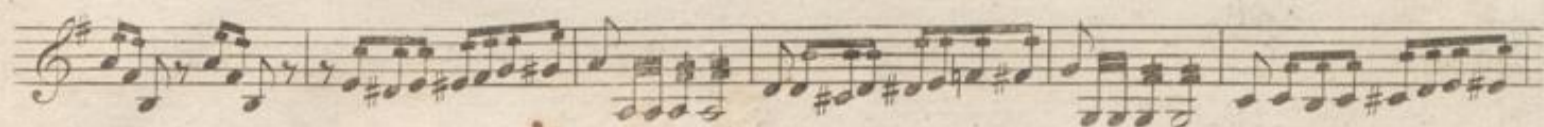
sotto voce.

2

rinf.

sf.

2^d VIOLON.



2^d VIOLON.

All^o vivace...

16

arco.

ppp

The musical score for the 2nd Violin part spans from measure 16 to 345. It is written in G major (one sharp) and 2/4 time. The tempo is marked 'All^o vivace...'. The score includes several dynamic markings: *ppp* (pianissimo) at the beginning, *sf.* (sforzando) in measures 17, 21, 25, 31, 37, and 43, and *tutta forza.* (tutti) in measure 49. A triplet of three notes is indicated in measure 31. The piece concludes with a final *ppp* marking in measure 345.

345

2^d VIOLON.

Musical score for the 2nd Violin part, page 5, measures 345-355. The score is written in treble clef with a key signature of three sharps (F#, C#, G#). The music consists of a single melodic line with various dynamics and articulations. The dynamics include *sf.* (sforzando), *pp* (pianissimo), and *sf.* (sforzando). The score features several slurs, accents, and a triplet of eighth notes in measure 353. The piece concludes with a double bar line in measure 355.

11

2

3

4

5

6

7

8

9

10

11

12

13

14

15

16

17

18

19

20

[Faint, illegible text, likely bleed-through from the reverse side of the page]