

Badische Landesbibliothek Karlsruhe

Digitale Sammlung der Badischen Landesbibliothek Karlsruhe

La Muette de Portici. Excerpts - Don Mus.Ms.S.B.6 Nr.11

Auber, Daniel-François-Esprit

[S.l.], 1830 (1830c)

Klarine I in D

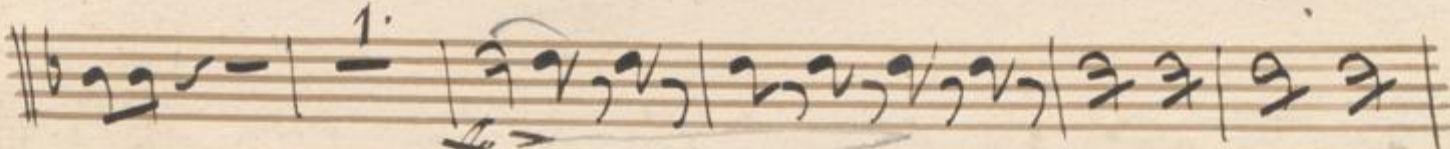
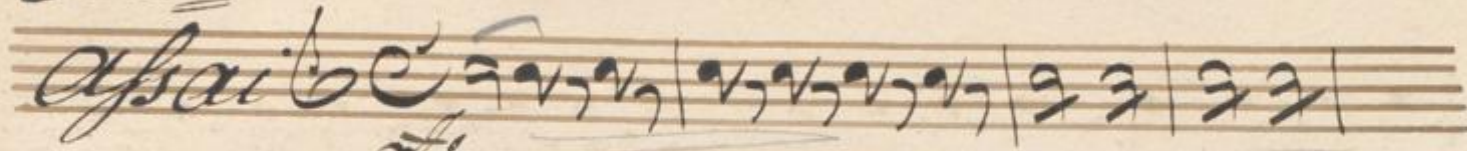
[urn:nbn:de:bsz:31-128150](https://nbn-resolving.org/urn:nbn:de:bsz:31-128150)

Ouverture

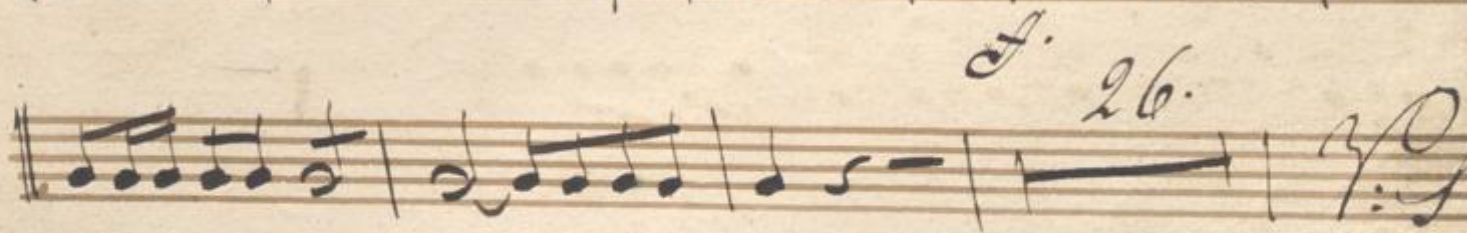
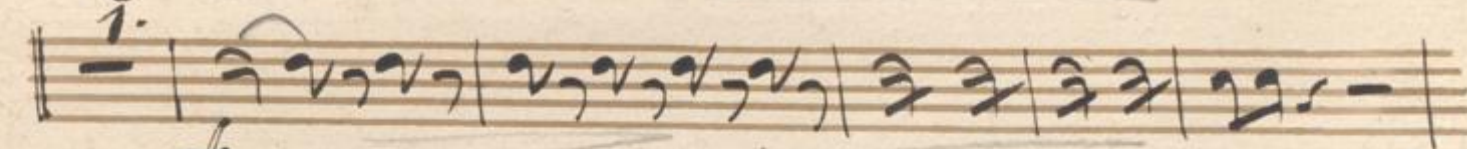
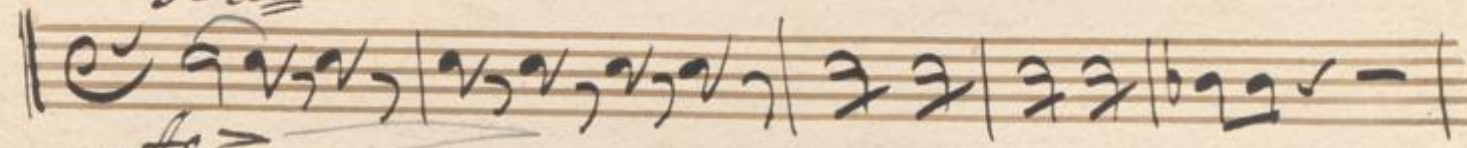
S in Harmonische
Clarinete 1^{mo} in D

No. 11.
Allo

Clarinete



Allo



Handwritten musical notation on a five-line staff, featuring a treble clef and a common time signature. The notation consists of a series of eighth and sixteenth notes.

Handwritten musical notation on a five-line staff, featuring a bass clef and a common time signature. The notation consists of a series of eighth and sixteenth notes.

Handwritten musical notation on a five-line staff, featuring a treble clef and a common time signature. It includes a dynamic marking *pp* and a measure with a *4.* above it.

Handwritten musical notation on a five-line staff, featuring a bass clef and a common time signature. It includes a dynamic marking *f*.

Handwritten musical notation on a five-line staff, featuring a bass clef and a common time signature. The notation consists of a series of eighth and sixteenth notes.

Handwritten musical notation on a five-line staff, featuring a bass clef and a common time signature. The notation consists of a series of eighth and sixteenth notes.

Handwritten musical notation on a five-line staff, featuring a bass clef and a common time signature. It includes a dynamic marking *i.*

Handwritten musical notation on a five-line staff, featuring a bass clef and a common time signature. It includes a dynamic marking *pp* and a section marked *6.2.* with blue 'X' marks above it. Below the staff, there is a red handwritten note: *16 in C. 194.*

Handwritten musical notation on a five-line staff, featuring a treble clef and a common time signature. The notation consists of a series of eighth and sixteenth notes.

Handwritten musical notation on a five-line staff, featuring a treble clef and a common time signature. It includes a dynamic marking *f* and a measure with a *4.* above it.

Handwritten musical notation on a five-line staff, featuring a treble clef and a common time signature. The notation consists of a series of eighth and sixteenth notes.

Handwritten musical notation on a single staff, featuring a treble clef, a key signature of one sharp (F#), and a 3/4 time signature. The notation includes a series of eighth and sixteenth notes, with a blue handwritten annotation 'pp' written above the staff.

Handwritten musical notation on a single staff, continuing the piece with various rhythmic patterns and rests.

Handwritten musical notation on a single staff, showing a sequence of notes and rests.

Handwritten musical notation on a single staff, including a key signature change to one sharp (F#) and a 3/4 time signature.

Handwritten musical notation on a single staff, featuring a treble clef and a key signature of one sharp (F#).

Handwritten musical notation on a single staff, showing a sequence of notes and rests.

Handwritten musical notation on a single staff, including a key signature change to one sharp (F#) and a 3/4 time signature. The annotation 'pens animés' is written above the staff.

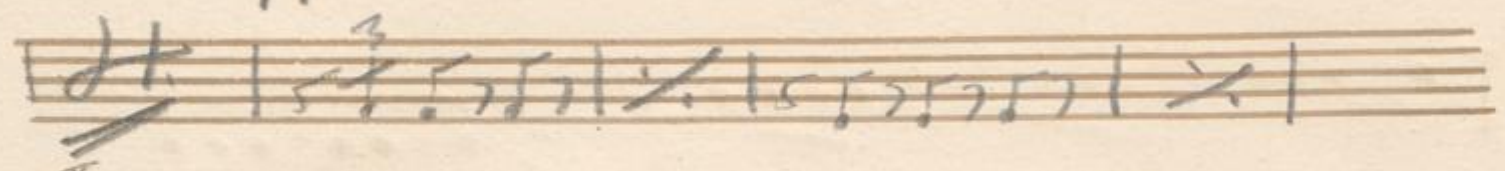
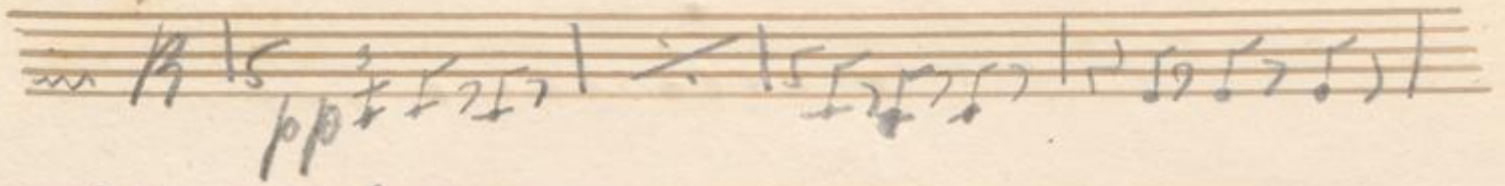
Handwritten musical notation on a single staff, featuring a treble clef and a key signature of one sharp (F#).

Handwritten musical notation on a single staff, showing a sequence of notes and rests.

Handwritten musical notation on a single staff, featuring a treble clef and a key signature of one sharp (F#).

Handwritten musical notation on a single staff, concluding the piece with a double bar line and a decorative flourish.

I



II

