

Badische Landesbibliothek Karlsruhe

Digitale Sammlung der Badischen Landesbibliothek Karlsruhe

I Bacchanali di Roma. Excerpts - Don Mus.Ms.S.B.6 Nr.25

Generali, Pietro

[S.l.], 1830 (1830c)

Bassposaune

[urn:nbn:de:bsz:31-128197](https://nbn-resolving.org/urn:nbn:de:bsz:31-128197)

Ouverture:

Trompon Basfo:

Generales

Postennuto:

Handwritten musical notation for the first system, including a treble clef, a common time signature (C), and a dynamic marking of *For.* (Forzando). The notation consists of two staves with various note values and rests.

Handwritten musical notation for the second system, featuring a treble clef, a common time signature, and a measure rest marked with the number 6.

Handwritten musical notation for the third system, including a treble clef, a key signature change to one sharp (F#), and a common time signature. A measure rest is marked with the number 1.

Allo: con Poco: 14

Handwritten musical notation for the fourth system, featuring a treble clef, a key signature of one sharp, and a common time signature.

Handwritten musical notation for the fifth system, including a treble clef, a key signature of one sharp, and a common time signature. A measure rest is marked with the number 28.

Handwritten musical notation for the sixth system, featuring a treble clef, a key signature of one sharp, and a common time signature.

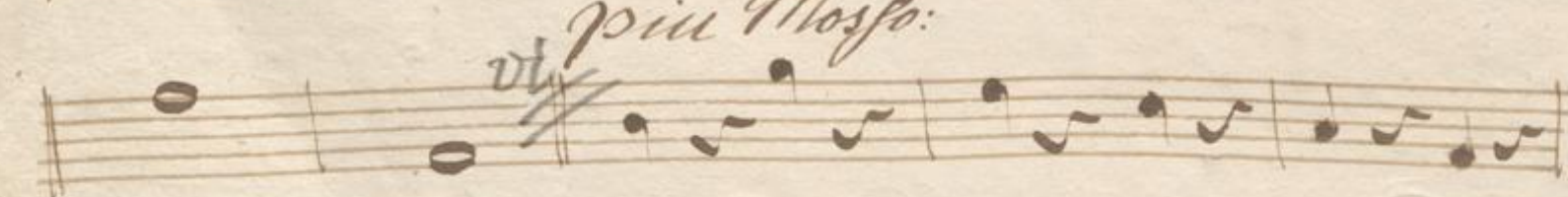
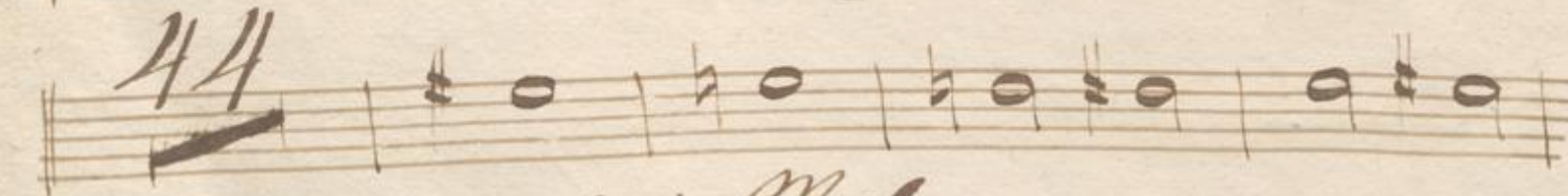
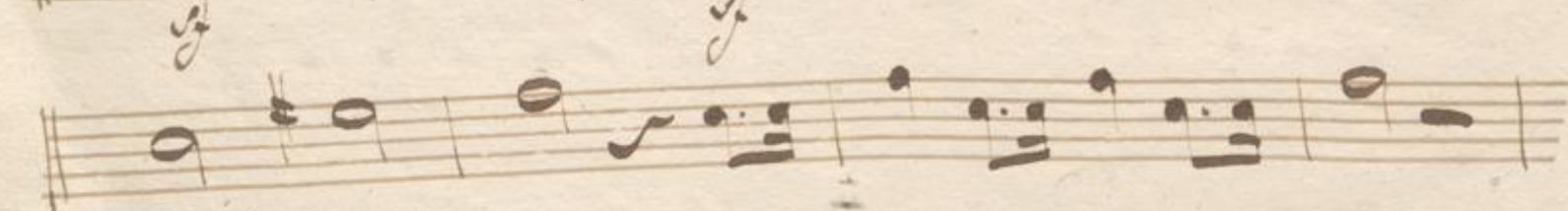
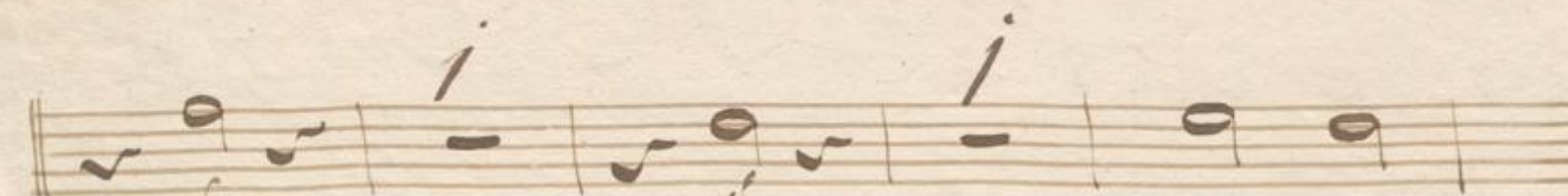
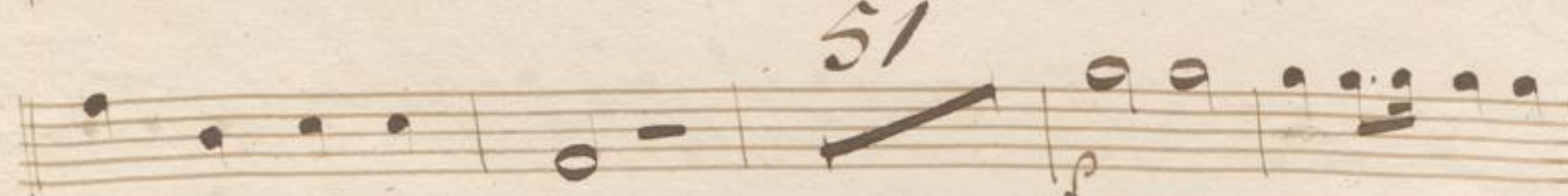
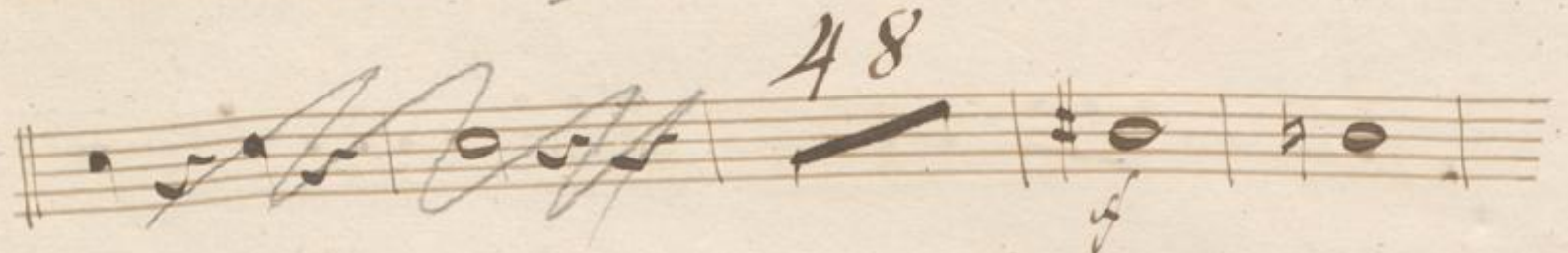
Handwritten musical notation for the seventh system, including a treble clef, a key signature of one sharp, and a common time signature.

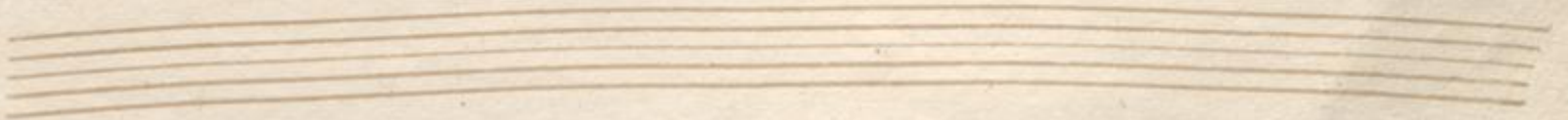
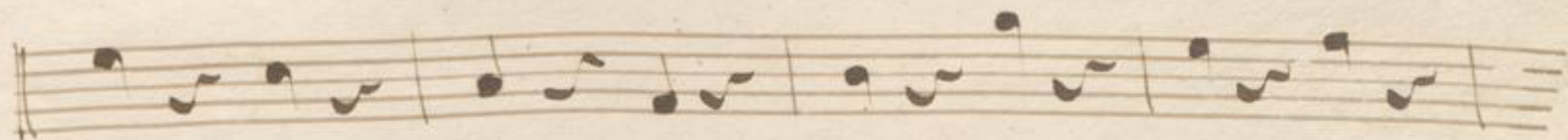
Handwritten musical notation for the eighth system, featuring a treble clef, a key signature of one sharp, and a common time signature.

Handwritten musical notation for the ninth system, including a treble clef, a key signature of one sharp, and a common time signature.

Handwritten musical notation for the tenth system, featuring a treble clef, a key signature of one sharp, and a common time signature.

Handwritten musical notation for the eleventh system, including a treble clef, a key signature of one sharp, and a common time signature.





This image shows ten horizontal musical staves on a single page of aged, yellowish paper. Each staff consists of five parallel lines. The paper has a slightly textured appearance with some minor foxing or small brown spots scattered across the surface. The staves are arranged vertically, one above the other, and are completely blank, with no musical notes, clefs, or other markings present.

P. Dittmar 16/84

4

