

Badische Landesbibliothek Karlsruhe

Digitale Sammlung der Badischen Landesbibliothek Karlsruhe

Le Concert à la cour. Excerpts - Don Mus.Ms.S.B.6 Nr.10

Auber, Daniel-François-Esprit

[S.l.], 1830 (1830c)

Violine II [1. Exemplar]

[urn:nbn:de:bsz:31-128143](https://nbn-resolving.org/urn:nbn:de:bsz:31-128143)

No: 10.

Ouverture

Violino 2do

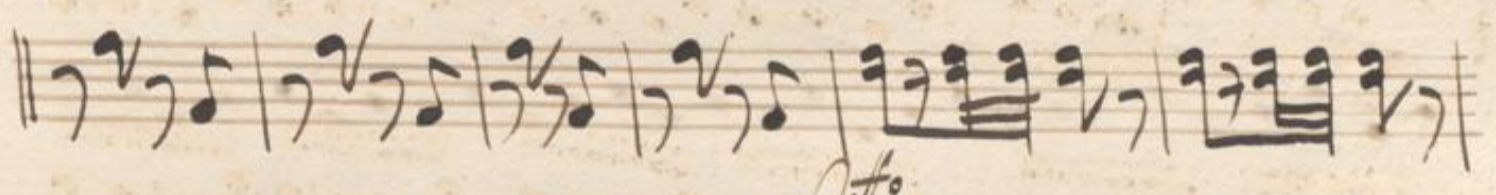
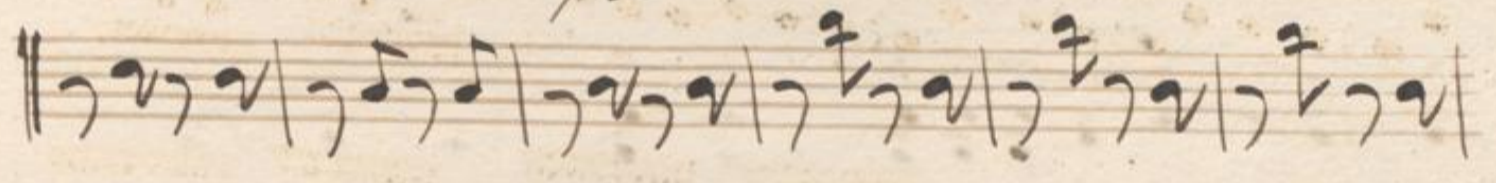
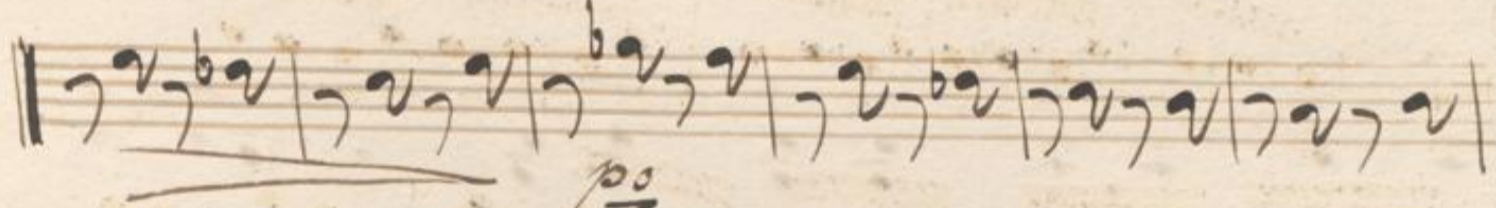
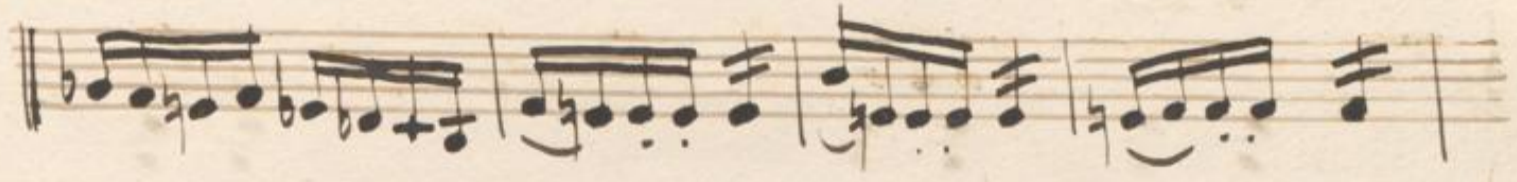
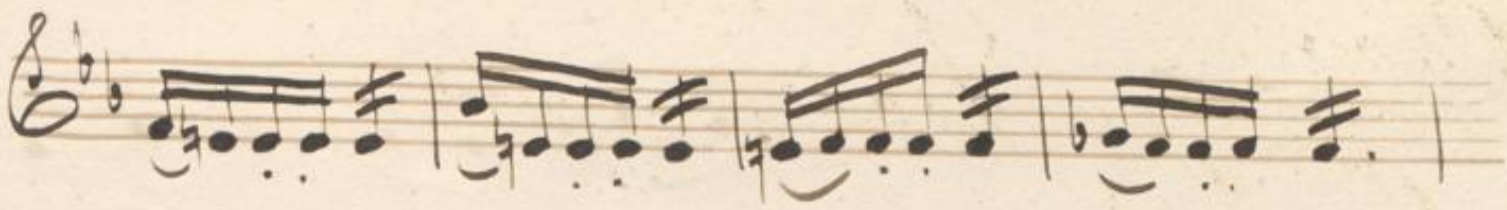
2.

Overture Violino 2do

Auber

Andantino

Con moto



Handwritten musical notation on a single staff, featuring a treble clef, a key signature of one sharp (F#), and a 6/8 time signature. The notation includes various note values and rests.

Handwritten musical notation on a single staff, featuring a treble clef and a 6/8 time signature. It includes a red "pizz." marking and a fermata over a note.

Allegretto

arco.

Handwritten musical notation on a single staff, featuring a treble clef, a key signature of one sharp (F#), and a 6/8 time signature. It includes a red "arco." marking.

Handwritten musical notation on a single staff, featuring a treble clef and a 6/8 time signature. The notation consists of a series of eighth notes.

Handwritten musical notation on a single staff, featuring a treble clef and a 6/8 time signature. The notation consists of a series of eighth notes.

Handwritten musical notation on a single staff, featuring a treble clef and a 6/8 time signature. The notation consists of a series of eighth notes.

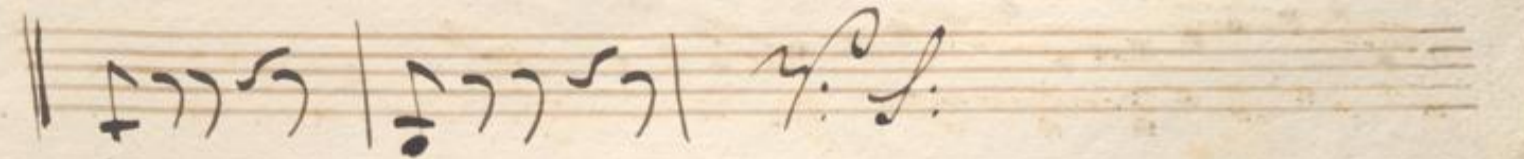
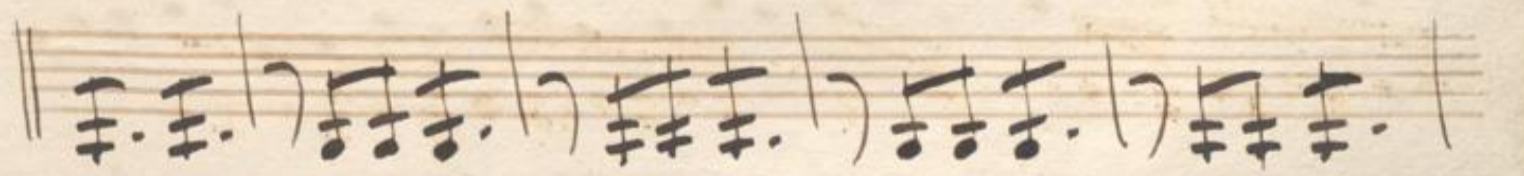
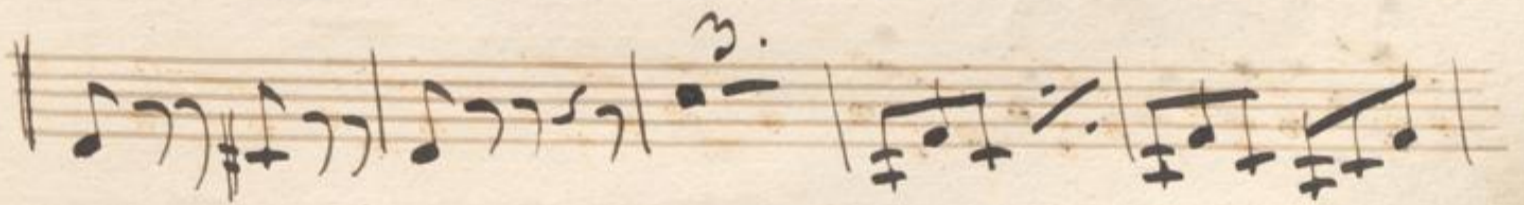
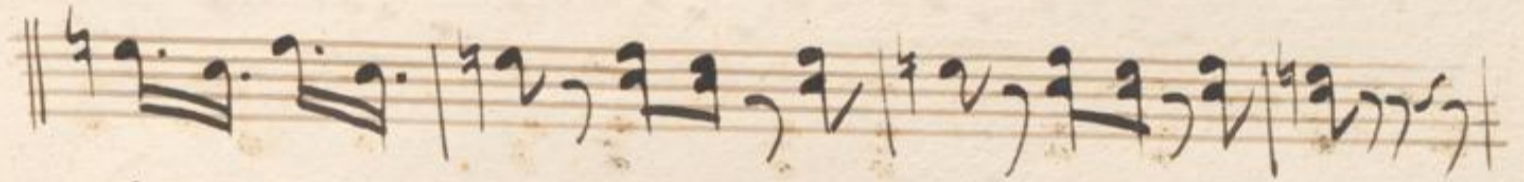
Handwritten musical notation on a single staff, featuring a treble clef and a 6/8 time signature. The notation consists of a series of eighth notes.

Handwritten musical notation on a single staff, featuring a treble clef and a 6/8 time signature. The notation consists of a series of eighth notes.

Handwritten musical notation on a single staff, featuring a treble clef and a 6/8 time signature. The notation consists of a series of eighth notes.

Handwritten musical notation on a single staff, featuring a treble clef and a 6/8 time signature. The notation consists of a series of eighth notes.

Handwritten musical notation on a single staff, featuring a treble clef and a 6/8 time signature. The notation consists of a series of eighth notes.



A handwritten musical score consisting of ten staves. The notation is in a historical style, likely from the 18th or 19th century. The first staff begins with a treble clef and a key signature of one sharp (F#). The music is written in a single system across the ten staves. The notation includes various note values, rests, and bar lines. There are some annotations in the lower staves, including a '1.' above a note and a 'p' (piano) marking below a note. The paper shows signs of age, with some staining and wear at the edges.

Handwritten musical notation on a single staff, featuring a treble clef, a key signature of one flat, and a 4/4 time signature. The notation includes various note values and rests.

Handwritten musical notation on a single staff, featuring a bass clef and a 4/4 time signature. The notation includes various note values and rests.

Handwritten musical notation on a single staff, featuring a bass clef and a 4/4 time signature. The notation includes various note values and rests.

Handwritten musical notation on a single staff, featuring a bass clef and a 4/4 time signature. The notation includes various note values and rests.

Handwritten musical notation on a single staff, featuring a bass clef and a 4/4 time signature. The notation includes various note values and rests, with a fermata over a note and a *pp* dynamic marking.

Handwritten musical notation on a single staff, featuring a bass clef and a 4/4 time signature. The notation includes various note values and rests.

Handwritten musical notation on a single staff, featuring a bass clef and a 4/4 time signature. The notation includes various note values and rests, with a fermata over a note and a *pp* dynamic marking.

Handwritten musical notation on a single staff, featuring a bass clef and a 4/4 time signature. The notation includes various note values and rests.

Handwritten musical notation on a single staff, featuring a bass clef and a 4/4 time signature. The notation includes various note values and rests.

Handwritten musical notation on a single staff, featuring a bass clef and a 4/4 time signature. The notation includes various note values and rests, with a *pp* dynamic marking.

Handwritten musical notation on a single staff, featuring a bass clef and a 4/4 time signature. The notation includes various note values and rests, ending with a double bar line and a *ff* dynamic marking.

piu moderato

piu stretto