

# **Badische Landesbibliothek Karlsruhe**

**Digitale Sammlung der Badischen Landesbibliothek Karlsruhe**

**La Muette de Portici. Excerpts - Don Mus.Ms.S.B.6 Nr.11**

**Auber, Daniel-François-Esprit**

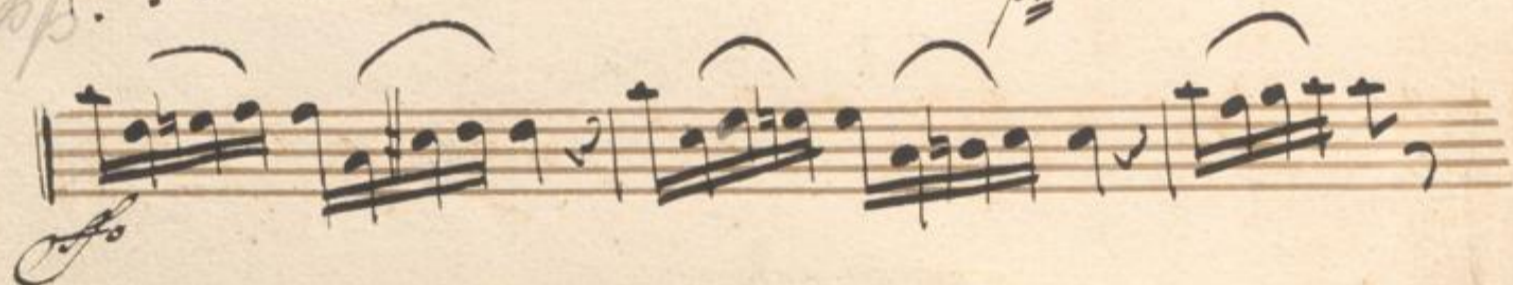
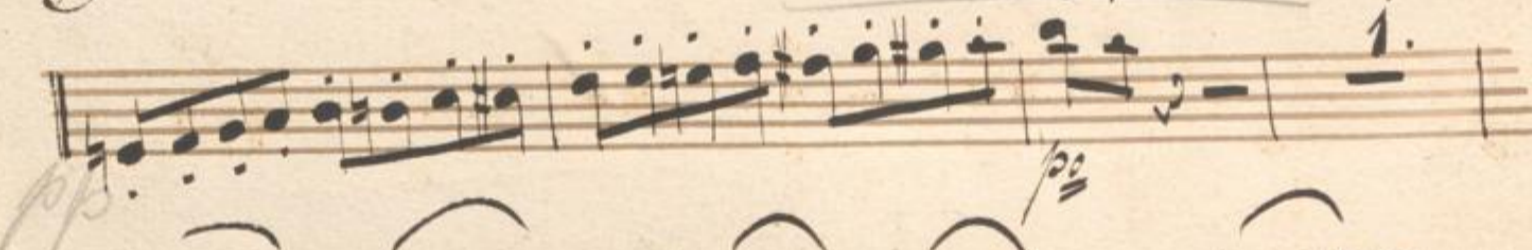
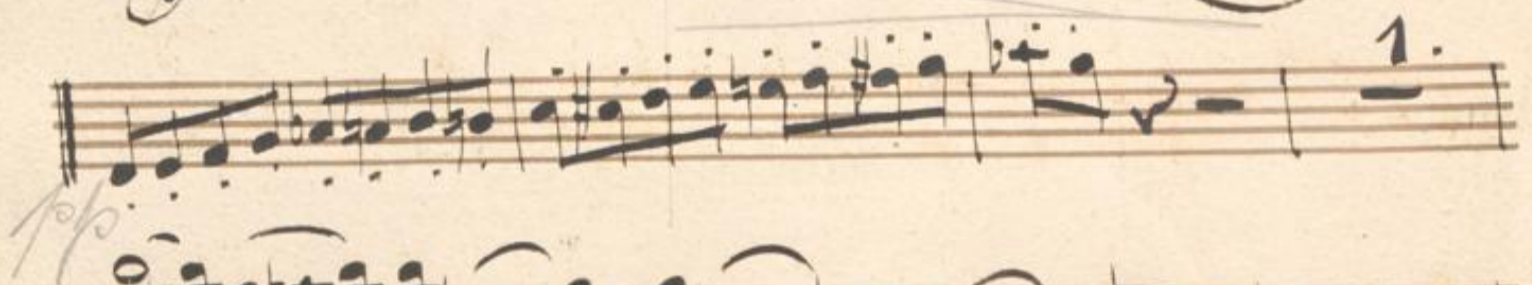
**[S.l.], 1830 (1830c)**

Ouverture

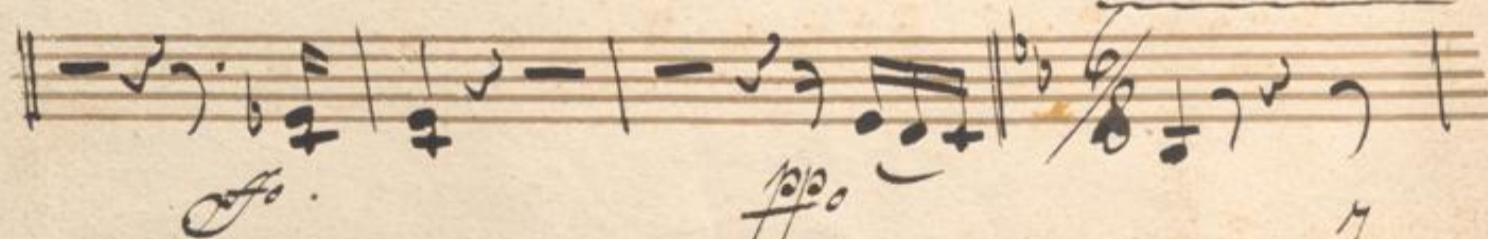
[urn:nbn:de:bsz:31-128150](https://nbn-resolving.org/urn:nbn:de:bsz:31-128150)

Overture Violino *pino*

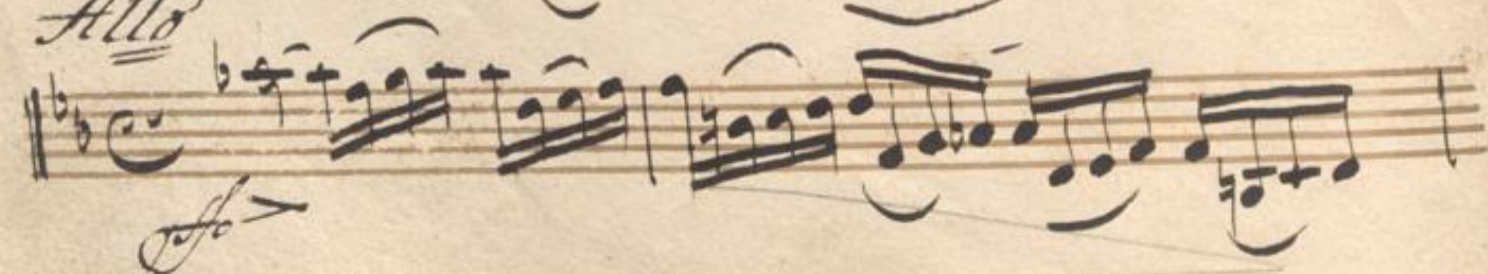
*Allo Asai*



*Andante*



*Allo*



Handwritten musical score on page 99, featuring ten staves of music. The notation includes treble clefs, a key signature of one flat (B-flat), and a 2/4 time signature. The score contains various musical elements such as notes, rests, slurs, and dynamic markings. Performance markings include *ppp* (pianissimo), *f* (forte), and *pp* (piano). There are also numerical markings: '1.' at the end of the first staff, '2.' at the end of the third staff, '3.' and '2.' above the fourth staff, '10.' above the fifth staff, '4.' above the sixth staff, and '4.' above the seventh staff. The piece concludes with a double bar line and a repeat sign at the end of the tenth staff.

Handwritten musical score on page 100, featuring ten staves of music. The notation includes various notes, rests, and dynamic markings such as *mf*, *ff*, *rit.*, and *all.*. The music is written in a style characteristic of 18th or 19th-century manuscripts. The first staff begins with a treble clef and a key signature of one sharp (F#). The subsequent staves use different clefs, including alto and bass clefs. The notation is dense, with many beamed notes and slurs. There are some handwritten annotations and corrections throughout the score, including a large '20' written in the middle of the fifth staff.

A handwritten musical score on 11 staves. The notation is in a historical style, featuring a treble clef and a key signature of one sharp (F#). The music consists of a single melodic line with various rhythmic values, including eighth and sixteenth notes, often grouped with slurs. There are several dynamic markings: 'p' (piano) appears on the fourth and sixth staves, and 'f' (forte) appears on the eighth and tenth staves. The manuscript shows signs of age, with some ink bleed-through from the reverse side and some staining on the paper.

A handwritten musical score consisting of ten staves. The notation includes treble clefs, various note values (quarter, eighth, sixteenth notes), rests, and dynamic markings such as *po* and *mol*. The score is written in a historical style with some ink bleed-through from the reverse side of the page. The first staff begins with a treble clef and a key signature of one sharp (F#). The music features a mix of melodic lines and rhythmic patterns, with some staves showing complex textures like sixteenth-note runs.

This page contains ten staves of handwritten musical notation. The notation is in a single system, likely for a single melodic line. The first staff begins with a treble clef and a key signature of one sharp (F#). The music consists of a series of notes, many of which are beamed together in groups. There are several dynamic markings throughout the piece, including accents (>) and slurs. The paper shows signs of age, with some staining and wear at the top edge.

A handwritten musical score on ten staves. The notation includes various note values, rests, and dynamic markings. The first staff begins with a treble clef and a key signature of one sharp (F#). The score contains several slurs and accents. Annotations include "pizz." in the second staff, "arco" in the third staff, and "plus anime" in red ink at the end of the tenth staff. The handwriting is in black ink on aged, slightly yellowed paper.



This page contains ten staves of handwritten musical notation. The notation is dense and includes various note values, rests, and clefs. The first staff begins with a treble clef and a key signature of one sharp (F#). The music consists of several measures of complex rhythmic patterns, including many beamed notes and rests. The notation is written in a cursive, historical style. The bottom three staves of the page are empty, showing only the five-line staff structure.

This image shows ten blank musical staves on aged, yellowed paper. Each staff consists of five horizontal lines. The paper has some minor foxing and a small dark spot on the fifth staff. The staves are arranged vertically down the page.

This image shows the right edge of the adjacent page, featuring several staves of musical notation. The notation includes clefs, a key signature with a sharp sign, and some handwritten text in a cursive script. The visible text includes "Fr", "D.", "L.", and "m".