

Badische Landesbibliothek Karlsruhe

Digitale Sammlung der Badischen Landesbibliothek Karlsruhe

Le Concert à la cour. Excerpts - Don Mus.Ms.S.B.6 Nr.10

Auber, Daniel-François-Esprit

[S.l.], 1830 (1830c)

Ouverture

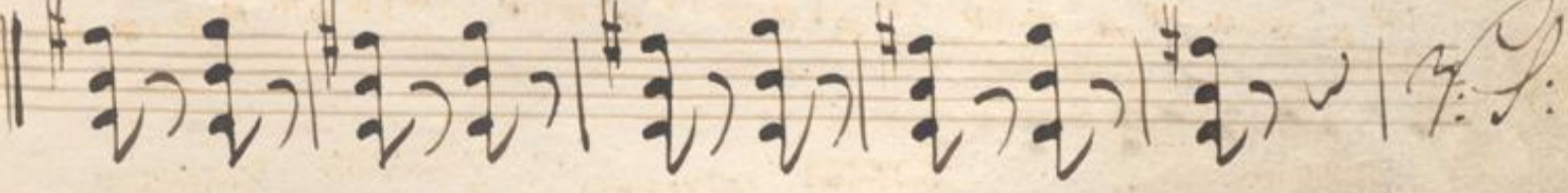
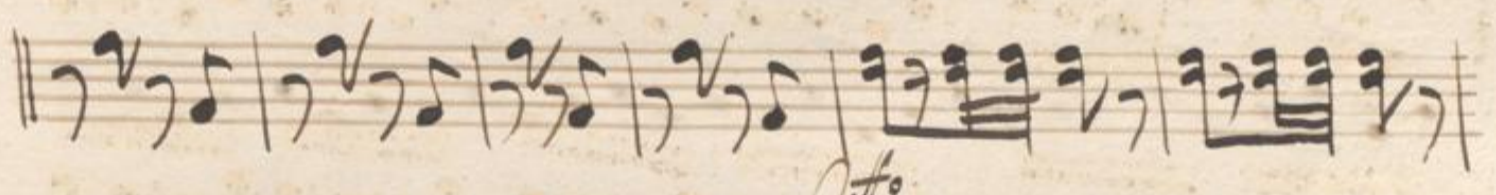
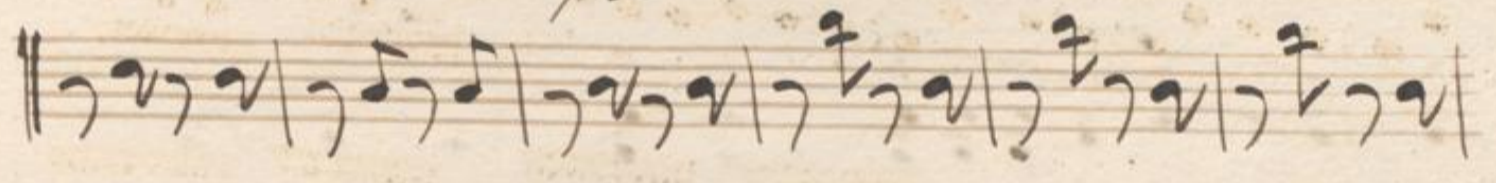
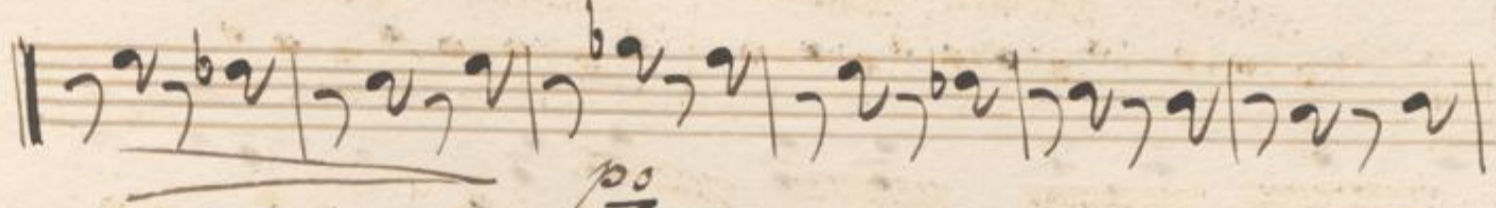
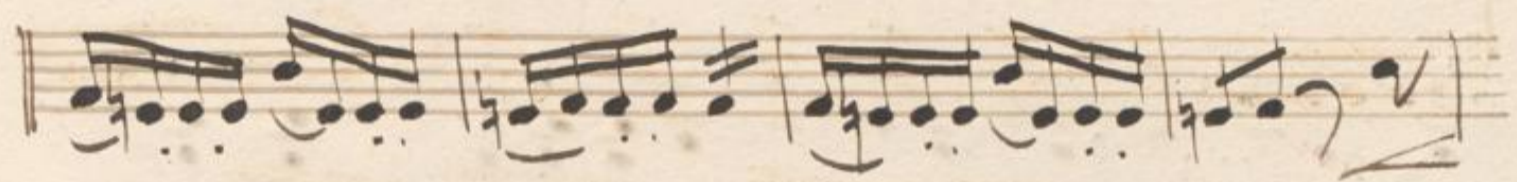
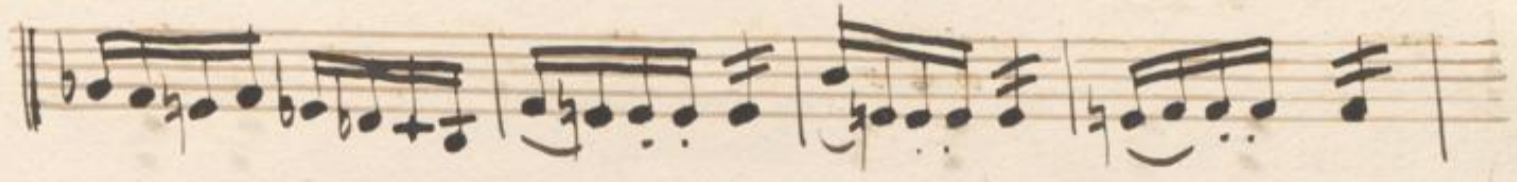
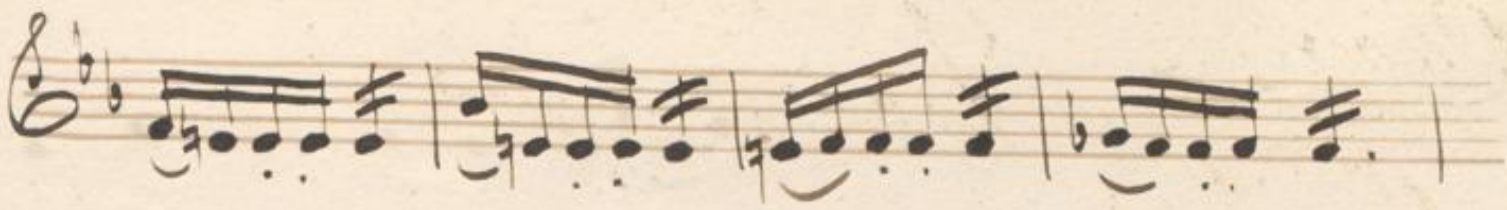
[urn:nbn:de:bsz:31-128143](https://nbn-resolving.org/urn:nbn:de:bsz:31-128143)

Overture *Violino 2do*

Auber

Andantino

Con moto



Handwritten musical notation on a five-line staff, featuring a treble clef, a key signature of one sharp (F#), and a 6/8 time signature. The notation includes various note values and rests.

Handwritten musical notation on a five-line staff, featuring a treble clef and a 6/8 time signature. A red 'f' marking is visible above the staff.

Allegretto

arco.

Handwritten musical notation on a five-line staff, featuring a treble clef, a key signature of one sharp (F#), and a 6/8 time signature. A red 'arco.' marking is visible below the staff.

Handwritten musical notation on a five-line staff, featuring a treble clef and a 6/8 time signature.

Handwritten musical notation on a five-line staff, featuring a treble clef and a 6/8 time signature.

Handwritten musical notation on a five-line staff, featuring a treble clef and a 6/8 time signature.

Handwritten musical notation on a five-line staff, featuring a treble clef and a 6/8 time signature.

Handwritten musical notation on a five-line staff, featuring a treble clef and a 6/8 time signature.

Handwritten musical notation on a five-line staff, featuring a treble clef and a 6/8 time signature.

Handwritten musical notation on a five-line staff, featuring a treble clef and a 6/8 time signature.

Handwritten musical notation on a five-line staff, featuring a treble clef and a 6/8 time signature.

Handwritten musical notation on a single staff, featuring a treble clef and a key signature of one sharp (F#). The notation includes eighth and sixteenth notes, rests, and a repeat sign.

Handwritten musical notation on a single staff, continuing the piece with eighth and sixteenth notes.

Handwritten musical notation on a single staff, continuing the piece with eighth and sixteenth notes.

Handwritten musical notation on a single staff, continuing the piece with eighth and sixteenth notes.

Handwritten musical notation on a single staff, continuing the piece with eighth and sixteenth notes.

Handwritten musical notation on a single staff, starting with a triplet of eighth notes marked with a '3.' above and a 'p' below.

Handwritten musical notation on a single staff, continuing the piece with eighth and sixteenth notes.

Handwritten musical notation on a single staff, continuing the piece with eighth and sixteenth notes, including a triplet of eighth notes marked with a '3.' above.

Handwritten musical notation on a single staff, continuing the piece with eighth and sixteenth notes.

Handwritten musical notation on a single staff, continuing the piece with eighth and sixteenth notes.

Two empty musical staves at the bottom of the page.

A handwritten musical score consisting of ten staves. The notation is in a historical style, likely from the 18th or 19th century. The first staff begins with a treble clef and a key signature of one sharp (F#). The music is written in a single system across the ten staves. The notation includes various note values, rests, and bar lines. There are some annotations in the lower staves, including a 'p' (piano) marking and a '1.' (first ending) marking. The paper shows signs of age, with some staining and wear at the edges.

Handwritten musical notation on a single staff, featuring a treble clef, a key signature of one flat, and a 4/4 time signature. The notation includes various note values and rests.

Handwritten musical notation on a single staff, featuring a bass clef and a 4/4 time signature. The notation includes various note values and rests.

Handwritten musical notation on a single staff, featuring a bass clef and a 4/4 time signature. The notation includes various note values and rests.

Handwritten musical notation on a single staff, featuring a bass clef and a 4/4 time signature. The notation includes various note values and rests.

Handwritten musical notation on a single staff, featuring a bass clef and a 4/4 time signature. The notation includes various note values and rests, with a fermata and a *5.* marking above a note.

Handwritten musical notation on a single staff, featuring a bass clef and a 4/4 time signature. The notation includes various note values and rests, with a *po* marking below a note.

Handwritten musical notation on a single staff, featuring a bass clef and a 4/4 time signature. The notation includes various note values and rests, with a fermata and a *3.* marking above a note, and a *po* marking below a note.

Handwritten musical notation on a single staff, featuring a bass clef and a 4/4 time signature. The notation includes various note values and rests.

Handwritten musical notation on a single staff, featuring a bass clef and a 4/4 time signature. The notation includes various note values and rests.

Handwritten musical notation on a single staff, featuring a bass clef and a 4/4 time signature. The notation includes various note values and rests, with a *po* marking below a note.

Handwritten musical notation on a single staff, featuring a bass clef and a 4/4 time signature. The notation includes various note values and rests, ending with a double bar line and a *fin.* marking.

