

# **Badische Landesbibliothek Karlsruhe**

**Digitale Sammlung der Badischen Landesbibliothek Karlsruhe**

**{Wilhelm Tell - Oper - Gioachino Rossini}**

Violine II

Nro. 6.

Ouverture

Violino 2do

Tell



Ouverture A Violino Solo

Andante *44.*

*Allo*

*ppp*  
*1.*  
*lento voce*

*1.*  
*lento voce*

*1.*

*1.* *2.*

*2 1 3 3 2 2 1 1*



A handwritten musical score on ten staves. The notation includes various note values, rests, and dynamic markings. The first staff begins with a treble clef and a key signature of one sharp (F#). The music is written in a style characteristic of 18th or 19th-century manuscript notation. There are several slurs and phrasing marks throughout. Dynamic markings include 'f' (forte) and 'p' (piano). Some staves have small numbers written below them, possibly indicating fingerings or measures. The paper shows signs of age, with some staining and discoloration.



*Andte*



A handwritten musical score consisting of 12 staves. The notation includes various rhythmic values, accidentals, and dynamic markings. The score is written in a cursive hand typical of 18th or 19th-century manuscripts. The key signature has three sharps (F#, C#, G#). The time signature is not explicitly written but appears to be 3/4 based on the note values. The piece concludes with a double bar line and a fermata on the final note of the last staff.

Annotations and markings include:

- f.* (forte) at the beginning of the first staff.
- is* above the second staff.
- 3.* above the third staff.
- pp* (pianissimo) below the third staff.
- f.* (forte) below the sixth staff.
- pp* (pianissimo) below the seventh staff.
- pp* (pianissimo) below the eighth staff.
- pp* (pianissimo) below the ninth staff.
- pp* (pianissimo) below the tenth staff.
- pp* (pianissimo) below the eleventh staff.
- pp* (pianissimo) below the twelfth staff.



This page contains a handwritten musical score consisting of ten staves. The notation is in a historical style, likely from the 18th or 19th century. The first staff begins with a treble clef and a key signature of three sharps (F#, C#, G#). The music is written in a single system, with various note values, rests, and articulation marks. There are several dynamic markings, including *ff* (fortissimo) and *mp* (mezzo-piano). The score includes complex rhythmic patterns, such as triplets and sixteenth-note runs. The paper shows signs of age, with some staining and wear at the edges.



Handwritten musical score on page 39, featuring ten staves of music. The notation includes various note values, rests, and performance markings such as *1.*, *2.*, *3.*, *2, 2, 1*, and *ges*. The music is written in a single system across the ten staves. The first staff begins with a treble clef and a key signature of one sharp (F#). The notation is dense, with many beamed notes and slurs. The bottom of the page shows three empty staves.



A series of 12 empty musical staves, each consisting of five horizontal lines, arranged vertically on an aged, yellowish manuscript page. The staves are completely blank, with no notes or markings.

*Or  
Fu  
Det*

*T*

*A*

*1*

*1*

*b*

*T*

*for:*

*1*

*1*

*1*



No. 6.

Violino II.



2 GUILLAUME TELL.  
Ouverture à grand Orchestre.

2<sup>d</sup> VIGLON.

Andante.

40

Violonc.<sup>1</sup> Soli.

All.<sup>o</sup> V.<sup>o</sup> 2<sup>o</sup>.

pp

sotto voce.

sotto voce.

sotto voce.

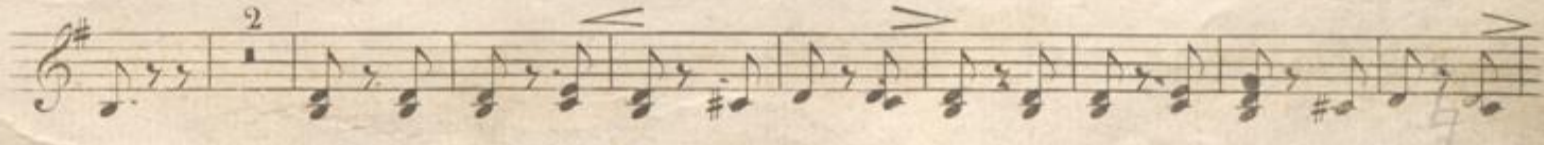
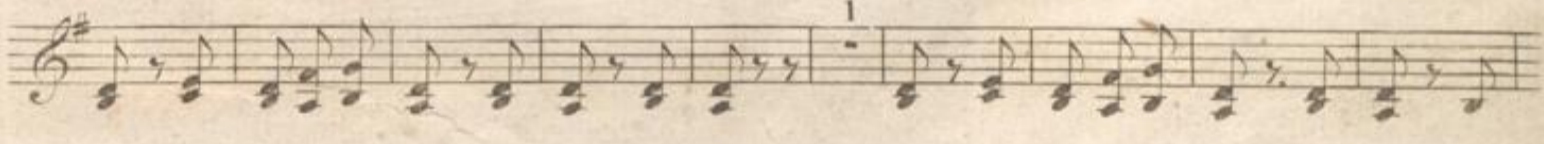
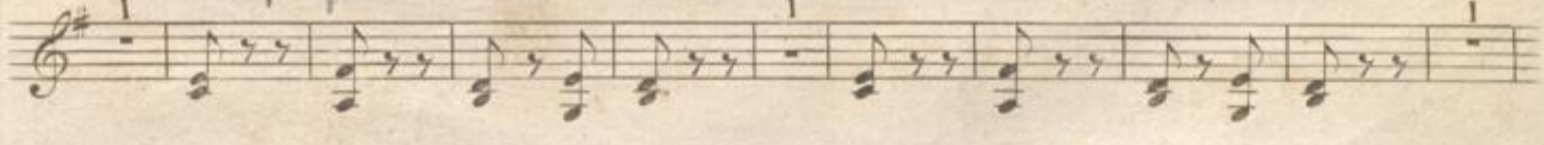
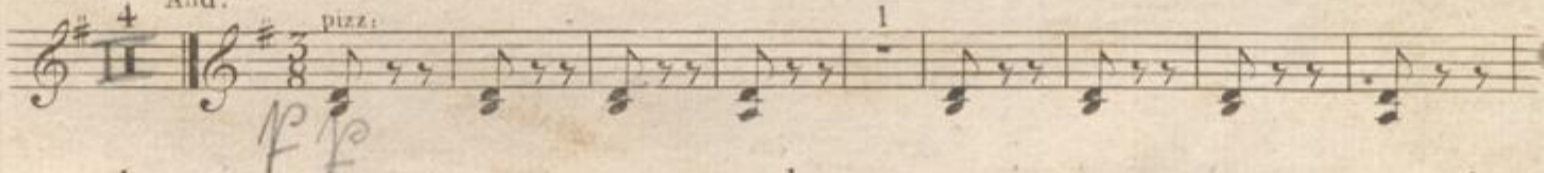
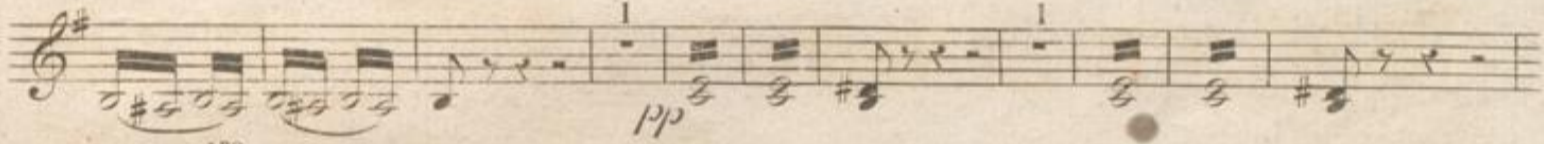
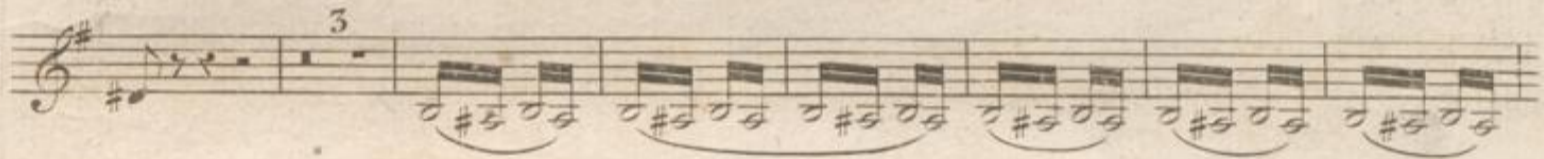
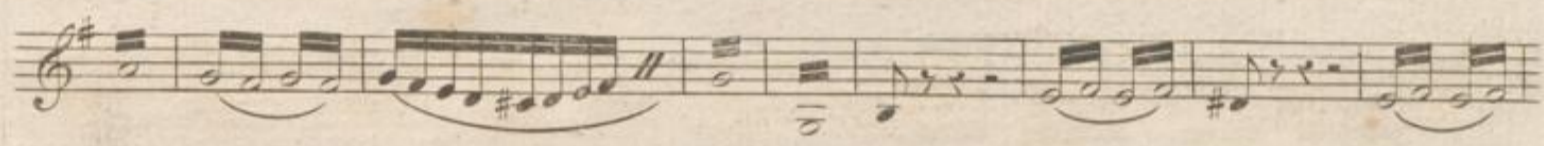
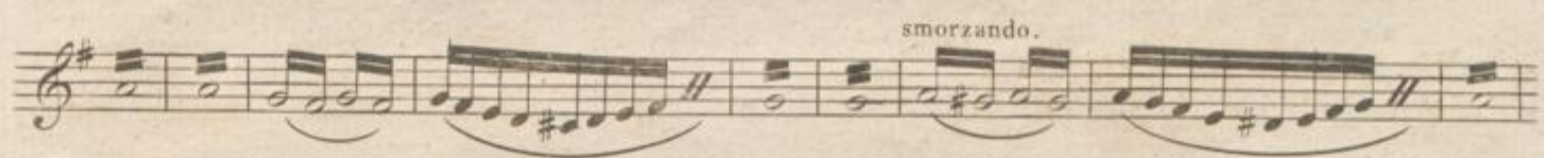
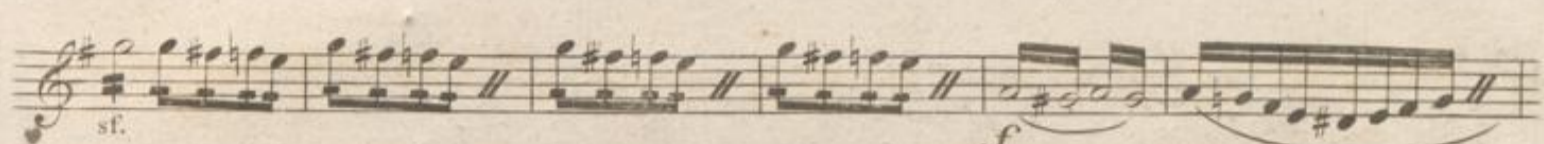
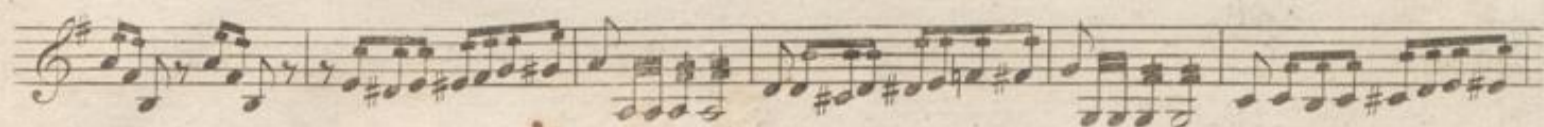
2

rinf.

sf.



2<sup>d</sup> VIOLON.





2<sup>d</sup> VIOLON.

All<sup>o</sup> vivace...

16

arco.

*ppp*

The musical score for the 2nd Violin part spans from measure 16 to 345. It is written in G major (one sharp) and 2/4 time. The tempo is marked 'All<sup>o</sup> vivace...'. The score includes several dynamic markings: *ppp* (pianissimo) at the beginning, *sf.* (sforzando) in measures 17, 21, 25, 31, 37, and 43, and *tutta forza.* (tutti) in measure 49. There are also markings for *arco.* (arco) and a '3' (triple) in measure 31. The piece concludes with a *ppp* marking in measure 345.

345



2<sup>d</sup> VIOLON.

Musical score for the 2nd Violin part, page 5, measures 345-355. The score is written in treble clef with a key signature of three sharps (F#, C#, G#). It features a variety of rhythmic patterns, including sixteenth and thirty-second notes, and rests. Dynamic markings include *sf.* (sforzando), *pp* (pianissimo), and *sf.* (sforzando). There are also performance instructions such as *1* and *2* above notes, and a *3* above a triplet. The page number 345 is printed at the bottom center.



11

2

3

4

5

6

7

8

9

10

11

12

13

14

15

16

17

18

[Faint, illegible text, likely bleed-through from the reverse side of the page]