

# **Badische Landesbibliothek Karlsruhe**

**Digitale Sammlung der Badischen Landesbibliothek Karlsruhe**

**Le Concert à la cour. Excerpts - Don Mus.Ms.S.B.6 Nr.10**

**Auber, Daniel-François-Esprit**

**[S.l.], 1830 (1830c)**

Violine II

[urn:nbn:de:bsz:31-128143](https://nbn-resolving.org/urn:nbn:de:bsz:31-128143)

No: 10.  
        

Ouverture

Violino 2do

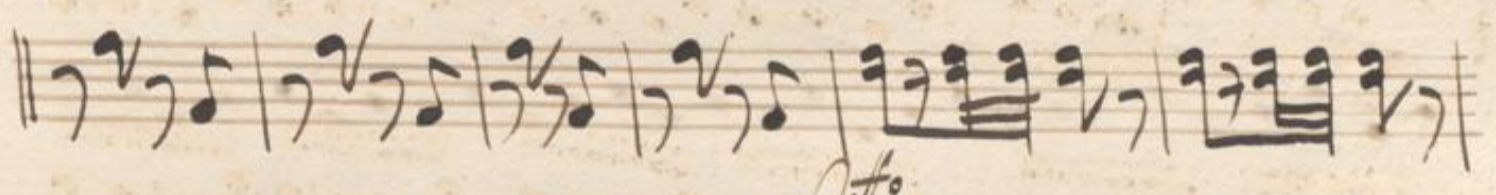
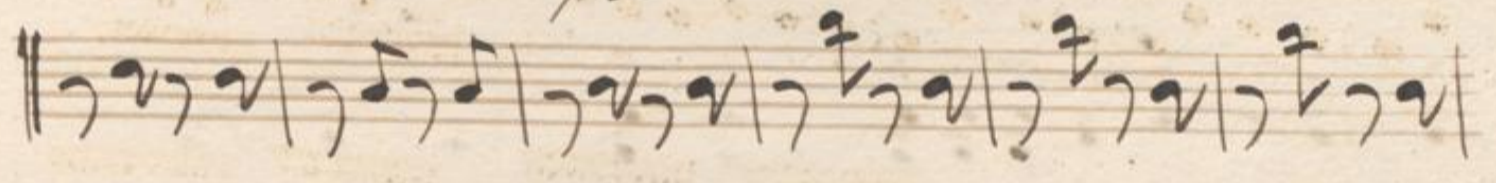
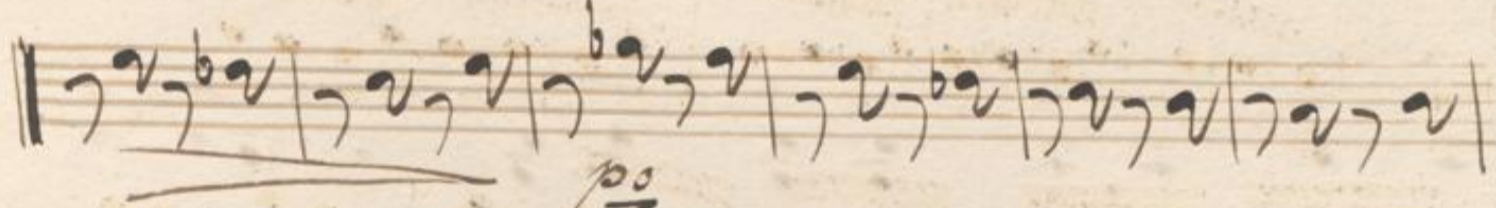
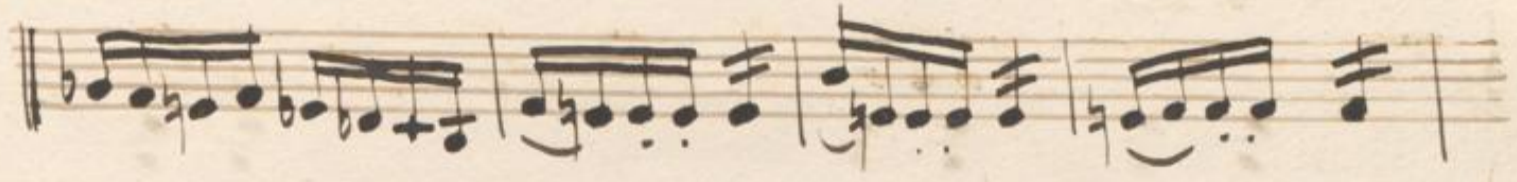
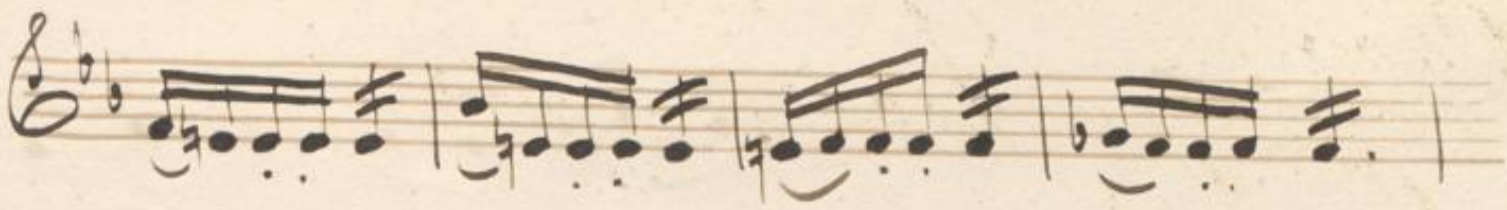
2.

Overture Violino 2do

*Auber*

*Andantino*

*Con moto*



Handwritten musical notation on a five-line staff, featuring a treble clef, a key signature of one sharp (F#), and a 6/8 time signature. The notation includes various note values and rests.

Handwritten musical notation on a five-line staff, featuring a treble clef and a 6/8 time signature. A red 'f' marking is visible above the staff.

*Allegretto*

*arco.*

Handwritten musical notation on a five-line staff, featuring a treble clef, a key signature of one sharp (F#), and a 6/8 time signature. A red 'arco.' marking is visible below the staff.

Handwritten musical notation on a five-line staff, featuring a treble clef and a 6/8 time signature.

Handwritten musical notation on a five-line staff, featuring a treble clef and a 6/8 time signature.

Handwritten musical notation on a five-line staff, featuring a treble clef and a 6/8 time signature.

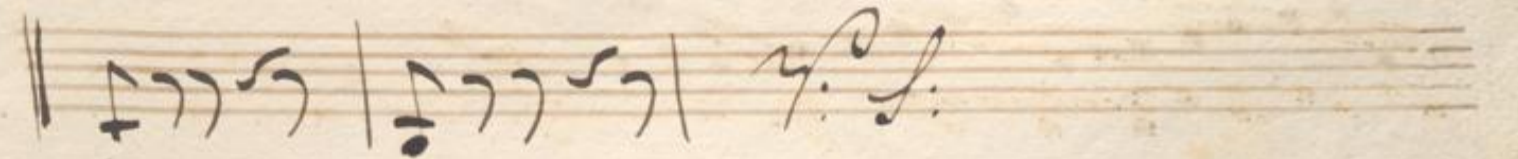
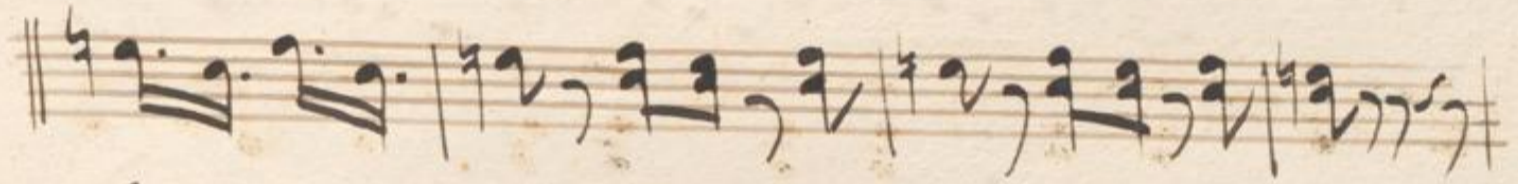
Handwritten musical notation on a five-line staff, featuring a treble clef and a 6/8 time signature.

Handwritten musical notation on a five-line staff, featuring a treble clef and a 6/8 time signature.

Handwritten musical notation on a five-line staff, featuring a treble clef and a 6/8 time signature.

Handwritten musical notation on a five-line staff, featuring a treble clef and a 6/8 time signature.

Handwritten musical notation on a five-line staff, featuring a treble clef and a 6/8 time signature.



A page of handwritten musical notation on ten staves. The notation is in black ink on aged, yellowish paper. The first staff begins with a treble clef and a key signature of one sharp (F#). The music consists of various rhythmic figures, including eighth and sixteenth notes, often beamed together. There are several measures with complex rhythmic patterns, possibly representing a dance or a specific instrumental piece. The notation includes stems, beams, and note heads. Some staves have a 'C' time signature, indicating common time. The page ends with a double bar line and repeat dots.

Partial view of the adjacent page, showing the right edge of several staves of handwritten musical notation. The notation is similar to the page on the left, with notes and stems visible.

Handwritten musical notation on a single staff, featuring a treble clef, a key signature of one flat, and a 4/4 time signature. The notes are mostly quarter and eighth notes.

Handwritten musical notation on a single staff, featuring a bass clef and a 4/4 time signature. The notes are mostly eighth and sixteenth notes.

Handwritten musical notation on a single staff, featuring a bass clef and a 4/4 time signature. The notes are mostly eighth and sixteenth notes.

Handwritten musical notation on a single staff, featuring a treble clef and a 4/4 time signature. The notes are mostly quarter and eighth notes.

Handwritten musical notation on a single staff, featuring a treble clef and a 4/4 time signature. Includes a fermata over a note and a *pp* dynamic marking.

Handwritten musical notation on a single staff, featuring a treble clef and a 4/4 time signature. The notes are mostly quarter and eighth notes.

Handwritten musical notation on a single staff, featuring a treble clef and a 4/4 time signature. Includes a fermata over a note and a *pp* dynamic marking.

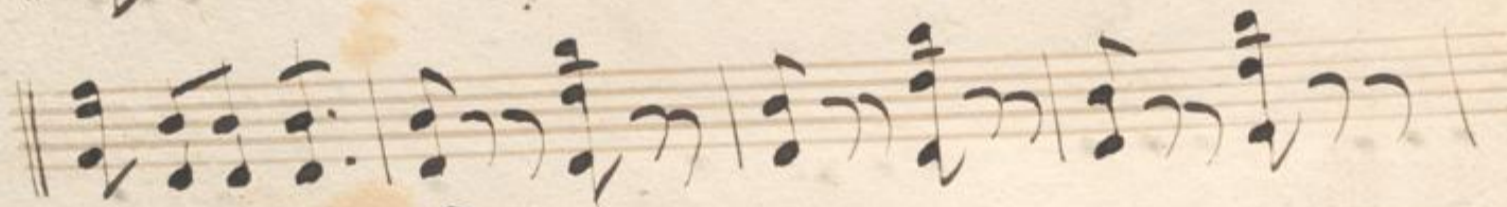
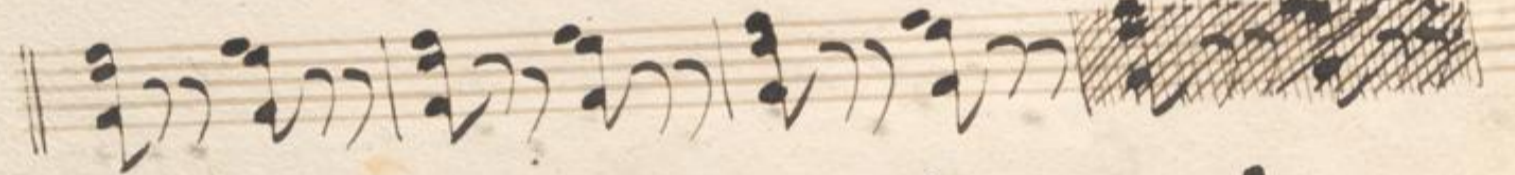
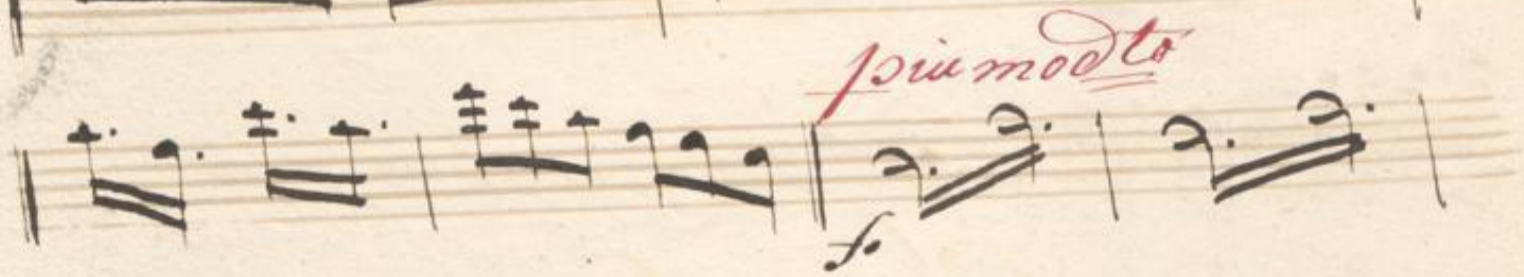
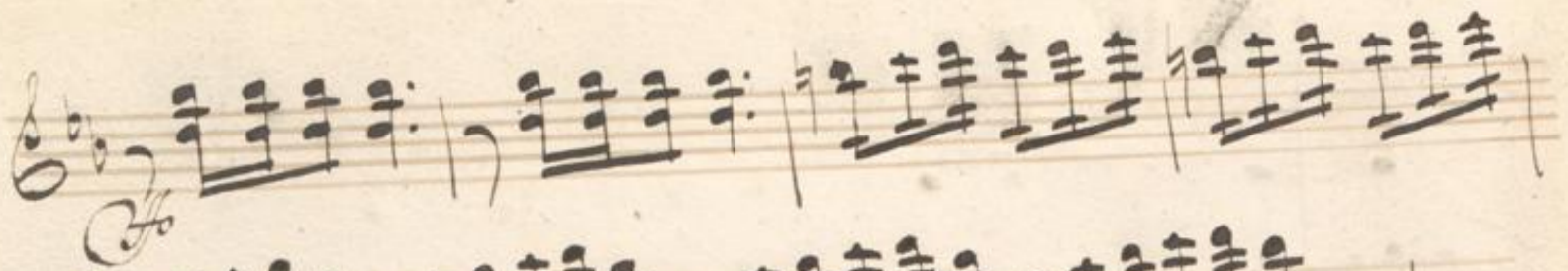
Handwritten musical notation on a single staff, featuring a treble clef and a 4/4 time signature. The notes are mostly quarter and eighth notes.

Handwritten musical notation on a single staff, featuring a treble clef and a 4/4 time signature. The notes are mostly quarter and eighth notes.

Handwritten musical notation on a single staff, featuring a treble clef and a 4/4 time signature. Includes a *pp* dynamic marking.

Handwritten musical notation on a single staff, featuring a treble clef and a 4/4 time signature. Ends with a double bar line and a signature.





No: 10.

Ouverture

Violino 2do  
1.

*Overture*  
*Das Concert am Hofe.*  
*Violino Secondo*

*Andrino*

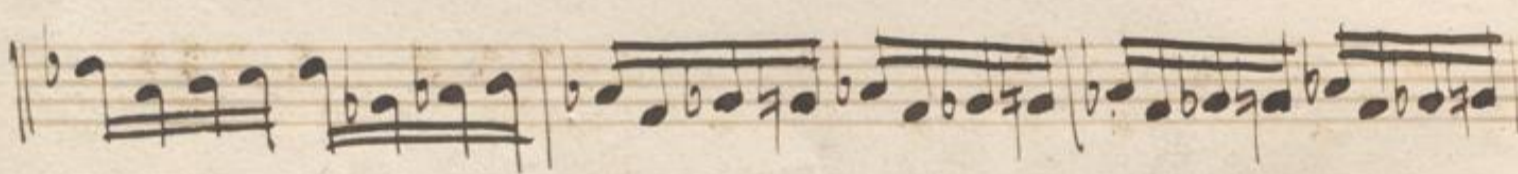
*Con moto* 

*33.*  
*piu:* 

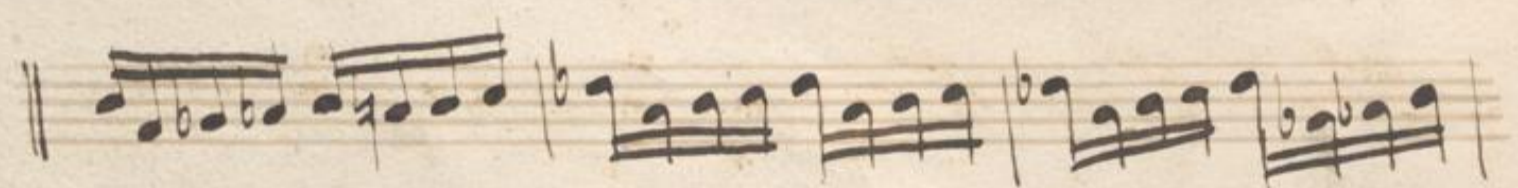


*Staccata*  
*arco* 



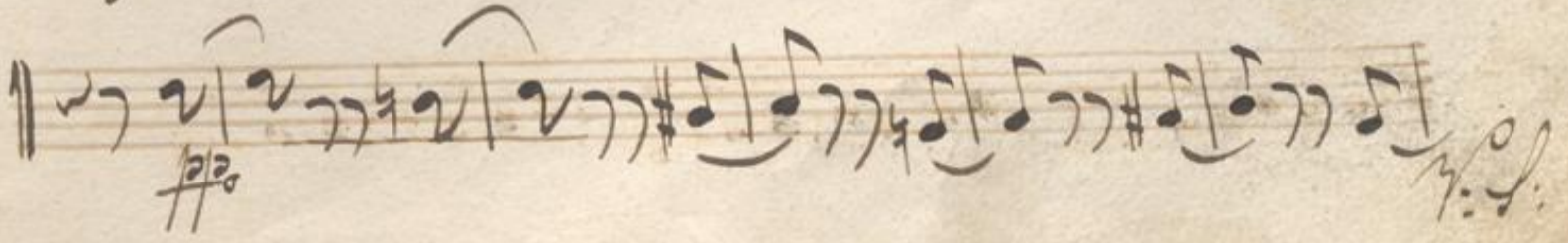
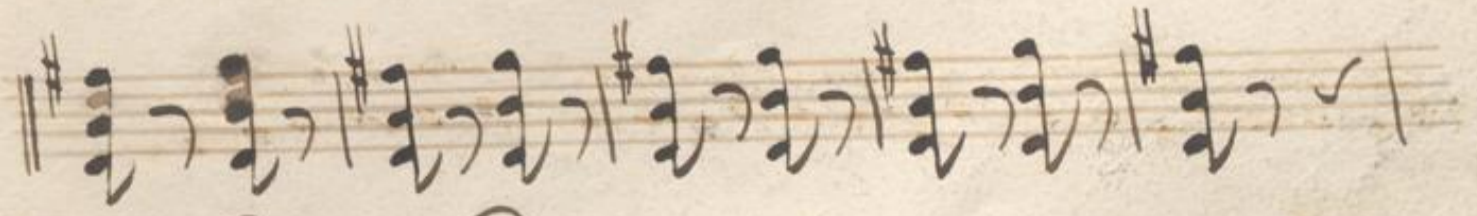
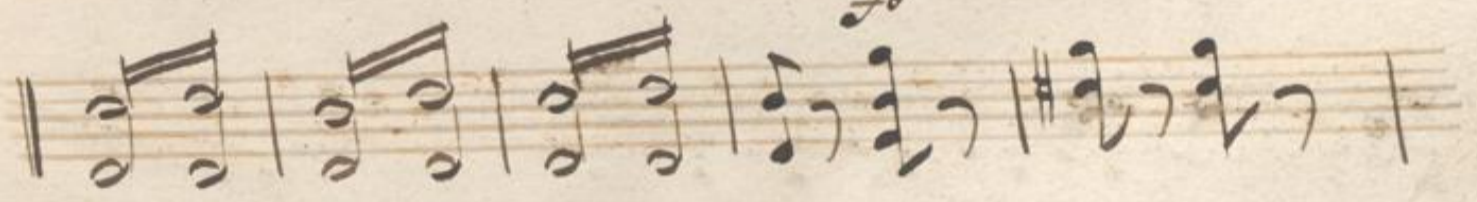
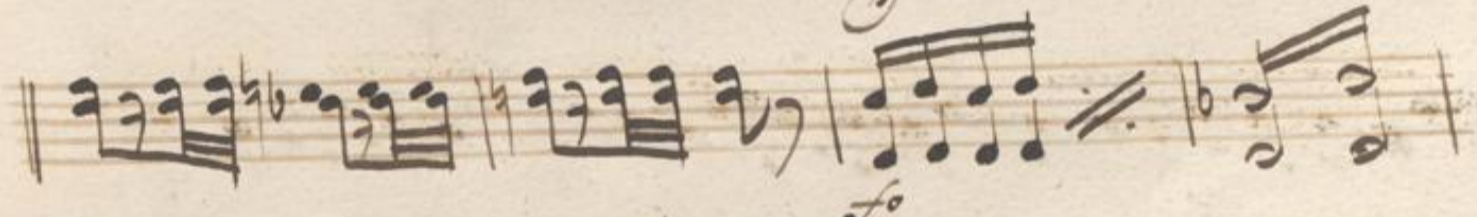
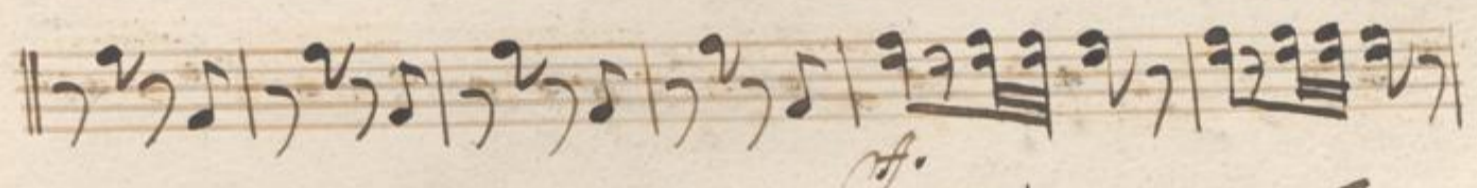
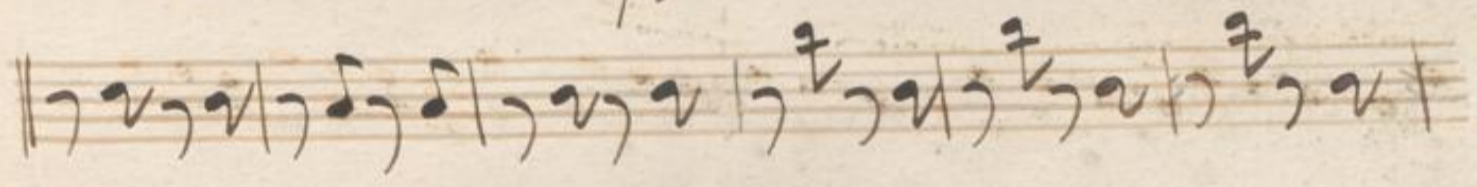
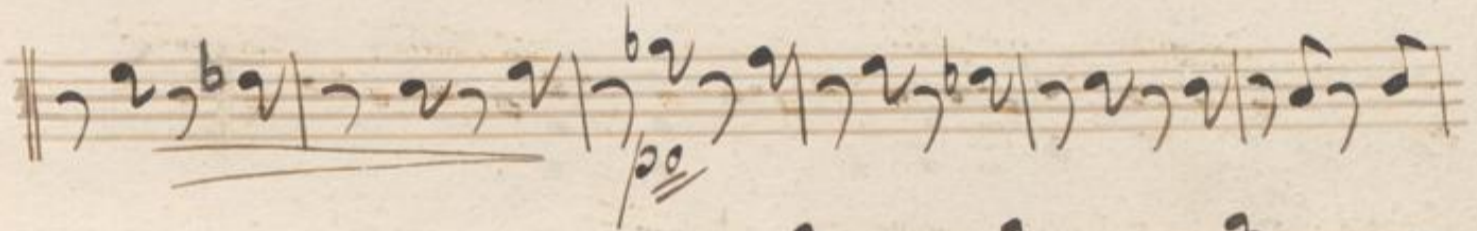
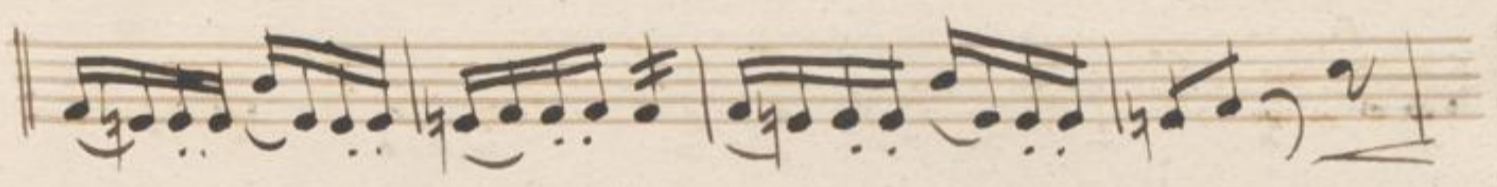
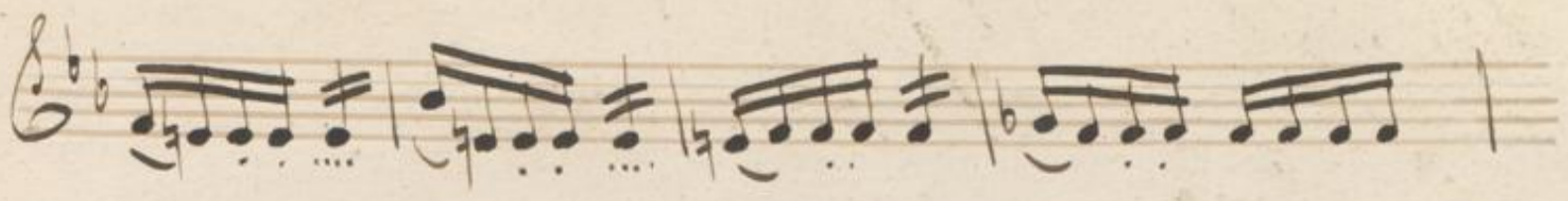




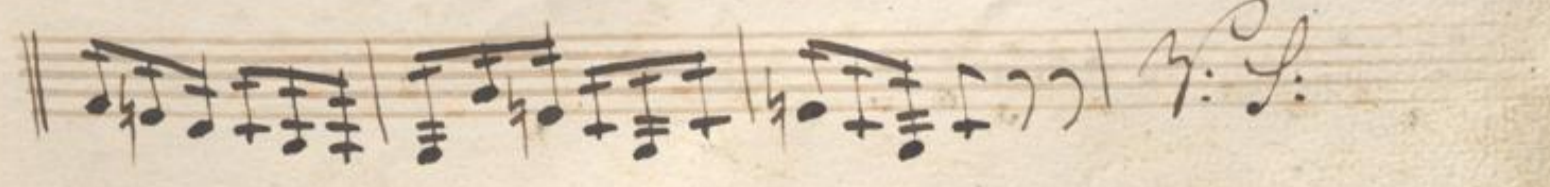
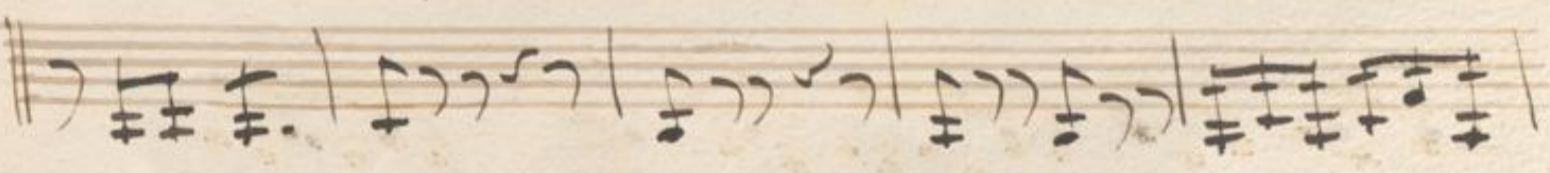
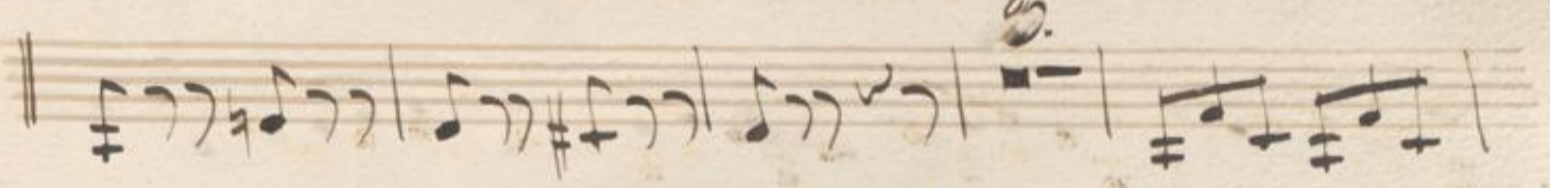
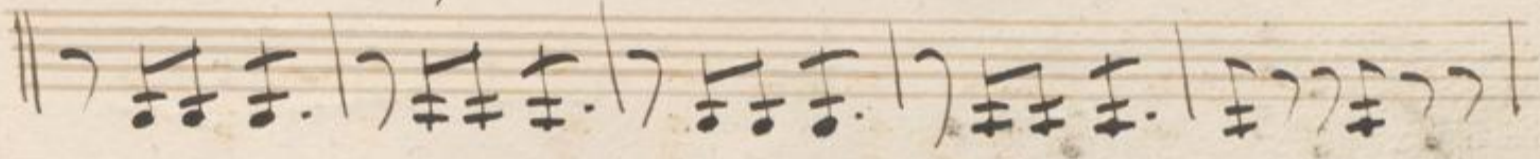








Handwritten musical score on page 50, featuring multiple staves of music. The notation includes various rhythmic values, accidentals, and dynamic markings. Key annotations in red ink include "Allegretto" and "arco" on the second staff, and "pizz." (pizzicato) on the first and fifth staves. The music is written in a cursive, historical style.



Handwritten musical score on page 52, featuring ten staves of music. The notation includes various note values, rests, and dynamic markings such as *p* and *f*. The music is written in a historical style, likely from the 18th or 19th century. The first staff begins with a treble clef and a key signature of one sharp (F#). The score consists of ten staves of music, with some staves containing multiple systems of notes. The handwriting is clear and legible.

Handwritten musical score on ten staves. The notation includes various note values, rests, and dynamic markings such as 'p' and 'f'. The music is written in a historical style with a treble clef and a key signature of one flat. The score features several measures with rests and some measures with multiple notes beamed together. The handwriting is clear and legible.

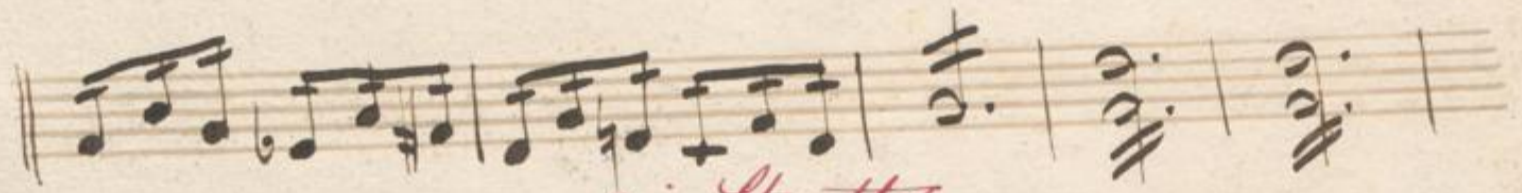




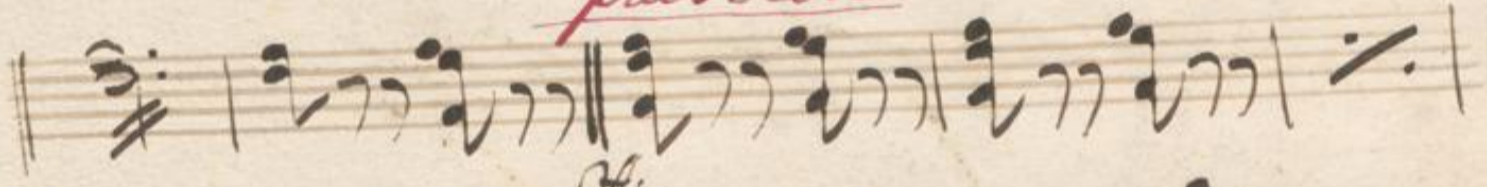
*piu modto*



*f.*



*piu Stretto.*



*f.*

