

Badische Landesbibliothek Karlsruhe

Digitale Sammlung der Badischen Landesbibliothek Karlsruhe

{Joconde - Oper - Nicolas Isouard Nr. 16}

Violine II

No: 16.

Ouverture

aus dem Oper

Yocande.

Violino secondo.

Overture
Violino secondo.

Largo

tr *for* *23.*

pp *Allo modo.* *piu*

Allo!

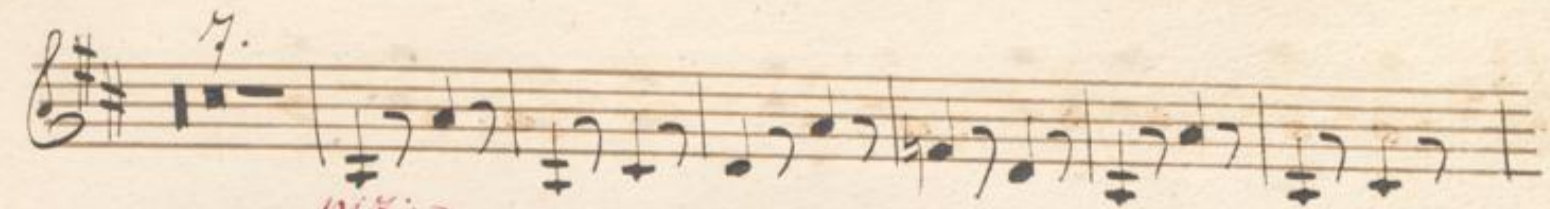
arco. *pp* *arco = = =*

ten = = = = do = = = =

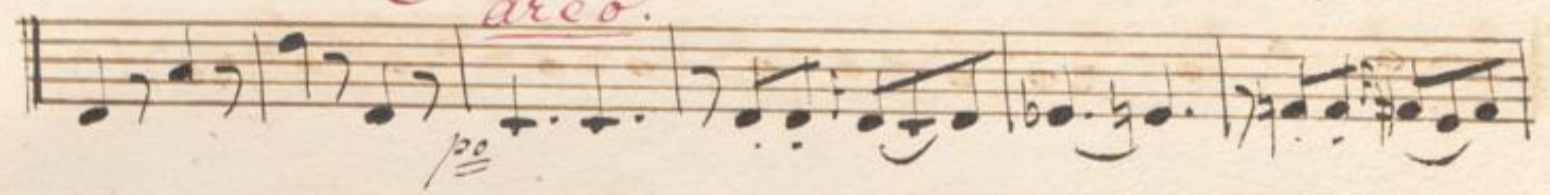
f

A handwritten musical score on ten staves. The notation includes various note values, rests, and dynamic markings such as 'f' and 'manando'. The score is written in a historical style with a treble clef and a key signature of one sharp (F#). The music features a mix of eighth and sixteenth notes, often beamed together, and includes slurs and accents. The word 'manando' is written in red ink on the eighth staff. The page number '113' is written in the top right corner.

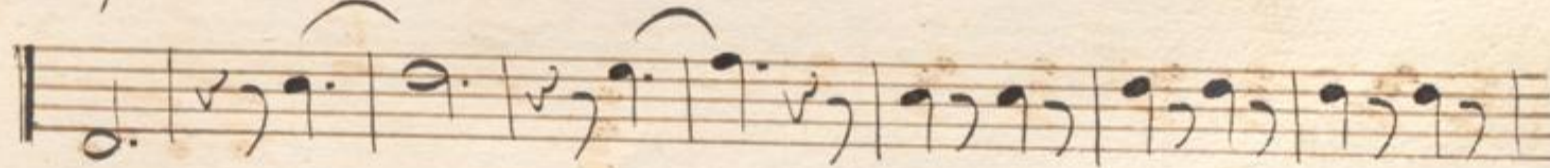
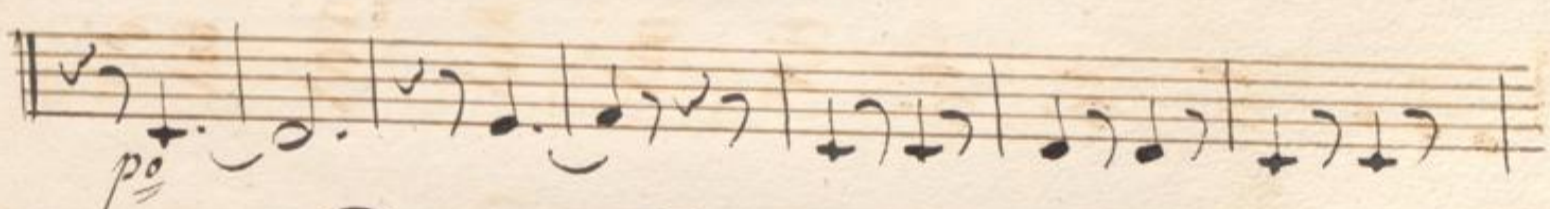
Handwritten musical score on ten staves. The notation includes treble and bass clefs, a key signature of one sharp (F#), and various rhythmic values such as eighth, sixteenth, and quarter notes. The score features melodic lines, harmonic accompaniment, and dynamic markings like "ff" and "Lotto voce". A section of the second staff is crossed out with dense black scribbles. The manuscript shows signs of age, including foxing and staining.

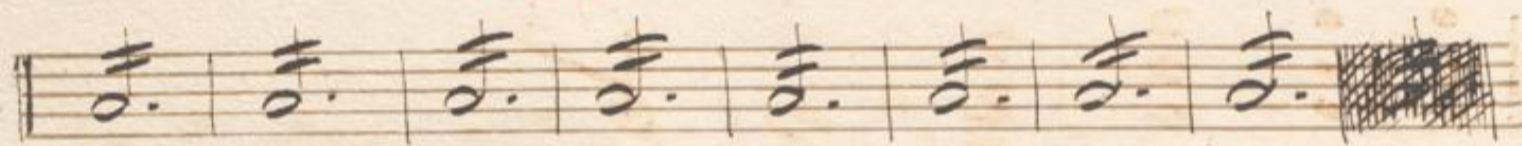


piu:
arco.

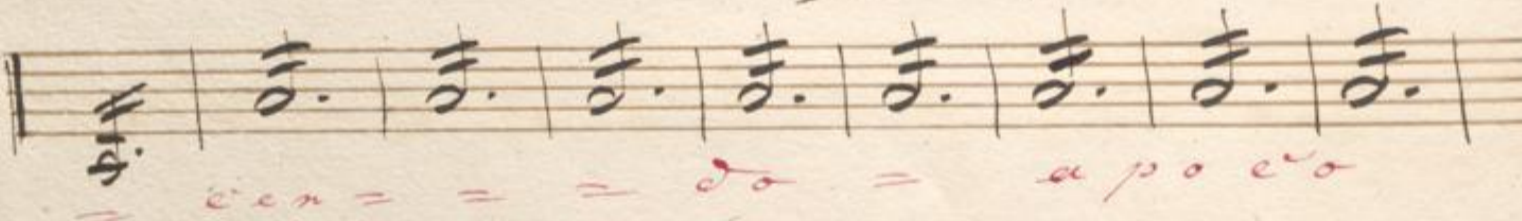
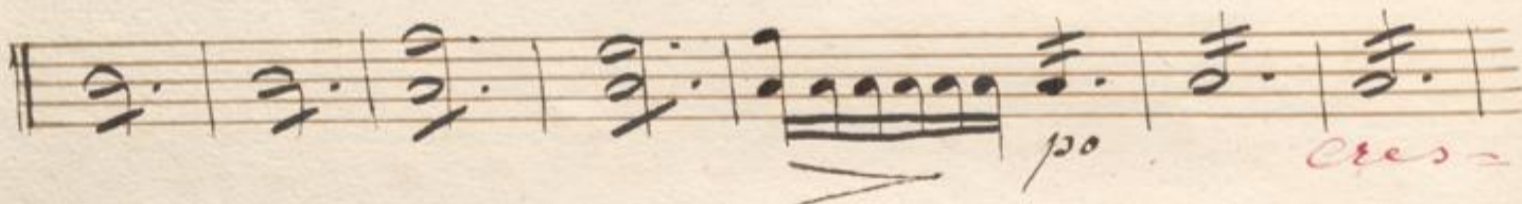
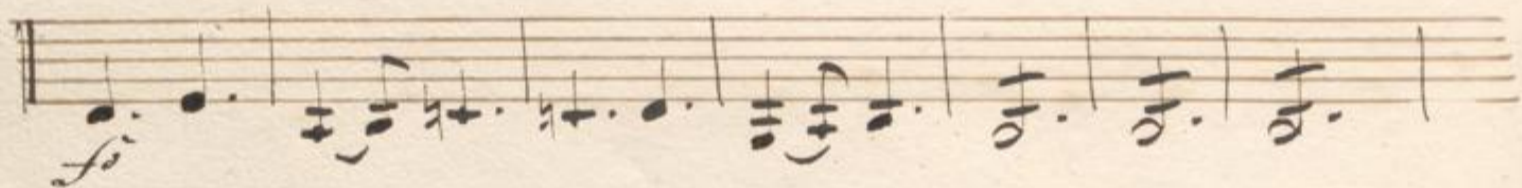


dolce

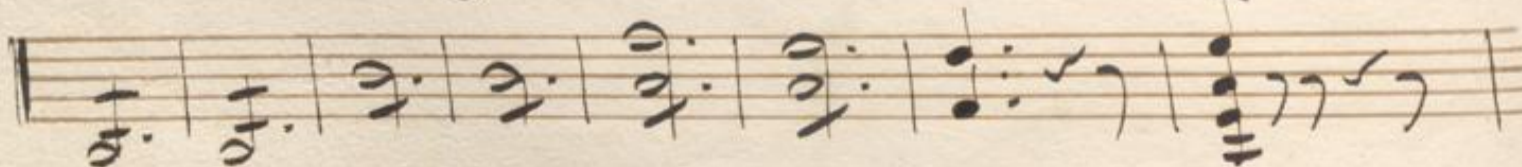
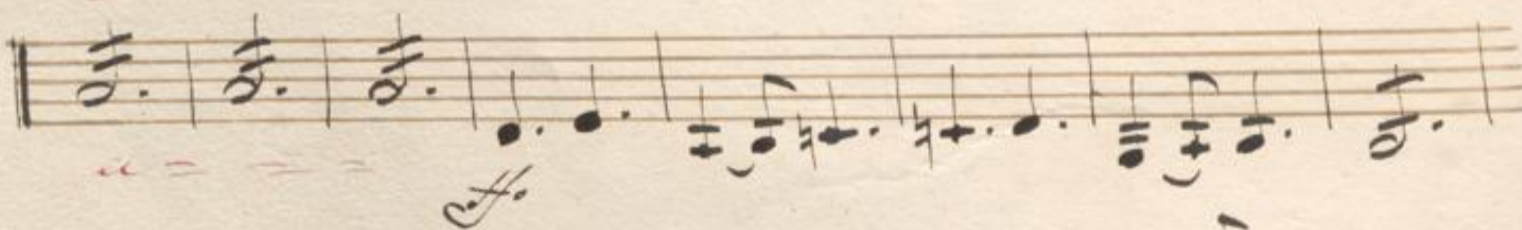




cen = = = do a poco.



cen = = = do = a poco



ff

Handwritten musical score on five staves. The first staff has a treble clef and a key signature of one sharp (F#). The second staff has a bass clef and a '3.' marking above it. The third staff has a bass clef and the word 'arco.' written in red below it. The fourth and fifth staves have treble clefs. The notation includes various note values, rests, and dynamic markings.

Six empty musical staves on the page, showing the five-line structure without any notation.

No. 16.

VIOLINO 2^{do}

2.
OUVERTURE
de JOCONDE

Largo

Allo. moderato
oboe. solo

pizz

All.^o

f *cres* *f* *f*

dol

f

f

VIOLINO 2^{do}

5.

Handwritten musical score for Violino 2^{do}, page 83. The score consists of 14 staves of music in G major (one sharp) and 2/4 time. The notation includes various dynamics and performance instructions:

- Staff 1: *sotto voce*, *pp*, *tr*
- Staff 2: *sotto voce*, *f*
- Staff 3: *ff*, *dol*, *p*
- Staff 4: *arco*, *p*, *cres*
- Staff 5: *dol*, *f*
- Staff 6: *dol*
- Staff 7: *p*
- Staff 8: *tr*, *crescendo*
- Staff 9: *dol*, *crescendo*, *f*, *1*, *2*, *3*, *4*, *5*, *6*, *7*, *8*
- Staff 10: *f*, *crescendo*, *f*, *10*, *11*
- Staff 11: *crescendo*, *f*, *1*, *2*, *3*, *4*, *5*, *6*, *7*, *8*, *9*, *10*, *11*, *12*, *13*, *14*, *15*, *16*, *17*, *18*, *19*, *20*, *21*, *22*, *23*, *24*, *25*, *26*, *27*, *28*, *29*, *30*, *31*, *32*, *33*, *34*, *35*, *36*, *37*, *38*, *39*, *40*, *41*, *42*, *43*, *44*, *45*, *46*, *47*, *48*, *49*, *50*, *51*, *52*, *53*, *54*, *55*, *56*, *57*, *58*, *59*, *60*, *61*, *62*, *63*, *64*, *65*, *66*, *67*, *68*, *69*, *70*, *71*, *72*, *73*, *74*, *75*, *76*, *77*, *78*, *79*, *80*, *81*, *82*, *83*, *84*, *85*, *86*, *87*, *88*, *89*, *90*, *91*, *92*, *93*, *94*, *95*, *96*, *97*, *98*, *99*, *100*, *101*, *102*, *103*, *104*, *105*, *106*, *107*, *108*, *109*, *110*, *111*, *112*, *113*, *114*, *115*, *116*, *117*, *118*, *119*, *120*, *121*, *122*, *123*, *124*, *125*, *126*, *127*, *128*, *129*, *130*, *131*, *132*, *133*, *134*, *135*, *136*, *137*, *138*, *139*, *140*, *141*, *142*, *143*, *144*, *145*, *146*, *147*, *148*, *149*, *150*, *151*, *152*, *153*, *154*, *155*, *156*, *157*, *158*, *159*, *160*, *161*, *162*, *163*, *164*, *165*, *166*, *167*, *168*, *169*, *170*, *171*, *172*, *173*, *174*, *175*, *176*, *177*, *178*, *179*, *180*, *181*, *182*, *183*, *184*, *185*, *186*, *187*, *188*, *189*, *190*, *191*, *192*, *193*, *194*, *195*, *196*, *197*, *198*, *199*, *200*, *201*, *202*, *203*, *204*, *205*, *206*, *207*, *208*, *209*, *210*, *211*, *212*, *213*, *214*, *215*, *216*, *217*, *218*, *219*, *220*, *221*, *222*, *223*, *224*, *225*, *226*, *227*, *228*, *229*, *230*, *231*, *232*, *233*, *234*, *235*, *236*, *237*, *238*, *239*, *240*, *241*, *242*, *243*, *244*, *245*, *246*, *247*, *248*, *249*, *250*, *251*, *252*, *253*, *254*, *255*, *256*, *257*, *258*, *259*, *260*, *261*, *262*, *263*, *264*, *265*, *266*, *267*, *268*, *269*, *270*, *271*, *272*, *273*, *274*, *275*, *276*, *277*, *278*, *279*, *280*, *281*, *282*, *283*, *284*, *285*, *286*, *287*, *288*, *289*, *290*, *291*, *292*, *293*, *294*, *295*, *296*, *297*, *298*, *299*, *300*, *301*, *302*, *303*, *304*, *305*, *306*, *307*, *308*, *309*, *310*, *311*, *312*, *313*, *314*, *315*, *316*, *317*, *318*, *319*, *320*, *321*, *322*, *323*, *324*, *325*, *326*, *327*, *328*, *329*, *330*, *331*, *332*, *333*, *334*, *335*, *336*, *337*, *338*, *339*, *340*, *341*, *342*, *343*, *344*, *345*, *346*, *347*, *348*, *349*, *350*, *351*, *352*, *353*, *354*, *355*, *356*, *357*, *358*, *359*, *360*, *361*, *362*, *363*, *364*, *365*, *366*, *367*, *368*, *369*, *370*, *371*, *372*, *373*, *374*, *375*, *376*, *377*, *378*, *379*, *380*, *381*, *382*, *383*, *384*, *385*, *386*, *387*, *388*, *389*, *390*, *391*, *392*, *393*, *394*, *395*, *396*, *397*, *398*, *399*, *400*, *401*, *402*, *403*, *404*, *405*, *406*, *407*, *408*, *409*, *410*, *411*, *412*, *413*, *414*, *415*, *416*, *417*, *418*, *419*, *420*, *421*, *422*, *423*, *424*, *425*, *426*, *427*, *428*, *429*, *430*, *431*, *432*, *433*, *434*, *435*, *436*, *437*, *438*, *439*, *440*, *441*, *442*, *443*, *444*, *445*, *446*, *447*, *448*, *449*, *450*, *451*, *452*, *453*, *454*, *455*, *456*, *457*, *458*, *459*, *460*, *461*, *462*, *463*, *464*, *465*, *466*, *467*, *468*, *469*, *470*, *471*, *472*, *473*, *474*, *475*, *476*, *477*, *478*, *479*, *480*, *481*, *482*, *483*, *484*, *485*, *486*, *487*, *488*, *489*, *490*, *491*, *492*, *493*, *494*, *495*, *496*, *497*, *498*, *499*, *500*, *501*, *502*, *503*, *504*, *505*, *506*, *507*, *508*, *509*, *510*, *511*, *512*, *513*, *514*, *515*, *516*, *517*, *518*, *519*, *520*, *521*, *522*, *523*, *524*, *525*, *526*, *527*, *528*, *529*, *530*, *531*, *532*, *533*, *534*, *535*, *536*, *537*, *538*, *539*, *540*, *541*, *542*, *543*, *544*, *545*, *546*, *547*, *548*, *549*, *550*, *551*, *552*, *553*, *554*, *555*, *556*, *557*, *558*, *559*, *560*, *561*, *562*, *563*, *564*, *565*, *566*, *567*, *568*, *569*, *570*, *571*, *572*, *573*, *574*, *575*, *576*, *577*, *578*, *579*, *580*, *581*, *582*, *583*, *584*, *585*, *586*, *587*, *588*, *589*, *590*, *591*, *592*, *593*, *594*, *595*, *596*, *597*, *598*, *599*, *600*, *601*, *602*, *603*, *604*, *605*, *606*, *607*, *608*, *609*, *610*, *611*, *612*, *613*, *614*, *615*, *616*, *617*, *618*, *619*, *620*, *621*, *622*, *623*, *624*, *625*, *626*, *627*, *628*, *629*, *630*, *631*, *632*, *633*, *634*, *635*, *636*, *637*, *638*, *639*, *640*, *641*, *642*, *643*, *644*, *645*, *646*, *647*, *648*, *649*, *650*, *651*, *652*, *653*, *654*, *655*, *656*, *657*, *658*, *659*, *660*, *661*, *662*, *663*, *664*, *665*, *666*, *667*, *668*, *669*, *670*, *671*, *672*, *673*, *674*, *675*, *676*, *677*, *678*, *679*, *680*, *681*, *682*, *683*, *684*, *685*, *686*, *687*, *688*, *689*, *690*, *691*, *692*, *693*, *694*, *695*, *696*, *697*, *698*, *699*, *700*, *701*, *702*, *703*, *704*, *705*, *706*, *707*, *708*, *709*, *710*, *711*, *712*, *713*, *714*, *715*, *716*, *717*, *718*, *719*, *720*, *721*, *722*, *723*, *724*, *725*, *726*, *727*, *728*, *729*, *730*, *731*, *732*, *733*, *734*, *735*, *736*, *737*, *738*, *739*, *740*, *741*, *742*, *743*, *744*, *745*, *746*, *747*, *748*, *749*, *750*, *751*, *752*, *753*, *754*, *755*, *756*, *757*, *758*, *759*, *760*, *761*, *762*, *763*, *764*, *765*, *766*, *767*, *768*, *769*, *770*, *771*, *772*, *773*, *774*, *775*, *776*, *777*, *778*, *779*, *780*, *781*, *782*, *783*, *784*, *785*, *786*, *787*, *788*, *789*, *790*, *791*, *792*, *793*, *794*, *795*, *796*, *797*, *798*, *799*, *800*, *801*, *802*, *803*, *804*, *805*, *806*, *807*, *808*, *809*, *810*, *811*, *812*, *813*, *814*, *815*, *816*, *817*, *818*, *819*, *820*, *821*, *822*, *823*, *824*, *825*, *826*, *827*, *828*, *829*, *830*, *831*, *832*, *833*, *834*, *835*, *836*, *837*, *838*, *839*, *840*, *841*, *842*, *843*, *844*, *845*, *846*, *847*, *848*, *849*, *850*, *851*, *852*, *853*, *854*, *855*, *856*, *857*, *858*, *859*, *860*, *861*, *862*, *863*, *864*, *865*, *866*, *867*, *868*, *869*, *870*, *871*, *872*, *873*, *874*, *875*, *876*, *877*, *878*, *879*, *880*, *881*, *882*, *883*, *884*, *885*, *886*, *887*, *888*, *889*, *890*, *891*, *892*, *893*, *894*, *895*, *896*, *897*, *898*, *899*, *900*, *901*, *902*, *903*, *904*, *905*, *906*, *907*, *908*, *909*, *910*, *911*, *912*, *913*, *914*, *915*, *916*, *917*, *918*, *919*, *920*, *921*, *922*, *923*, *924*, *925*, *926*, *927*, *928*, *929*, *930*, *931*, *932*, *933*, *934*, *935*, *936*, *937*, *938*, *939*, *940*, *941*, *942*, *943*, *944*, *945*, *946*, *947*, *948*, *949*, *950*, *951*, *952*, *953*, *954*, *955*, *956*, *957*, *958*, *959*, *960*, *961*, *962*, *963*, *964*, *965*, *966*, *967*, *968*, *969*, *970*, *971*, *972*, *973*, *974*, *975*, *976*, *977*, *978*, *979*, *980*, *981*, *982*, *983*, *984*, *985*, *986*, *987*, *988*, *989*, *990*, *991*, *992*, *993*, *994*, *995*, *996*, *997*, *998*, *999*, *1000*

