

# **Badische Landesbibliothek Karlsruhe**

**Digitale Sammlung der Badischen Landesbibliothek Karlsruhe**

**{Ouverture Nr.20 (muss noch recherchiert werden)}**

Ouverture

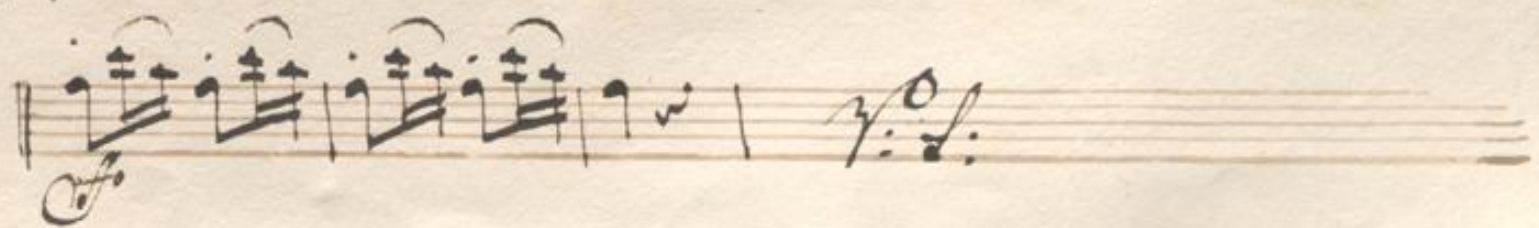
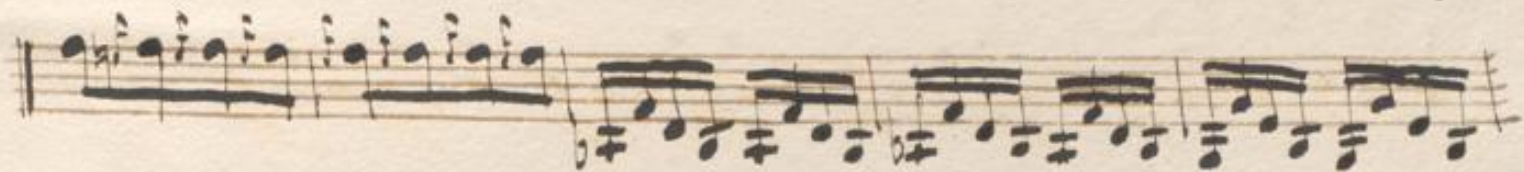
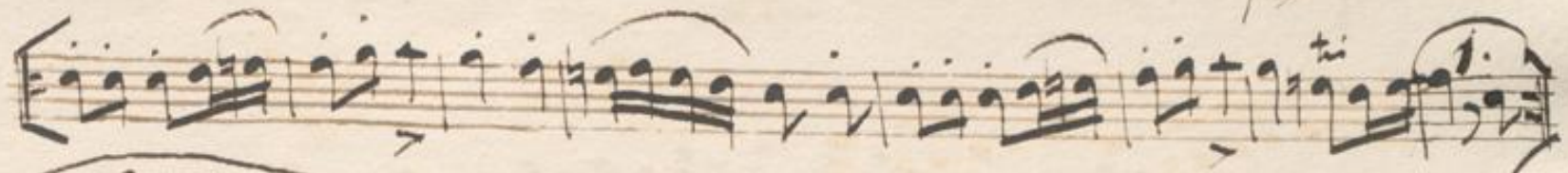


# ouverture Violino Primo

No 20

*Adagio*







A handwritten musical score on ten staves. The notation includes various note values, rests, and dynamic markings. The first staff begins with a treble clef and a key signature of one flat, followed by a *pp* marking. The second staff features a first ending bracket and a *2.* marking. The third and fourth staves contain complex, multi-measure passages with slurs and accents. The fifth staff has a *mol:* marking. The sixth staff includes a *3.* marking and a *f. pp* marking. The seventh staff starts with a first ending bracket and a *f* marking. The eighth staff continues with complex rhythmic patterns. The ninth staff has a *pp* marking. The tenth staff concludes with a first ending bracket and a *pp* marking.



Musical staff with notes and dynamic marking *fo apai*

Musical staff with notes and dynamic marking *p*

Musical staff with notes and dynamic marking *fo*

Musical staff with notes and dynamic marking *fo*

Musical staff with notes and dynamic marking *dim.*

Musical staff with notes and dynamic marking *fo*

Musical staff with notes and dynamic marking *fo*

Musical staff with notes and dynamic marking *fo*

Musical staff with notes and dynamic marking *fo*

Musical staff with notes and dynamic marking *fo*

Musical staff with notes and dynamic marking *fo*



This page contains ten staves of handwritten musical notation. The notation is dense, featuring many beamed notes and rests. The first staff begins with a treble clef and a key signature of one flat. The second staff has a dynamic marking of *f* (forte) and a *p* (piano) marking. The third staff has a *p* marking. The fourth staff has a *f* marking. The fifth staff has a *f* marking. The sixth staff has a *f* marking. The seventh staff has a *f* marking. The eighth staff has a *f* marking. The ninth staff has a *f* marking. The tenth staff has a *f* marking. The notation is written in a cursive style typical of 18th or 19th-century manuscripts.