

# **Badische Landesbibliothek Karlsruhe**

**Digitale Sammlung der Badischen Landesbibliothek Karlsruhe**

**{Ouverture Nr.28 [Nr.27] (muss noch recherchiert werden)}**

Violine I

Nr. 28.

Ouverture

von Weber

Violino 1<sup>mo</sup>

Beherrsher der Geister.

Ouverture Violino 1<sup>mo</sup>

*Presto*

*f*

*p*

*Cresc. = = cresc. = do*

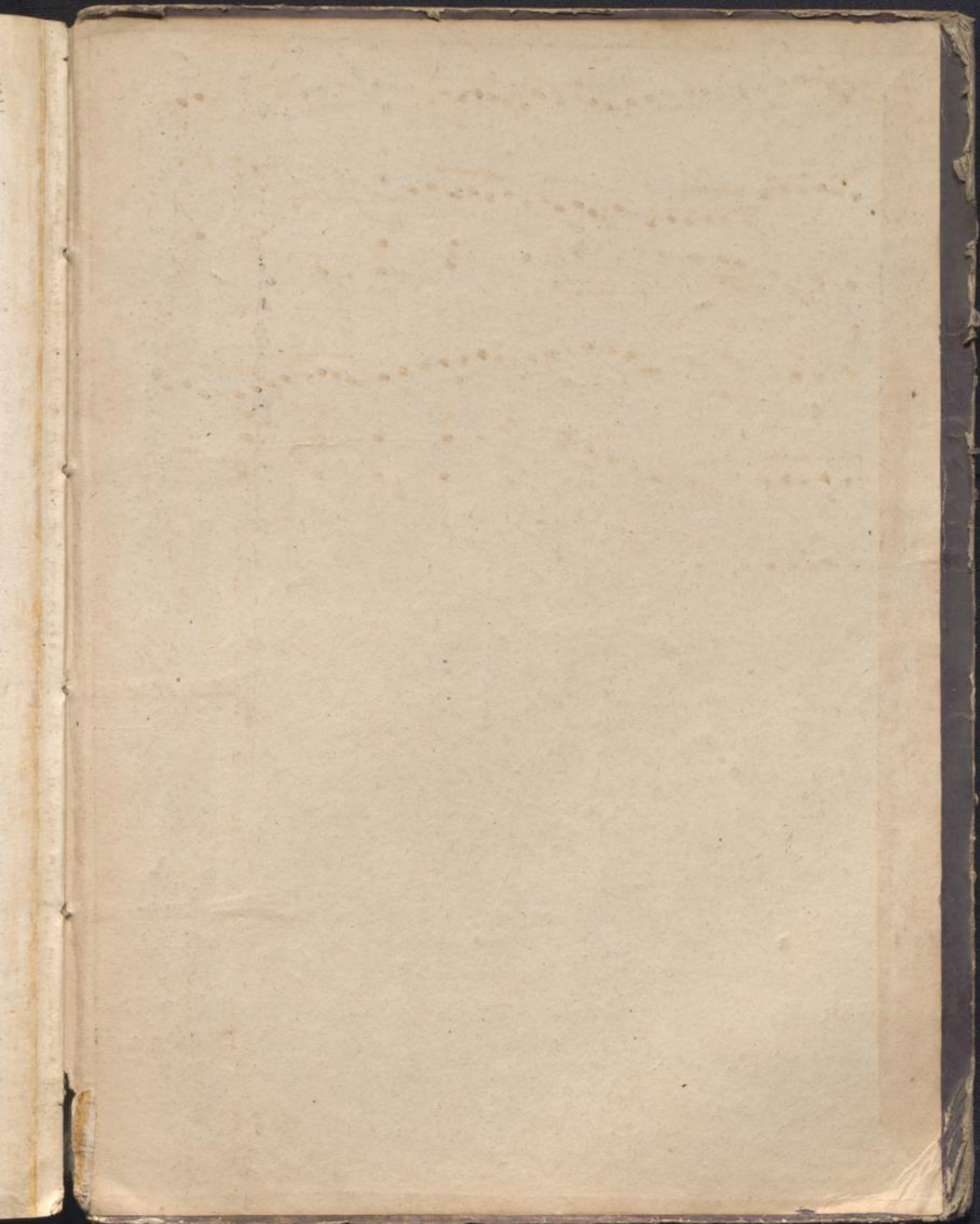
Handwritten musical score on ten staves. The notation includes various note values, rests, and dynamic markings. The first staff has a treble clef and a key signature of one sharp (F#). The score includes markings such as "trun" (trumpet), "pizz" (pizzicato), "arco" (arco), and "f. f." (fortissimo).

Handwritten musical score on page 242. The page contains approximately 14 staves of music. The notation includes various note values, rests, and clefs. There are several dynamic markings, including 'p' (piano) and 'pp' (pianissimo), scattered throughout the score. The handwriting is in dark ink on aged, slightly yellowed paper. The music appears to be a single melodic line, possibly for a flute or violin, given the use of a treble clef and the range of notes.

A handwritten musical score on 12 staves. The notation includes treble and bass clefs, a key signature of two sharps (F# and C#), and a variety of rhythmic values such as eighth, sixteenth, and thirty-second notes. The score is densely written with many slurs, ties, and dynamic markings. A measure number '16.' is written above the third staff. The manuscript shows signs of age, including some ink bleed-through from the reverse side and slight discoloration of the paper.

Handwritten musical score for a single instrument, likely a lute or guitar. The notation includes a treble clef, a key signature of one sharp (F#), and a 3/4 time signature. The music features a mix of eighth and sixteenth notes, often beamed together, and includes various ornaments and slurs. The piece concludes with a decorative flourish.

Two staves of handwritten musical notation. The upper staff contains a series of rhythmic patterns with stems and flags, possibly representing a specific style of lute or guitar playing. The lower staff contains a series of vertical lines, possibly representing a tablature or a simplified rhythmic notation.







No. 28.

173

# Duverture

de l'Opera:

Der Beherrscher der Geister

*pour*  
2 Violons, 2 Hautbois, 2 Clarinettes, Flûte,  
Flûte picc., 2 Bassons, 3 Trombones, 4 Cors,  
2 Trompettes, Timbales, Alto et Basse  
*composée*

*par*  
C. M. DE WEBER.

Op. 27.

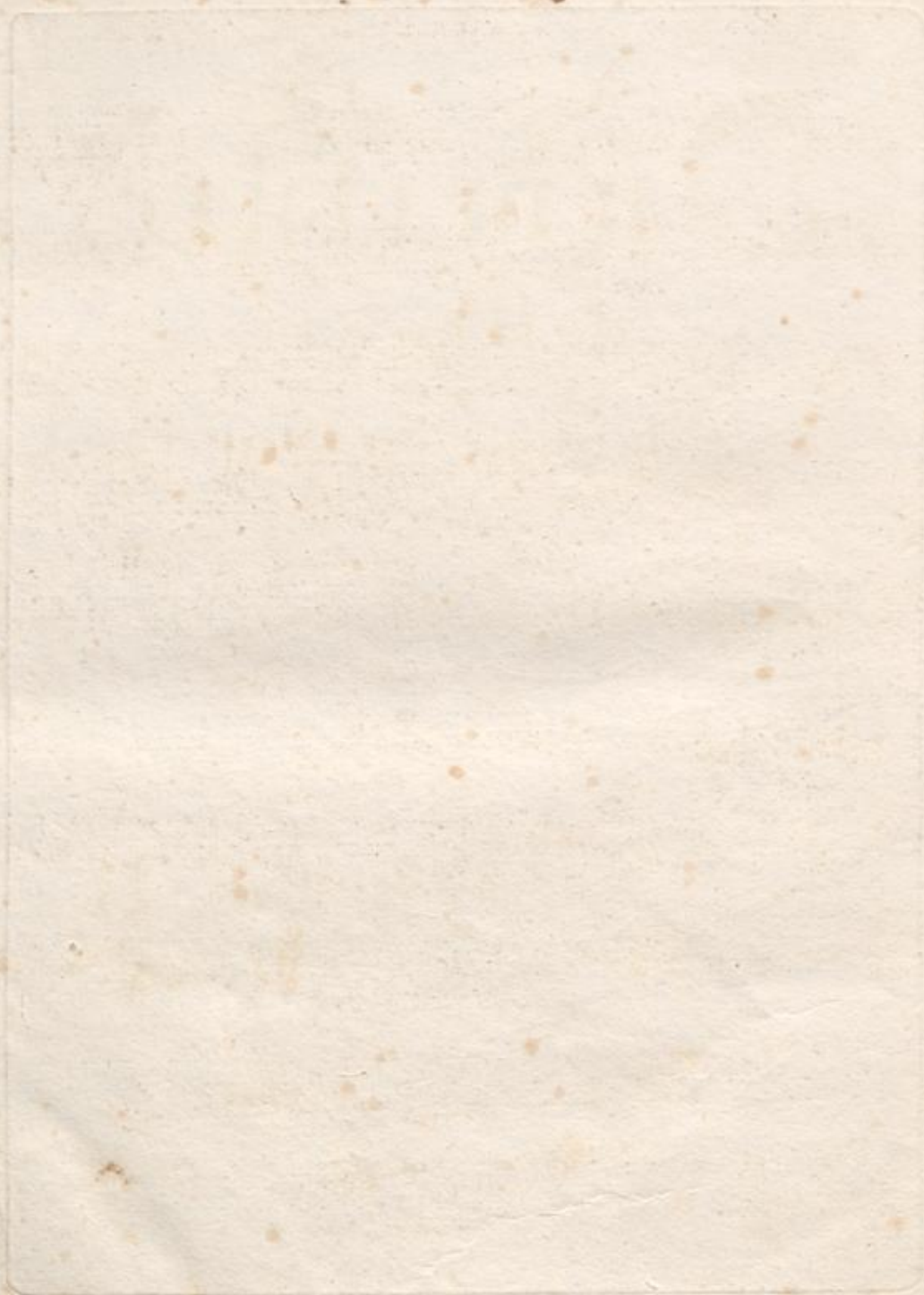
Pr. 1 Rth. 16 Gr.

A Leipzig, chez C. F. Peters,

Bureau de Musique.

174

83: 331,



VIOLINO PRIMO

Presto. Basso.

OVERTURE.

ff

Flauto.

pp

f

ff

cres

Oboe.

pp

Flauto.

6

1057

V.S.



VIOLINO PRIMO

Corno. 14

ff

pp

f

cres

f

fff

fff

FINE.

1057

178

