

Badische Landesbibliothek Karlsruhe

Digitale Sammlung der Badischen Landesbibliothek Karlsruhe

Le Colporteur. Excerpts - Don Mus.Ms.S.B.7 Nr.19

Onslow, Georges

[S.l.], 1830 (1830c)

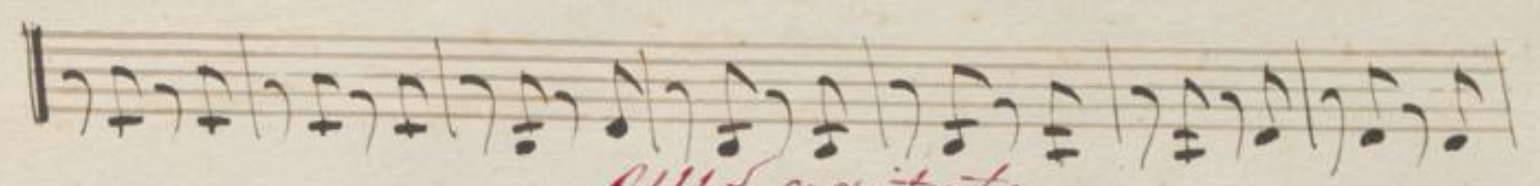
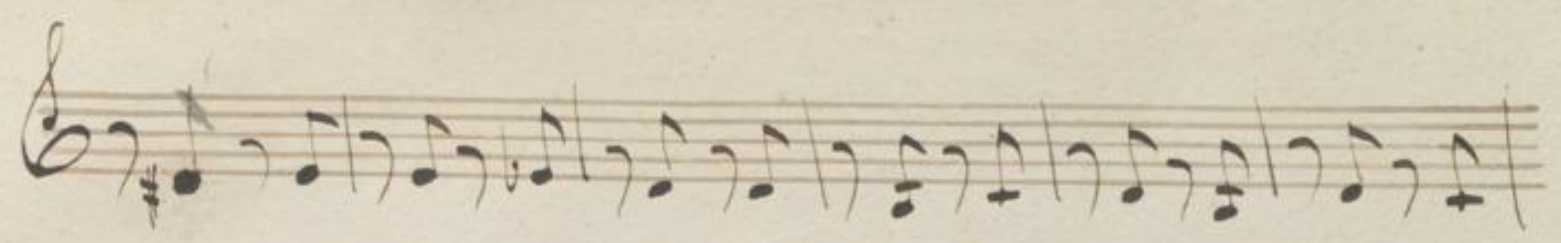
Ouverture

[urn:nbn:de:bsz:31-128281](https://nbn-resolving.org/urn:nbn:de:bsz:31-128281)

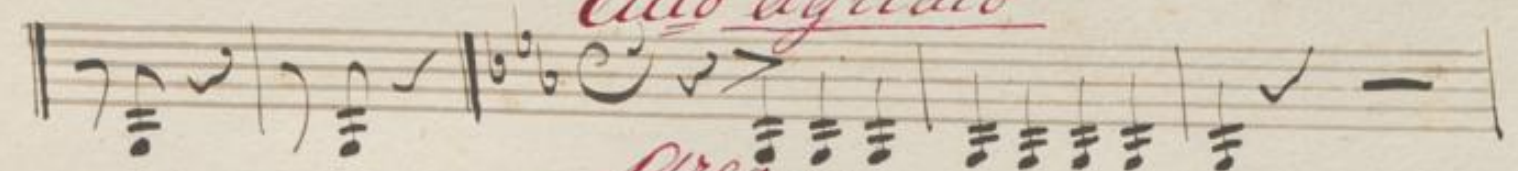
Overture Violino secondo

Andte $\frac{2}{4}$

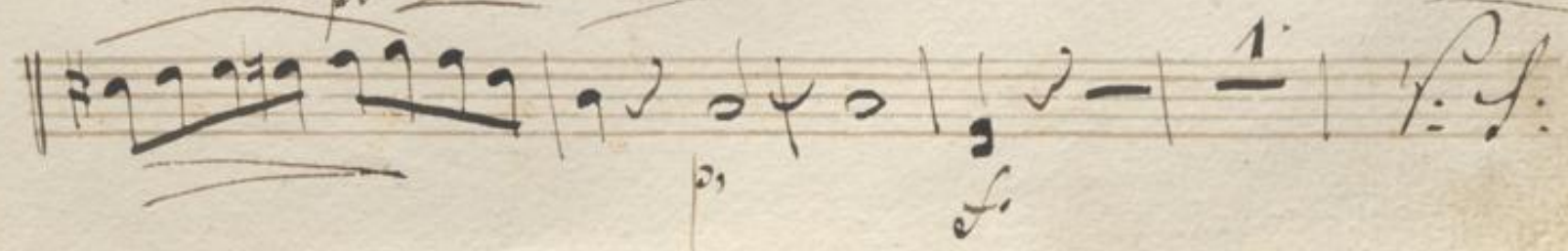
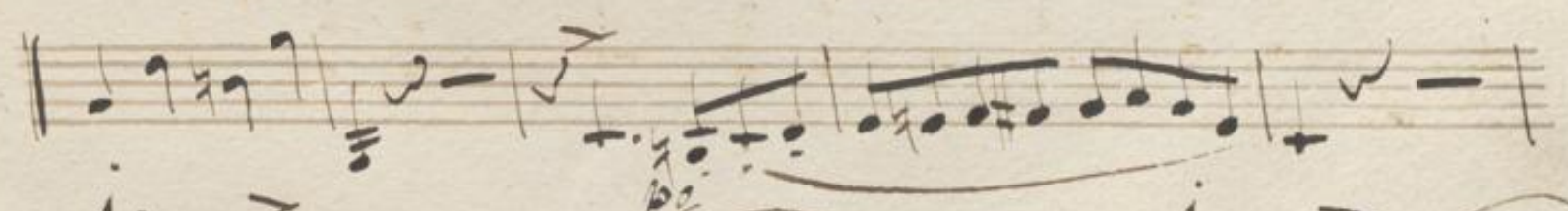
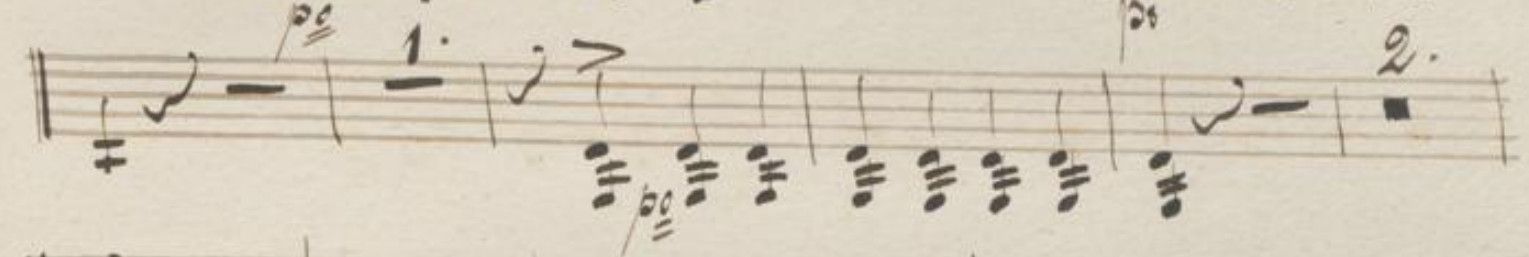
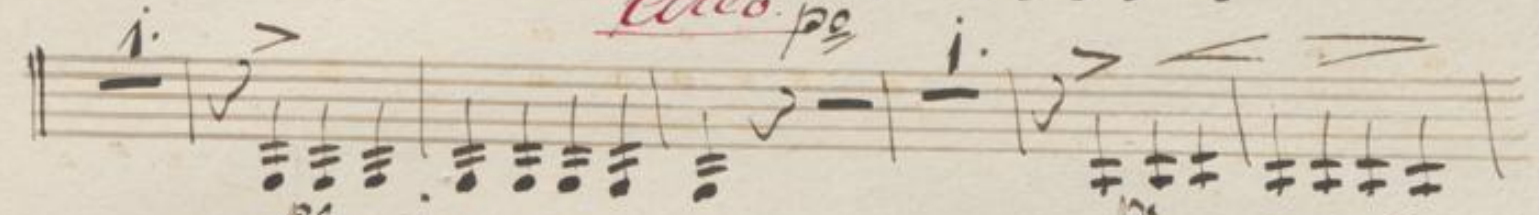
p *pp* *f* *pp* *cres.* *pizz.*



Allo agitato



Cres. p



Handwritten musical score on 12 staves. The notation includes treble clefs, various note values (quarter, eighth, sixteenth notes), rests, and dynamic markings. The score is written in black ink on aged paper.

Annotations in red ink:

- mf.* (mezzo-forte) on the third staff.
- piu:* (piu forte) on the fourth staff.
- cresc.* (crescendo) on the eleventh staff.
- ff* (fortissimo) on the twelfth staff.

A handwritten musical score on 12 staves. The notation includes various note values (quarter, eighth, sixteenth notes), rests, and dynamic markings such as *pp*, *f*, and *ppp*. The score is written in a cursive hand and includes some performance instructions like *pp* and *f*. The music appears to be a single melodic line with some accompaniment or figured bass elements. The paper is aged and shows some staining.

Handwritten musical score on ten staves. The notation includes treble and bass clefs, various note values, rests, and dynamic markings such as "pizz." and "arco.".

Handwritten musical score on ten staves. The notation includes various notes, rests, and dynamic markings such as *p*, *f*, and *piu moto*. A "4." is written above the second staff, and "piu moto" is written in red ink above the sixth staff. The piece concludes with a double bar line and a fermata on the final note of the tenth staff.

Four empty musical staves at the bottom of the page.

This image shows ten blank musical staves arranged vertically on a single page of aged, yellowish paper. Each staff consists of five horizontal lines. The paper shows signs of wear, including some foxing and a small dark spot near the center of the page. The left edge of the page is slightly ragged, indicating it is part of a bound volume.