

Badische Landesbibliothek Karlsruhe

Digitale Sammlung der Badischen Landesbibliothek Karlsruhe

{Ouverture Nr.4 (muss noch recherchiert werden)}

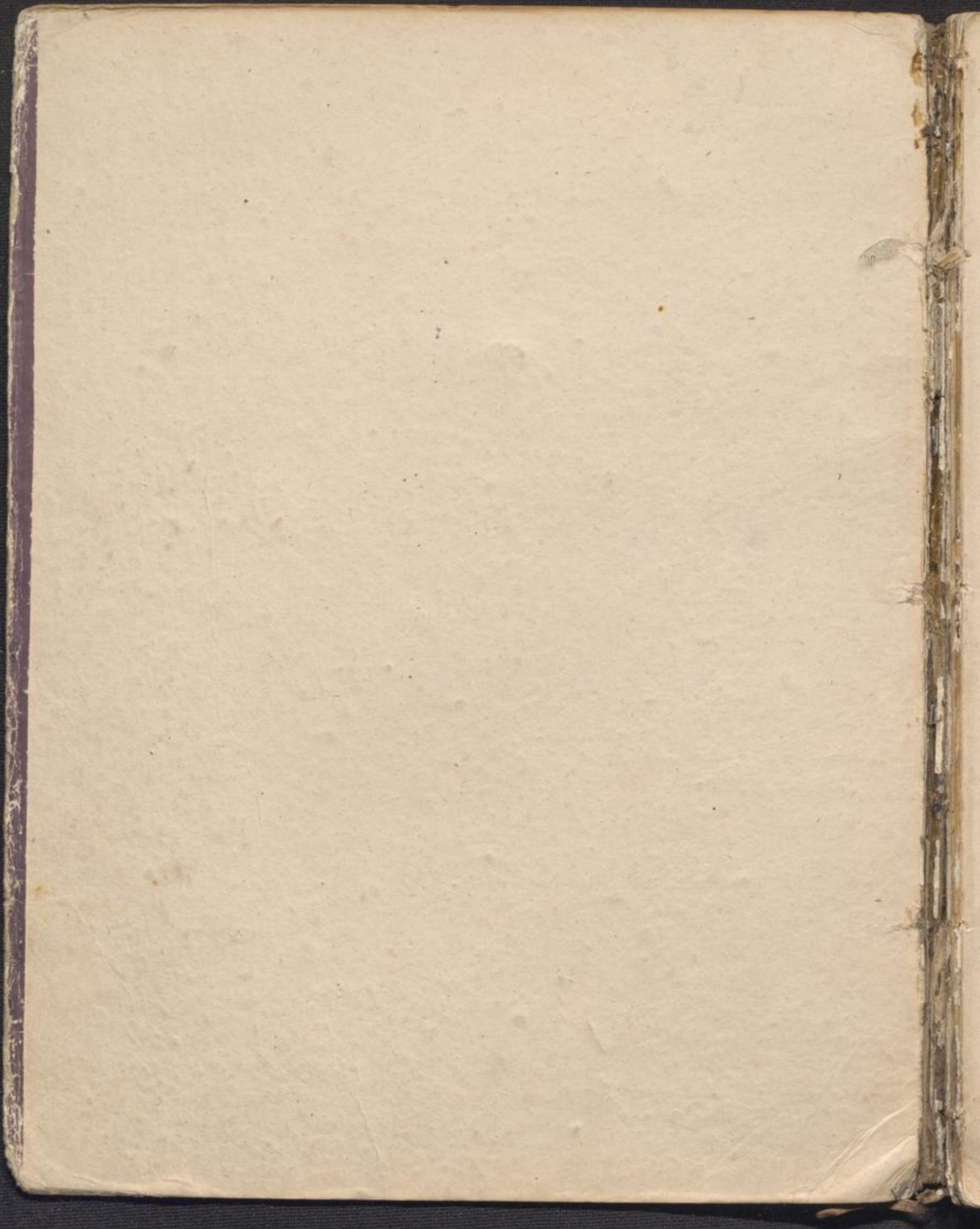
Oboe II

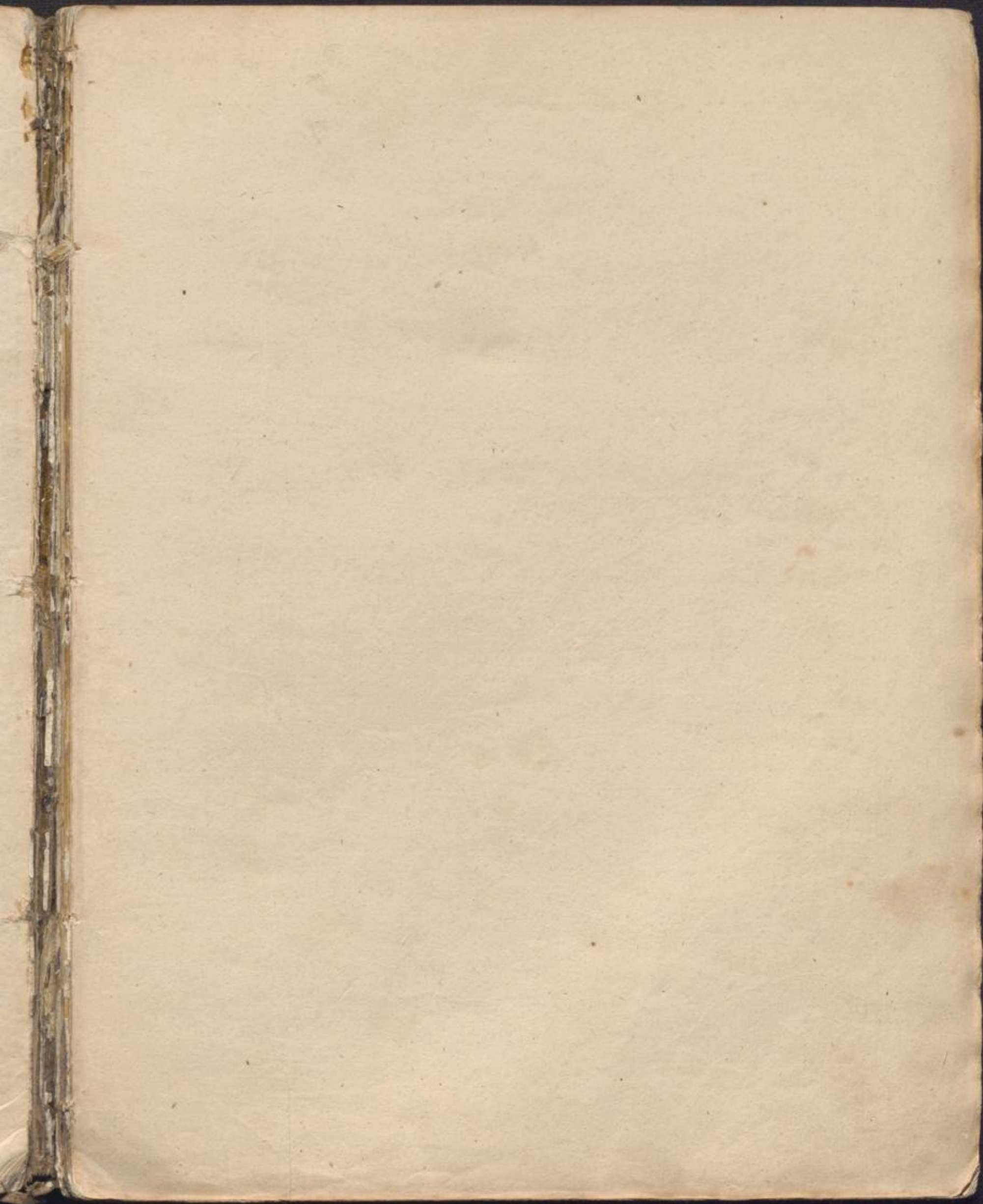
Mus. Drwk.

13.7

l

2
Couverturen.
Oboe II.^{Co.}





No. 4.

O B O E S E C O N D O .

Maestoso.

O U V E R T U R E .

Musical notation for the first section of the Overture, measures 1-12. The music is in C major and 2/4 time. It begins with a forte (ff) dynamic and features a series of sixteenth-note runs. Dynamics include sf, p, and Cres: (Crescendo). The section ends with a fermata and a repeat sign.

Musical notation for the second section of the Overture, measures 13-27. The tempo changes to All^o assai vivace. The music is in 6/8 time. It features a more rhythmic melody with accents and sf dynamics. Measure numbers 28 and 29 are indicated.

Musical notation for the third section of the Overture, measures 28-37. The music continues in 6/8 time with a driving eighth-note pattern. Dynamics include sf and sfz. Measure numbers 38 and 39 are indicated.

Musical notation for the fourth section of the Overture, measures 38-47. The music continues in 6/8 time with a driving eighth-note pattern. Dynamics include sf and sfz. Measure numbers 48 and 49 are indicated.

Musical notation for the fifth section of the Overture, measures 48-57. The music continues in 6/8 time with a driving eighth-note pattern. Dynamics include sf and sfz. Measure numbers 58 and 59 are indicated.

Musical notation for the sixth section of the Overture, measures 58-67. The music continues in 6/8 time with a driving eighth-note pattern. Dynamics include sf and sfz. Measure numbers 68 and 69 are indicated.

Musical notation for the seventh section of the Overture, measures 68-77. The music continues in 6/8 time with a driving eighth-note pattern. Dynamics include sf and sfz. Measure numbers 78 and 79 are indicated.

Musical notation for the eighth section of the Overture, measures 78-87. The music continues in 6/8 time with a driving eighth-note pattern. Dynamics include sf and sfz. Measure numbers 88 and 89 are indicated.

Musical notation for the ninth section of the Overture, measures 88-97. The music continues in 6/8 time with a driving eighth-note pattern. Dynamics include sf and sfz. Measure numbers 98 and 99 are indicated.

S. u. C. N^o 4681.

OBOE SECONDO.

The musical score for Oboe Secondo consists of 12 staves of music. The notation includes various dynamics such as *F*, *p*, *pp*, *sF*, and *ff*. Performance markings include accents, slurs, and specific fingerings (e.g., 3, 2, 15, 5, 9 K-6, 9 O-10). The score is written in a single system with a treble clef and a common time signature.

S. u. C. N^o 4681.

O B O E S E C O N D O .

The musical score for Oboe Secondo on page 3 contains the following elements:

- Staff 1:** Dynamics *f*, *f*, *f*, *sf*, *sf*, *f*, *f*.
- Staff 2:** Dynamics *f*, *f*, *f*, *sf*, *sf*, *sf*.
- Staff 3:** Dynamics *sf*, *sf*, *sf*, *sf*, *3R-9*, *ff*, *sf*. Includes a fermata and a *Q* (Quasi) marking.
- Staff 4:** Dynamics *Dimin*, *pp*, *Cres*, *ff*. Includes a *S* (Sordano) marking.
- Staff 5:** Dynamics *sf*, *Dimin*, *pp*, *Cres*.
- Staff 6:** Dynamics *ff*, *sf*, *sf*, *sf*. Includes a *tenu:* (tenuis) marking.
- Staff 7:** Dynamics *sf*.
- Staff 8:** Dynamics *sf*, *ff*, *sf*.
- Staff 9:** Dynamics *sf*, *sf*, *f*, *f*, *f*, *f*, *f*, *f*, *f*, *f*, *f*, *f*.
- Staff 10:** Dynamics *f*, *f*, *sf*.
- Staff 11:** Dynamics *sf*, *fff*. Includes a *V* (Vibrato) marking.

S. u. C. N^o. 4684.

