

Badische Landesbibliothek Karlsruhe

Digitale Sammlung der Badischen Landesbibliothek Karlsruhe

{Nr. 24}

Violoncello & Bass [2. Exemplar]

A page of handwritten musical notation on aged paper. The page contains 15 horizontal staves, each consisting of five lines. The notation is written in dark ink and includes various note heads, stems, and beams. The notes are arranged in a sequence across the staves, with some notes beamed together. The paper shows signs of age, including some staining and discoloration. The title 'No. 24.' is written in a cursive hand at the top right and is underlined.

24. *Violoncello et Basso.*
Overture.

Andte con moto.

The first system consists of two staves. The upper staff is for Cello and the lower for Bass. Both are in C major and 2/4 time. The music begins with a piano (*pp*) dynamic. The first measure contains a half note chord (C4, E4, G4) in both parts. The second measure has a half note chord (F4, A4, C5) in the Cello part and a half note chord (C4, E4, G4) in the Bass part. The third and fourth measures each contain a half note chord (G4, B4, D5) in the Cello part and a half note chord (C4, E4, G4) in the Bass part.

The second system continues the piece. The upper staff has a *Solo.* marking above the first measure. The first measure has a half note chord (C4, E4, G4) in the Cello part and a half note chord (C4, E4, G4) in the Bass part. The second measure has a half note chord (F4, A4, C5) in the Cello part and a half note chord (C4, E4, G4) in the Bass part. The third measure has a half note chord (G4, B4, D5) in the Cello part and a half note chord (C4, E4, G4) in the Bass part. The fourth measure has a half note chord (C4, E4, G4) in the Cello part and a half note chord (C4, E4, G4) in the Bass part.

The third system features a more active Cello part. The upper staff has a series of eighth notes: C4, E4, G4, A4, B4, C5, B4, A4, G4, F4, E4, D4. The lower staff has a half note chord (C4, E4, G4) in the first measure, followed by a half note chord (F4, A4, C5) in the second measure, and a half note chord (G4, B4, D5) in the third measure.

The fourth system continues the Cello's melodic line. The upper staff has a series of eighth notes: C4, E4, G4, A4, B4, C5, B4, A4, G4, F4, E4, D4. The lower staff has a half note chord (C4, E4, G4) in the first measure, followed by a half note chord (F4, A4, C5) in the second measure, and a half note chord (G4, B4, D5) in the third measure.

The fifth system shows the Cello part with a series of eighth notes: C4, E4, G4, A4, B4, C5, B4, A4, G4, F4, E4, D4. The lower staff has a half note chord (C4, E4, G4) in the first measure, followed by a half note chord (F4, A4, C5) in the second measure, and a half note chord (G4, B4, D5) in the third measure.

The sixth system concludes the page. The upper staff has a half note chord (C4, E4, G4) in the first measure, followed by a half note chord (F4, A4, C5) in the second measure, and a half note chord (G4, B4, D5) in the third measure. The lower staff has a half note chord (C4, E4, G4) in the first measure, followed by a half note chord (F4, A4, C5) in the second measure, and a half note chord (G4, B4, D5) in the third measure. The text *G. S. Solo.* is written in the center of the system.

Handwritten musical notation for the first system, featuring a treble clef staff with a complex melodic line and a bass clef staff with a simple accompaniment.

Handwritten musical notation for the second system, continuing the melodic and accompaniment lines.

Handwritten musical notation for the third system, including the instruction *dim:*.

Handwritten musical notation for the fourth system, showing melodic development.

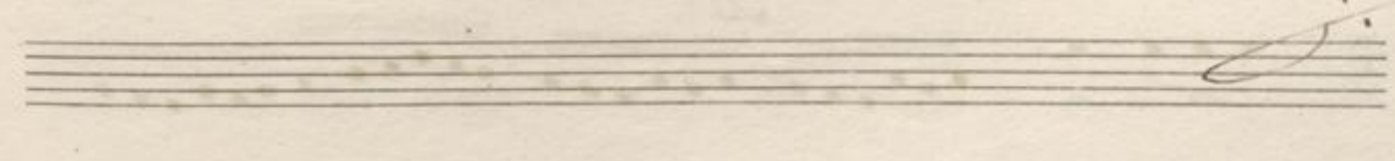
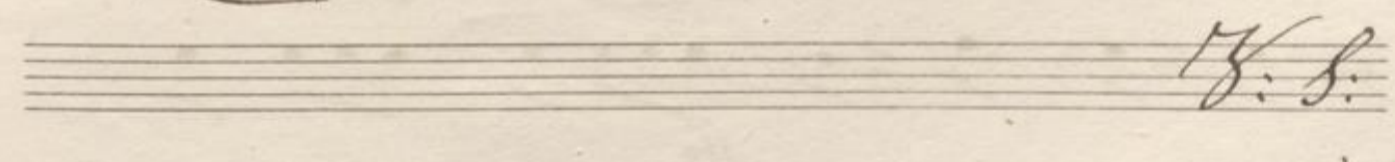
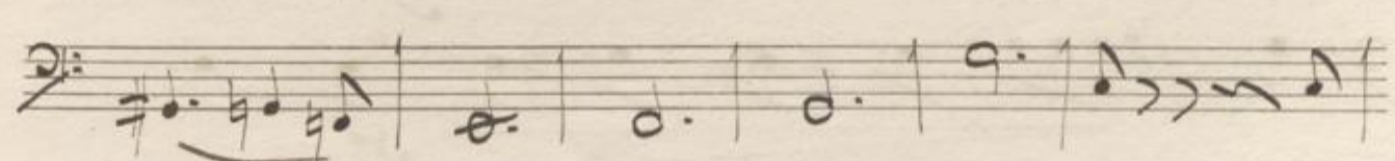
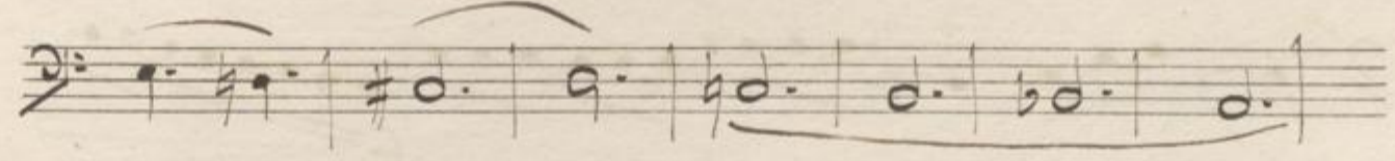
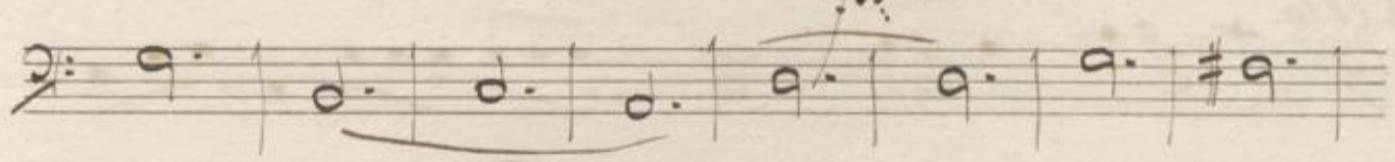
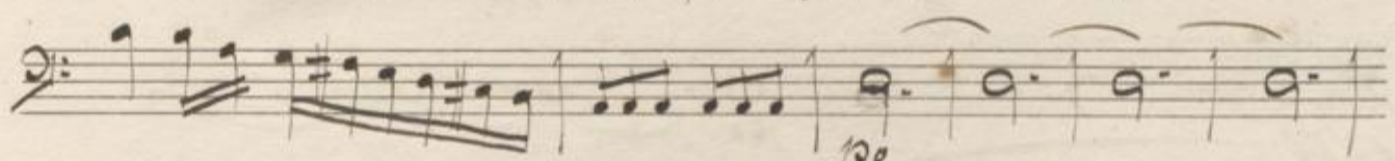
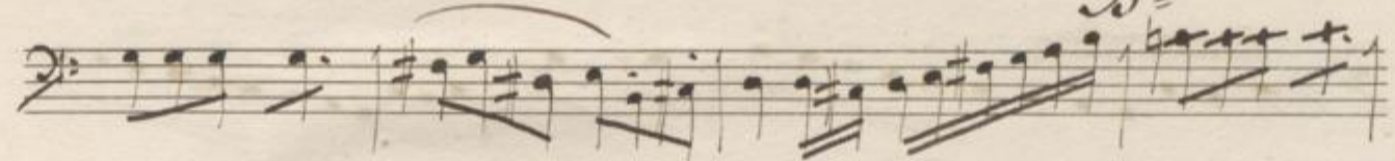
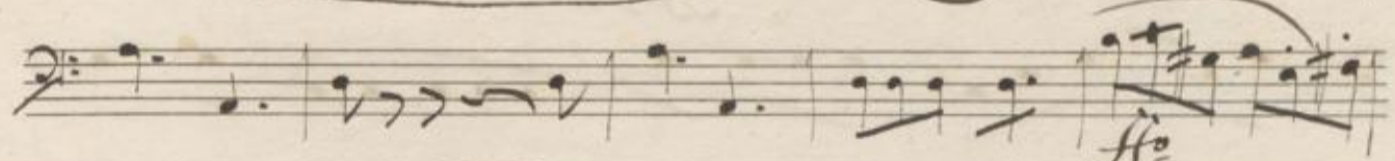
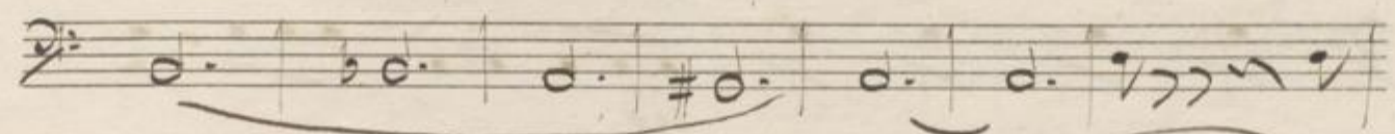
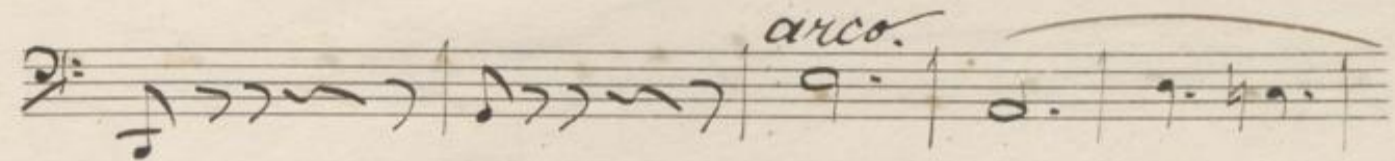
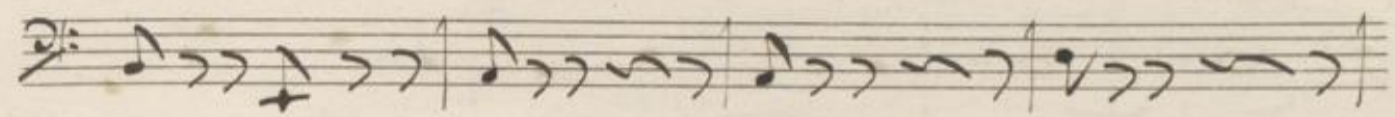
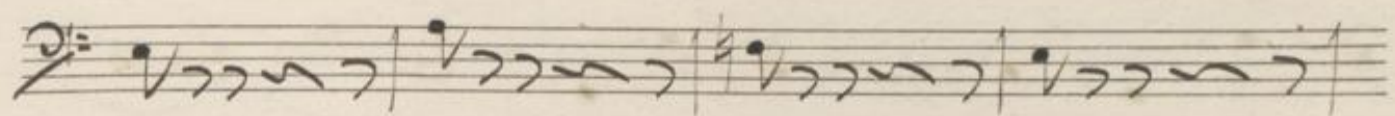
Handwritten musical notation for the fifth system, ending with a 6/8 time signature.

All^o moderato.

Handwritten musical notation for the sixth system, including the instruction *pizz.* and *arco.*.

Handwritten musical score on ten staves. The notation includes various note values, rests, and dynamic markings such as *fz*, *pizz.*, *arco.*, and *poco*. The piece concludes with a double bar line and a repeat sign.

Handwritten musical score on page 202, featuring ten staves of music. The notation includes various clefs (treble and bass), notes, rests, and accidentals. Annotations include '10/10' written above the first staff, 'pizz.' written below the eighth staff, and '10/10' written below the seventh staff. The music appears to be a single melodic line with some accompaniment or figured bass elements. The paper shows signs of age and wear.



A handwritten musical score for Cello and Bass, consisting of 12 staves. The notation is in bass clef with a key signature of one flat (B-flat). The score includes various musical notations such as notes, rests, slurs, and dynamic markings. The word "Cello." is written on the left side of the 7th staff. Dynamic markings include *ff* (fortissimo) and *ff^o* (fortissimo con sordina). There are also some handwritten annotations like "2." and "ff^o." above notes. The paper shows signs of age and wear, with some staining and a tear at the bottom edge.

Handwritten musical score on seven staves. The notation includes various notes, rests, and dynamic markings such as *ff* and *f*. A measure with a *4.* above it indicates a fourth ending. The piece concludes with a double bar line and a wavy line.

Fine.

The image shows a page of musical manuscript paper with 12 staves. The left side of the page is partially obscured by a vertical strip of paper with small horizontal lines. The staves contain faint, illegible handwritten notes and markings. The paper is aged and shows some staining and wear.

