

# **Badische Landesbibliothek Karlsruhe**

**Digitale Sammlung der Badischen Landesbibliothek Karlsruhe**

**{Nr. 24}**

Ouvertures

24. *Violoncello et Basso.*

*Overture.*  
*Andte con moto.*

The first system consists of two staves. The upper staff is for Cello and the lower for Bass. Both are in C major and common time. The music begins with a piano (*pp*) dynamic. The first measure contains a half note chord of C4, E4, G4, and C5. The second measure has a half note chord of C4, E4, and G4. The third and fourth measures each contain a half note chord of C4, E4, and G4. The fifth measure has a half note chord of C4, E4, and G4. The sixth measure has a half note chord of C4, E4, and G4.

The second system continues with two staves. The upper staff has a *Solo.* marking above it. The first measure has a half note chord of C4, E4, and G4. The second measure has a half note chord of C4, E4, and G4. The third measure has a half note chord of C4, E4, and G4. The fourth measure has a half note chord of C4, E4, and G4. The fifth measure has a half note chord of C4, E4, and G4. The sixth measure has a half note chord of C4, E4, and G4.

The third system continues with two staves. The upper staff features a complex melodic line with many slurs and ties, including a sixteenth-note run. The lower staff has a half note chord of C4, E4, and G4 in the first measure, followed by a half note chord of C4, E4, and G4 in the second measure, and a half note chord of C4, E4, and G4 in the third measure.

The fourth system continues with two staves. The upper staff has a complex melodic line with many slurs and ties, including a sixteenth-note run. The lower staff has a half note chord of C4, E4, and G4 in the first measure, followed by a half note chord of C4, E4, and G4 in the second measure, and a half note chord of C4, E4, and G4 in the third measure.

The fifth system continues with two staves. The upper staff has a complex melodic line with many slurs and ties, including a sixteenth-note run. The lower staff has a half note chord of C4, E4, and G4 in the first measure, followed by a half note chord of C4, E4, and G4 in the second measure, and a half note chord of C4, E4, and G4 in the third measure.

The sixth system consists of two staves. The upper staff has a half note chord of C4, E4, and G4. The lower staff has a half note chord of C4, E4, and G4. The system concludes with the instruction *F. S. Solo.*

Handwritten musical notation for the first system, featuring a treble clef staff with a complex melodic line and a bass clef staff with a simple accompaniment.

Handwritten musical notation for the second system, continuing the melodic and accompaniment lines.

Handwritten musical notation for the third system, including the instruction *dim:*.

Handwritten musical notation for the fourth system, showing melodic development.

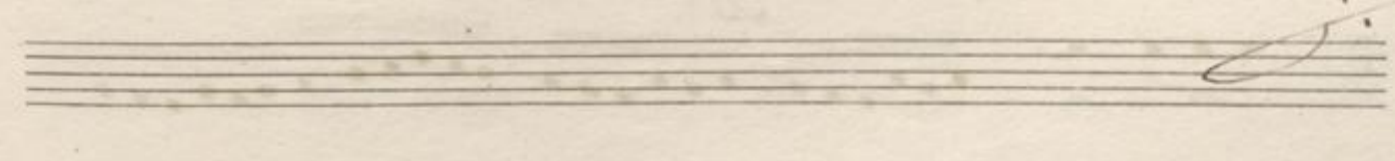
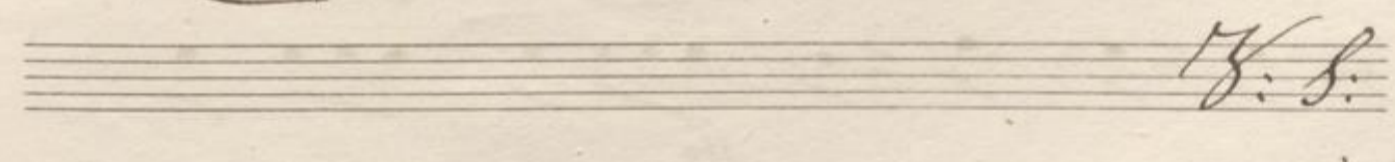
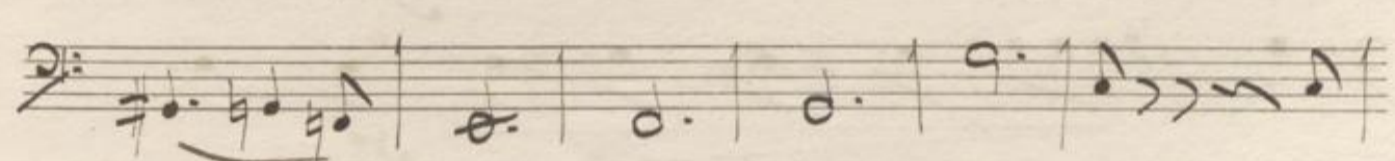
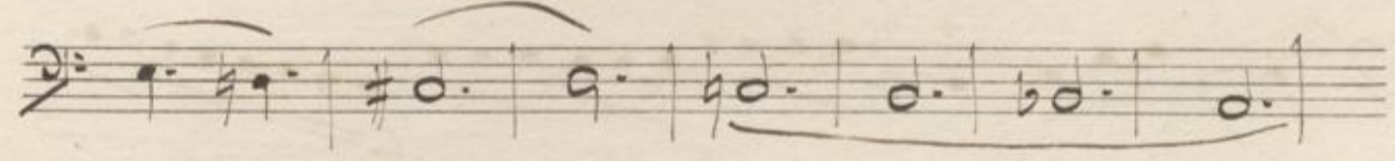
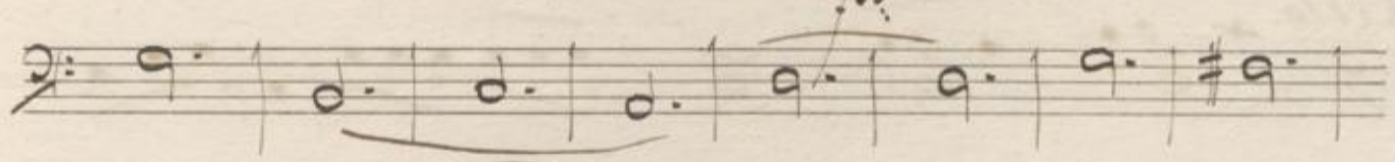
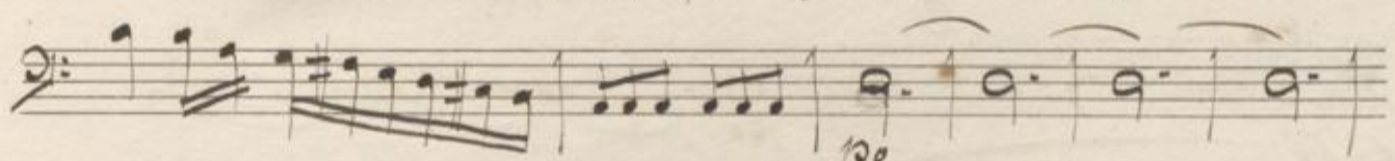
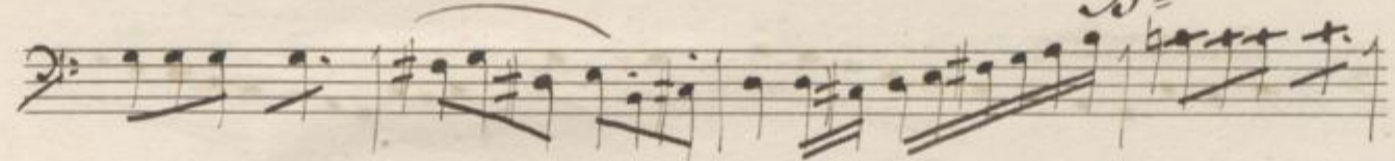
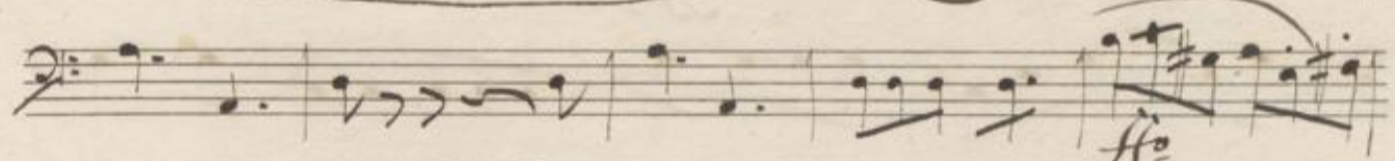
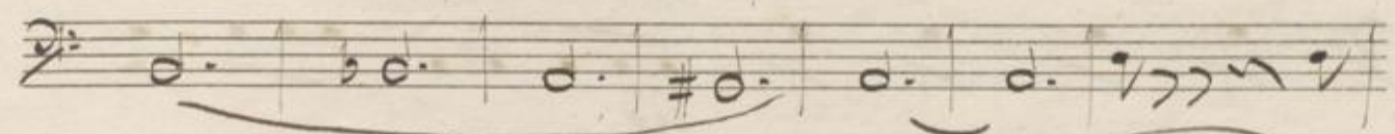
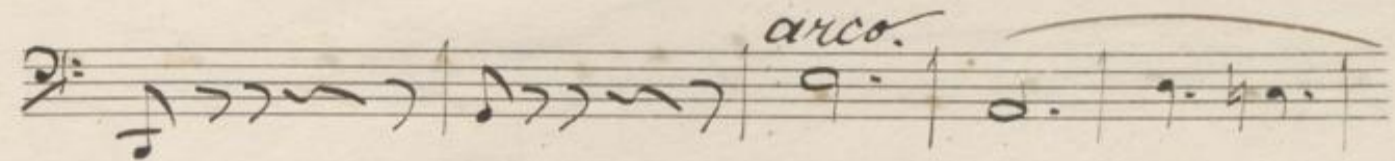
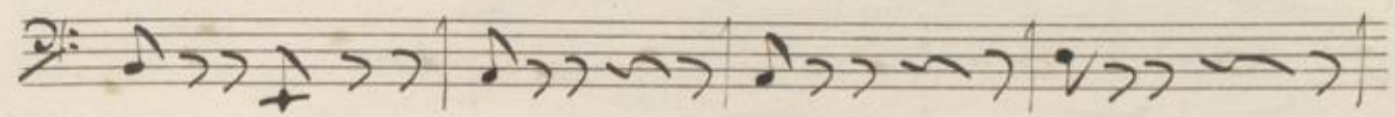
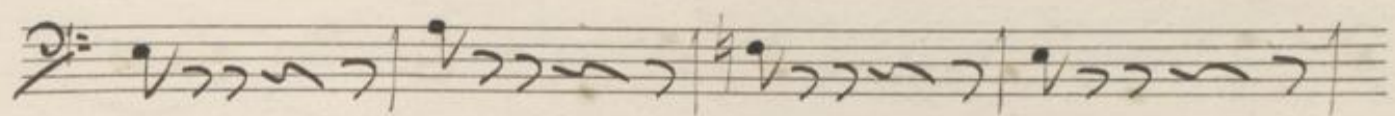
Handwritten musical notation for the fifth system, ending with a 6/8 time signature.

*All<sup>o</sup> moderato.*

Handwritten musical notation for the sixth system, starting with *pizz.* and *arco.* markings.

Handwritten musical score on ten staves. The notation includes various note values, rests, and dynamic markings such as *fz*, *pizz.*, *arco.*, and *ppp*. The piece concludes with a double bar line and a repeat sign.

Handwritten musical score on page 202, featuring ten staves of music. The notation includes various clefs (treble and bass), notes, rests, and accidentals. Annotations include '10/10' written above the first staff, 'pizz.' written below the eighth staff, and '10/10' written below the seventh staff. The music appears to be a single melodic line with some accompaniment or figured bass elements. The paper shows signs of age and wear.



Handwritten musical score for Cello and Bass. The score consists of 12 staves. The first two staves are Bass clef. The third staff is Cello clef, labeled 'Cello.' on the left. The notation includes various note values, rests, and dynamic markings such as *ff* and *p*. There are also some performance instructions like 'pizz.' and 'arco.' visible. The paper shows signs of age and wear.

Handwritten musical score on seven staves. The notation includes various notes, rests, and dynamic markings such as 'f' and 'ff'. A measure with a '4.' above it is present in the fourth staff. The piece concludes with a double bar line and a wavy line.

*Fine.*



