

Badische Landesbibliothek Karlsruhe

Digitale Sammlung der Badischen Landesbibliothek Karlsruhe

Naturgemässe Ausbildung in Gesang und Clavierspiel

Gervinus, Viktoria

Leipzig, 1892

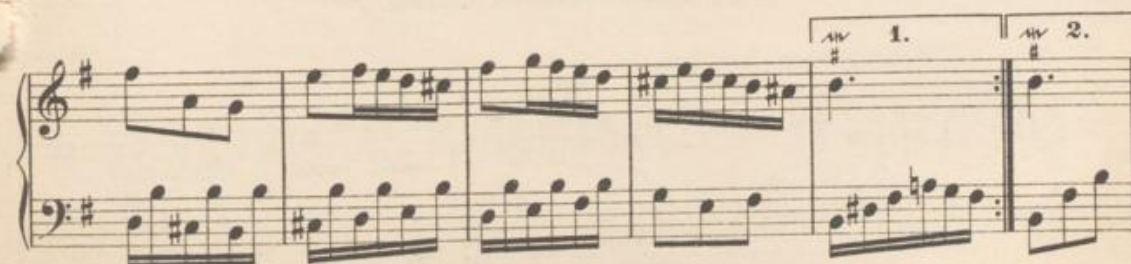
90. Präludie

[urn:nbn:de:bsz:31-140633](https://nbn-resolving.org/urn:nbn:de:bsz:31-140633)



90. Präludie.

Joh. Seb. Bach.



The image shows five systems of piano accompaniment. Each system consists of a treble and bass staff. The key signature is one sharp (F#), and the time signature is 6/8. The music is characterized by a steady eighth-note accompaniment in the left hand and a more melodic line in the right hand, often featuring grace notes and slurs. The piece concludes with a first ending (1.) and a second ending (2.) marked with a repeat sign and a fermata.

91. Deutsches Lied.

Mit heiterem Ausdruck.

W. A. Mozart.

The image shows the beginning of the vocal line and piano accompaniment for '91. Deutsches Lied'. The key signature is one sharp (F#), and the time signature is 6/8. The vocal line is written in a soprano clef, and the piano accompaniment is in a bass clef. The music is in a major key and has a cheerful, light character as indicated by the instruction 'Mit heiterem Ausdruck.'.