

Badische Landesbibliothek Karlsruhe

Digitale Sammlung der Badischen Landesbibliothek Karlsruhe

Proserpine

Lully, Jean-Baptiste

Paris, 1680

Ouverture

[urn:nbn:de:bsz:31-140576](https://nbn-resolving.org/urn:nbn:de:bsz:31-140576)



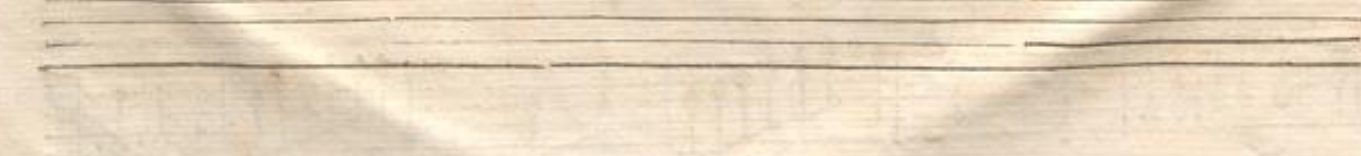
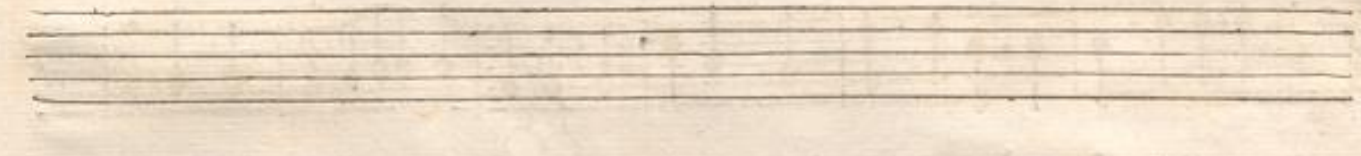
PROSERPINE,

TRAGEDIE.

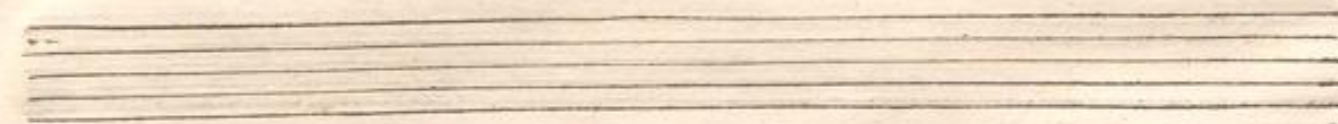
OUVERTURE.

A musical score for the Overture, consisting of ten staves. The first staff is a treble clef with a common time signature. The second and third staves are alto clefs. The fourth and fifth staves are tenor clefs. The sixth and seventh staves are bass clefs. The eighth and ninth staves are alto clefs. The tenth staff is a bass clef. The music is written in a style typical of 18th-century French opera, with various note values, rests, and dynamic markings. The score concludes with a double bar line and a repeat sign.

PROSERPINE,



PROLOGUE.



PROSERPINE,

lentement.

VIOLONS.

VIOLONS.

P R O L O G U E.

First musical staff of the first system, featuring a treble clef and a series of notes and rests.

VIOLONS.

Second musical staff of the first system, featuring a bass clef and notes.

Third musical staff of the first system, featuring a bass clef and notes.

Fourth musical staff of the first system, featuring a bass clef and notes.

Fifth musical staff of the first system, featuring a bass clef and notes.

Empty musical staff.

First musical staff of the second system, featuring a treble clef and notes.

VIOLONS.

Second musical staff of the second system, featuring a bass clef and notes.

Third musical staff of the second system, featuring a bass clef and notes.

Fourth musical staff of the second system, featuring a bass clef and notes.

Fifth musical staff of the second system, featuring a bass clef and notes.

Empty musical staff.

Empty musical staff.

PROSERPINE,

VIOLONS.



PROLOGUE.

LA PAIX.

EROS, dont la Valeur estonne l'Uni-

BASSE-CONTINUE.

vers, Ah! quand briserez-vous nos fers? Heros, dont la Valeur estonne l'Uni-

BASSE-CONTINUE.

vers, Ah! quand briserez-vous nos fers? La Discorde nous tient i- cy sous sa puis-

BASSE-CONTINUE.