

# **Badische Landesbibliothek Karlsruhe**

**Digitale Sammlung der Badischen Landesbibliothek Karlsruhe**

## **Die bau- und feuerpolizeilichen Vorschriften im Grossh. Baden**

**Schlusser, Gustav**

**Karlsruhe, 1904**

Illustration: Bl. 1 & 2

[urn:nbn:de:bsz:31-140400](https://nbn-resolving.org/urn:nbn:de:bsz:31-140400)

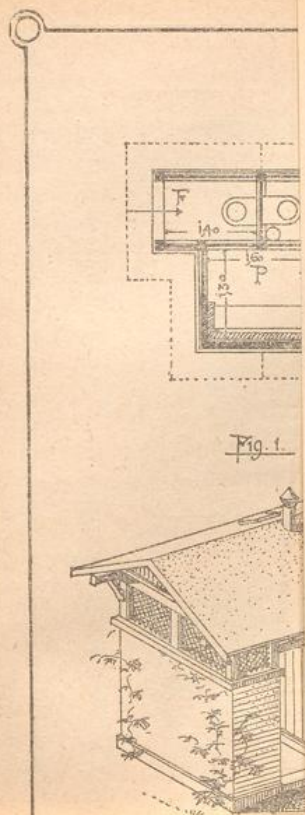


Fig. 1.

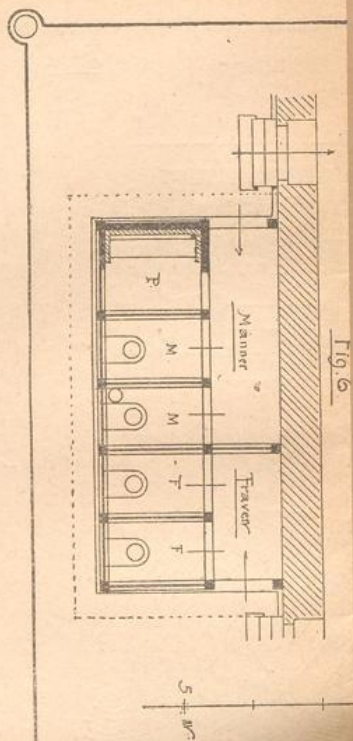
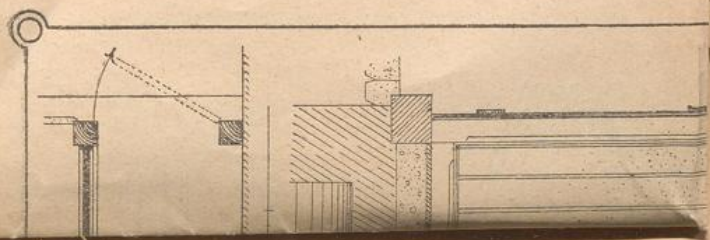


Fig. 6.





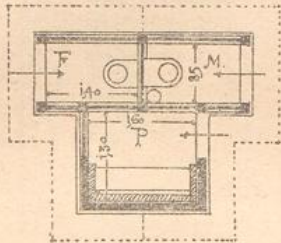


Fig. 1.

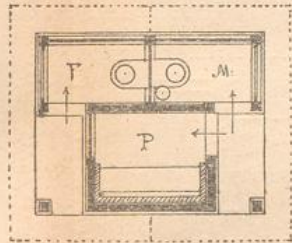
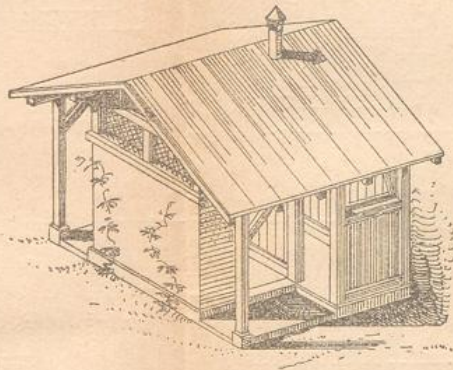
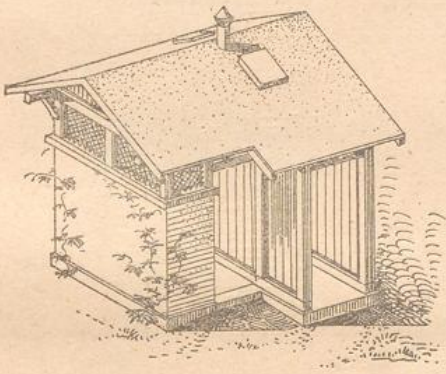
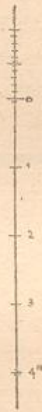


Fig. 2.



Fabrikabortanlagen.

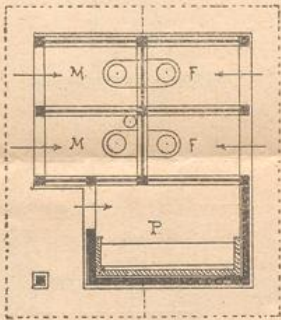
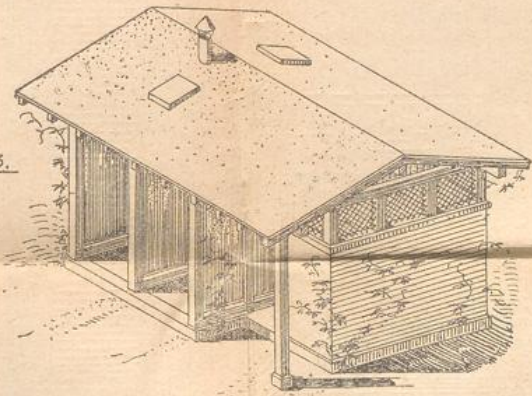


Fig. 3.



H. Krauth



Fabrik-Kabortanlagen

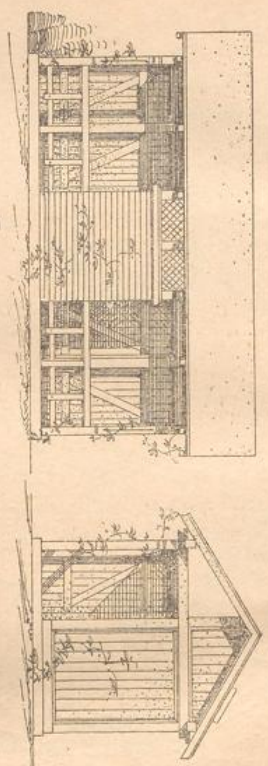


Fig. 4

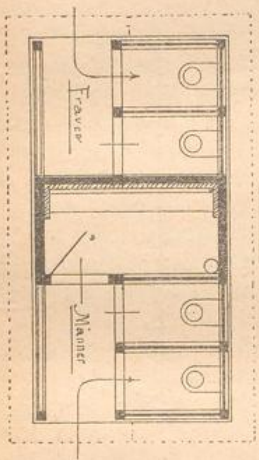


Fig. 5

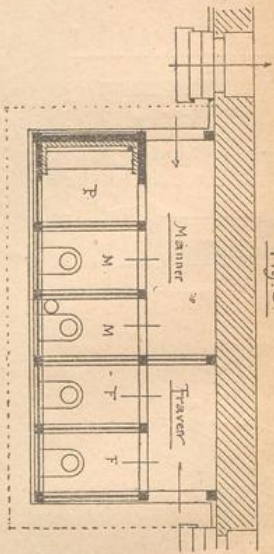


Fig. 6

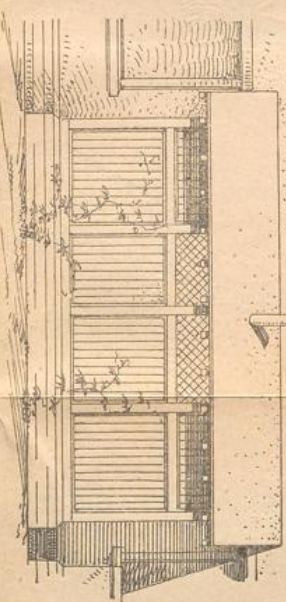
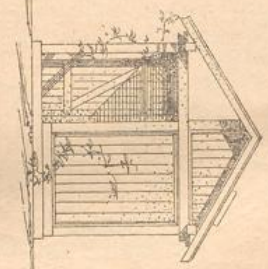


Fig. 7

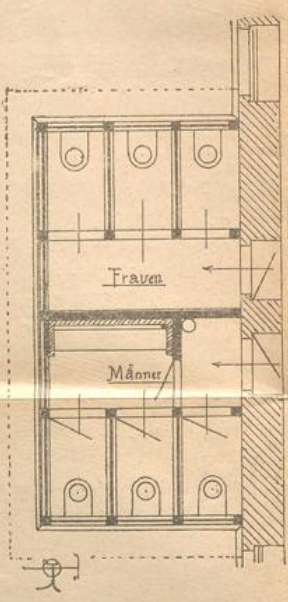


Fig. 9

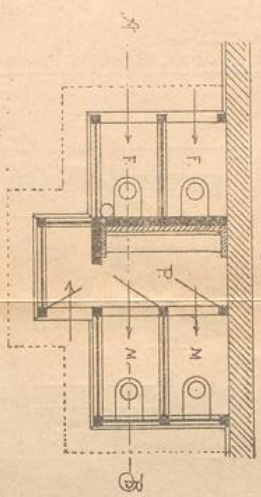


Fig. 10