

Badische Landesbibliothek Karlsruhe

Digitale Sammlung der Badischen Landesbibliothek Karlsruhe

Aesop in Lydien - Don Mus.Ms. 1115|a

Kreutzer, Conradin

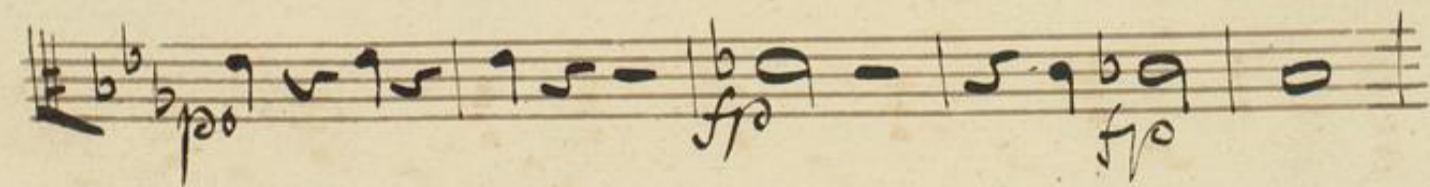
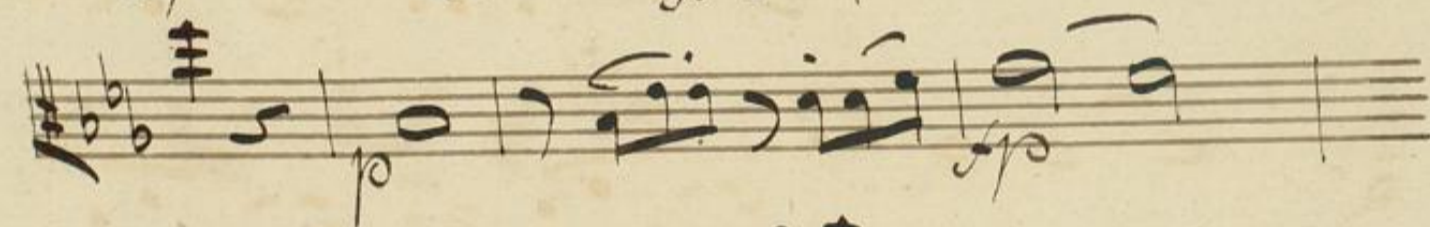

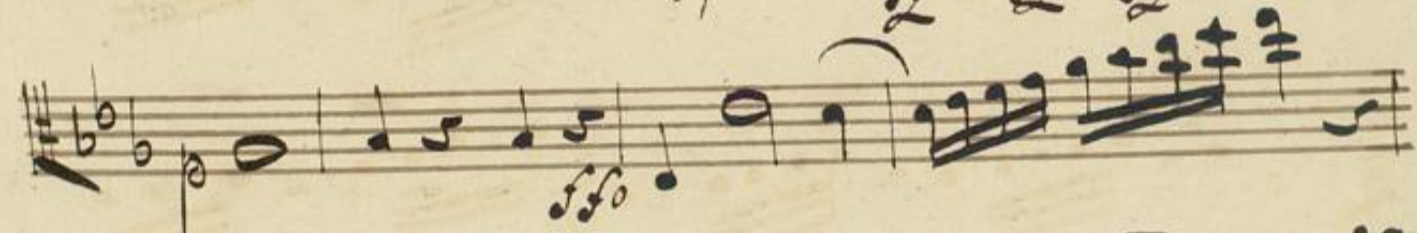
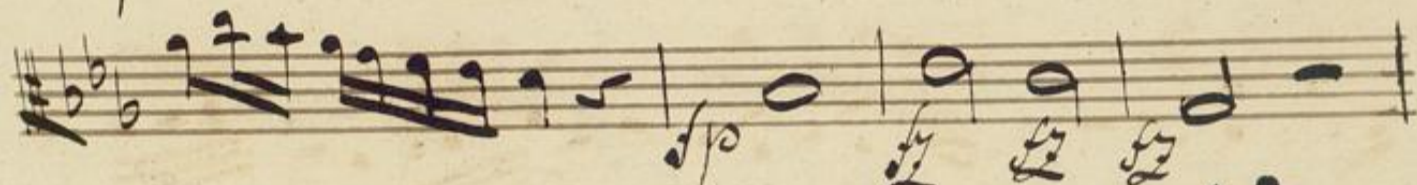

[S.l.], 1820-1821 (1820-1821)

5. Septett. Allegro con brio

[urn:nbn:de:bsz:31-98142](https://nbn-resolving.org/urn:nbn:de:bsz:31-98142)

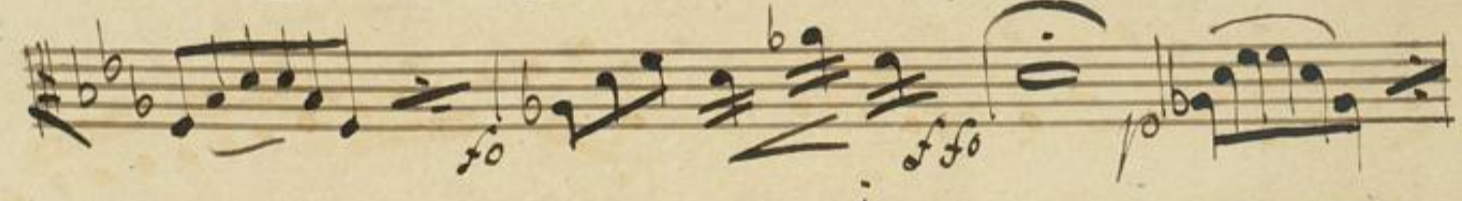
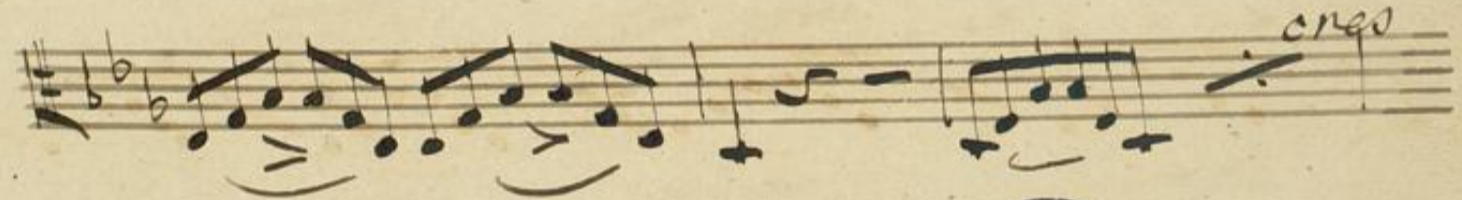
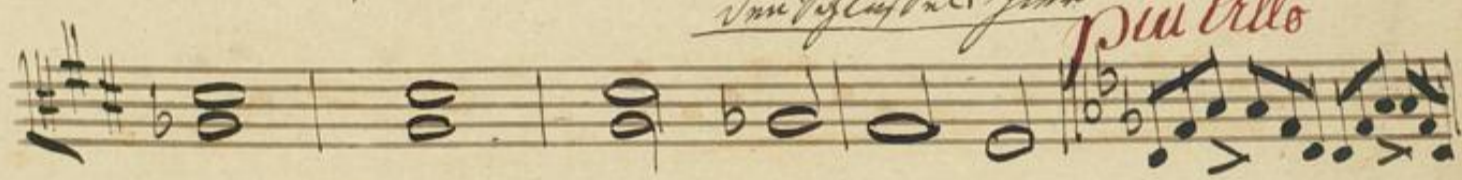
No. 5. *Septetto.*

Alllegro
con brio



Handwritten musical score on ten staves. The notation includes various note values, rests, and dynamic markings such as 'pp' and 'p'. The piece concludes with a double bar line and a repeat sign.

A handwritten musical score consisting of ten staves. The notation includes treble clefs, a key signature of two sharps (F# and C#), and a common time signature (C). The music features a variety of rhythmic patterns, including eighth and sixteenth notes, and rests. Several dynamic markings are present: *pp* (pianissimo) on the third staff, *ffmo* (fortissimo) on the fifth staff, and *pp* on the sixth staff. The score concludes with a double bar line and a fermata on the final note of the tenth staff.



A handwritten musical score consisting of ten staves. The notation includes various rhythmic values, accidentals, and dynamic markings. The first staff begins with the word "cres" and ends with "fo". The second staff has "ffo" written below it. The fourth staff starts with "fp". The sixth staff has "fp" written below it. The score concludes with a double bar line and a fermata-like flourish on the final note of the tenth staff.

Fiu Allegro.

Handwritten musical score for 'Fiu Allegro' consisting of five staves. The notation includes various rhythmic values, accidentals, and dynamic markings. The first staff begins with a treble clef and a key signature of one sharp (F#). The music is characterized by rapid sixteenth-note passages and rests.

No. Finale.

Handwritten musical score for 'Moderate' consisting of four staves. The tempo is marked 'Moderate' in red ink. The notation includes a treble clef, a key signature of one flat (Bb), and a 3/4 time signature. The music features a mix of eighth and sixteenth notes with dynamic markings such as 'p' and 'f'.