

Badische Landesbibliothek Karlsruhe

Digitale Sammlung der Badischen Landesbibliothek Karlsruhe

Aesop in Lydien - Don Mus.Ms. 1115|a

Kreutzer, Conradin

[S.l.], 1820-1821 (1820-1821)

Ouverture

[urn:nbn:de:bsz:31-98142](https://nbn-resolving.org/urn:nbn:de:bsz:31-98142)

ff ff

p mf

mf

p

cres

p

p

p

Handwritten musical notation on a single staff. It begins with a treble clef and a key signature of one flat. The notation includes a series of eighth notes, followed by a quarter rest, and then a measure with a sharp sign above it and a '4.' below it. The piece concludes with a double bar line.

Handwritten musical notation on a single staff. It starts with a treble clef and a key signature of one flat. The notation features a series of eighth notes. A section of the notation is crossed out with red diagonal lines. The word 'mes' is written below the staff.

Handwritten musical notation on a single staff. It begins with a treble clef and a key signature of one flat. The notation consists of a series of quarter notes with stems pointing up. The word 'me' is written below the staff. There are dynamic markings, including a 'p' (piano) and a 'f' (forte).

Handwritten musical notation on a single staff. It starts with a treble clef and a key signature of one flat. The notation includes a series of quarter notes with stems pointing up. There are dynamic markings, including a 'p' (piano) and a 'f' (forte).

Handwritten musical notation on a single staff. It begins with a treble clef and a key signature of one flat. The notation consists of a series of quarter notes with stems pointing up.

Handwritten musical notation on a single staff. It starts with a treble clef and a key signature of one flat. The notation includes a series of quarter notes with stems pointing up.

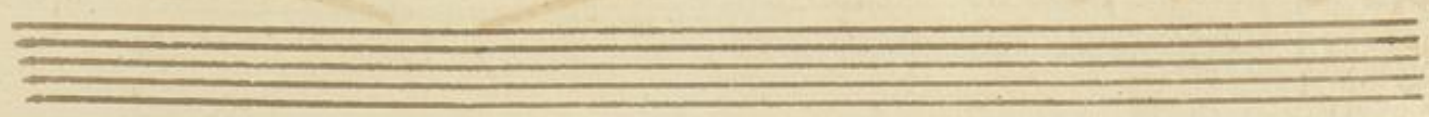
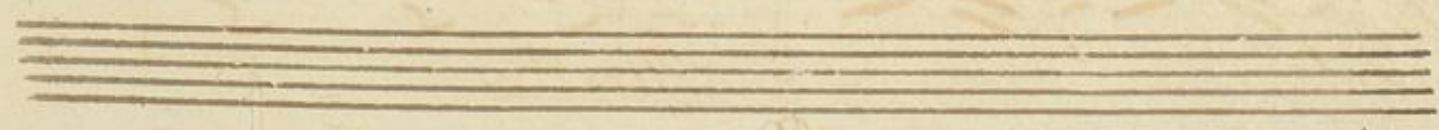
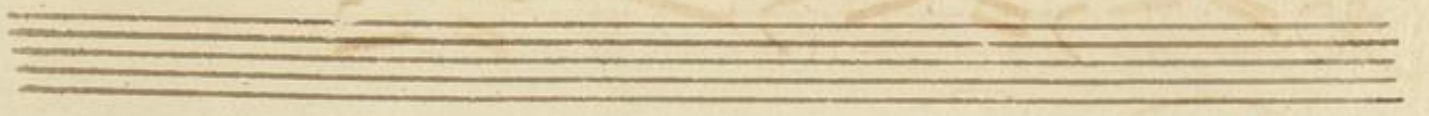
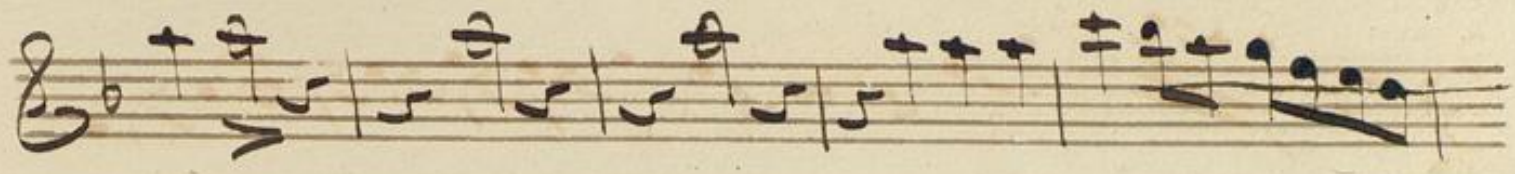
Handwritten musical notation on a single staff. It begins with a treble clef and a key signature of one flat. The notation features a series of quarter notes with stems pointing up. The word 'mes' is written below the staff.

Handwritten musical notation on a single staff. It starts with a treble clef and a key signature of one flat. The notation includes a series of quarter notes with stems pointing up.

Handwritten musical notation on a single staff. It begins with a treble clef and a key signature of one flat. The notation features a series of quarter notes with stems pointing up.

Handwritten musical notation on a single staff. It starts with a treble clef and a key signature of one flat. The notation includes a series of quarter notes with stems pointing up. The piece concludes with a double bar line.

A handwritten musical score consisting of ten staves. The notation includes treble clefs, a key signature of one sharp (F#), and a common time signature (C). The music features a variety of rhythmic patterns, including eighth and sixteenth notes, often grouped with slurs. There are several dynamic markings: 'mes' (mezzo) appears on the fifth and seventh staves, and 'piu stretto.' (faster) is written in red ink on the eighth staff. The manuscript shows signs of age, with some ink bleed-through and staining.



This page contains ten staves of handwritten musical notation. The notation is sparse, consisting of small, dark ink dots placed on the lines of the staves. The dots are arranged in a way that suggests a melodic line, with some dots appearing on the same line and others on adjacent lines. The paper is aged and shows some staining, particularly in the middle and lower sections. The overall appearance is that of a manuscript page, possibly a sketch or a preliminary draft of a musical piece.

This block shows the right edge of the adjacent page, which is also a manuscript page. It features several staves of handwritten musical notation, including what appears to be a large, ornate initial letter in red ink. The notation is more developed than on the current page, with some notes and stems visible. The page is also aged and shows some staining.