

Badische Landesbibliothek Karlsruhe

Digitale Sammlung der Badischen Landesbibliothek Karlsruhe

Symphonies - Don Mus.Ms.S.B.1 Nr.5

Haydn, Joseph

[S.l.], 1790-1810 (1800c)

Klarine I in B

[urn:nbn:de:bsz:31-127839](https://nbn-resolving.org/urn:nbn:de:bsz:31-127839)

SBA

5
141

No. 5.

Clarino I^{mo} in b Fa.



Clarino I^{mo} in b Fa.

Largo. Musical staff with treble clef, common time signature, and notes. Includes fingerings 4, 15, and 22.

Vivace Musical staff with treble clef, common time signature, and notes. Includes a fingering of 2.

Musical staff with treble clef, common time signature, and notes. Includes a fingering of 9.

Musical staff with treble clef, common time signature, and notes. Includes a fingering of 10.

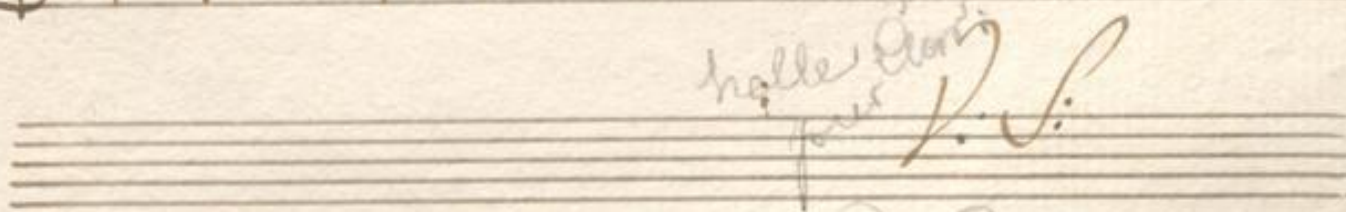
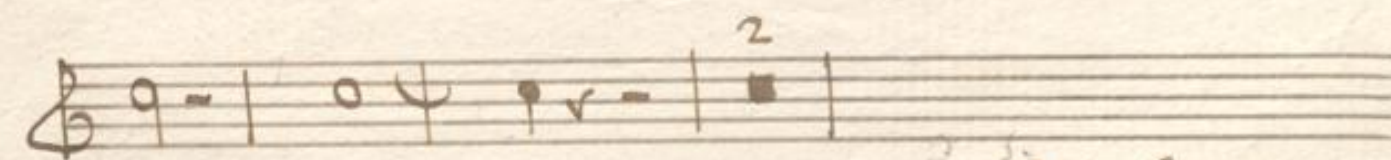
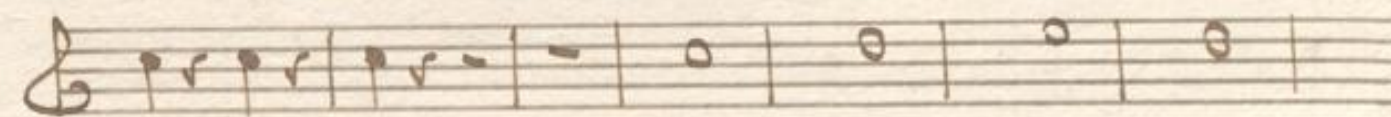
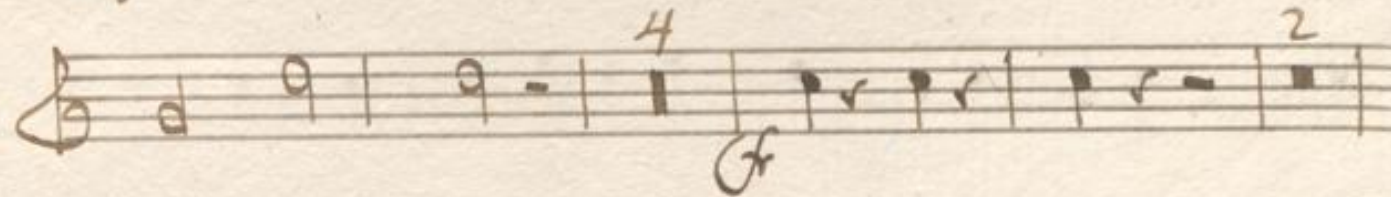
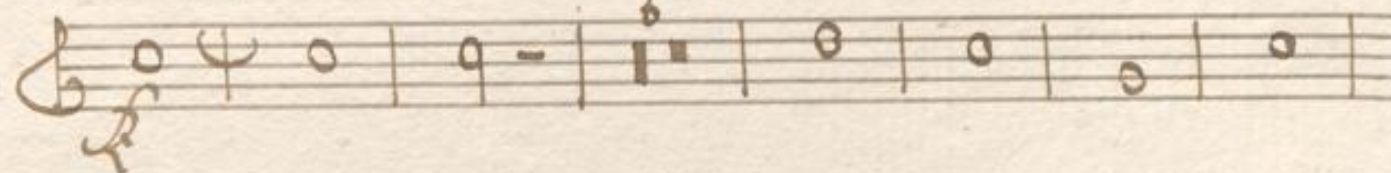
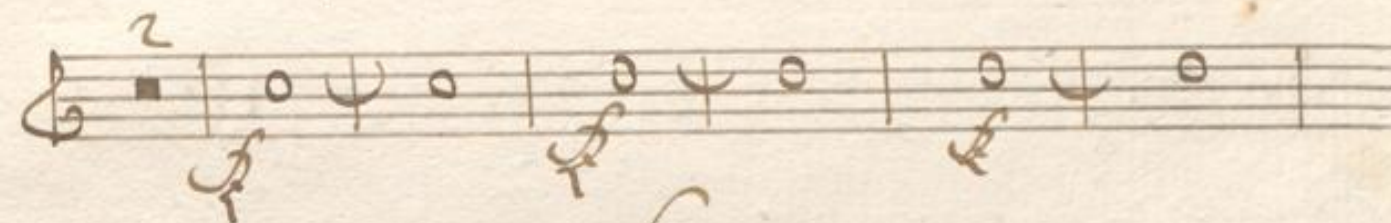
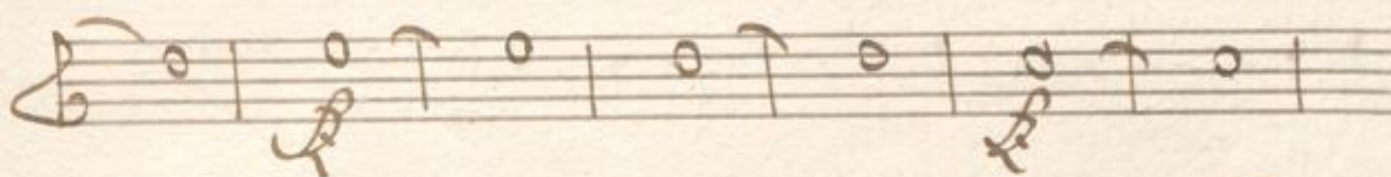
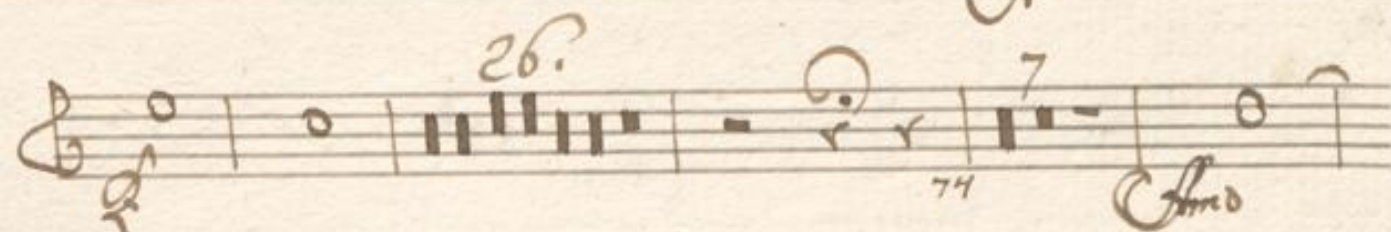
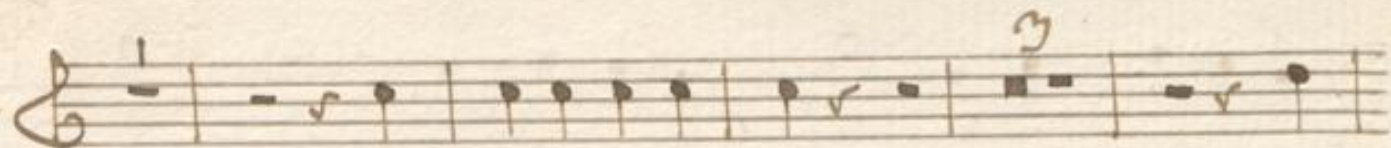
Musical staff with treble clef, common time signature, and notes.

Musical staff with treble clef, common time signature, and notes. Includes fingerings 4 and 5.

Musical staff with treble clef, common time signature, and notes. Includes a fingering of 4.

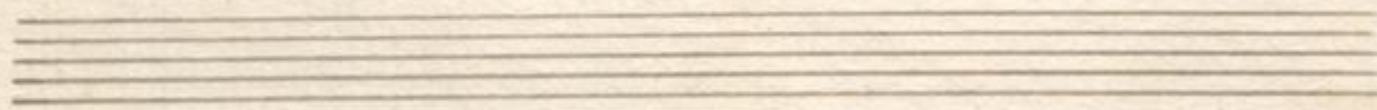
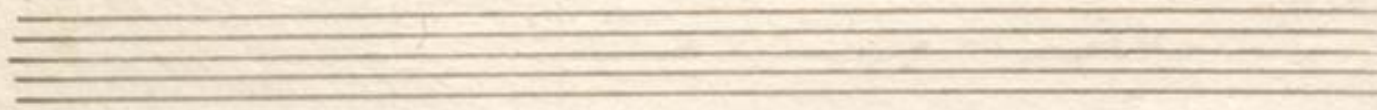
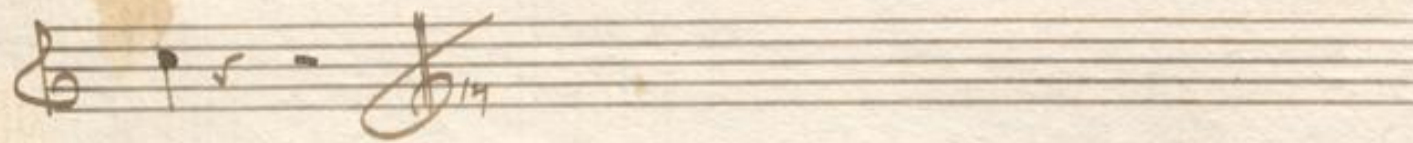
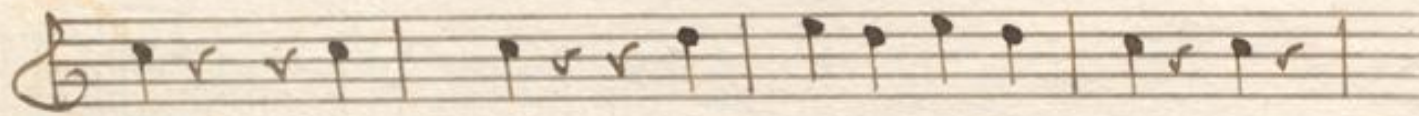
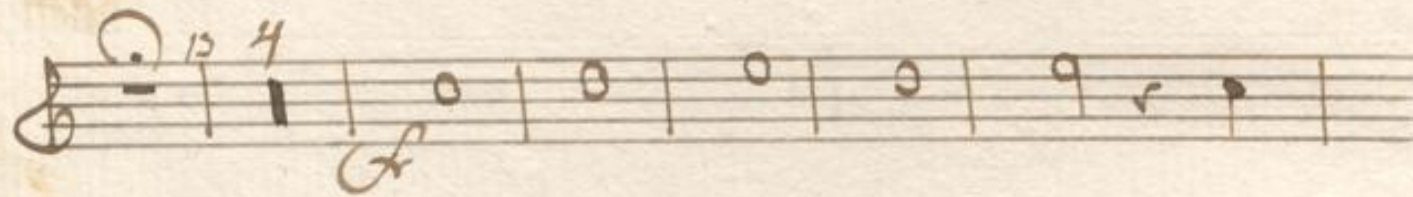
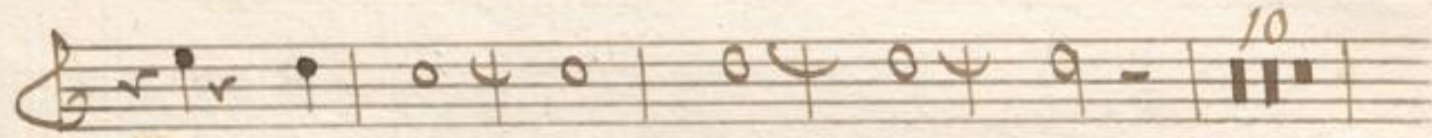
Musical staff with treble clef, common time signature, and notes. Includes a fingering of 3.

Musical staff with treble clef, common time signature, and notes. Includes fingerings 4, 6, and 6.



*halles Quartet
pour V. S.*

Carl Ernst



in C.

Adagio

146

in B.
Menuet
Allegro

Handwritten musical score for a Minuet in B major, Allegro. The score consists of seven staves of music. The first staff shows the title and tempo. The second staff begins with a treble clef and a 3/4 time signature. The music is written in a simple, rhythmic style with many eighth and sixteenth notes. There are several measures with repeat signs (double bars) and some measures with a '4' above them, possibly indicating a measure rest or a specific rhythm. The sixth staff ends with a double bar line and a '4' above it. The seventh staff ends with a double bar line and a treble clef.

Trio Tacet Menuet Da Capo

Tinale

Presto.

Musical notation on a single staff with treble clef and 2/4 time signature. It begins with a key signature change to one flat (B-flat). The notation includes several measures with rests and notes, marked with measure numbers 11, 12, 25, 1, and 2. A double bar line is present after measure 11, and another after measure 25. A fermata is placed over the final measure (measure 2).

147

Second staff of music, starting with a treble clef and a 2. marking above the first measure. It contains a series of quarter notes with stems pointing up.

Third staff of music, starting with a treble clef and a 5. marking above the first measure. It contains a series of quarter notes with stems pointing up.

Fourth staff of music, starting with a treble clef. It contains a series of quarter notes with stems pointing up.

Fifth staff of music, starting with a treble clef. It contains a series of quarter notes with stems pointing up. Measure numbers 10, 3, and 3 are written above the staff. Dynamic markings *f* and *f* are written below the staff.

Sixth staff of music, starting with a treble clef. It contains a series of quarter notes with stems pointing up. Measure number 19 is written above the staff.

Seventh staff of music, starting with a treble clef. It contains a series of quarter notes with stems pointing up.

Eighth staff of music, starting with a treble clef. It contains a series of quarter notes with stems pointing up. Measure number 16 is written above the staff.

Ninth staff of music, consisting of five empty staves with a *P. f.* marking written across them.

Tenth staff of music, consisting of five empty staves.

The page contains ten staves of handwritten musical notation. The notation is in a single system, likely for a keyboard instrument. The staves are numbered with measures: 4, 19, 21, and 25. The music is written in a treble clef with a common time signature (C). The notes are mostly quarter and eighth notes, with some rests. There are several dynamic markings: *p* (piano) and *f* (forte). The notation includes various clefs (treble and bass) and some unusual symbols, possibly indicating fingerings or ornaments. The paper is aged and shows some wear.

Handwritten musical score on five staves. The first staff begins with a treble clef and a dynamic marking of *ff*. The second staff also begins with a treble clef. The third staff begins with a treble clef and a '6' above the first measure. The fourth and fifth staves begin with treble clefs. The fifth staff concludes with a double bar line and a signature.

Four empty musical staves, each consisting of five horizontal lines.

Crépuscule de Solenne

*Crépuscule de Solenne pour le Violoncelle et il qu'on peut concevoir dans
le langage musical parfaitement harmonique.*

The page contains ten horizontal musical staves, each consisting of five lines. The staves are arranged vertically and are currently blank, with no notes or clefs written on them.